

Council, 2 July 2014

Registrant numbers forecast 2014-2019

Executive summary and recommendations

Introduction

The Registration numbers Forecast looks to provide information around changes to numbers of registrants over time. Information around assumptions has been included for each section where appropriate after discussion with members of EMT, CDT and the Chief Executive. Note this has been updated in June 2014. Projected registrant numbers further forward in time are necessarily based on less tightly constrained data.

The same information is also presented in the FAST format, a methodology suggested by Mazars, to allow rapid determination of errors if they occur. Note, this does not prevent errors occurring. The same parameters have been used in both models.

This report does not calculate income but is used as a basis for this process within the Finance department. It also supports the Five Year plan.

Decision

The Council is requested to note the document. No decision is required.

Resource implications

Informs annual departmental work plans

Financial implications

Informs annual departmental work plans

Appendices

Registrant forecast 2014-2019 – previous model

Registrant forecast 2014-2019 – FAST model

Date of paper

17 June 2014

Registration Numbers Forecast

Roy Dunn, Head of Business Process Improvement
Internal working document

24 June 2014

Removals at 5% & 2.5% across cycle
Rejoined at 2.5% & 1.25% across cycle



Contents

Key assumptions	5
Number of registrants	6
New professions - transfer of voluntary register	8
New registrations - UK route	10
New applications - International route	12
New registrations - International route	14
New applications - Grandparenting route	16
New registrations - Grandparenting route	18
Removed	20
Readmissions	22
Removed registrants less readmissions	24
Applications received for the register of visiting European Health Professionals	26
Appendices	
Appendix 1 List of acronyms	29
Appendix 2 UK route application & registration monthly phasing	30
Appendix 3 International route application phasing (scrutiny fees)	31
Appendix 4 International route registration phasing	32
Appendix 5 Grandparenting model phasing based on two year windows	33
Appendix 6 Profession renewal periods	34
Appendix 7 2 year registration cycle by profession	35

DRAFT only

Key assumptions

- Following a government announcement in early 2012, it is anticipated that PHS will be on the HCPC register by April 2015
- HMTTCM voluntary register will be added to the model with transfer on to the HCPC register in October 2016
- Care workers are not included in this forecast as no decision has been made by government as to whether they will be regulated in England or on the type of regulation to be employed

Notation; '0' indicates no records where route is viable. '-' indicates route is not viable

Pale blue highlight indicates manual data input, for new or changing professions

DRAFT only

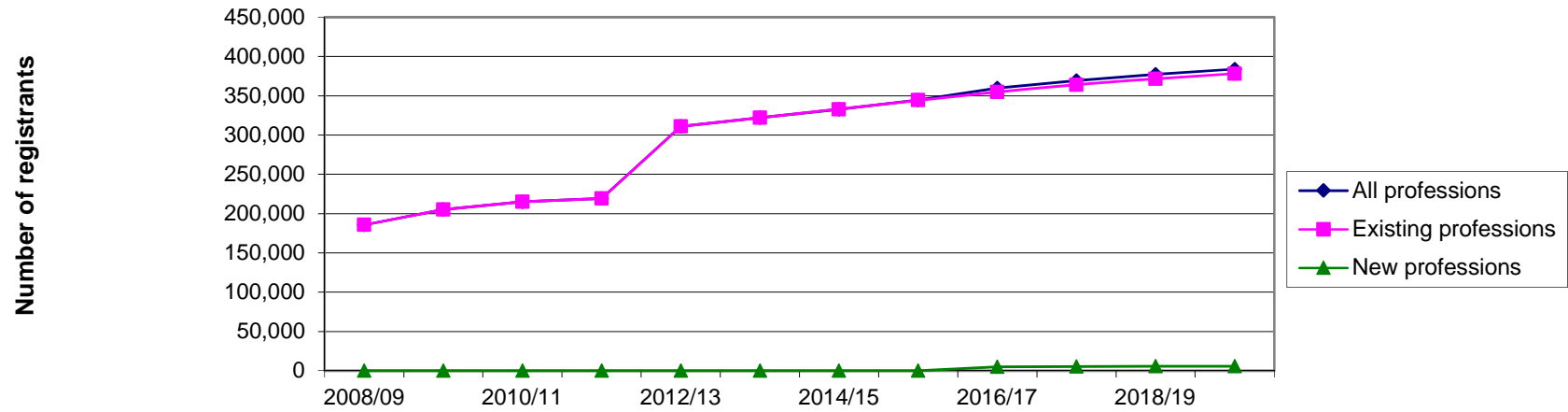
Number of registrants

	Actual	Actual	Actual	Actual	Actual	Actual	Year 0	Year 1	Year 2	Year 3	Year 4	Year 5
	2008/09	2009/10	2010/11	2011/12	2012/13	2013/14	RF1 2014/15	Forecast 2015/16	Forecast 2016/17	Forecast 2017/18	Forecast 2018/19	Forecast 2019/20
AS	2,576	2,785	2,899	3,121	3,185	3,451	3,648	3,873	4,035	4,222	4,354	4,516
BS	22,381	21,894	22,627	21,886	22,402	21,901	22,503	22,772	23,278	23,447	23,868	23,951
CH	12,581	12,897	12,734	13,005	12,754	13,031	13,081	13,278	13,291	13,455	13,435	13,570
CS	4,405	4,444	4,621	4,665	4,847	4,930	5,217	5,420	5,670	5,831	6,048	6,174
DT	6,700	7,160	7,322	7,782	7,890	8,372	8,695	9,091	9,343	9,681	9,872	10,161
HAD	-	-	1,587	1,722	1,806	2,010	2,165	2,334	2,463	2,612	2,719	2,851
OT	30,122	30,351	32,126	31,946	33,717	34,145	35,692	36,680	38,013	38,771	39,915	40,470
ODP	9,587	10,085	10,313	10,929	11,246	11,881	12,263	12,761	13,067	13,504	13,743	14,125
OR	1,278	1,260	1,303	1,286	1,329	1,316	1,368	1,399	1,444	1,468	1,508	1,525
PA	15,019	15,766	16,782	17,913	19,373	20,100	21,034	21,645	22,465	22,948	23,664	24,033
PH	42,676	44,651	45,002	46,516	46,842	48,908	50,200	51,948	52,897	54,362	55,016	56,236
PO	877	869	901	893	936	948	1,003	1,041	1,089	1,119	1,161	1,184
PYL	-	15,583	17,165	17,845	19,341	19,908	20,771	21,313	22,060	22,478	23,123	23,429
RA	25,318	25,195	26,615	26,480	27,820	28,058	29,278	30,039	31,084	31,659	32,551	32,964
SL	12,169	12,371	13,086	13,173	14,033	14,129	14,751	15,140	15,672	15,965	16,417	16,627
SW	-	-	-	-	83,421	88,949	91,244	95,795	99,073	102,665	104,238	106,461
Total	185,689	205,311	215,083	219,162	310,942	322,037	332,911	344,529	354,943	364,188	371,631	378,278
HMTCM	-	-	-	-	-	-	-	-	4,420	4,733	5,064	5,151
PHS	-	-	-	-	-	-	-	540	519	511	523	515
Total New								4,939	5,244	5,587	5,667	
Grand total	185,689	205,311	215,083	219,162	310,942	322,037	332,911	344,529	359,881	369,432	377,218	383,945

UPDATED BY COPY & PASTE VALUES

NOT UPDATED WILL BE CALCULATED BY OTHER TABS INPUT

DRAFT only

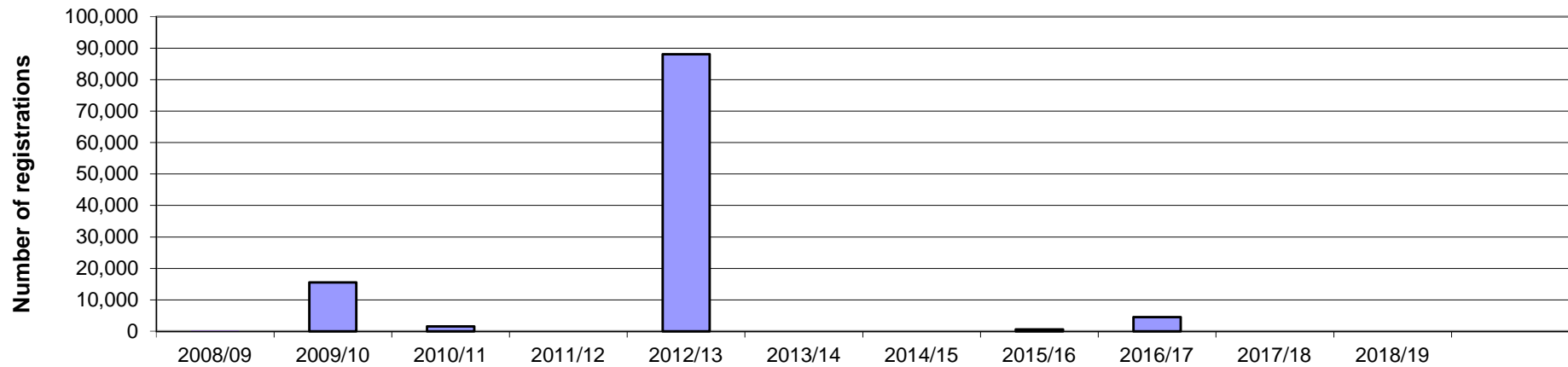


Key assumptions:

- All figures on 31st March, Financial Year End for HCPC.
- These figures are calculated from;
 - Number of registrants
 - New registrations - UK route
 - New professions - transfer of voluntary register
 - New registrations - International route
 - New registrations - Grandparenting route
 - Removed registrations
 - Readmitted registration

New professions - transfer of voluntary or existing register

	Actual 2008/09	Actual 2009/10	Actual 2010/11	Actual 2011/12	Actual 2012/13	Actual 2013/14	Year 0 RF1 2014/15	Year 1 Forecast 2015/16	Year 2 Forecast 2016/17	Year 3 Forecast 2017/18	Year 4 Forecast 2018/19	Year 5 Forecast 2019/20
HAD	-	-	1,573	-	-	-	-	-	-	-	-	-
PYL	-	15,552	-	-	-	-	-	-	-	-	-	-
SW	-	-	-	-	88,059	-	-	-	-	-	-	-
PHS	-	-	-	-	-	-	-	570	-	-	-	-
HMTCM	-	-	-	-	-	-	-	-	4,500	-	-	-
Total	0	15,552	1,573	0	88,059	0	0	570	4,500	0	0	0



*84,000 Social workers were Reforecasted to be transferred. However, 88,059 records were received from the GSCC. Of the 88,059 that were transferred, 8425 chose not to renew

DRAFT only

Key assumptions

- Public Health Specialists to be regulated by HCPC following government announcement February 2012 to move profession from the UK Public Health Register. Approx 570?
UK Public Health Register transfers 1st April 2015, with renewal 3 months later.
- 4,500 HMTCM practitioners transferring from voluntary registers (estimate) around 1st October 2016, with renewal 3 months later
Actual new prof totals are transferred quantities

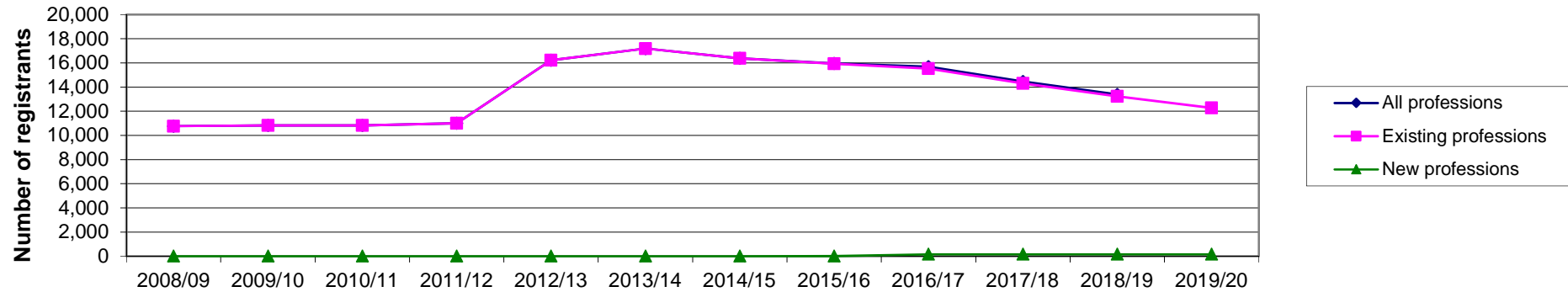
DRAFT only

New registrations - UK route

	Actual 2008/09	Actual 2009/10	Actual 2010/11	Actual 2011/12	Actual 2012/13	Actual 2013/14	Year 0 RF1 2014/15	Year 1 Forecast 2015/16	Year 2 Forecast 2016/17	Year 3 Forecast 2017/18	Year 4 Forecast 2018/19	Year 5 Forecast 2019/20	
Existing professions	AS	215	208	248	251	271	280	269	258	248	238	228	219
	BS	770	765	800	752	746	752	722	693	665	639	613	589
	CH	430	388	406	369	376	376	361	347	333	319	307	294
	CS	275	235	228	271	224	328	315	302	290	279	267	257
	DT	434	428	442	420	444	453	435	417	401	385	369	355
	HAD	-	-	73	151	227	205	197	189	181	174	167	160
	OT	1,867	1,724	1,660	1,573	1,742	1,797	1,725	1,656	1,590	1,526	1,465	1,407
	ODP	604	498	611	674	715	706	678	651	625	600	576	553
	OR	53	45	49	41	61	70	67	65	62	59	57	55
	PA	1,505	1,127	1,148	1,529	1,668	1,210	1,162	1,115	1,071	1,028	987	947
	PH	2,446	2,170	1,947	1,803	1,937	1,960	1,882	1,806	1,734	1,665	1,598	1,534
	PO	48	35	36	32	51	63	60	58	56	54	51	49
	PYL	-	1,225	1,274	1,224	1,202	1,059	1,017	976	937	899	863	829
	RA	1,316	1,221	1,193	1,201	1,343	1,385	1,330	1,276	1,225	1,176	1,129	1,084
	SL	807	757	723	725	831	689	661	635	610	585	562	539
	SW	-	-	-	-	4,395	5,857	5,500	5,500	5,500	4,675	4,000	3,400
Total	10,770	10,826	10,838	11,016	16,233	17,190	16,380	15,944	15,527	14,301	13,241	12,271	
HMTCM	-	-	-	-	-	-	-	-	150	150	150	150	
PHS	-	-	-	-	-	-	-	10	10	10	10	10	
Total New	0	0	0	0	0	0	0	10	160	160	160	160	
Grand total	10,770	10,826	10,838	11,016	16,233	17,190	16,380	15,954	15,687	14,461	13,401	12,431	

UPDATED %age UK apps reduction 14%>4%
SW10%reduction kicks in

DRAFT only



Key assumptions

- UK route registrations based on historic data projected forward. Additional 10% projected drop (totalling 14%) in Year 0 = 2013/14 based on information received from some institutions. This is a marginally pessimistic assumption.
- 2010/11 to 2014/15: generic 4% fall p/a (excluding SW profession). May continue medium term.
- Figures for all new professions are estimated based on DH data, unless otherwise specified.
- Social Work students graduating will fall by 10% starting 2016/17 following decrease in numbers of programmes
- PHS, initial research suggests 10 new UK route registrations per year
- HMTTCM, initial research suggests we will receive 75 in first year of register (due to reg opening 1st Oct), 150 pa thereafter.

DRAFT only

New applications - International route

	Actual 2008/09	Actual 2009/10	Actual 2010/11	Actual 2011/12	Actual 2012/13	Actual 2013/14	Year 0 RF1 2014/15	Year 1 Forecast 2015/16	Year 2 Forecast 2016/17	Year 3 Forecast 2017/18	Year 4 Forecast 2018/19	Year 5 Forecast 2019/20
AS	11	7	15	16	11	9	14	13	11	10	9	8
BS	218	205	220	143	172	191	157	141	127	114	103	93
CH	22	23	19	21	19	20	19	17	15	14	12	11
CS	25	28	38	33	42	47	42	38	34	31	28	25
DT	107	96	112	110	105	122	105	95	85	77	69	62
HAD	-	-	7	6	7	22	7	6	6	5	5	4
OT	330	265	324	258	256	260	256	230	207	187	168	151
ODP	5	5	4	4	11	7	11	10	9	8	7	6
OR	3	1	2	1	3	2	3	3	2	2	2	2
PA	26	28	27	25	34	40	34	31	28	25	22	20
PH	622	528	642	626	671	715	671	604	544	489	440	396
PO	9	0	7	8	7	3	7	6	6	5	5	4
PYL	-	112	191	124	152	150	152	137	123	111	100	90
RA	312	215	320	299	235	301	235	212	190	171	154	139
SL	120	133	137	153	121	153	121	109	98	88	79	71
SW	-	-	-	-	218	306	210	189	170	153	138	124
Total	1,810	1,646	2,065	1,827	2,064	2,348	2,044	1,840	1,656	1,490	1,341	1,207
HMTCM	-	-	-	-	-	-	-	-	150	150	150	150
PHS	-	-	-	-	-	-	-	3	3	3	3	3
Total New	-	-	-	-	-	-	-	3	153	153	153	153
Grand total	1,810	1,646	2,065	1,827	2,064	2,348	2,044	1,840	1,809	1,643	1,494	1,360

UPDATED

DRAFT only

Key assumptions

- Only applications where the scrutiny fee is retained are counted
 - Applicants applying in one financial year may be registered in subsequent years
 - Some applications will not result in registration
 - Some initial assessments will result in POA or Aptitude Tests which may occur much later
 - EU Temporary and Occasional applicants are not included here (see page 24)
- SW project 200 applications from Year 1, then decline
HMTCM start part way through year 2 so only 50% of INTL predicted can apply or register.

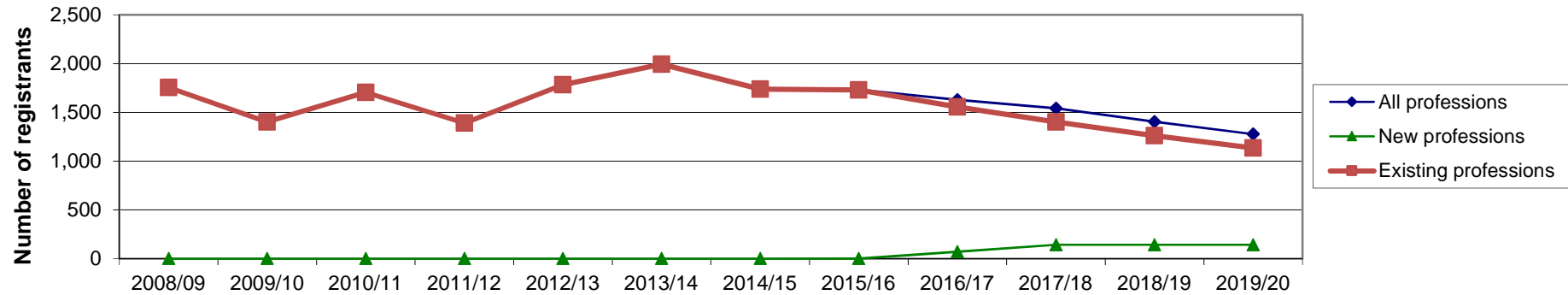
DRAFT only

New registrations - International route

	Actual 2008/09	Actual 2009/10	Actual 2010/11	Actual 2011/12	Actual 2012/13	Actual 2013/14	Year 0 RF1 2014/15	Year 1 Forecast 2015/16	Year 2 Forecast 2016/17	Year 3 Forecast 2017/18	Year 4 Forecast 2018/19	Year 5 Forecast 2019/20	
Existing professions	AS	6	4	15	10	14	8	14	13	11	10	9	8
	BS	236	170	202	122	157	157	154	139	125	112	101	91
	CH	27	14	18	14	16	20	15	14	12	11	10	9
	CS	28	22	25	25	34	30	34	31	28	25	22	20
	DT	97	84	88	78	101	85	97	87	79	71	64	57
	HAD	-	-	5	5	8	13	8	7	6	6	5	5
	OT	283	258	289	217	252	259	249	224	202	182	163	147
	ODP	2	4	3	3	2	4	1	1	1	1	1	1
	OR	3	1	1	2	1	0	1	1	1	1	1	1
	PA	22	24	25	20	24	27	24	22	19	17	16	14
	PH	608	472	501	464	641	613	633	570	513	461	415	374
	PO	3	1	6	7	6	4	6	5	5	4	4	4
	PYL	-	37	127	91	96	129	95	86	77	69	62	56
	RA	336	200	270	216	241	269	241	217	195	176	158	142
	SL	105	110	130	116	139	144	137	123	111	100	90	81
	SW	-	-	-	-	51	232	30	192	173	156	140	126
Total	1,756	1,401	1,705	1,390	1,783	1,994	1,739	1,730	1,557	1,401	1,261	1,135	
HMTCM	-	-	-	-	-	-	-	-	70	140	140	140	
PHS	-	-	-	-	-	-	-	2	2	2	2	2	
Total New	0	0	0	0	0	0	0	2	72	142	142	142	
Grand total	1,756	1,401	1,705	1,390	1,783	1,994	1,739	1,732	1,629	1,543	1,403	1,277	

UPDATED

DRAFT only



Key assumptions

- Reforecast year reset to last financial years "Actuals" each year
- 10% drop per year in new International registrants projected forward from Reforecast year.
- Link between application date and registration date variable between 1 month and 8 months assuming POA/TOC is not required
- Public Health Specialists international route quantities poorly constrained, perhaps 2 per year initially
- Model for Herbal Medicine & Traditional Chinese medicine practitioners, poorly constrained, perhaps 140 per year initially
- HMTCM start part way through year 2 so only 50% of INTL predicted can apply or register.
- SW INTL registrations around 192 in second full year of HCPC registration (Yea

DRAFT only

New applications - Grandparenting route

	Actual 2008/09	Actual 2009/10	Actual 2010/11	Actual 2011/12	Actual 2012/13	Reforecast 2013/14	Year 0 RF1 2014/15	Year 1 Forecast 2015/16	Year 2 Forecast 2016/17	Year 3 Forecast 2017/18	Year 4 Forecast 2018/19	Year 5 Forecast 2019/20
Existing professions	AS	-	-	-	-	-	-	-	-	-	-	-
	BS	-	-	-	-	-	-	-	-	-	-	-
	CH	-	-	-	-	-	-	-	-	-	-	-
	CS	-	-	-	-	-	-	-	-	-	-	-
	DT	-	-	-	-	-	-	-	-	-	-	-
	HAD	-	-	-	-	-	-	-	-	-	-	-
	OT	-	-	-	-	-	-	-	-	-	-	-
	ODP	-	-	-	-	-	-	-	-	-	-	-
	OR	-	-	-	-	-	-	-	-	-	-	-
	PA	-	-	-	-	-	-	-	-	-	-	-
	PH	-	-	-	-	-	-	-	-	-	-	-
	PO	-	-	-	-	-	-	-	-	-	-	-
	PYL	-	69	96	337	265	-	-	-	-	-	-
	RA	-	-	-	-	-	-	-	-	-	-	-
	SL	-	-	-	-	-	-	-	-	-	-	-
	SW	-	-	-	-	-	-	-	-	-	-	-
Total	0	69	96	337	265	0	-	0	0	0	0	0
HMTCM	-	-	-	-	-	-	-	-	120	220	100	-
PHS	-	-	-	-	-	-	-	10	10	-	-	-
Total New	0	0	0	0	0	0	0	10	130	220	100	0
Grand total	0	69	96	337	265	0	0	10	130	220	100	0

UPDATED

Key assumptions

- Grandparenting route is typically run for a two year period starting with the opening of a new professional register
- Where multiple modalities or divisions occur, a registration resulting from an existing register may have additional modalities or divisions applied via the Grandparenting route
However, the number of registrations does not increase when the applicant successfully applies, but has an additional modality or division listed.
- Predictions of applicants are difficult to delimit
- Phasing of applicants via the grandparenting route are based on previous trends but professional influences may cause large variances from the forecast
- HMTCM grandparenting application route starts on 1 October 2016 and open for 24 months.
- PHS grandparenting application route startds on 1 April 2015 and is open for 24 months.

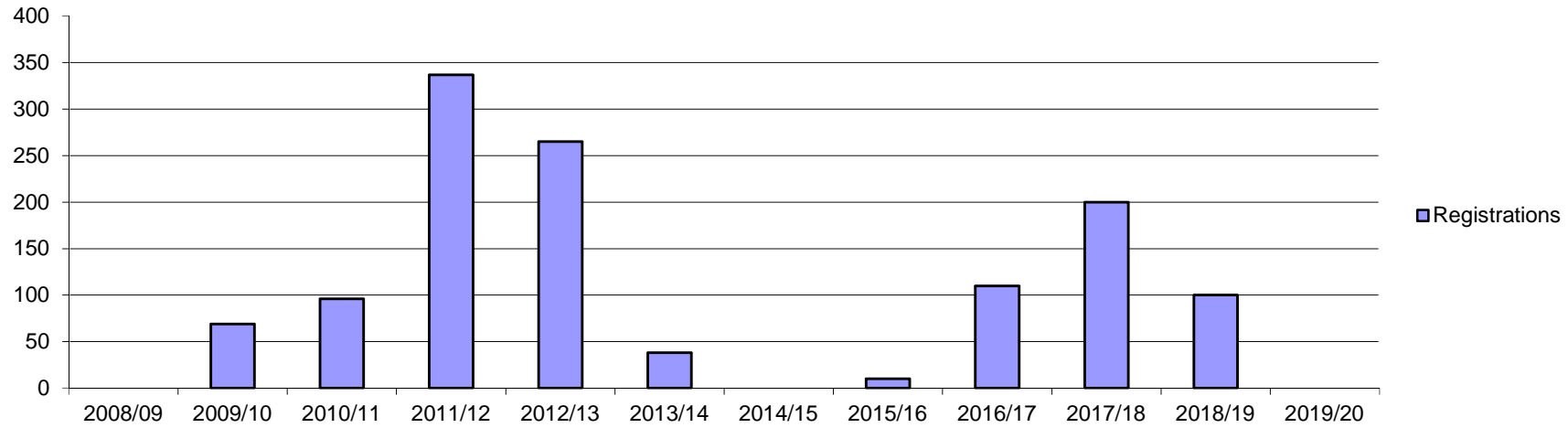
DRAFT only

New registrations - Grandparenting route

	Actual	Actual	Actual	Actual	Actual	Actual	Year 0	Year 1	Year 2	Year 3	Year 4	Year 5
	2008/09	2009/10	2010/11	2011/12	2012/13	2013/14	RF1 2014/15	Forecast 2015/16	Forecast 2016/17	Forecast 2017/18	Forecast 2018/19	Forecast 2019/20
Existing professions												
AS	-	-	-	-	-	-	-	-	-	-	-	-
BS	-	-	-	-	-	-	-	-	-	-	-	-
CH	-	-	-	-	-	-	-	-	-	-	-	-
CS	-	-	-	-	-	-	-	-	-	-	-	-
DT	-	-	-	-	-	-	-	-	-	-	-	-
HAD	-	-	-	-	-	-	-	-	-	-	-	-
OT	-	-	-	-	-	-	-	-	-	-	-	-
ODP	-	-	-	-	-	-	-	-	-	-	-	-
OR	-	-	-	-	-	-	-	-	-	-	-	-
PA	-	-	-	-	-	-	-	-	-	-	-	-
PH	-	-	-	-	-	-	-	-	-	-	-	-
PO	-	-	-	-	-	-	-	-	-	-	-	-
PYL	-	69	96	337	265	38	-	-	-	-	-	-
RA	-	-	-	-	-	-	-	-	-	-	-	-
SL	-	-	-	-	-	-	-	-	-	-	-	-
SW	-	-	-	-	-	-	-	-	-	-	-	-
Total	0	69	96	337	265	38	0	0	0	0	0	0
HMTCM	-	-	-	-	-	-	-	-	100	200	100	0
PHS	-	-	-	-	-	-	-	10	10	-	-	0
Total New	0	0	0	0	0	0	0	10	110	200	100	0
Grand total	0	69	96	337	265	38	0	10	110	200	100	0

UPDATED

DRAFT only



Key assumptions

- Regular two year grandparenting period assumed for any grandparenting professions.

Public Health Specialists

- No reliable data available

HMTCM

- Unknown if grandparenting is required in licensing model
- 200 Herbal Practitioners become registered on the voluntary register per year

DRAFT only

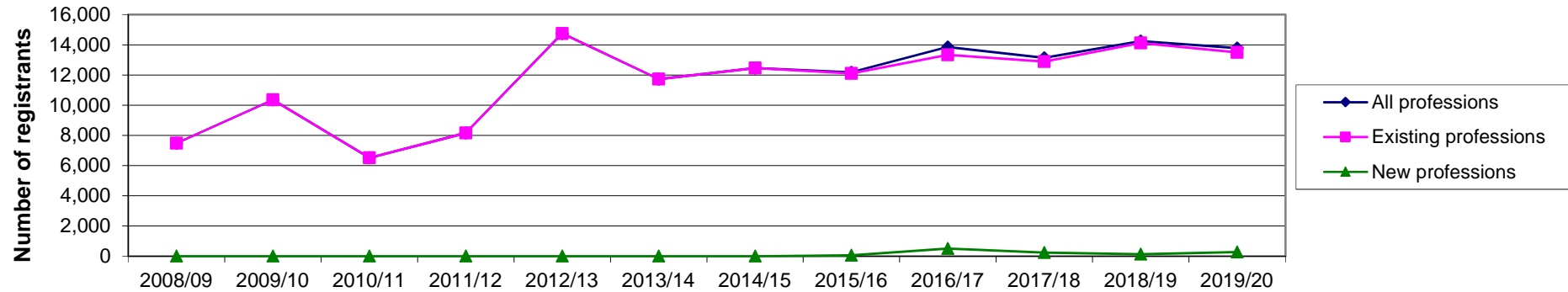
Removal

	Actual 2008/09	Actual 2009/10	Actual 2010/11	Actual 2011/12	Actual 2012/13	Actual 2013/14	Year 0 RF1 2014/15	Year 1 Forecast 2015/16	Year 2 Forecast 2016/17	Year 3 Forecast 2017/18	Year 4 Forecast 2018/19	Year 5 Forecast 2019/20
AS	325	39	209	73	232	85	173	91	194	101	211	109
BS	577	1,612	404	1,106	472	1,132	548	1,125	569	1,164	586	1,193
CH	821	174	800	221	742	323	652	327	664	332	673	336
CS	98	235	80	166	78	248	123	261	135	283	146	302
DT	401	92	315	77	370	207	419	217	455	234	484	247
HAD	-	-	67	33	152	50	101	54	117	62	131	68
OT	744	2,232	431	1,813	485	1,731	854	1,785	917	1,901	969	1,996
ODP	553	138	645	224	319	293	594	307	638	327	675	344
OR	32	87	16	49	22	67	33	68	35	72	37	75
PA	338	572	214	336	256	1,017	503	1,052	541	1,123	574	1,183
PH	2,637	958	2,686	1,030	2,415	1,214	2,445	1,255	2,597	1,322	2,718	1,375
PO	22	50	14	47	21	48	24	50	26	54	28	58
PYL	-	1,541	87	1,117	132	999	498	1,039	533	1,103	562	1,156
RA	642	1,852	339	1,198	445	1,426	701	1,464	751	1,554	791	1,628
SL	296	771	207	674	186	727	353	738	379	784	399	821
SW	-	-	-	-	8,425	2,164	4,447	2,281	4,790	2,477	5,133	2,606
Total	7,486	10,353	6,514	8,164	14,752	11,731	12,466	12,113	13,340	12,893	14,117	13,497
HMTCM	-	-	-	-	-	-	-	-	450	221	118	253
PHS	-	-	-	-	-	-	-	57	57	26	13	26
Total New	0	0	0	0	0	0	0	57	507	247	131	279
Grand total	7,486	10,353	6,514	8,164	14,752	11,731	12,466	12,170	13,847	13,140	14,248	13,776

UPDATED

part done

DRAFT only



Key assumptions

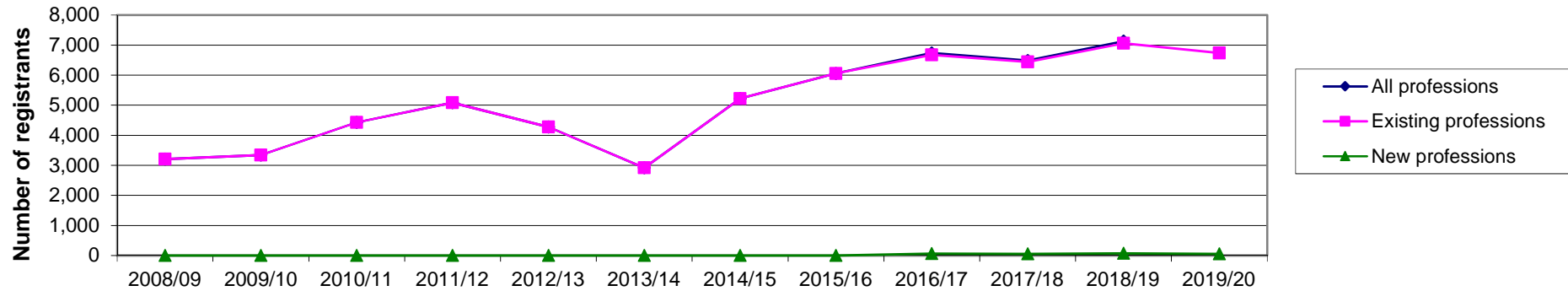
- Renewal years are highlighted.
- Removal figures include voluntary removal, deceased registrants and struck-off registrants.
- 2.5% of professions removed in years where they are not in renewal; 5% of professions removed in years where they are in renewal.
- For new professions 5% removed in years where they are not in renewal; 10% of new professions removed in years where they are in renewal.
- End of cycle removal include 1% to account for retiring registrants and CPD audit triggered removals.
- HMCTM - assume initial 10% removal due to no history of statutory requirement for registration, 5%;5%;2.5% future years
- PYL profession follows usual removal pattern after 3rd year of registration with HCPC
- SocWok profession follows usual removal pattern after 3rd year of registration with HCPC
- PHS - no hard data at present, assumption is 10% first removal, PHS removals as 2.5%, 5% & 2.5% in Yr 3, Yr 4 & Yr 5.
- Figure in highlight reflects the end of registration period removal
- No highlight = intermediate and other removals outside the end of cycle Removal process

Readmissions

	Actual	Actual	Actual	Actual	Actual	Reforecast	Year 0	Year 1	Year 2	Year 3	Year 4	Year 5	
	2008/09	2009/10	2010/11	2011/12	2012/13	2013/14	RF1 2014/15	Forecast 2015/16	Forecast 2016/17	Forecast 2017/18	Forecast 2018/19	Forecast 2019/20	
Existing professions	AS	70	22	193	40	96	19	86	46	97	40	106	44
	BS	231	434	45	728	189	175	274	563	285	582	293	597
	CH	379	96	791	159	430	52	326	164	332	166	336	168
	CS	39	85	3	158	43	26	62	130	68	142	73	151
	DT	185	50	42	99	57	17	209	109	227	117	242	123
	HAD	-	-	4	20	52	16	50	27	58	31	65	34
	OT	298	597	73	1,096	83	289	427	892	459	950	485	998
	ODP	255	77	593	141	274	85	297	153	319	163	338	172
	OR	13	25	1	43	1	21	16	34	17	36	18	38
	PA	135	296	58	123	5	210	251	526	271	562	287	592
	PH	1,217	339	2,514	586	1,801	169	1,223	627	1,299	661	1,359	688
	PO	9	17	1	30	11	13	12	25	13	27	14	29
	PYL	-	560	44	501	10	280	249	519	266	552	281	578
	RA	257	501	57	904	121	194	351	732	375	777	396	814
	SL	119	241	12	456	21	122	177	369	189	392	200	410
	SW	-	-	-	-	1,080	1,228	1,212	1,141	2,395	1,238	2,567	1,303
Total	3,207	3,339	4,431	5,084	4,274	2,916	5,221	6,057	6,670	6,436	7,059	6,738	
<hr/>													
HMTCM	-	-	-	-	-	-	-	-	50	44	59	51	
PHS	-	-	-	-	-	-	-	5	14	6	13	7	
Total	0	0	0	0	0	0	0	0	64	51	72	57	
Grand total	3,207	3,339	4,431	5,084	4,274	2,916	5,221	6,057	6,734	6,487	7,131	6,795	

Highlighted figures reflect readmissions within 6 months of removal
 1.25% of active registrants readmit after lapsing
 2.5% of active registrants readmit after removal in the renewal cycle.

DRAFT only



Key assumptions

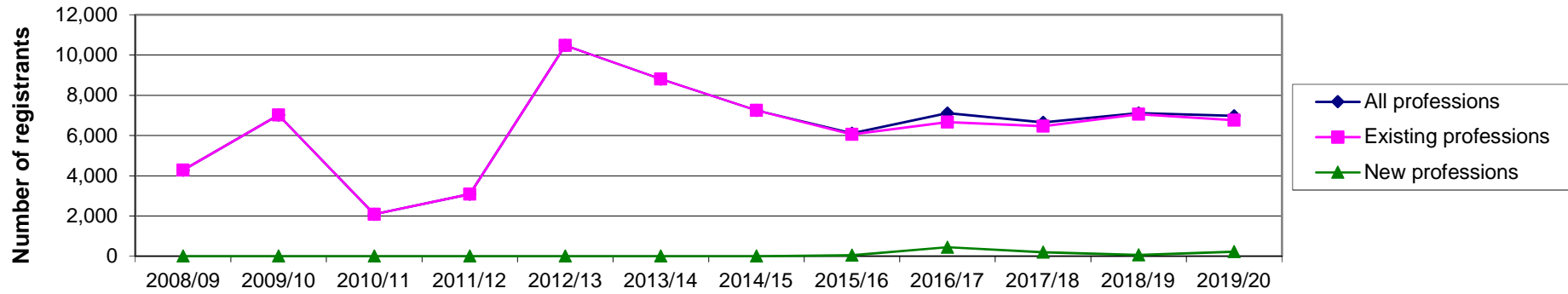
- Renewal years are shown highlighted
- 1.25% of professions readmit in years where they are not in renewal; 2.5% of professions readmit in years where they are in renewal. This is based on previous data that indicates that 50% of those removed do not readmit. Current profns only
- Estimate used for first year for new professions and then calculated using formula above.
- Between 5 and 20% of removed registrants readmit within 30 days of end of cycle removals, and do not pay a readmission fee
- HMTCM not previously regulated so removal and readmission numbers do not follow model of other HCPC professions initially
- This model does not include those Returning to Practice
- For very small professions, rounding issues are impact %age calculations to make arithmetic errors apparent
- Slight percentage adjustments to ensure calculations balance

Removed registrants less readmissions

	Actual 2008/09	Actual 2009/10	Actual 2010/11	Actual 2011/12	Actual 2012/13	Reforecast 2013/14	Year 0 BUDGET 2014/15	Year 1 Forecast 2015/16	Year 2 Forecast 2016/17	Year 3 Forecast 2017/18	Year 4 Forecast 2018/19	Year 5 Forecast 2019/20	
Existing professions	AS	255	17	16	33	136	66	86	46	97	61	106	65
	BS	346	1,178	359	378	283	957	274	563	285	582	293	597
	CH	442	78	9	62	312	271	326	164	332	166	336	168
	CS	59	150	77	8	35	222	62	130	68	142	73	151
	DT	216	42	273	-22	313	190	209	109	227	117	242	123
	HAD	-	-	63	13	100	34	50	27	58	31	65	34
	OT	446	1,635	358	717	402	1,442	427	892	459	950	485	998
	ODP	298	61	52	83	45	208	297	153	319	163	338	172
	OR	19	62	15	6	21	46	16	34	17	36	18	38
	PA	203	276	156	213	251	807	251	526	271	562	287	592
	PH	1,420	619	172	444	614	1,045	1,223	627	1,299	661	1,359	688
	PO	13	33	13	17	10	35	12	25	13	27	14	29
	PYL	-	981	43	616	122	719	249	519	266	552	281	578
	RA	385	1,351	282	294	324	1,232	351	732	375	777	396	814
	SL	177	530	195	218	165	605	177	369	189	392	200	410
	SW					7,345	936	3,235	1,141	2,395	1,238	2,567	1,303
Total	4,279	7,014	2,083	3,080	10,478	8,815	7,245	6,057	6,670	6,457	7,059	6,759	
HMTCM							-	-	400	177	59	203	
PHS	-	-	-	-	-	-	-	52	44	19	0	20	
Total	0	0	0	0	0	0	0	52	444	196	59	222	
Grand total	4,279	7,014	2,083	3,080	10,478	8,815	7,245	6,109	7,114	6,653	7,118	6,982	

Negative values represent multiple removal and readmission for individuals, or readmissions from earlier removal cycles

DRAFT only



Key assumptions

- Deceased registrants, those retiring, emigrating and others permanently leaving the register (voluntary deregistration).

DRAFT only

Applications received for the register of visiting European Health Professionals

	Actual 2008/09	Actual 2009/10	Actual 2010/11	Actual 2011/12	Actual 2012/13	Actual 2013/14	Year 0 BUDGET 2014/15	Year 1 Forecast 2015/16	Year 2 Forecast 2016/17	Year 3 Forecast 2017/18	Year 4 Forecast 2018/19	Year 5 Forecast 2019/20
AS				x	x	2						
BS				x	x	59						
CH				x	x	9						
CS				x	x	7						
DT				x	x	34						
HAD				x	x	2						
OT				x	x	40						
ODP				x	x	3						
OR				x	x	5						
PA				x	x	7						
PH				x	x	221						
PO				x	x	2						
PYL				x	x	31						
RA				x	x	141						
SL				x	x	29						
SW				x	x	22						
Total						614						
HMTCM						-						
PHS						-						
Total						-						
Grand total												

DRAFT only

Key assum

- Number of applications recorded not temporary registrations
- Temporary registrations may be for 1 day to a year
- There is no automatic "renewal" process
- Those seeking to stay over a year are required to apply for registration under the International route

DRAFT only

Appendices

List of acronyms

AS	Arts therapists
BS	Biomedical scientists
CH	Chiropodists and podiatrists
CS	Clinical scientists
DH	Dept of Health
DT	Dietitian
HAD	Hearing aid dispensers
HMTCM	Herbal Medicine and Traditional Chinese Medicine practitioners
OT	Occupational therapists
ODP	Operating department practitioners
OR	Orthoptists
PA	Paramedics
PH	Physiotherapists
PHS	Public Health Specialists
PO	Prosthetists and orthotists
PYL	Psychologists
RA	Radiographers
SL	Speech and language therapists
SW	Social Workers in England
BPS	British Psychological Society
HESA	Higher Education Statistics Authority
CFWI	Council for Workforce Intelligence

UK road application & registration monthly phasing - 1

Table with columns for Year, Month, and various registration categories (AS, BS, CS, DS, MSAN) for years 2013-14 to 2018-19.

Table with columns for Year, Month, and various registration categories (SS, TS, VS) for years 2013-14 to 2018-19.

Table with columns for Year, Month, and various registration categories (CH) for years 2013-14 to 2018-19.

Table with columns for Year, Month, and various registration categories (CS) for years 2013-14 to 2018-19.

UK road application & registration monthly phasing - 2

Table with columns for Year, Month, and various registration categories (DT) for years 2013-14 to 2018-19.

Table with columns for Year, Month, and various registration categories (HND) for years 2013-14 to 2018-19.

Table with columns for Year, Month, and various registration categories (QDP) for years 2013-14 to 2018-19.

Table with columns for Year, Month, and various registration categories (OS) for years 2013-14 to 2018-19.

UK road application & registration monthly phasing - 3

Table with columns for Year, Month, and various registration categories (OT) for years 2013-14 to 2018-19.

Table with columns for Year, Month, and various registration categories (PA) for years 2013-14 to 2018-19.

Table with columns for Year, Month, and various registration categories (PH) for years 2013-14 to 2018-19.

Table with columns for Year, Month, and various registration categories (PO) for years 2013-14 to 2018-19.

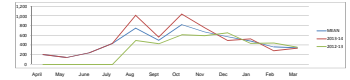
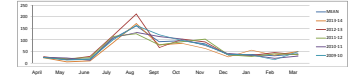
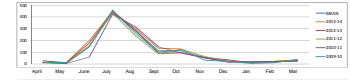
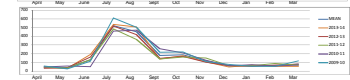
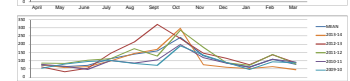
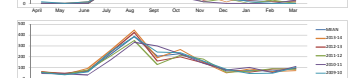
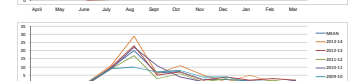
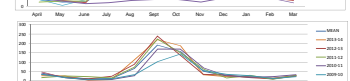
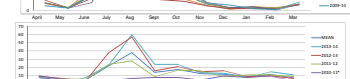
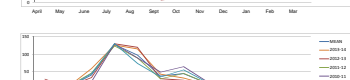
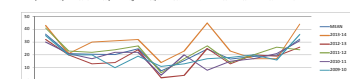
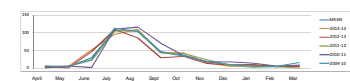
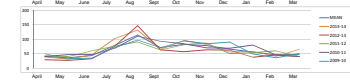
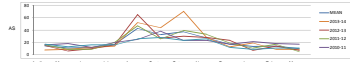
UK road application & registration monthly phasing - 4

Table with columns for Year, Month, and various registration categories (PVL) for years 2013-14 to 2018-19.

Table with columns for Year, Month, and various registration categories (SA) for years 2013-14 to 2018-19.

Table with columns for Year, Month, and various registration categories (SL) for years 2013-14 to 2018-19.

Table with columns for Year, Month, and various registration categories (SR) for years 2013-14 to 2018-19.



International route application phasing (activity fees) - 1

Table with columns for year (2014-16), activity (AS), month (April-March), and values. Includes a 'Monthly weighting' row at the bottom.

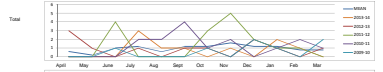


Table with columns for year (2014-16), activity (BS), month (April-March), and values. Includes a 'Monthly weighting' row at the bottom.

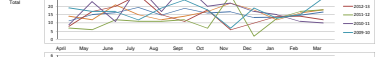


Table with columns for year (2014-16), activity (CH), month (April-March), and values. Includes a 'Monthly weighting' row at the bottom.

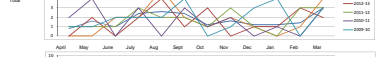
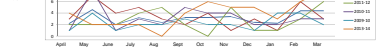


Table with columns for year (2014-16), activity (CS), month (April-March), and values. Includes a 'Monthly weighting' row at the bottom.



International route application phasing (activity fees) - 2

Table with columns for year (2014-16), activity (DT), month (April-March), and values. Includes a 'Monthly weighting' row at the bottom.

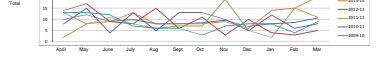


Table with columns for year (2014-16), activity (HND), month (April-March), and values. Includes a 'Monthly weighting' row at the bottom.

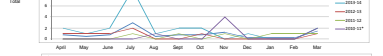
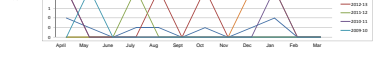


Table with columns for year (2014-16), activity (ODP), month (April-March), and values. Includes a 'Monthly weighting' row at the bottom.



Table with columns for year (2014-16), activity (OR), month (April-March), and values. Includes a 'Monthly weighting' row at the bottom.



International route application phasing (activity fees) - 3

Table with columns for year (2014-16), activity (OT), month (April-March), and values. Includes a 'Monthly weighting' row at the bottom.



Table with columns for year (2014-16), activity (PA), month (April-March), and values. Includes a 'Monthly weighting' row at the bottom.



Table with columns for year (2014-16), activity (PU), month (April-March), and values. Includes a 'Monthly weighting' row at the bottom.

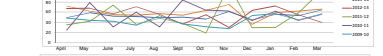
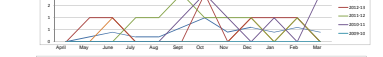


Table with columns for year (2014-16), activity (PO), month (April-March), and values. Includes a 'Monthly weighting' row at the bottom.



International route application phasing (activity fees) - 4

Table with columns for year (2014-16), activity (PVL), month (April-March), and values. Includes a 'Monthly weighting' row at the bottom.

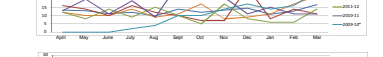


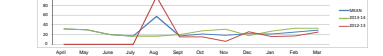
Table with columns for year (2014-16), activity (RA), month (April-March), and values. Includes a 'Monthly weighting' row at the bottom.



Table with columns for year (2014-16), activity (SL), month (April-March), and values. Includes a 'Monthly weighting' row at the bottom.



Table with columns for year (2014-16), activity (SW), month (April-March), and values. Includes a 'Monthly weighting' row at the bottom.



International route registration phasing - 1

Table with columns for year (2014-14 to 2018-14), country code (AG), and months (April to March). Includes a 'Total' row and a 'Monthly weighting' row.

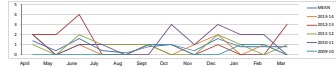


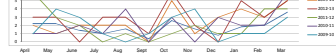
Table with columns for year (2014-14 to 2018-14), country code (EG), and months (April to March). Includes a 'Total' row and a 'Monthly weighting' row.



Table with columns for year (2014-14 to 2018-14), country code (CU), and months (April to March). Includes a 'Total' row and a 'Monthly weighting' row.



Table with columns for year (2014-14 to 2018-14), country code (CS), and months (April to March). Includes a 'Total' row and a 'Monthly weighting' row.



International route registration phasing - 2

Table with columns for year (2014-14 to 2018-14), country code (GT), and months (April to March). Includes a 'Total' row and a 'Monthly weighting' row.

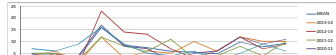


Table with columns for year (2014-14 to 2018-14), country code (HD), and months (April to March). Includes a 'Total' row and a 'Monthly weighting' row.



Table with columns for year (2014-14 to 2018-14), country code (GP), and months (April to March). Includes a 'Total' row and a 'Monthly weighting' row.



Table with columns for year (2014-14 to 2018-14), country code (GE), and months (April to March). Includes a 'Total' row and a 'Monthly weighting' row.



International route registration phasing - 3

Table with columns for year (2014-14 to 2018-14), country code (GT), and months (April to March). Includes a 'Total' row and a 'Monthly weighting' row.



Table with columns for year (2014-14 to 2018-14), country code (FA), and months (April to March). Includes a 'Total' row and a 'Monthly weighting' row.



Table with columns for year (2014-14 to 2018-14), country code (PH), and months (April to March). Includes a 'Total' row and a 'Monthly weighting' row.

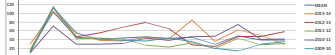


Table with columns for year (2014-14 to 2018-14), country code (FO), and months (April to March). Includes a 'Total' row and a 'Monthly weighting' row.



International route registration phasing - 4

Table with columns for year (2014-14 to 2018-14), country code (PL), and months (April to March). Includes a 'Total' row and a 'Monthly weighting' row.



Table with columns for year (2014-14 to 2018-14), country code (SA), and months (April to March). Includes a 'Total' row and a 'Monthly weighting' row.



Table with columns for year (2014-14 to 2018-14), country code (SL), and months (April to March). Includes a 'Total' row and a 'Monthly weighting' row.

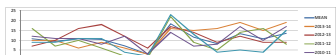


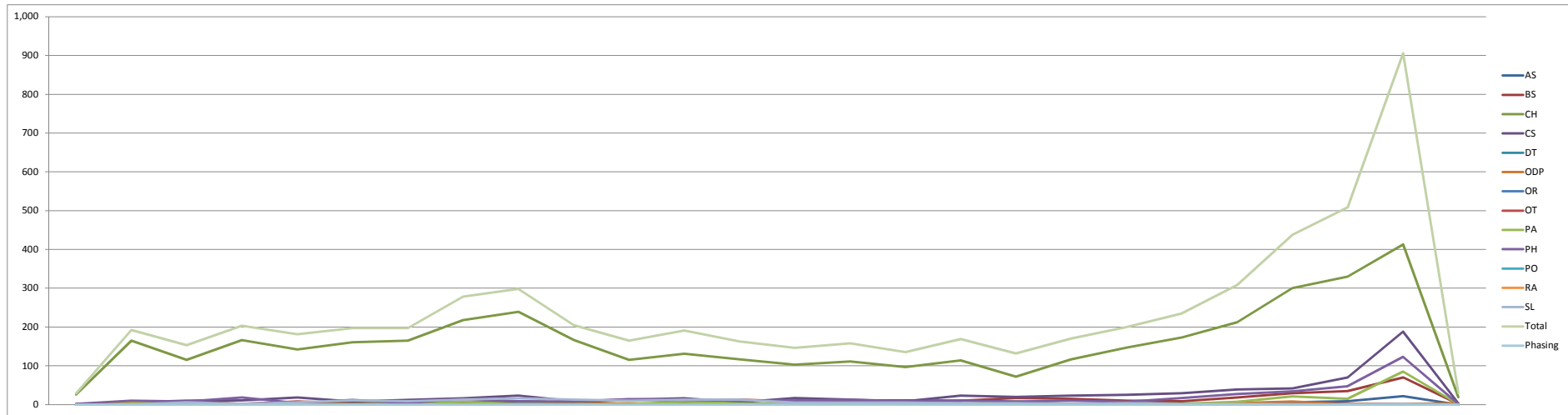
Table with columns for year (2014-14 to 2018-14), country code (SR), and months (April to March). Includes a 'Total' row and a 'Monthly weighting' row.



Grandparenting model phasing based on two year window

Month of GP cycle	1	2	3	4	5	6	7	8	9	10	11	12	13	14	15	16	17	18	19	20	21	22	23	24	25	26
AS	0	0	1	0	1	0	1	2	0	3	0	1	1	1	4	2	3	1	1	3	3	1	6	9	22	0
BS	1	4	9	2	8	4	2	7	8	5	12	10	13	8	11	11	10	17	15	10	9	18	29	35	70	2
CH	26	165	115	166	142	161	165	218	239	166	115	131	117	103	111	97	114	72	117	147	173	212	300	330	413	19
CS	0	6	10	11	18	8	12	16	23	9	13	16	6	17	13	9	23	20	23	25	29	39	42	70	188	3
DT	0	0	0	0	0	0	2	0	0	0	0	0	0	0	0	0	0	0	0	0	0	0	1	0	0	0
ODP	1	3	1	1	0	0	2	2	1	2	3	1	0	0	2	1	0	1	2	1	0	4	8	1	2	3
OR	0	1	0	0	0	0	0	0	0	0	0	0	0	0	0	0	0	0	0	0	0	0	0	0	0	0
OT	0	0	0	0	0	0	0	0	0	0	0	1	0	0	0	1	0	0	0	0	1	0	1	1	1	0
PA	0	5	4	2	1	1	2	7	2	1	1	7	3	1	2	0	2	9	1	3	2	7	21	15	85	1
PH	2	10	8	18	4	12	4	15	9	8	14	12	10	11	12	9	11	8	10	7	17	27	34	47	123	2
PO	0	0	0	1	0	0	0	1	0	0	0	0	0	0	0	0	0	0	0	1	0	0	0	0	0	0
RA	0	1	0	1	1	0	0	0	0	0	0	0	0	0	0	0	0	0	0	0	1	0	0	0	0	0
SL	0	0	6	2	6	11	9	13	16	13	10	13	13	5	5	5	3	4	2	4	1	1	1	0	2	0
Total	29	192	153	203	181	197	197	278	298	205	165	191	163	146	158	135	169	132	170	200	235	308	437	508	906	30
Phasing	0.005	0.032	0.026	0.034	0.030	0.033	0.033	0.046	0.050	0.034	0.028	0.032	0.027	0.024	0.026	0.023	0.028	0.022	0.028	0.033	0.039	0.051	0.073	0.085	0.151	0.005

5,986
1



Assume GP periods will be two years only, but no current start dates

DRAFT only

Profession renewal periods

2007/09/11/13/15/17/19												2008/10/12/14/16/18/20											
Jan	Feb	Mar	Apr	May	Jun	Jul	Aug	Sep	Oct	Nov	Dec	Jan	Feb	Mar	Apr	May	Jun	Jul	Aug	Sep	Oct	Nov	Dec
		PYL			OR/PA			BS			RA			AS						ODP			
						PO/SLT/CS								PH		CH/HAD							
							OT									DT							
																				SW			

2 year registration cycle by profession

	Year 1												Year 2												Year 3												Year 4												Year 5											
	Apr	May	Jun	Jul	Aug	Sep	Oct	Nov	Dec	Jan	Feb	Mar	Apr	May	Jun	Jul	Aug	Sep	Oct	Nov	Dec	Jan	Feb	Mar	Apr	May	Jun	Jul	Aug	Sep	Oct	Nov	Dec	Jan	Feb	Mar	Apr	May	Jun	Jul	Aug	Sep	Oct	Nov	Dec	Jan	Feb	Mar	Apr	May	Jun	Jul	Aug	Sep	Oct	Nov	Dec	Jan	Feb	Mar
Current Professions																																																												
Arts Therapists	76												80												84												84												84											
Biomedical Scientists	76												80												84												84												84											
Chiroprodists	76												80												84												84												84											
Clinical Scientists	76												80												84												84												84											
Dieticians	76												80												84												84												84											
Hearing Aid Dispensers	76												80												84												84												84											
Occupational Therapists	76												80												84												84												84											
Operating Departmental Practitioners	76												80												84												84												84											
Orthoptists	76												80												84												84												84											
Paramedics	76												80												84												84												84											
Physiotherapists	76												80												84												84												84											
Practitioner Psychologists	76												80												84												84												84											
Prosthetists & Orthoptists	76												80												84												84												84											
Radiographers	76												80												84												84												84											
Social Workers	76												80												84												84												84											
Speech & Language Therapists	76												80												84												84												84											
New Professions																																																												
Healthcare Scientists	76												80												84												84												84											
Public Health Specialists	76												80												84												84												84											

Registration Numbers Forecast (FAST)

Roy Dunn, Head of Business Process Improvement
Internal working document

18 June 2014



hcpc health & care
professions
council

Contents

Table of content	Page No.
Key assumptions	3
Number of registrants	4
New professions - transfer of voluntary register	6
New registrations - UK route	8
New applications - International route	10
New registrations - International route	12
New applications - Grandparenting route	14
New registrations - Grandparenting route	16
Removed	18
Readmissions	20
Removed registrants less readmissions	22
Applications received for the register of visiting European Health Professionals	24
Appendices	
Appendix 1 List of acronyms	27
Appendix 2 UK route application & registration monthly phasing	28 - 31
Appendix 3 International route application phasing (scrutiny fees)	32 - 35
Appendix 4 International route registration phasing	36 - 39
Appendix 5 Grandparenting model phasing based on two year windows	40
Appendix 6 Profession renewal periods	41
Appendix 7 2 year registration cycle by profession	42

Key assumptions

- Following a government announcement in early 2012, it is anticipated that PHS will be on the HCPC register by April 2015
- HMTCM voluntary register will be added to the model with transfer on to the HCPC register in October 2015
- Care workers are not included in this forecast as no decision has been made by government as to whether they will be regulated in England or on the type of regulation to be employed

Notation; '0' indicates no records where route is viable. '-' indicates route is not viable

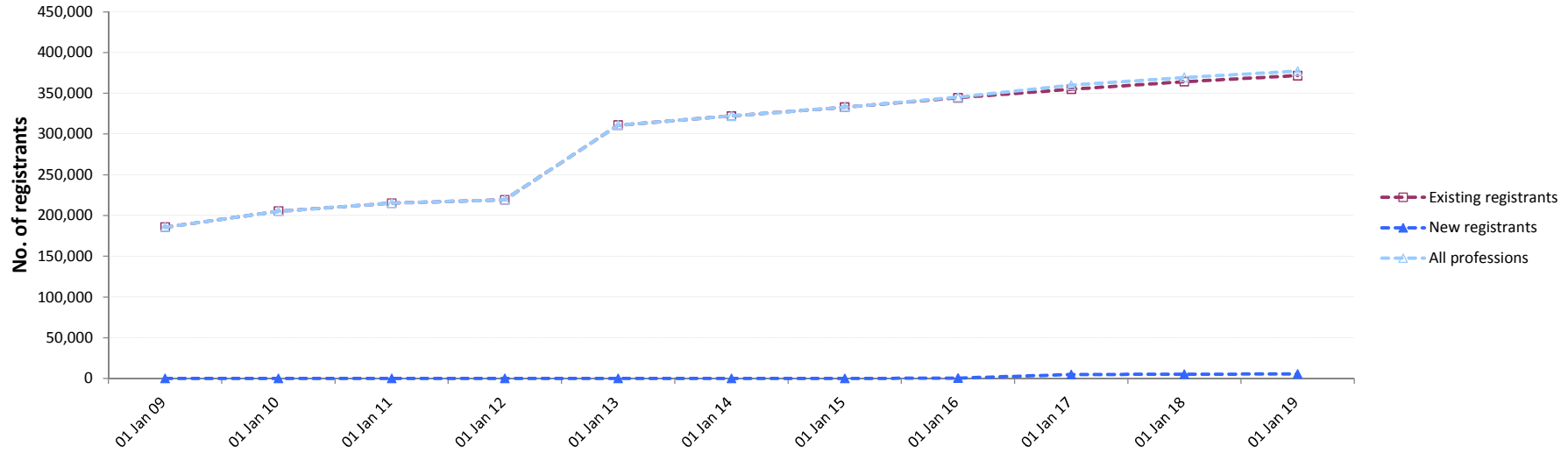
Pale blue highlight indicates manual data input, for new or changing professions

Number of registrants

	Actuals	Actuals	Actuals	Actuals	Actuals	Actuals	Year 0	Year 1	Year 2	Year 3	Year 4	Year 5
Model timeline label	Actuals	Actuals	Actuals	Actuals	Actuals	Actuals	Forecast	Forecast	Forecast	Forecast	Forecast	Forecast
Model period ending	31 Mar 2009	31 Mar 2010	31 Mar 2011	31 Mar 2012	31 Mar 2013	31 Mar 2014	31 Mar 2015	31 Mar 2016	31 Mar 2017	31 Mar 2018	31 Mar 2019	31 Mar 2020
AS	2,576	2,785	2,899	3,121	3,185	3,451	3,648	3,873	4,035	4,222	4,354	4,516
BS	22,381	21,894	22,627	21,886	22,402	21,901	22,503	22,772	23,278	23,447	23,868	23,951
CH	12,581	12,897	12,734	13,005	12,754	13,031	13,081	13,278	13,291	13,455	13,435	13,570
CS	4,405	4,444	4,621	4,665	4,847	4,930	5,217	5,420	5,670	5,831	6,048	6,174
DT	6,700	7,160	7,322	7,782	7,890	8,372	8,695	9,091	9,343	9,681	9,872	10,161
HAD	-	-	1,587	1,722	1,806	2,010	2,165	2,334	2,463	2,612	2,719	2,851
OT	30,122	30,351	32,126	31,946	33,717	34,145	35,692	36,680	38,013	38,771	39,915	40,470
ODP	9,587	10,085	10,313	10,929	11,246	11,881	12,263	12,761	13,067	13,504	13,743	14,125
OR	1,278	1,260	1,303	1,286	1,329	1,316	1,368	1,399	1,444	1,468	1,508	1,525
PA	15,019	15,766	16,782	17,913	19,373	20,100	21,034	21,645	22,465	22,948	23,664	24,033
PH	42,676	44,651	45,002	46,516	46,842	48,908	50,200	51,948	52,897	54,362	55,016	56,236
PO	877	869	901	893	936	948	1,003	1,041	1,089	1,119	1,161	1,184
PYL	-	15,583	17,165	17,845	19,341	19,908	20,771	21,313	22,060	22,478	23,123	23,429
RA	25,318	25,195	26,615	26,480	27,820	28,058	29,278	30,039	31,084	31,659	32,551	32,964
SL	12,169	12,371	13,086	13,173	14,033	14,129	14,751	15,140	15,672	15,965	16,417	16,627
SW	-	-	-	-	83,421	88,949	91,244	95,795	99,073	102,665	104,238	106,461
Existing professions	185,689	205,311	215,083	219,162	310,942	322,037	332,911	344,529	354,943	364,188	371,631	378,278
HMTCM	-	-	-	-	-	-	-	-	4,420	4,733	5,064	5,151
PHS	-	-	-	-	-	-	-	540	519	511	523	515
New professions	-	-	-	-	-	-	-	540	4,939	5,244	5,587	5,667
All professions	185,689	205,311	215,083	219,162	310,942	322,037	332,911	345,069	359,881	369,432	377,218	383,945

Negative values represent multiple removal and readmission for individuals, or readmissions from earlier removal cycles

Number of registrants

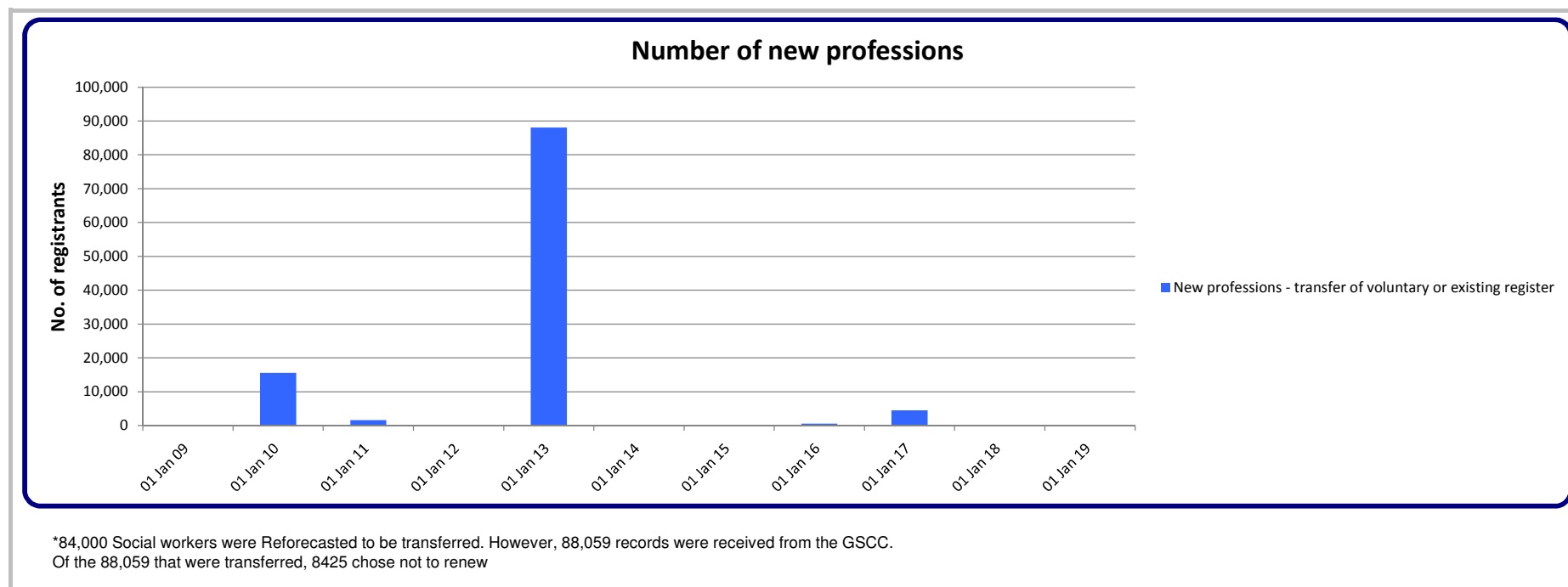


Key assumptions

- All figures on 31st March, Financial Year End for HCPC.
- These figures are calculated from;
 - Number of registrants
 - New registrations - UK route
 - New professions - transfer of voluntary register
 - New registrations - International route
 - New registrations - Grandparenting route
 - Removed registrations
 - Readmitted registration

New professions - register trf

New professions - transfer of voluntary or existing register												
Model timeline label	Actuals	Actuals	Actuals	Actuals	Actuals	Actuals	Year 0 Forecast	Year 1 Forecast	Year 2 Forecast	Year 3 Forecast	Year 4 Forecast	Year 5 Forecast
Model period ending	31 Mar 2009	31 Mar 2010	31 Mar 2011	31 Mar 2012	31 Mar 2013	31 Mar 2014	31 Mar 2015	31 Mar 2016	31 Mar 2017	31 Mar 2018	31 Mar 2019	31 Mar 2020
HAD	-	-	1,573	-	-	-	-	-	-	-	-	-
PYL	-	15,552	-	-	-	-	-	-	-	-	-	-
SW	-	-	-	-	88,059	-	-	-	-	-	-	-
PHS	-	-	-	-	-	-	-	570	-	-	-	-
HMTCM	-	-	-	-	-	-	-	-	4,500	-	-	-
Total	-	15,552	1,573	-	88,059	-	-	570	4,500	-	-	-



Key assumptions

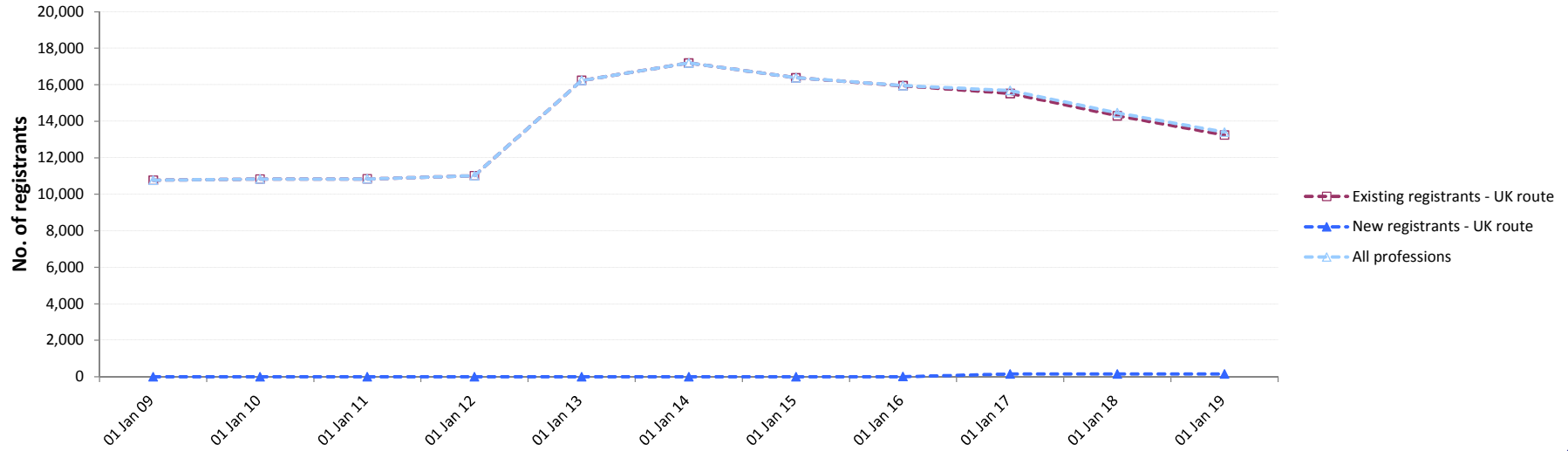
- Public Health Specialists to be regulated by HCPC following government announcement February 2012 to move profession from the UK Public Health Register. Approx 570?
UK Public Health Register transfers 1st April 2015, with renewal 3 months later.
- 4,500 HMTCM practitioners transferring from voluntary registers (estimate) around 1st October 2016, with renewal 3 months later
Actual new prof totals are transferred quantities

UK registrations

	Actuals	Actuals	Actuals	Actuals	Actuals	Actuals	Year 0 Forecast	Year 1 Forecast	Year 2 Forecast	Year 3 Forecast	Year 4 Forecast	Year 5 Forecast
Model timeline label	Actuals	Actuals	Actuals	Actuals	Actuals	Actuals	Forecast	Forecast	Forecast	Forecast	Forecast	Forecast
Model period ending	31 Mar 2009	31 Mar 2010	31 Mar 2011	31 Mar 2012	31 Mar 2013	31 Mar 2014	31 Mar 2015	31 Mar 2016	31 Mar 2017	31 Mar 2018	31 Mar 2019	31 Mar 2020
AS	215	208	248	251	271	280	269	258	248	238	228	219
BS	770	765	800	752	746	752	722	693	665	639	613	589
CH	430	388	406	369	376	376	361	347	333	319	307	294
CS	275	235	228	271	224	328	315	302	290	279	267	257
DT	434	428	442	420	444	453	435	417	401	385	369	355
HAD	-	-	73	151	227	205	197	189	181	174	167	160
OT	1,867	1,724	1,660	1,573	1,742	1,797	1,725	1,656	1,590	1,526	1,465	1,407
ODP	604	498	611	674	715	706	678	651	625	600	576	553
OR	53	45	49	41	61	70	67	65	62	59	57	55
PA	1,505	1,127	1,148	1,529	1,668	1,210	1,162	1,115	1,071	1,028	987	947
PH	2,446	2,170	1,947	1,803	1,937	1,960	1,882	1,806	1,734	1,665	1,598	1,534
PO	48	35	36	32	51	63	60	58	56	54	51	49
PYL	-	1,225	1,274	1,224	1,202	1,059	1,017	976	937	899	863	829
RA	1,316	1,221	1,193	1,201	1,343	1,385	1,330	1,276	1,225	1,176	1,129	1,084
SL	807	757	723	725	831	689	661	635	610	585	562	539
SW	-	-	-	-	4,395	5,857	5,500	5,500	5,500	4,675	4,000	3,400
Existing professions	10,770	10,826	10,838	11,016	16,233	17,190	16,380	15,944	15,527	14,301	13,241	12,271
HMTCM	-	-	-	-	-	-	-	-	150	150	150	150
PHS	-	-	-	-	-	-	-	10	10	10	10	10
New professions	-	-	-	-	-	-	-	10	160	160	160	160
All professions	10,770	10,826	10,838	11,016	16,233	17,190	16,380	15,954	15,687	14,461	13,401	12,431

Negative values represent multiple removal and readmission for individuals, or readmissions from earlier removal cycles

Number of registrants



Key assumptions

- UK route registrations based on historic data projected forward, with additional 10% fall in Year 0 for most professions.
- 2010/11 to 2014/15: generic 4% fall p/a (excluding SW profession). May continue medium term.
- Figures for all new professions are estimated based on DH data, unless otherwise specified.
- Social Work students graduating will fall by 10% starting 2016/17 following decrease in numbers of programmes
- PHS, initial research suggests 10 new UK route registrations per year
- HMTCM, initial research suggests we will receive 75 in first year of register (due to reg opening 1st Oct), 150 pa thereafter.

International applications

	Actuals	Actuals	Actuals	Actuals	Actuals	Actuals	Year 0 Forecast	Year 1 Forecast	Year 2 Forecast	Year 3 Forecast	Year 4 Forecast	Year 5 Forecast
Model timeline label	Actuals	Actuals	Actuals	Actuals	Actuals	Actuals	Forecast	Forecast	Forecast	Forecast	Forecast	Forecast
Model period ending	31 Mar 2009	31 Mar 2010	31 Mar 2011	31 Mar 2012	31 Mar 2013	31 Mar 2014	31 Mar 2015	31 Mar 2016	31 Mar 2017	31 Mar 2018	31 Mar 2019	31 Mar 2020
AS	11	7	15	16	11	9	14	13	11	10	9	8
BS	218	205	220	143	172	191	157	141	127	114	103	93
CH	22	23	19	21	19	20	19	17	15	14	12	11
CS	25	28	38	33	42	47	42	38	34	31	28	25
DT	107	96	112	110	105	122	105	95	85	77	69	62
HAD	-	-	7	6	7	22	7	6	6	5	5	4
OT	330	265	324	258	256	260	256	230	207	187	168	151
ODP	5	5	4	4	11	7	11	10	9	8	7	6
OR	3	1	2	1	3	2	3	3	2	2	2	2
PA	26	28	27	25	34	40	34	31	28	25	22	20
PH	622	528	642	626	671	715	671	604	544	489	440	396
PO	9	-	7	8	7	3	7	6	6	5	5	4
PYL	-	112	191	124	152	150	152	137	123	111	100	90
RA	312	215	320	299	235	301	235	212	190	171	154	139
SL	120	133	137	153	121	153	121	109	98	88	79	71
SW	-	-	-	-	218	306	210	189	170	153	138	124
Existing professions	1,810	1,646	2,065	1,827	2,064	2,348	2,044	1,840	1,656	1,490	1,341	1,207
HMTCM	-	-	-	-	-	-	-	-	150	150	150	150
PHS	-	-	-	-	-	-	-	3	3	3	3	3
New professions	-	-	-	-	-	-	-	3	153	153	153	153
All professions	1,810	1,646	2,065	1,827	2,064	2,348	2,044	1,843	1,809	1,643	1,494	1,360

Negative values represent multiple removal and readmission for individuals, or readmissions from earlier removal cycles

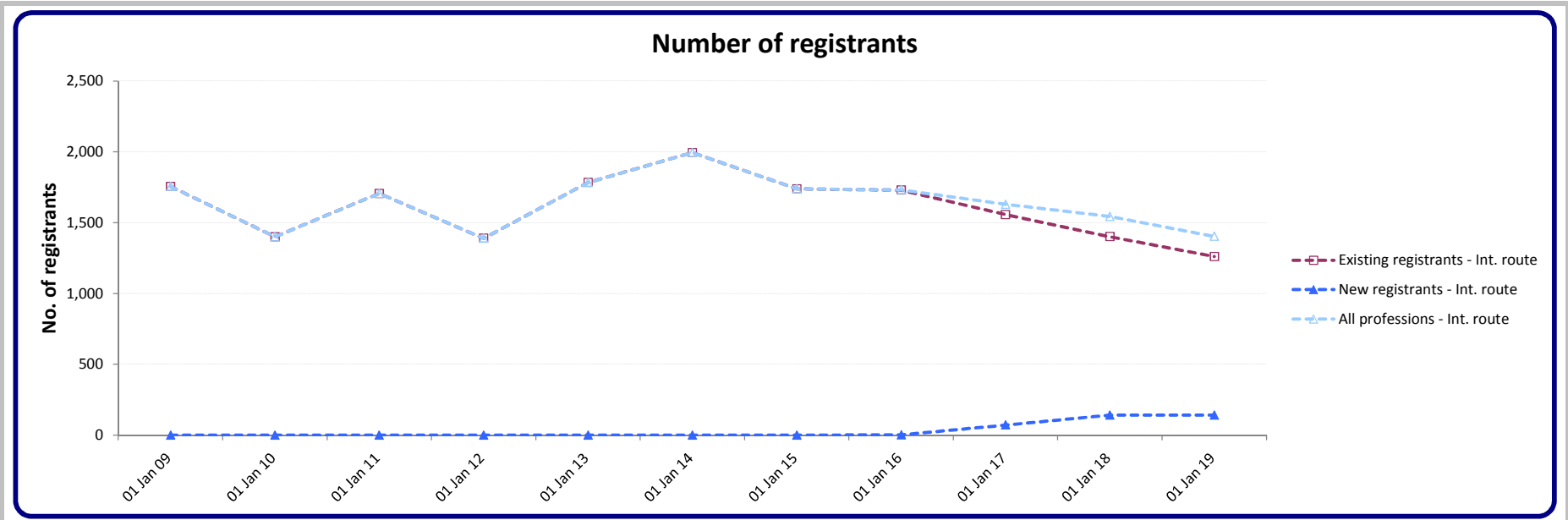
Key assumptions

- Only applications where the scrutiny fee is retained are counted
- Applicants applying in one financial year may be registered in subsequent years
- Some applications will not result in registration
- Some initial assessments will result in POA or Aptitude Tests which may occur much later
- EU Temporary and Occasional applicants are not included here (see page 24)
- SW project 200 applications from Year 1, then decline
- HMTCM start part way through year 2 so only 50% of INTL predicted can apply or register.

International registrations

	Actuals	Actuals	Actuals	Actuals	Actuals	Actuals	Year 0 Forecast	Year 1 Forecast	Year 2 Forecast	Year 3 Forecast	Year 4 Forecast	Year 5 Forecast
Model timeline label	Actuals	Actuals	Actuals	Actuals	Actuals	Actuals	Forecast	Forecast	Forecast	Forecast	Forecast	Forecast
Model period ending	31 Mar 2009	31 Mar 2010	31 Mar 2011	31 Mar 2012	31 Mar 2013	31 Mar 2014	31 Mar 2015	31 Mar 2016	31 Mar 2017	31 Mar 2018	31 Mar 2019	31 Mar 2020
AS	6	4	15	10	14	8	14	13	11	10	9	8
BS	236	170	202	122	157	157	154	139	125	112	101	91
CH	27	14	18	14	16	20	15	14	12	11	10	9
CS	28	22	25	25	34	30	34	31	28	25	22	20
DT	97	84	88	78	101	85	97	87	79	71	64	57
HAD	-	-	5	5	8	13	8	7	6	6	5	5
OT	283	258	289	217	252	259	249	224	202	182	163	147
ODP	2	4	3	3	2	4	1	1	1	1	1	1
OR	3	1	1	2	1	-	1	1	1	1	1	1
PA	22	24	25	20	24	27	24	22	19	17	16	14
PH	608	472	501	464	641	613	633	570	513	461	415	374
PO	3	1	6	7	6	4	6	5	5	4	4	4
PYL	-	37	127	91	96	129	95	86	77	69	62	56
RA	336	200	270	216	241	269	241	217	195	176	158	142
SL	105	110	130	116	139	144	137	123	111	100	90	81
SW	-	-	-	-	51	232	30	192	173	156	140	126
Existing professions	1,756	1,401	1,705	1,390	1,783	1,994	1,739	1,730	1,557	1,401	1,261	1,135
HMTCM	-	-	-	-	-	-	-	-	70	140	140	140
PHS	-	-	-	-	-	-	-	2	2	2	2	2
New professions	-	-	-	-	-	-	-	2	72	142	142	142
All professions	1,756	1,401	1,705	1,390	1,783	1,994	1,739	1,732	1,629	1,543	1,403	1,277

Negative values represent multiple removal and readmission for individuals, or readmissions from earlier removal cycles



Key assumptions

- Reforecast year reset to last financial years "Actuals" each year
- 10% drop per year in new International registrants projected forward from Reforecast year.
- Link between application date and registration date variable between 1 month and 8 months assuming POA/TOC is not required
- Public Health Specialists international route quantities poorly constrained, perhaps 2 per year initially
- Model for Herbal Medicine & Traditional Chinese medicine practitioners, poorly constrained, perhaps 140 per year initially
- HMTCM start part way through year 2 so only 50% of INTL predicted can apply or register.
- SW INTL registrations around 192 in second full year of HCPC registration (Year 1)

Grandparents applications

	Actuals	Actuals	Actuals	Actuals	Actuals	Actuals	Year 0	Year 1	Year 2	Year 3	Year 4	Year 5
Model timeline label	Actuals	Actuals	Actuals	Actuals	Actuals	Actuals	Forecast	Forecast	Forecast	Forecast	Forecast	Forecast
Model period ending	31 Mar 2009	31 Mar 2010	31 Mar 2011	31 Mar 2012	31 Mar 2013	31 Mar 2014	31 Mar 2015	31 Mar 2016	31 Mar 2017	31 Mar 2018	31 Mar 2019	31 Mar 2020
AS	-	-	-	-	-	-	-	-	-	-	-	-
BS	-	-	-	-	-	-	-	-	-	-	-	-
CH	-	-	-	-	-	-	-	-	-	-	-	-
CS	-	-	-	-	-	-	-	-	-	-	-	-
DT	-	-	-	-	-	-	-	-	-	-	-	-
HAD	-	-	-	-	-	-	-	-	-	-	-	-
OT	-	-	-	-	-	-	-	-	-	-	-	-
ODP	-	-	-	-	-	-	-	-	-	-	-	-
OR	-	-	-	-	-	-	-	-	-	-	-	-
PA	-	-	-	-	-	-	-	-	-	-	-	-
PH	-	-	-	-	-	-	-	-	-	-	-	-
PO	-	-	-	-	-	-	-	-	-	-	-	-
PYL	-	69	96	337	265	-	-	-	-	-	-	-
RA	-	-	-	-	-	-	-	-	-	-	-	-
SL	-	-	-	-	-	-	-	-	-	-	-	-
SW	-	-	-	-	-	-	-	-	-	-	-	-
Existing professions	0	69	96	337	265	0	0	0	0	0	0	0
HMTCM	-	-	-	-	-	-	-	-	120	220	100	-
PHS	-	-	-	-	-	-	-	10	10	-	-	-
New professions	-	-	-	-	-	-	-	10	130	220	100	-
All professions	-	69	96	337	265	-	-	10	130	220	100	-

Negative values represent multiple removal and readmission for individuals, or readmissions from earlier removal cycles

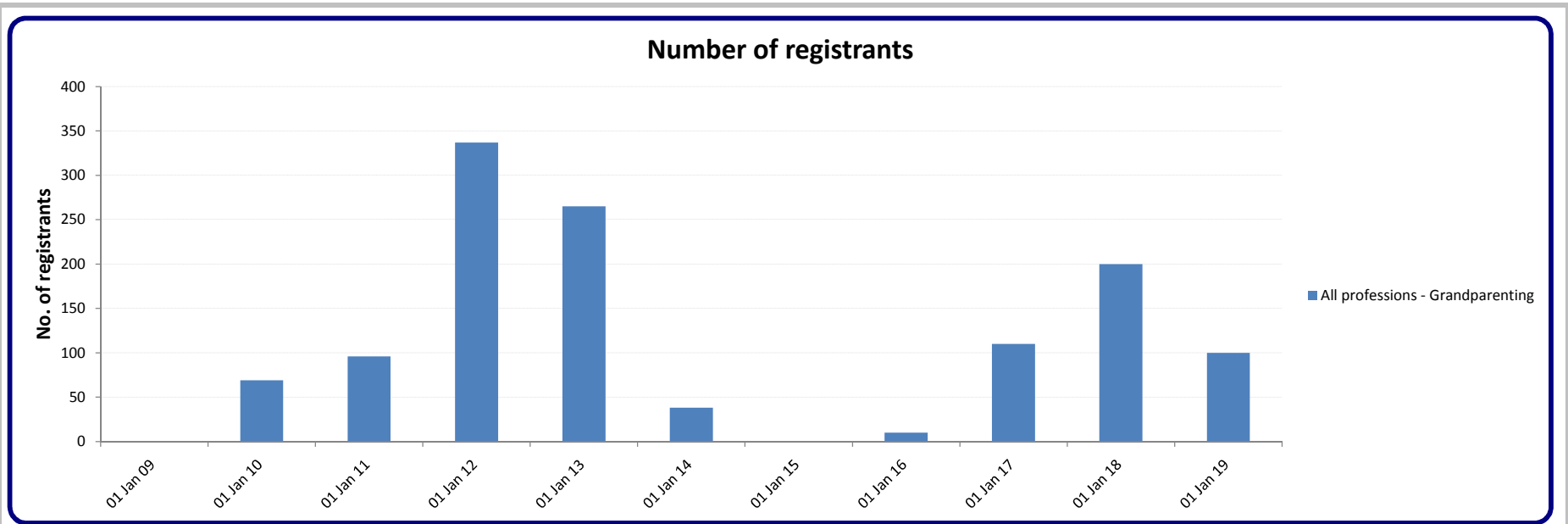
Key assumptions

- Grandparenting route is typically run for a two year period starting with the opening of a new professional register
- Where multiple modalities or divisions occur, a registration resulting from an existing register may have additional modalities or divisions applied via the Grandparenting route
- However, the number of registrations does not increase when the applicant successfully applies, but has an additional modality or division listed.
- Predictions of applicants are difficult to delimit
- Phasing of applicants via the grandparenting route are based on previous trends but professional influences may cause large variances from the forecast
- HMTCM grandparenting application route starts on 1 October 2015 and open for 24 months.
- PHS grandparenting application route starts on 1 April 2015 and is open for 24 months.

Grandparenting registration

	Actuals	Actuals	Actuals	Actuals	Actuals	Actuals	Year 0	Year 1	Year 2	Year 3	Year 4	Year 5
Model timeline label	Actuals	Actuals	Actuals	Actuals	Actuals	Actuals	Forecast	Forecast	Forecast	Forecast	Forecast	Forecast
Model period ending	31 Mar 2009	31 Mar 2010	31 Mar 2011	31 Mar 2012	31 Mar 2013	31 Mar 2014	31 Mar 2015	31 Mar 2016	31 Mar 2017	31 Mar 2018	31 Mar 2019	31 Mar 2020
AS	-	-	-	-	-	-	-	-	-	-	-	-
BS	-	-	-	-	-	-	-	-	-	-	-	-
CH	-	-	-	-	-	-	-	-	-	-	-	-
CS	-	-	-	-	-	-	-	-	-	-	-	-
DT	-	-	-	-	-	-	-	-	-	-	-	-
HAD	-	-	-	-	-	-	-	-	-	-	-	-
OT	-	-	-	-	-	-	-	-	-	-	-	-
ODP	-	-	-	-	-	-	-	-	-	-	-	-
OR	-	-	-	-	-	-	-	-	-	-	-	-
PA	-	-	-	-	-	-	-	-	-	-	-	-
PH	-	-	-	-	-	-	-	-	-	-	-	-
PO	-	-	-	-	-	-	-	-	-	-	-	-
PYL	-	69	96	337	265	38	-	-	-	-	-	-
RA	-	-	-	-	-	-	-	-	-	-	-	-
SL	-	-	-	-	-	-	-	-	-	-	-	-
SW	-	-	-	-	-	-	-	-	-	-	-	-
Existing professions	0	69	96	337	265	38	0	0	0	0	0	0
HMTCM	-	-	-	-	-	-	-	-	100	200	100	-
PHS	-	-	-	-	-	-	-	10	10	-	-	-
New professions	-	-	-	-	-	-	-	10	110	200	100	-
All professions	-	69	96	337	265	38	-	10	110	200	100	-

Negative values represent multiple removal and readmission for individuals, or readmissions from earlier removal cycles



Key assumptions

- Regular two year grandparenting period assumed for any grandparenting professions.

Public Health Specialists

- No reliable data available

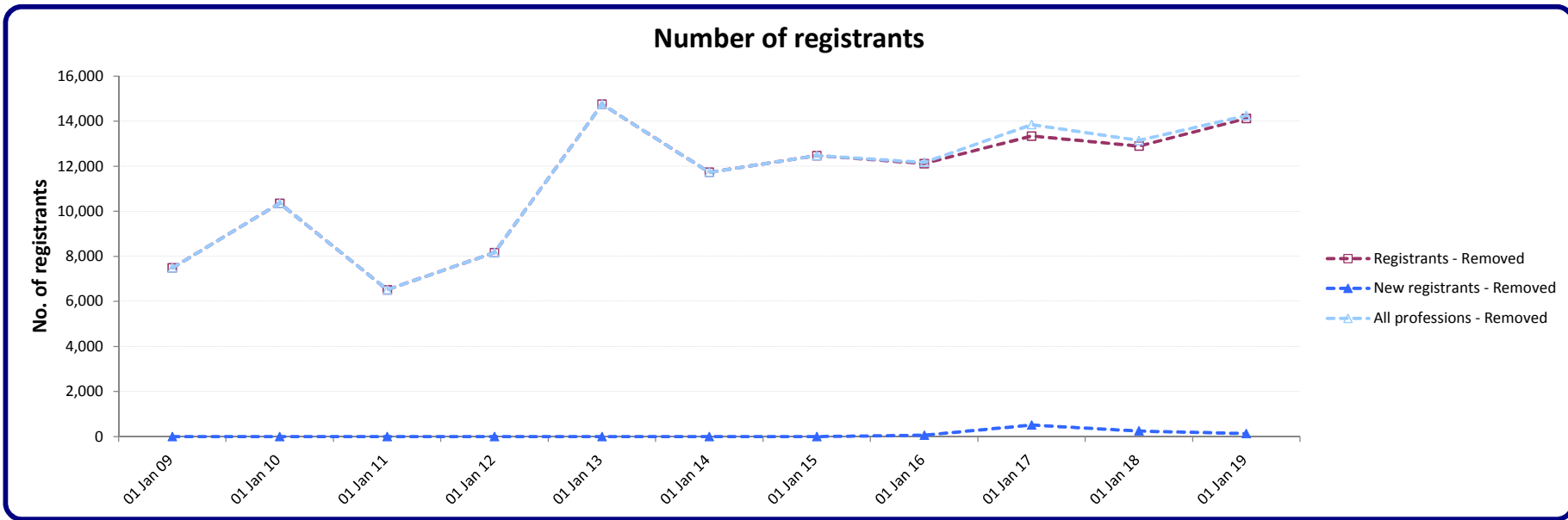
HMTCM

- Unknown if grandparenting is required in licensing model
- 200 Herbal Practitioners become registered on the voluntary register per year

Removal registrations

	Actuals	Actuals	Actuals	Actuals	Actuals	Actuals	Year 0 Forecast	Year 1 Forecast	Year 2 Forecast	Year 3 Forecast	Year 4 Forecast	Year 5 Forecast
Model timeline label	Actuals	Actuals	Actuals	Actuals	Actuals	Actuals	Forecast	Forecast	Forecast	Forecast	Forecast	Forecast
Model period ending	31 Mar 2009	31 Mar 2010	31 Mar 2011	31 Mar 2012	31 Mar 2013	31 Mar 2014	31 Mar 2015	31 Mar 2016	31 Mar 2017	31 Mar 2018	31 Mar 2019	31 Mar 2020
AS	325	39	209	73	232	85	173	91	194	101	211	109
BS	577	1,612	404	1,106	472	1,132	548	1,125	569	1,164	586	1,193
CH	821	174	800	221	742	323	652	327	664	332	673	336
CS	98	235	80	166	78	248	123	261	135	283	146	302
DT	401	92	315	77	370	207	419	217	455	234	484	247
HAD	-	-	67	33	152	50	101	54	117	62	131	68
OT	744	2,232	431	1,813	485	1,731	854	1,785	917	1,901	969	1,996
ODP	553	138	645	224	319	293	594	307	638	327	675	344
OR	32	87	16	49	22	67	33	68	35	72	37	75
PA	338	572	214	336	256	1,017	503	1,052	541	1,123	574	1,183
PH	2,637	958	2,686	1,030	2,415	1,214	2,445	1,255	2,597	1,322	2,718	1,375
PO	22	50	14	47	21	48	24	50	26	54	28	58
PYL	-	1,541	87	1,117	132	999	498	1,039	533	1,103	562	1,156
RA	642	1,852	339	1,198	445	1,426	701	1,464	751	1,554	791	1,628
SL	296	771	207	674	186	727	353	738	379	784	399	821
SW	-	-	-	-	8,425	2,164	4,447	2,281	4,790	2,477	5,133	2,606
Existing professions	7,486	10,353	6,514	8,164	14,752	11,731	12,466	12,113	13,340	12,893	14,117	13,497
HMTCM	-	-	-	-	-	-	-	-	450	221	118	253
PHS	-	-	-	-	-	-	-	57	57	26	13	26
New professions	-	-	-	-	-	-	-	57	507	247	131	279
All professions	7,486	10,353	6,514	8,164	14,752	11,731	12,466	12,170	13,847	13,140	14,248	13,776

Negative values represent multiple removal and readmission for individuals, or readmissions from earlier removal cycles



Key assumptions

- Renewal years are highlighted.
- Removal figures include voluntary removal, deceased registrants and struck-off registrants.
- 2.5% of professions removed in years where they are not in renewal; 5% of professions removed in years where they are in renewal.
- For new professions 5% removed in years where they are not in renewal; 10% of new professions removed in years where they are in renewal.
- End of cycle removal include 1% to account for retiring registrants and CPD audit triggered removals.
- HMCTM - assume initial 10% removal due to no history of statutory requirement for registration, 5%;5%;2.5% future years
- PYL profession follows usual removal pattern after 3rd year of registration with HCPC
- SocWok profession follows usual removal pattern after 3rd year of registration with HCPC
- PHS - no hard data at present, assumption is 10% first removal, PHS removals as 2.5%, 5% & 2.5% in Yr 3, Yr 4 & Yr 5.
- Figure in highlight reflects the end of registration period removal
- No highlight = intermediate and other removals outside the end of cycle Removal process

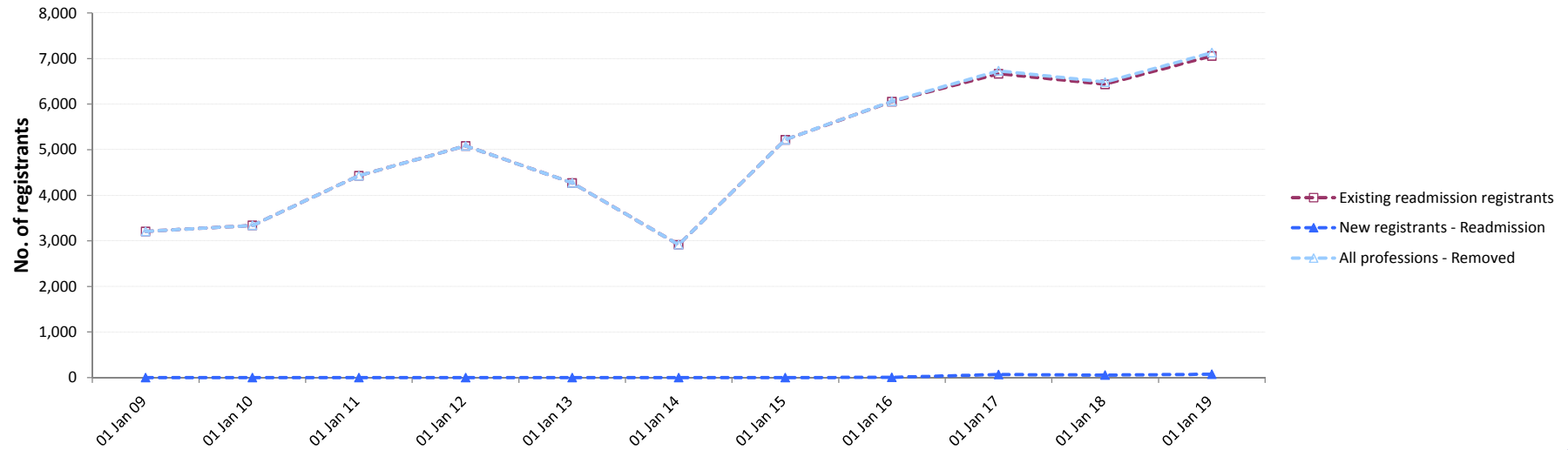
Readmission registrations

	Actuals	Actuals	Actuals	Actuals	Actuals	Actuals	Year 0 Forecast	Year 1 Forecast	Year 2 Forecast	Year 3 Forecast	Year 4 Forecast	Year 5 Forecast
Model timeline label	Actuals	Actuals	Actuals	Actuals	Actuals	Actuals	Forecast	Forecast	Forecast	Forecast	Forecast	Forecast
Model period ending	31 Mar 2009	31 Mar 2010	31 Mar 2011	31 Mar 2012	31 Mar 2013	31 Mar 2014	31 Mar 2015	31 Mar 2016	31 Mar 2017	31 Mar 2018	31 Mar 2019	31 Mar 2020
AS	70	22	193	40	96	19	86	46	97	40	106	44
BS	231	434	45	728	189	175	274	563	285	582	293	597
CH	379	96	791	159	430	52	326	164	332	166	336	168
CS	39	85	3	158	43	26	62	130	68	142	73	151
DT	185	50	42	99	57	17	209	109	227	117	242	123
HAD	-	-	4	20	52	16	50	27	58	31	65	34
OT	298	597	73	1,096	83	289	427	892	459	950	485	998
ODP	255	77	593	141	274	85	297	153	319	163	338	172
OR	13	25	1	43	1	21	16	34	17	36	18	38
PA	135	296	58	123	5	210	251	526	271	562	287	592
PH	1,217	339	2,514	586	1,801	169	1,223	627	1,299	661	1,359	688
PO	9	17	1	30	11	13	12	25	13	27	14	29
PYL	-	560	44	501	10	280	249	519	266	552	281	578
RA	257	501	57	904	121	194	351	732	375	777	396	814
SL	119	241	12	456	21	122	177	369	189	392	200	410
SW	-	-	-	-	1,080	1,228	1,212	1,141	2,395	1,238	2,567	1,303
Existing professions	3,207	3,339	4,431	5,084	4,274	2,916	5,221	6,057	6,670	6,436	7,059	6,738
HMTCM	-	-	-	-	-	-	-	-	50	44	59	51
PHS	-	-	-	-	-	-	-	5	14	6	13	7
New professions	-	-	-	-	-	-	-	5	64	51	72	57
All professions	3,207	3,339	4,431	5,084	4,274	2,916	5,221	6,062	6,734	6,487	7,131	6,795

Negative values represent multiple removal and readmission for individuals, or readmissions from earlier removal cycles

Highlighted figures reflect readmissions within 6 months of removal
 1.25% of active registrants readmit after lapsing
 2.5% of active registrants readmit after removal in the renewal cycle.

Number of registrants



Key assumptions

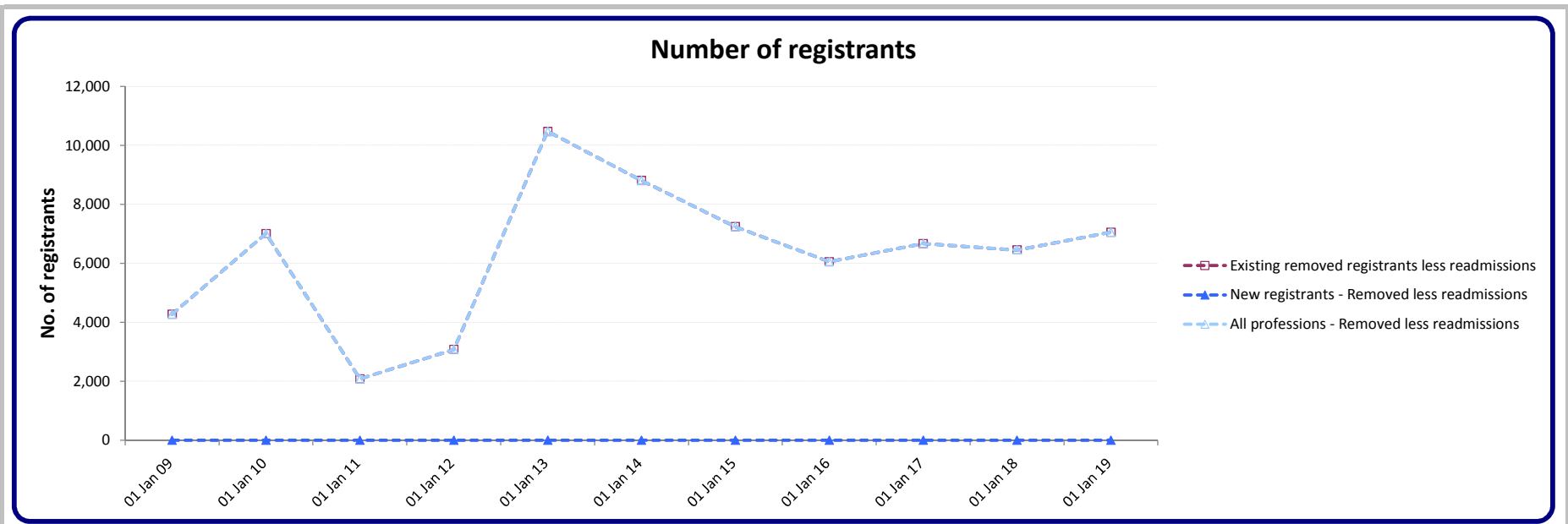
- Renewal years are shown highlighted
- 1.25% of professions readmit in years where they are not in renewal; 2.5% of professions readmit in years where they are in renewal. This is based on previous data that indicates that 50% of those removed do not readmit. Current profns only
- Estimate used for first year for new professions and then calculated using formula above.
- Between 5 and 20% of removed registrants readmit within 30 days of end of cycle removals, and do not pay a readmission fee
- HMTCM not previously regulated so removal and readmission numbers do not follow model of other HCPC professions initially
- This model does not include those Returning to Practice
- For very small professions, rounding issues are impact %age calculations to make arithmetic errors apparent
- Slight percentage adjustments to ensure calculations balance

Removed less Readmission

	Actuals	Actuals	Actuals	Actuals	Actuals	Actuals	Year 0 Forecast	Year 1 Forecast	Year 2 Forecast	Year 3 Forecast	Year 4 Forecast	Year 5 Forecast
Model timeline label	Actuals	Actuals	Actuals	Actuals	Actuals	Actuals	Forecast	Forecast	Forecast	Forecast	Forecast	Forecast
Model period ending	31 Mar 2009	31 Mar 2010	31 Mar 2011	31 Mar 2012	31 Mar 2013	31 Mar 2014	31 Mar 2015	31 Mar 2016	31 Mar 2017	31 Mar 2018	31 Mar 2019	31 Mar 2020
AS	255	17	16	33	136	66	86	46	97	61	106	65
BS	346	1,178	359	378	283	957	274	563	285	582	293	597
CH	442	78	9	62	312	271	326	164	332	166	336	168
CS	59	150	77	8	35	222	62	130	68	142	73	151
DT	216	42	273	(22)	313	190	209	109	227	117	242	123
HAD	-	-	63	13	100	34	50	27	58	31	65	34
OT	446	1,635	358	717	402	1,442	427	892	459	950	485	998
ODP	298	61	52	83	45	208	297	153	319	163	338	172
OR	19	62	15	6	21	46	16	34	17	36	18	38
PA	203	276	156	213	251	807	251	526	271	562	287	592
PH	1,420	619	172	444	614	1,045	1,223	627	1,299	661	1,359	688
PO	13	33	13	17	10	35	12	25	13	27	14	29
PYL	-	981	43	616	122	719	249	519	266	552	281	578
RA	385	1,351	282	294	324	1,232	351	732	375	777	396	814
SL	177	530	195	218	165	605	177	369	189	392	200	410
SW	-	-	-	-	7,345	936	3,235	1,141	2,395	1,238	2,567	1,303
Existing professions	4,279	7,014	2,083	3,080	10,478	8,815	7,245	6,057	6,670	6,457	7,059	6,759
HMTCM	-	-	-	-	-	-	-	-	-	-	-	-
PHS	-	-	-	-	-	-	-	-	-	-	-	-
New professions	-	-	-	-	-	-	-	-	-	-	-	-
All professions	4,279	7,014	2,083	3,080	10,478	8,815	7,245	6,057	6,670	6,457	7,059	6,759

Negative values represent multiple removal and readmission for individuals, or readmissions from earlier removal cycles

Calculated by subtracting readmissions number from lapsed number in year.



Key assumptions

- Deceased registrants, those retiring, emigrating and others permantantly leaving the register (voluntary deregistration).

Visiting professional

	Actuals	Actuals	Actuals	Actuals	Actuals	Actuals	Year 0 Forecast	Year 1 Forecast	Year 2 Forecast	Year 3 Forecast	Year 4 Forecast	Year 5 Forecast
Model timeline label	Actuals	Actuals	Actuals	Actuals	Actuals	Actuals	Forecast	Forecast	Forecast	Forecast	Forecast	Forecast
Model period ending	31 Mar 2009	31 Mar 2010	31 Mar 2011	31 Mar 2012	31 Mar 2013	31 Mar 2014	31 Mar 2015	31 Mar 2016	31 Mar 2017	31 Mar 2018	31 Mar 2019	31 Mar 2020
AS				x	x	2						
BS				x	x	59						
CH				x	x	9						
CS				x	x	7						
DT				x	x	34						
HAD				x	x	2						
OT				x	x	40						
ODP				x	x	3						
OR				x	x	5						
PA				x	x	7						
PH				x	x	221						
PO				x	x	2						
PYL				x	x	31						
RA				x	x	141						
SL				x	x	29						
SW				x	x	22						
Existing professions	0	0	0	0	0	614	0	0	0	0	0	0
HMTCM	-	-	-	-	-	-	-	-	-	-	-	-
PHS	-	-	-	-	-	-	-	-	-	-	-	-
New professions	-	-	-	-	-	-	-	-	-	-	-	-
All professions	-	-	-	-	-	614	-	-	-	-	-	-

EU Temp assumptions

- Number of applications recorded not temporary registrations
 - Temporary registrations may be for 1 day to a year
 - There is no automatic "renewal" process
- Those seeking to stay over a year are required to apply for registration under the International route

Appendices

List of acronyms

AS	Arts therapists
BS	Biomedical scientists
CH	Chiropodists and podiatrists
CS	Clinical scientists
DH	Dept of Health
DT	Dietitian
HAD	Hearing aid dispensers
HMTCM	Herbal Medicine and Traditional Chinese Medicine practitioners
OT	Occupational therapists
ODP	Operating department practitioners
OR	Orthoptists
PA	Paramedics
PH	Physiotherapists
PHS	Public Health Specialists
PO	Prosthetists and orthotists
PYL	Psychologists
RA	Radiographers
SL	Speech and language therapists
SW	Social Workers in England
BPS	British Psychological Society
HESA	Higher Education Statistics Authority
CFWI	Council for Workforce Intelligence

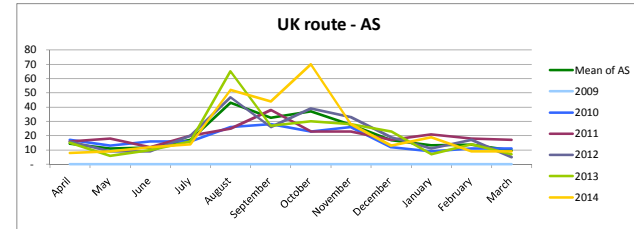
UK Application cycle

Month name	April	May	June	July	August	September	October	November	December	January	February	March
Month number	4	5	6	7	8	9	10	11	12	1	2	3

UK route application & registration monthly phasing - 1

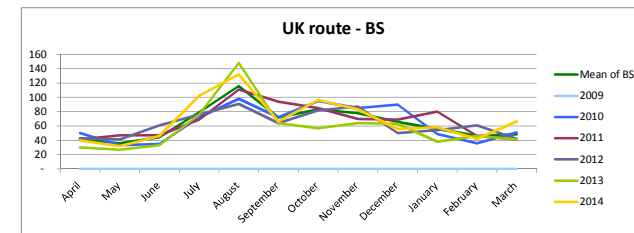
AS

Financial year ending	April	May	June	July	August	September	October	November	December	January	February	March
2009	-	-	-	-	-	-	-	-	-	-	-	-
2010	17	13	16	16	26	28	23	26	12	9	11	11
2011	16	18	12	20	25	38	23	23	17	21	18	17
2012	16	9	9	20	47	26	39	33	19	11	17	5
2013	15	6	10	16	65	27	30	28	23	7	14	7
2014	8	9	12	14	52	44	70	28	13	19	9	9
Mean of AS	14	11	12	17	43	33	37	28	17	13	14	10
Monthly weighting AS	0.0580	0.0443	0.0475	0.0692	0.1731	0.1312	0.1490	0.1111	0.0676	0.0539	0.0556	0.0395



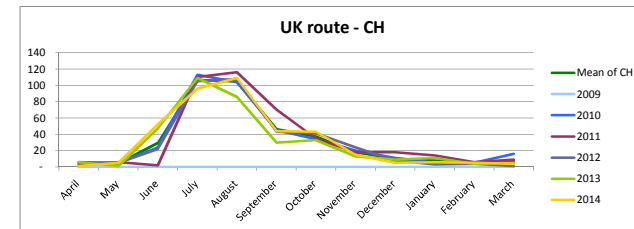
BS

Financial year ending	April	May	June	July	August	September	October	November	December	January	February	March
2009	-	-	-	-	-	-	-	-	-	-	-	-
2010	50	33	35	72	98	72	95	85	90	49	36	51
2011	41	47	47	69	111	94	85	70	69	80	46	41
2012	43	41	61	76	91	64	82	87	50	54	61	42
2013	30	27	33	76	148	64	57	64	63	38	46	41
2014	40	32	46	102	132	66	96	83	56	58	42	66
Mean of BS	41	36	44	79	116	72	83	78	66	56	46	48
Monthly weighting BS	0.0533	0.0471	0.0581	0.1033	0.1517	0.0941	0.1085	0.1017	0.0858	0.0730	0.0604	0.0630



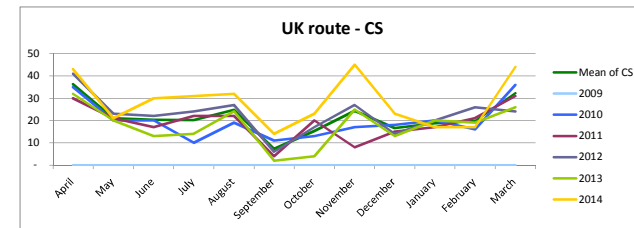
CH

Financial year ending	April	May	June	July	August	September	October	November	December	January	February	March
2009	-	-	-	-	-	-	-	-	-	-	-	-
2010	6	5	24	113	104	45	34	20	11	5	5	16
2011	2	6	2	110	116	70	35	18	18	14	6	9
2012	5	5	22	105	108	43	41	24	8	3	4	1
2013	6	1	47	109	86	30	33	13	9	11	4	5
2014	1	5	52	96	109	44	43	15	5	6	5	4
Mean of CH	4	4	29	107	105	46	37	18	10	8	5	7
Monthly weighting CH	0.0105	0.0116	0.0773	0.2802	0.2750	0.1220	0.0978	0.0473	0.0268	0.0205	0.0126	0.0184



CS

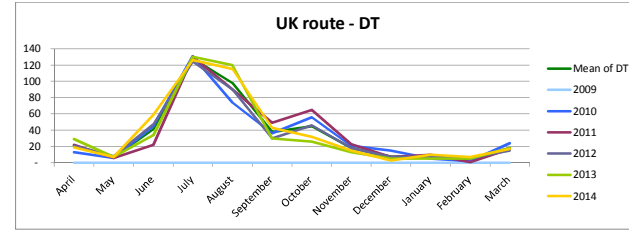
Financial year ending	April	May	June	July	August	September	October	November	December	January	February	March
2009	-	-	-	-	-	-	-	-	-	-	-	-
2010	35	20	20	10	19	11	13	17	18	20	16	36
2011	30	21	17	22	22	4	20	8	15	17	21	31
2012	41	23	22	24	27	6	17	27	14	20	26	24
2013	32	20	13	14	24	2	4	25	13	20	19	26
2014	43	21	30	31	32	14	23	45	23	17	17	44
Mean of CS	36	21	20	20	25	7	15	24	17	19	20	32
Monthly weighting CS	0.1407	0.0816	0.0793	0.0785	0.0964	0.0288	0.0599	0.0949	0.0645	0.0731	0.0770	0.1252



UK route application & registration monthly phasing - 2

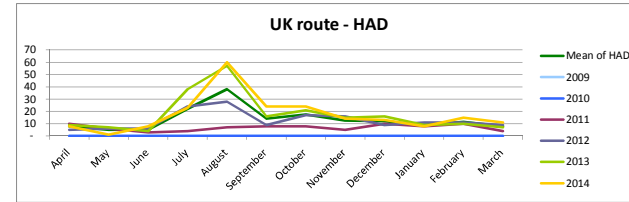
DT

Financial year ending	April	May	June	July	August	September	October	November	December	January	February	March
2009	-	-	-	-	-	-	-	-	-	-	-	-
2010	13	6	45	131	74	36	56	21	15	5	2	24
2011	22	6	22	130	90	49	65	23	7	10	1	17
2012	21	8	47	124	90	30	46	18	7	8	6	15
2013	29	7	34	130	120	30	26	13	5	5	5	18
2014	19	7	59	126	115	43	32	15	3	10	7	17
Mean of DT	21	7	41	128	98	38	45	18	7	8	4	18
Monthly weighting DT	0.0480	0.0157	0.0956	0.2961	0.2259	0.0868	0.1039	0.0416	0.0171	0.0176	0.0097	0.0420



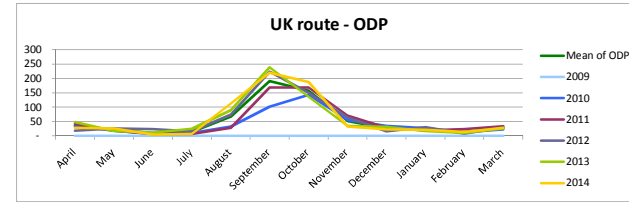
HAD

Month phasing 2	April	May	June	July	August	September	October	November	December	January	February	March
2009	-	-	-	-	-	-	-	-	-	-	-	-
2010	10	6	3	4	7	8	8	5	10	8	10	4
2011	5	6	6	24	28	9	17	16	9	11	11	9
2012	9	7	4	38	57	16	21	15	16	9	10	7
2013	8	1	8	23	60	24	24	14	13	8	15	11
Mean of HAD	8	5	5	22	38	14	18	13	12	9	12	8
Monthly weighting HAD	0.0491	0.0307	0.0322	0.1365	0.2331	0.0874	0.1074	0.0767	0.0736	0.0552	0.0706	0.0475



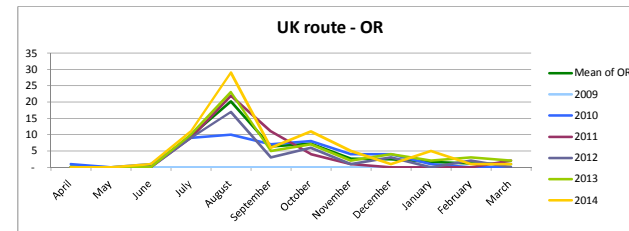
ODP

Month phasing 2	April	May	June	July	August	September	October	November	December	January	February	March
2009	-	-	-	-	-	-	-	-	-	-	-	-
2010	35	18	7	10	32	102	143	55	35	27	12	22
2011	41	18	6	7	28	169	169	70	28	19	23	33
2012	18	25	23	16	74	223	150	63	15	30	8	29
2013	48	17	11	24	89	239	136	35	31	17	10	26
2014	28	25	4	7	113	220	188	32	22	21	13	28
Mean of ODP	34	21	10	13	67	191	157	51	26	23	13	28
Monthly weighting ODP	0.0537	0.0325	0.0161	0.0202	0.1061	0.3009	0.2482	0.0805	0.0414	0.0360	0.0208	0.0436



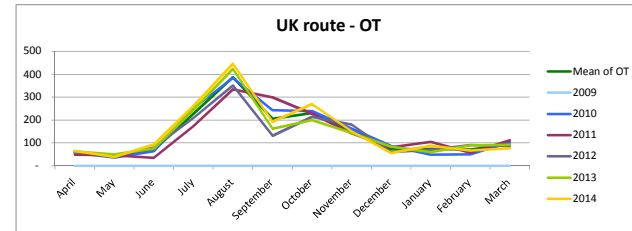
OR

Month phasing 2	April	May	June	July	August	September	October	November	December	January	February	March
2009	-	-	-	-	-	-	-	-	-	-	-	-
2010	1	-	1	9	10	7	8	4	4	1	-	-
2011	-	-	-	9	22	11	4	1	-	-	-	2
2012	-	-	-	9	17	3	6	1	3	-	2	-
2013	-	-	-	10	23	5	7	2	4	2	3	2
2014	-	-	1	11	29	6	11	5	1	5	1	1
Mean of OR	0	-	0	10	20	6	7	3	2	2	1	1
Monthly weighting OR	0.0038	-	0.0076	0.1818	0.3826	0.1212	0.1364	0.0492	0.0455	0.0303	0.0227	0.0189

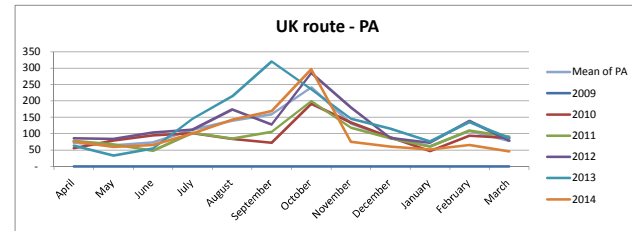


UK route application & registration monthly phasing - 3

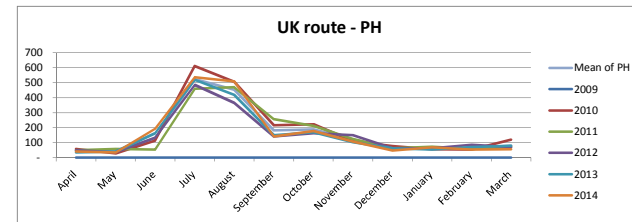
OT													
Month phasing 3	April	May	June	July	August	September	October	November	December	January	February	March	
2009	-	-	-	-	-	-	-	-	-	-	-	-	-
2010	57	36	64	251	384	243	239	162	86	49	50	103	
2011	49	46	35	173	334	299	228	142	81	104	57	112	
2012	61	41	80	209	350	131	214	180	60	70	91	86	
2013	63	50	75	244	423	162	199	144	83	60	89	92	
2014	66	39	94	261	445	192	269	150	55	88	67	76	
Mean of OT	59	42	70	228	387	205	230	156	73	74	71	94	
Monthly weighting OT	0.0351	0.0251	0.0412	0.1348	0.2293	0.1216	0.1361	0.0921	0.0432	0.0439	0.0419	0.0555	



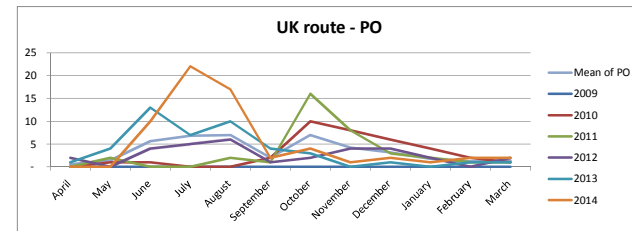
PA													
Month phasing 3	April	May	June	July	August	September	October	November	December	January	February	March	
2009	-	-	-	-	-	-	-	-	-	-	-	-	-
2010	55	79	95	101	84	72	191	134	89	47	94	87	
2011	78	67	48	102	85	105	199	118	86	60	109	91	
2012	86	84	103	112	174	128	285	180	87	72	139	79	
2013	63	33	54	145	214	321	235	145	115	76	136	87	
2014	76	59	65	100	143	169	297	75	60	52	65	46	
Mean of PA	72	64	73	112	140	159	241	130	87	61	109	78	
Monthly weighting PA	0.0539	0.0485	0.0550	0.0844	0.1055	0.1198	0.1819	0.0983	0.0659	0.0463	0.0818	0.0588	



PH													
Month phasing 3	April	May	June	July	August	September	October	November	December	January	February	March	
2009	-	-	-	-	-	-	-	-	-	-	-	-	-
2010	59	28	113	611	505	216	222	110	77	57	54	119	
2011	49	58	53	459	470	257	211	125	62	73	58	72	
2012	49	36	132	484	365	142	163	150	62	62	87	71	
2013	35	41	162	518	419	149	168	103	62	55	70	80	
2014	42	35	192	536	508	142	177	107	48	69	55	57	
Mean of PH	47	40	130	522	453	181	188	119	62	63	65	80	
Monthly weighting PH	0.0240	0.0203	0.0669	0.2675	0.2325	0.0929	0.0965	0.0610	0.0319	0.0324	0.0332	0.0409	



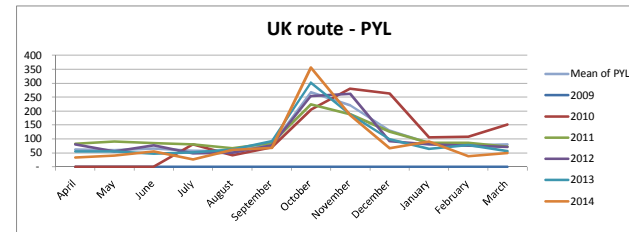
PO													
Month phasing 3	April	May	June	July	August	September	October	November	December	January	February	March	
2009	-	-	-	-	-	-	-	-	-	-	-	-	-
2010	-	1	1	-	-	2	10	8	6	4	2	1	
2011	-	2	-	-	2	1	16	8	3	2	1	1	
2012	2	-	4	5	6	1	2	4	4	2	-	2	
2013	1	4	13	7	10	4	3	-	1	-	1	1	
2014	-	-	10	22	17	2	4	1	2	1	2	2	
Mean of PO	1	1	6	7	7	2	7	4	3	2	1	1	
Monthly weighting PO	0.0142	0.0332	0.1327	0.1611	0.1659	0.0474	0.1659	0.0995	0.0758	0.0427	0.0284	0.0332	



UK route application & registration monthly phasing - 4

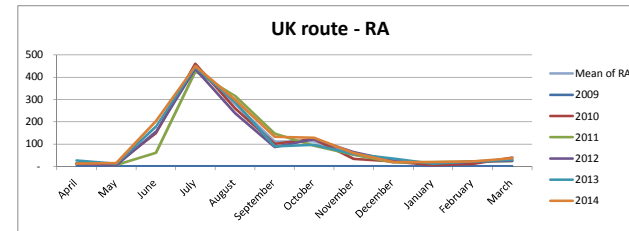
PYL

Month phasing 4	April	May	June	July	August	September	October	November	December	January	February	March
2009	-	-	-	-	-	-	-	-	-	-	-	-
2010	-	-	-	-	80	42	70	204	280	263	106	108
2011	83	91	85	80	67	85	224	188	126	86	86	73
2012	80	55	77	49	51	77	254	262	92	80	76	71
2013	55	55	47	52	62	92	302	188	99	64	78	56
2014	33	40	55	27	61	68	356	185	67	91	38	50
Mean of PYL	63	60	66	58	57	78	268	221	129	85	77	80
Monthly weighting PYL	0.0505	0.0485	0.0531	0.0464	0.0455	0.0631	0.2157	0.1775	0.1041	0.0687	0.0621	0.0647



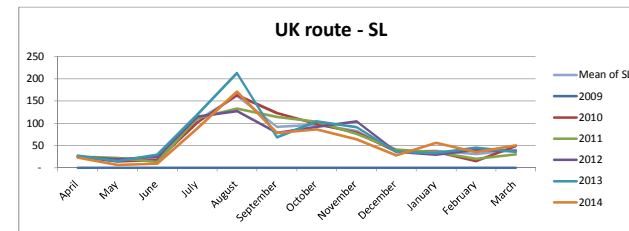
RA

Month phasing 4	April	May	June	July	August	September	October	November	December	January	February	March
2009	-	-	-	-	-	-	-	-	-	-	-	-
2010	13	10	148	460	261	101	123	33	21	4	10	39
2011	13	6	60	426	317	147	92	52	17	19	21	23
2012	10	5	156	437	239	86	122	64	24	14	20	24
2013	26	11	179	446	289	89	96	55	35	12	21	29
2014	12	14	203	450	299	133	128	59	19	19	21	36
Mean of RA	15	9	149	444	281	111	112	53	23	14	19	30
Monthly weighting RA	0.0117	0.0073	0.1185	0.3523	0.2231	0.0883	0.0891	0.0418	0.0184	0.0108	0.0148	0.0240



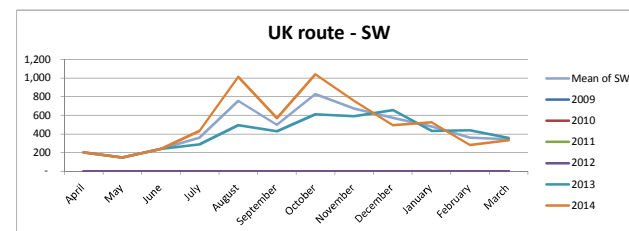
SL

Month phasing 4	April	May	June	July	August	September	October	November	December	January	February	March
2009	-	-	-	-	-	-	-	-	-	-	-	-
2010	25	14	17	101	163	123	98	79	37	36	15	49
2011	25	22	13	111	133	114	103	76	41	35	20	30
2012	24	19	24	115	127	78	92	104	36	29	40	37
2013	27	15	29	119	213	68	104	91	36	33	45	36
2014	23	6	9	88	171	78	86	64	28	56	35	50
Mean of SL	25	15	18	107	161	92	97	83	36	38	31	40
Monthly weighting SL	0.0334	0.0205	0.0248	0.1437	0.2172	0.1241	0.1300	0.1114	0.0479	0.0509	0.0417	0.0544



SW

Month phasing 4	April	May	June	July	August	September	October	November	December	January	February	March
2009	-	-	-	-	-	-	-	-	-	-	-	-
2010	-	-	-	-	-	-	-	-	-	-	-	-
2011	-	-	-	-	-	-	-	-	-	-	-	-
2012	-	-	-	-	-	-	-	-	-	-	-	-
2013	201	147	241	289	494	429	613	591	656	433	441	357
2014	201	146	240	434	1,015	570	1,042	757	494	527	281	333
Mean of SW	201	147	241	362	755	500	828	674	575	480	361	345
Monthly weighting SW	0.0368	0.0268	0.0440	0.0661	0.1380	0.0914	0.1514	0.1233	0.1052	0.0878	0.0660	0.0631



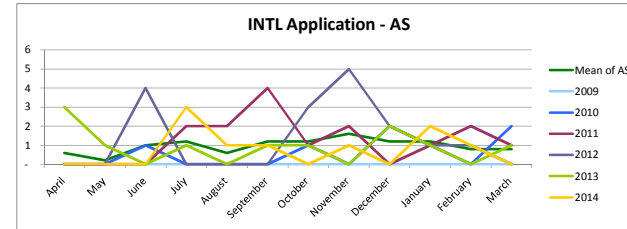
INTL Application cycle

Month name	April	May	June	July	August	September	October	November	December	January	February	March
Month number	4	5	6	7	8	9	10	11	12	1	2	3

International route application phasing (scrutiny fees) - 1

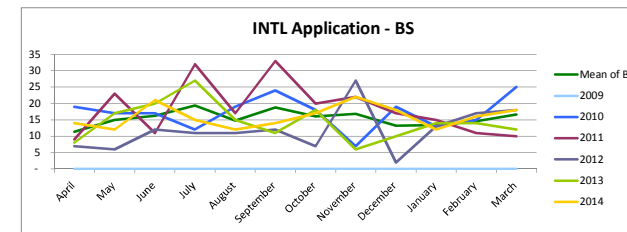
AS

Financial year ending	April	May	June	July	August	September	October	November	December	January	February	March
2009	-	-	-	-	-	-	-	-	-	-	-	-
2010	-	-	1	-	-	-	1	-	2	-	-	2
2011	-	-	-	2	2	4	1	-	2	-	1	1
2012	-	-	4	-	-	-	3	5	2	1	1	-
2013	3	1	-	1	-	1	1	-	2	1	-	1
2014	-	-	-	3	1	1	-	1	-	2	1	-
Mean of AS	1	0	1	1	1	1	1	2	1	1	1	1
Monthly weighting AS	0.0517	0.0172	0.0862	0.1034	0.0517	0.1034	0.1034	0.1379	0.1034	0.1034	0.0690	0.0690



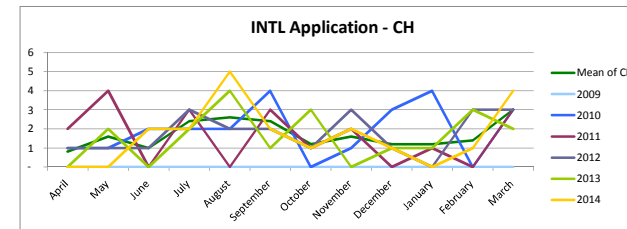
BS

Financial year ending	April	May	June	July	August	September	October	November	December	January	February	March
2009	-	-	-	-	-	-	-	-	-	-	-	-
2010	19	17	17	12	19	24	18	7	19	13	15	25
2011	9	23	11	32	17	33	20	22	17	15	11	10
2012	7	6	12	11	11	12	7	27	2	13	17	18
2013	8	17	20	27	15	11	18	6	10	14	14	12
2014	14	12	21	15	12	14	17	22	18	12	16	18
Mean of BS	11	15	16	19	15	19	16	17	13	13	15	17
Monthly weighting BS	0.0612	0.0806	0.0870	0.1042	0.0795	0.1010	0.0859	0.0902	0.0709	0.0720	0.0784	0.0892



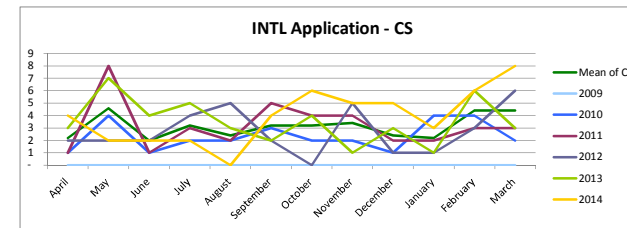
CH

Financial year ending	April	May	June	July	August	September	October	November	December	January	February	March
2009	-	-	-	-	-	-	-	-	-	-	-	-
2010	1	1	2	2	2	4	-	1	3	4	-	3
2011	2	4	-	3	-	3	1	2	-	1	-	3
2012	1	1	1	3	2	2	1	3	1	-	3	3
2013	-	2	-	2	4	1	3	-	1	1	3	2
2014	-	-	2	2	5	2	1	2	1	-	1	4
Mean of CH	1	2	1	2	3	2	1	2	1	1	1	3
Monthly weighting CH	0.0392	0.0784	0.0490	0.1176	0.1275	0.1176	0.0588	0.0784	0.0588	0.0588	0.0686	0.1471



CS

Financial year ending	April	May	June	July	August	September	October	November	December	January	February	March
2009	-	-	-	-	-	-	-	-	-	-	-	-
2010	1	4	1	2	2	3	2	2	1	4	4	2
2011	1	8	1	3	2	5	4	4	2	2	3	3
2012	2	2	2	4	5	2	-	5	1	1	3	6
2013	3	7	4	5	3	2	4	1	3	1	6	3
2014	4	2	2	2	-	4	6	5	5	3	6	8
Mean of CS	2	5	2	3	2	3	3	3	2	2	4	4
Monthly weighting CS	0.0585	0.1223	0.0532	0.0851	0.0638	0.0851	0.0851	0.0904	0.0638	0.0585	0.1170	0.1170



International route application phasing (scrutiny fees) - 2

DT

Financial year ending	April	May	June	July	August	September	October	November	December	January	February	March
2009	-	-	-	-	-	-	-	-	-	-	-	-
2010	13	13	12	7	6	6	3	7	8	8	4	9
2011	8	15	4	13	5	13	13	10	5	12	6	8
2012	2	8	11	8	6	7	7	19	5	2	15	20
2013	14	17	9	8	15	6	11	3	10	4	3	5
2014	13	8	9	13	8	8	8	9	6	14	15	11
Mean of DT	10	12	9	10	8	8	8	10	7	8	9	11
Monthly weighting DT	0.0917	0.1119	0.0826	0.0899	0.0734	0.0734	0.0771	0.0881	0.0624	0.0734	0.0789	0.0972

HAD

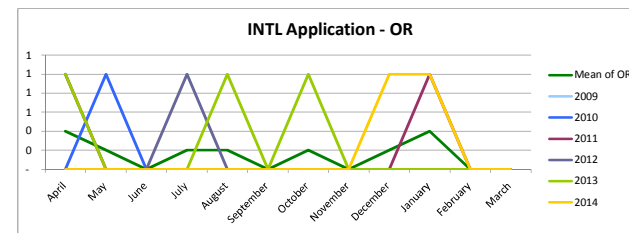
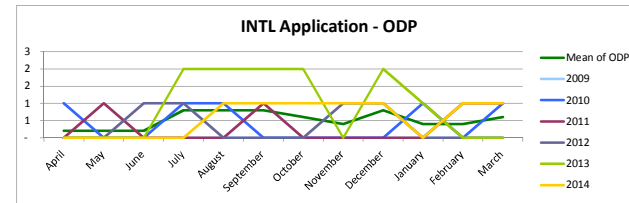
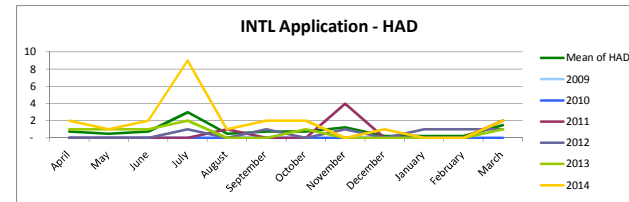
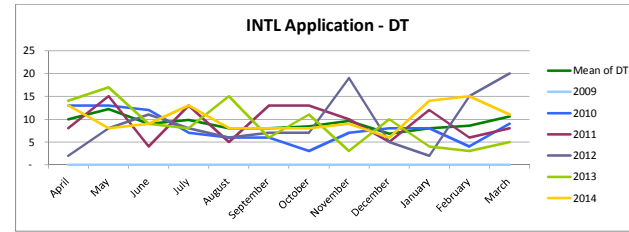
Month phasing 2	April	May	June	July	August	September	October	November	December	January	February	March
2009	-	-	-	-	-	-	-	-	-	-	-	-
2010	-	-	-	-	-	-	-	-	-	-	-	-
2011	-	-	-	-	1	-	-	4	-	-	-	2
2012	-	-	-	1	-	1	-	1	-	1	1	1
2013	1	1	1	2	-	-	1	-	-	-	-	1
2014	2	1	2	9	1	2	2	-	1	-	-	2
Mean of HAD	1	1	1	3	1	1	1	1	0	0	0	2
Monthly weighting HAD	0.0714	0.0476	0.0714	0.2857	0.0476	0.0714	0.0714	0.1190	0.0238	0.0238	0.0238	0.1429

ODP

Month phasing 2	April	May	June	July	August	September	October	November	December	January	February	March
2009	-	-	-	-	-	-	-	-	-	-	-	-
2010	1	-	-	1	1	-	-	-	-	1	-	1
2011	-	1	-	-	-	1	-	-	-	-	1	1
2012	-	-	1	1	-	-	-	1	1	-	-	-
2013	-	-	-	2	2	2	2	-	2	1	-	1
2014	-	-	-	-	1	1	1	1	1	-	1	1
Mean of ODP	0	0	0	1	1	1	1	0	1	0	0	1
Monthly weighting ODP	0.0323	0.0323	0.0323	0.1290	0.1290	0.1290	0.0968	0.0645	0.1290	0.0645	0.0645	0.0968

OR

Month phasing 2	April	May	June	July	August	September	October	November	December	January	February	March
2009	-	-	-	-	-	-	-	-	-	-	-	-
2010	-	1	-	-	-	-	-	-	-	-	-	-
2011	1	-	-	-	-	-	-	-	-	1	-	-
2012	-	-	-	1	-	-	-	-	-	-	-	-
2013	1	-	-	-	1	-	1	-	-	-	-	-
2014	-	-	-	-	-	-	-	-	1	1	-	-
Mean of OR	0	0	-	0	0	-	0	-	0	0	-	-
Monthly weighting OR	0.2222	0.1111	-	0.1111	0.1111	-	0.1111	-	0.1111	0.2222	-	-



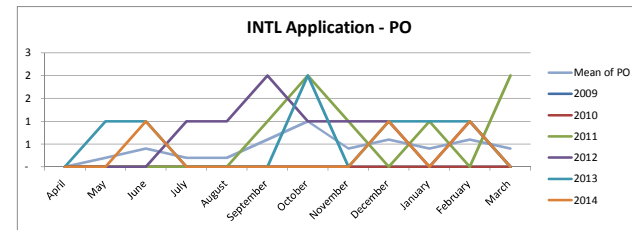
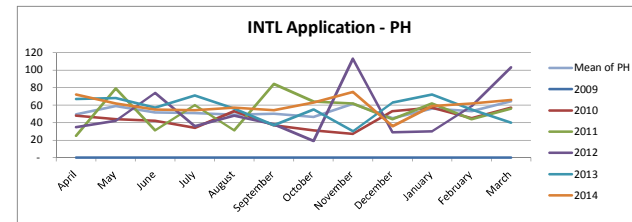
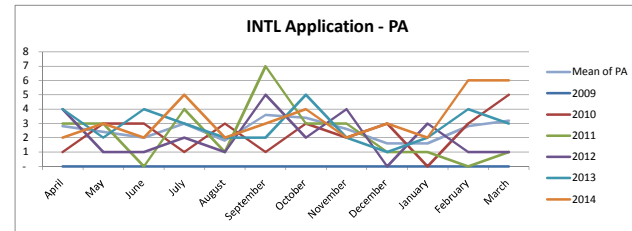
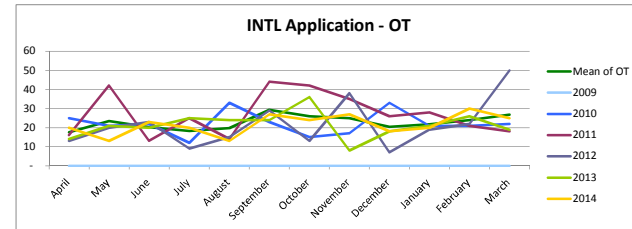
International route application phasing (scrutiny fees) - 3

OT													
Month phasing 3	April	May	June	July	August	September	October	November	December	January	February	March	
2009	-	-	-	-	-	-	-	-	-	-	-	-	-
2010	25	21	22	12	33	23	15	17	33	21	21	22	-
2011	16	42	13	25	14	44	42	35	26	28	21	18	-
2012	13	20	23	9	15	29	13	38	7	19	22	50	-
2013	14	21	20	25	24	24	36	8	18	21	26	19	-
2014	20	13	23	20	13	27	24	27	18	20	30	25	-
Mean of OT	18	23	20	18	20	29	26	25	20	22	24	27	-
Monthly weighting OT	0.0646	0.0858	0.0741	0.0668	0.0726	0.1079	0.0954	0.0917	0.0748	0.0800	0.0880	0.0983	-

PA													
Month phasing 3	April	May	June	July	August	September	October	November	December	January	February	March	
2009	-	-	-	-	-	-	-	-	-	-	-	-	-
2010	1	3	3	1	3	1	3	2	3	-	3	5	-
2011	3	3	-	4	1	7	3	3	1	1	-	1	-
2012	4	1	1	2	1	5	2	4	-	3	1	1	-
2013	4	2	4	3	2	2	5	2	1	2	4	3	-
2014	2	3	2	5	2	3	4	2	3	2	6	6	-
Mean of PA	3	2	2	3	2	4	3	3	2	2	3	3	-
Monthly weighting PA	0.0909	0.0779	0.0649	0.0974	0.0584	0.1169	0.1104	0.0844	0.0519	0.0519	0.0909	0.1039	-

PH													
Month phasing 3	April	May	June	July	August	September	October	November	December	January	February	March	
2009	-	-	-	-	-	-	-	-	-	-	-	-	-
2010	48	44	42	34	53	37	31	27	53	57	45	57	-
2011	25	79	31	60	31	84	64	62	44	62	44	56	-
2012	35	42	74	36	48	38	19	113	29	30	59	103	-
2013	67	68	57	71	56	37	55	30	63	72	55	40	-
2014	72	62	55	54	57	54	63	75	36	59	62	66	-
Mean of PH	49	59	52	51	49	50	46	61	45	56	53	64	-
Monthly weighting PH	0.0776	0.0927	0.0814	0.0801	0.0770	0.0786	0.0729	0.0965	0.0707	0.0880	0.0833	0.1012	-

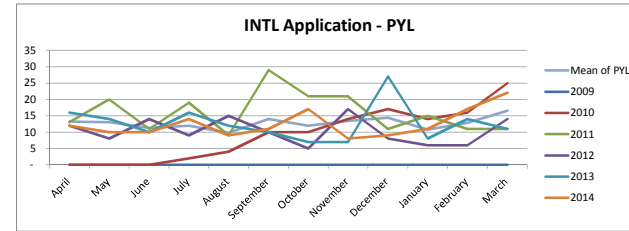
PO													
Month phasing 3	April	May	June	July	August	September	October	November	December	January	February	March	
2009	-	-	-	-	-	-	-	-	-	-	-	-	-
2010	-	-	-	-	-	-	-	-	-	-	-	-	-
2011	-	-	-	-	-	1	2	1	-	1	-	2	-
2012	-	-	-	1	1	2	1	1	1	-	1	-	-
2013	-	1	1	-	-	-	2	-	1	1	1	-	-
2014	-	-	1	-	-	-	-	-	1	-	1	-	-
Mean of PO	-	0	0	0	0	1	1	0	1	0	1	0	-
Monthly weighting PO	-	0.0400	0.0800	0.0400	0.0400	0.1200	0.2000	0.0800	0.1200	0.0800	0.1200	0.0800	-



International route application phasing (scrutiny fees) - 4

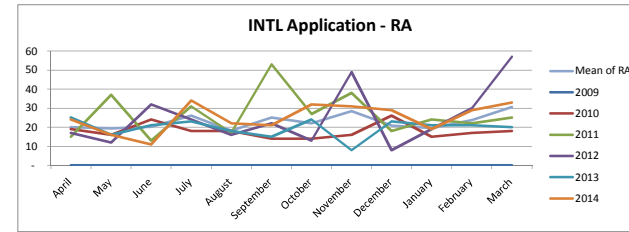
PYL

Month phasing 4	April	May	June	July	August	September	October	November	December	January	February	March
2009	-	-	-	-	-	-	-	-	-	-	-	-
2010	-	-	-	-	2	4	10	10	14	17	14	25
2011	13	20	11	19	9	29	21	21	11	15	11	11
2012	12	8	14	9	15	10	5	17	8	6	6	14
2013	16	14	10	16	12	10	7	7	27	8	14	11
2014	12	10	10	14	9	11	17	8	9	11	17	22
Mean of PYL	13	13	11	12	10	14	12	13	14	11	13	17
Monthly weighting PYL	0.0864	0.0848	0.0734	0.0783	0.0639	0.0913	0.0783	0.0874	0.0939	0.0705	0.0835	0.1083



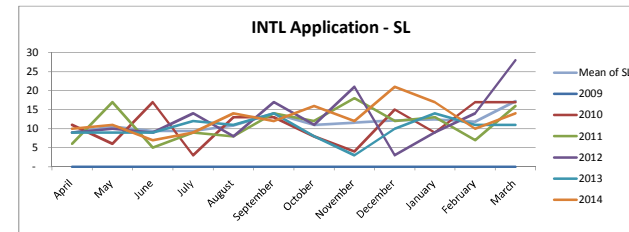
RA

Month phasing 4	April	May	June	July	August	September	October	November	December	January	February	March
2009	-	-	-	-	-	-	-	-	-	-	-	-
2010	19	16	24	18	18	14	14	16	26	15	17	18
2011	15	37	13	31	17	53	27	38	18	24	22	25
2012	17	12	32	24	16	22	13	49	8	19	30	57
2013	25	16	21	23	18	15	24	8	23	21	21	20
2014	24	16	11	34	22	21	32	31	29	19	29	33
Mean of RA	20	19	20	26	18	25	22	28	21	20	24	31
Monthly weighting RA	0.0730	0.0708	0.0737	0.0949	0.0664	0.0912	0.0803	0.1036	0.0759	0.0715	0.0869	0.1117



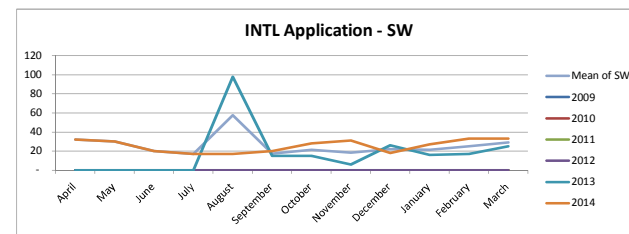
SL

Month phasing 4	April	May	June	July	August	September	October	November	December	January	February	March
2009	-	-	-	-	-	-	-	-	-	-	-	-
2010	11	6	17	3	13	13	8	4	15	9	17	17
2011	6	17	5	9	8	14	12	18	12	13	7	16
2012	9	10	9	14	8	17	11	21	3	9	14	28
2013	9	9	9	12	11	14	8	3	10	14	11	11
2014	10	11	7	9	14	12	16	12	21	17	10	14
Mean of SL	9	11	9	9	11	14	11	12	12	12	12	17
Monthly weighting SL	0.0646	0.0760	0.0674	0.0674	0.0775	0.1004	0.0789	0.0832	0.0875	0.0890	0.0846	0.1234



SW

Month phasing 4	April	May	June	July	August	September	October	November	December	January	February	March
2009	-	-	-	-	-	-	-	-	-	-	-	-
2010	-	-	-	-	-	-	-	-	-	-	-	-
2011	-	-	-	-	-	-	-	-	-	-	-	-
2012	-	-	-	-	-	-	-	-	-	-	-	-
2013	-	-	-	-	98	15	15	6	26	16	17	25
2014	32	30	20	17	17	20	28	31	18	27	33	33
Mean of SW	32	30	20	17	58	18	22	19	22	22	25	29
Monthly weighting SW	0.1027	0.0963	0.0642	0.0546	0.1846	0.0562	0.0690	0.0594	0.0706	0.0690	0.0803	0.0931



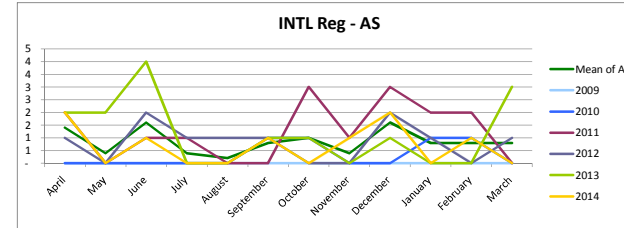
INTL Registration cycle

Month name	April	May	June	July	August	September	October	November	December	January	February	March
Month number	4	5	6	7	8	9	10	11	12	1	2	3

International route registration phasing - 1

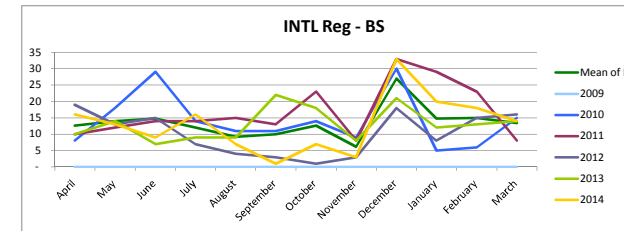
AS

Financial year ending	April	May	June	July	August	September	October	November	December	January	February	March
2009	-	-	-	-	-	-	-	-	-	-	-	-
2010	-	-	-	-	-	1	1	-	-	1	1	-
2011	2	-	1	1	-	-	3	1	3	2	2	-
2012	1	-	2	1	1	1	-	-	2	1	-	1
2013	2	2	4	-	-	1	1	-	1	-	-	3
2014	2	-	1	-	-	1	-	1	2	-	1	-
Mean of AS	1	0	2	0	0	1	1	0	2	1	1	1
Monthly weighting AS	0.1373	0.0392	0.1569	0.0392	0.0196	0.0784	0.0980	0.0392	0.1569	0.0784	0.0784	0.0784



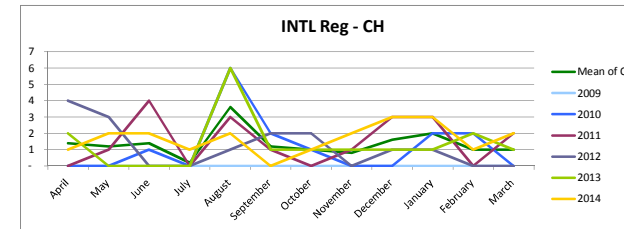
BS

Financial year ending	April	May	June	July	August	September	October	November	December	January	February	March
2009	-	-	-	-	-	-	-	-	-	-	-	-
2010	8	18	29	14	11	11	14	9	30	5	6	15
2011	10	12	14	14	15	13	23	8	33	29	23	8
2012	19	13	15	7	4	3	1	3	18	8	15	16
2013	10	14	7	9	9	22	18	8	21	12	13	14
2014	16	13	9	16	7	1	7	3	33	20	18	14
Mean of BS	13	14	15	12	9	10	13	6	27	15	15	13
Monthly weighting BS	0.0780	0.0866	0.0916	0.0743	0.0569	0.0619	0.0780	0.0384	0.1671	0.0916	0.0928	0.0829



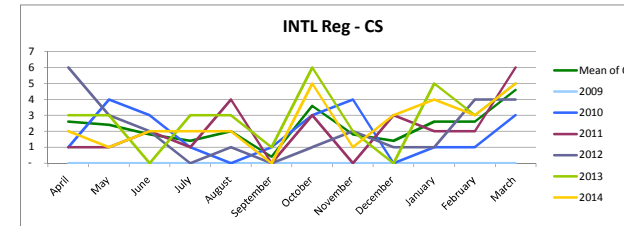
CH

Financial year ending	April	May	June	July	August	September	October	November	December	January	February	March
2009	-	-	-	-	-	-	-	-	-	-	-	-
2010	-	-	1	-	6	2	1	-	-	2	2	-
2011	-	1	4	-	3	1	-	1	3	3	-	2
2012	4	3	-	-	1	2	2	-	1	1	-	-
2013	2	-	-	-	6	1	1	1	1	1	2	1
2014	1	2	2	1	2	-	1	2	3	3	1	2
Mean of CH	1	1	1	0	4	1	1	1	2	2	1	1
Monthly weighting CH	0.0854	0.0732	0.0854	0.0122	0.2195	0.0732	0.0610	0.0488	0.0976	0.1220	0.0610	0.0610



CS

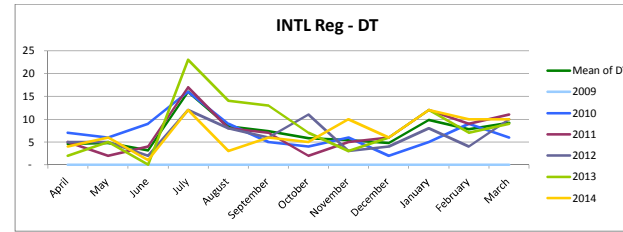
Financial year ending	April	May	June	July	August	September	October	November	December	January	February	March
2009	-	-	-	-	-	-	-	-	-	-	-	-
2010	1	4	3	1	-	1	3	4	-	1	1	3
2011	1	1	2	1	4	-	3	-	3	2	2	6
2012	6	3	2	-	1	-	1	2	1	1	4	4
2013	3	3	-	3	3	1	6	2	-	5	3	5
2014	2	1	2	2	2	-	5	1	3	4	3	5
Mean of CS	3	2	2	1	2	0	4	2	1	3	3	5
Monthly weighting CS	0.0956	0.0882	0.0662	0.0515	0.0735	0.0147	0.1324	0.0662	0.0515	0.0956	0.0956	0.1691



International route registration phasing - 2

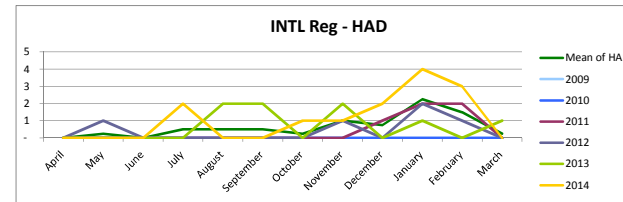
DT

Financial year ending	April	May	June	July	August	September	October	November	December	January	February	March
2009	-	-	-	-	-	-	-	-	-	-	-	-
2010	7	6	9	16	9	5	4	6	2	5	9	6
2011	5	2	4	17	8	7	2	5	6	12	9	11
2012	5	5	2	12	8	6	11	3	4	8	4	10
2013	2	5	-	23	14	13	7	3	6	12	7	9
2014	4	6	1	12	3	6	5	10	6	12	10	10
Mean of DT	5	5	3	16	8	7	6	5	5	10	8	9
Monthly weighting DT	0.0528	0.0550	0.0367	0.1835	0.0963	0.0849	0.0665	0.0619	0.0550	0.1124	0.0894	0.1055



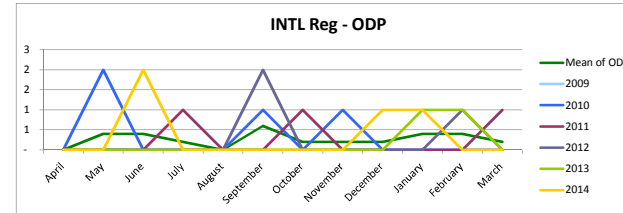
HAD

Month phasing 2	April	May	June	July	August	September	October	November	December	January	February	March
2009	-	-	-	-	-	-	-	-	-	-	-	-
2010	-	-	-	-	-	-	-	-	1	2	2	-
2011	-	1	-	-	-	-	-	1	-	2	1	-
2012	-	-	-	-	2	2	2	2	1	-	-	1
2013	-	-	-	2	-	-	1	1	2	4	3	-
2014	-	-	-	-	-	-	-	-	-	-	-	-
Mean of HAD	-	0	-	1	1	1	0	1	1	2	2	0
Monthly weighting	-	0.0323	-	0.0645	0.0645	0.0645	0.0323	0.1290	0.0968	0.2903	0.1935	0.0323



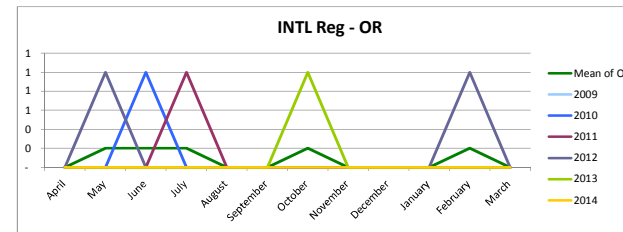
ODP

Month phasing 2	April	May	June	July	August	September	October	November	December	January	February	March
2009	-	-	-	-	-	-	-	-	-	-	-	-
2010	-	2	-	-	-	1	-	1	-	-	-	-
2011	-	-	-	1	-	-	1	-	-	-	-	1
2012	-	-	-	-	-	2	-	-	-	1	1	-
2013	-	-	-	-	-	-	-	-	1	1	-	-
2014	-	-	2	-	-	-	-	-	1	-	-	-
Mean of ODP	-	0	0	0	-	1	0	0	0	0	0	0
Monthly weighting ODP	-	0.1250	0.1250	0.0625	-	0.1875	0.0625	0.0625	0.0625	0.1250	0.1250	0.0625



OR

Month phasing 2	April	May	June	July	August	September	October	November	December	January	February	March
2009	-	-	-	-	-	-	-	-	-	-	-	-
2010	-	-	1	-	-	-	-	-	-	-	-	-
2011	-	-	-	1	-	-	-	-	-	-	-	-
2012	-	1	-	-	-	-	-	-	-	-	1	-
2013	-	-	-	-	-	-	1	-	-	-	-	-
2014	-	-	-	-	-	-	-	-	-	-	-	-
Mean of OR	-	0	0	0	-	-	0	-	-	-	0	-
Monthly weighting OR	-	0.2000	0.2000	0.2000	-	-	0.2000	-	-	-	0.2000	-



International route registration phasing - 3

OT

Month phasing 3	April	May	June	July	August	September	October	November	December	January	February	March
2009	-	-	-	-	-	-	-	-	-	-	-	-
2010	32	29	33	16	16	9	9	42	18	21	17	16
2011	18	17	16	25	25	17	7	38	21	46	28	31
2012	26	22	19	18	9	8	3	25	21	27	17	22
2013	22	29	10	29	14	29	9	38	13	18	22	19
2014	26	17	25	23	7	10	6	37	17	33	28	30
Mean of OT	25	23	21	22	14	15	7	36	18	29	22	24
Monthly weighting OT	0.0973	0.0894	0.0808	0.0871	0.0557	0.0573	0.0267	0.1412	0.0706	0.1137	0.0878	0.0925

PA

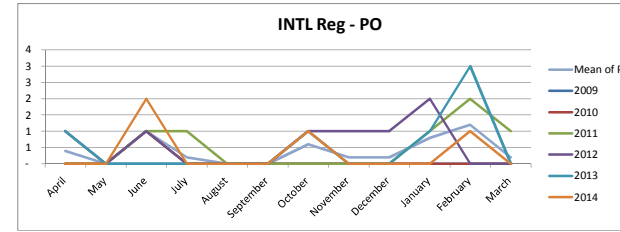
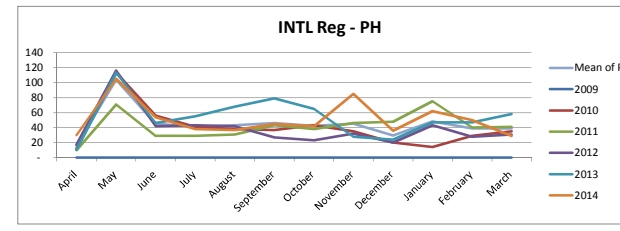
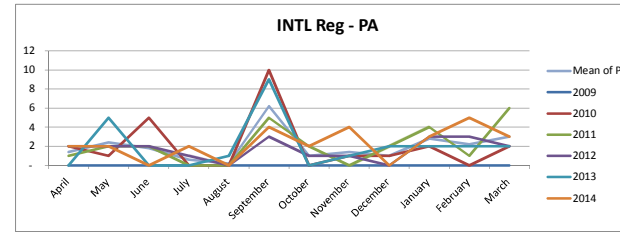
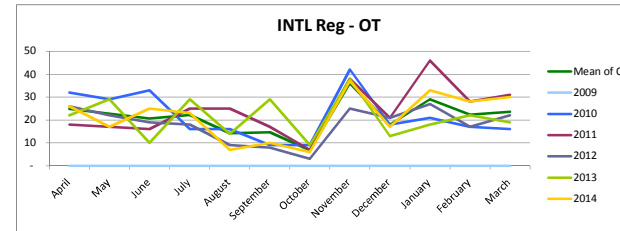
Month phasing 3	April	May	June	July	August	September	October	November	December	January	February	March
2009	-	-	-	-	-	-	-	-	-	-	-	-
2010	2	1	5	-	-	10	-	1	1	2	-	2
2011	1	2	2	-	-	5	2	-	2	4	1	6
2012	2	2	2	1	-	3	1	1	-	3	3	2
2013	-	5	-	-	1	9	-	1	2	2	2	2
2014	2	2	-	2	-	4	2	4	-	3	5	3
Mean of PA	1	2	2	1	0	6	1	1	1	3	2	3
Monthly weighting PA	0.0583	0.1000	0.0750	0.0250	0.0083	0.2583	0.0417	0.0583	0.0417	0.1167	0.0917	0.1250

PH

Month phasing 3	April	May	June	July	August	September	October	November	December	January	February	March
2009	-	-	-	-	-	-	-	-	-	-	-	-
2010	12	113	56	41	38	37	43	35	20	14	29	35
2011	10	71	29	29	31	43	38	46	48	75	40	41
2012	17	116	42	43	42	27	23	32	20	43	28	31
2013	11	113	46	55	68	79	65	28	24	47	47	58
2014	30	105	54	38	37	45	42	85	36	62	50	29
Mean of PH	16	104	45	41	43	46	42	45	30	48	39	39
Monthly weighting PH	0.0297	0.1924	0.0843	0.0765	0.0802	0.0858	0.0784	0.0840	0.0550	0.0895	0.0721	0.0721

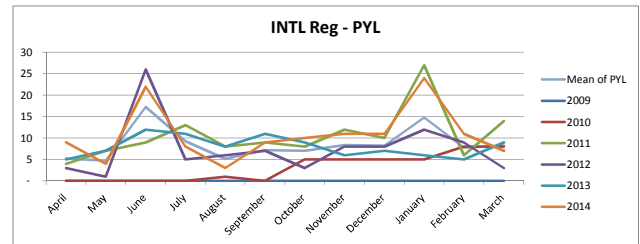
PO

Month phasing 3	April	May	June	July	August	September	October	November	December	January	February	March
2009	-	-	-	-	-	-	-	-	-	-	-	-
2010	-	-	1	-	-	-	-	-	-	-	-	-
2011	-	-	1	1	-	-	-	-	-	1	2	1
2012	1	-	1	-	-	-	1	1	1	2	-	-
2013	1	-	-	-	-	-	1	-	-	1	3	-
2014	-	-	2	-	-	-	1	-	-	-	1	-
Mean of PO	0	-	1	0	-	-	1	0	0	1	1	0
Monthly weighting PO	0.0833	-	0.2083	0.0417	-	-	0.1250	0.0417	0.0417	0.1667	0.2500	0.0417

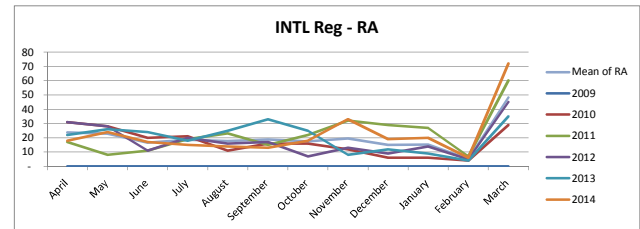


International route registration phasing - 4

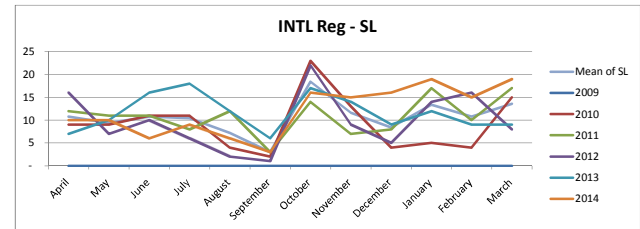
PYL													
Month phasing 4	April	May	June	July	August	September	October	November	December	January	February	March	
2009	-	-	-	-	-	-	-	-	-	-	-	-	-
2010	-	-	-	-	1	-	5	5	5	5	8	8	8
2011	4	7	9	13	8	9	8	12	10	27	6	14	14
2012	3	1	26	5	6	7	3	8	8	12	9	3	3
2013	5	7	12	11	8	11	9	6	7	6	5	9	9
2014	9	4	22	8	3	9	10	11	11	24	11	7	7
Mean of PYL	5	5	17	9	5	7	7	8	8	15	8	8	8
Monthly weighting PYL	0.0508	0.0460	0.1670	0.0895	0.0503	0.0697	0.0678	0.0813	0.0794	0.1433	0.0755	0.0794	



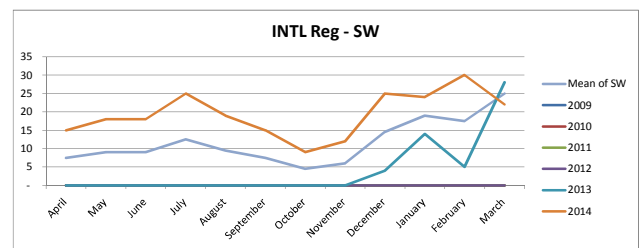
RA													
Month phasing 4	April	May	June	July	August	September	October	November	December	January	February	March	
2009	-	-	-	-	-	-	-	-	-	-	-	-	-
2010	31	28	20	21	11	16	16	12	6	6	4	29	29
2011	17	8	11	19	23	15	22	32	29	27	7	60	60
2012	31	28	11	20	16	17	7	13	9	14	5	45	45
2013	22	26	24	18	25	33	25	8	12	9	4	35	35
2014	18	24	17	15	14	13	18	33	19	20	6	72	72
Mean of RA	24	23	17	19	18	19	18	20	15	15	5	48	48
Monthly weighting RA	0.0995	0.0953	0.0694	0.0778	0.0744	0.0786	0.0736	0.0819	0.0627	0.0635	0.0217	0.2015	



SL													
Month phasing 4	April	May	June	July	August	September	October	November	December	January	February	March	
2009	-	-	-	-	-	-	-	-	-	-	-	-	-
2010	9	9	11	11	4	2	23	13	4	5	4	15	15
2011	12	11	11	8	12	3	14	7	8	17	10	17	17
2012	16	7	10	6	2	1	22	9	5	14	16	8	8
2013	7	10	16	18	12	6	17	14	9	12	9	9	9
2014	10	10	6	9	6	3	16	15	16	19	15	19	19
Mean of SL	11	9	11	10	7	3	18	12	8	13	11	14	14
Monthly weighting SL	0.0845	0.0736	0.0845	0.0814	0.0563	0.0235	0.1440	0.0908	0.0657	0.1049	0.0845	0.1064	



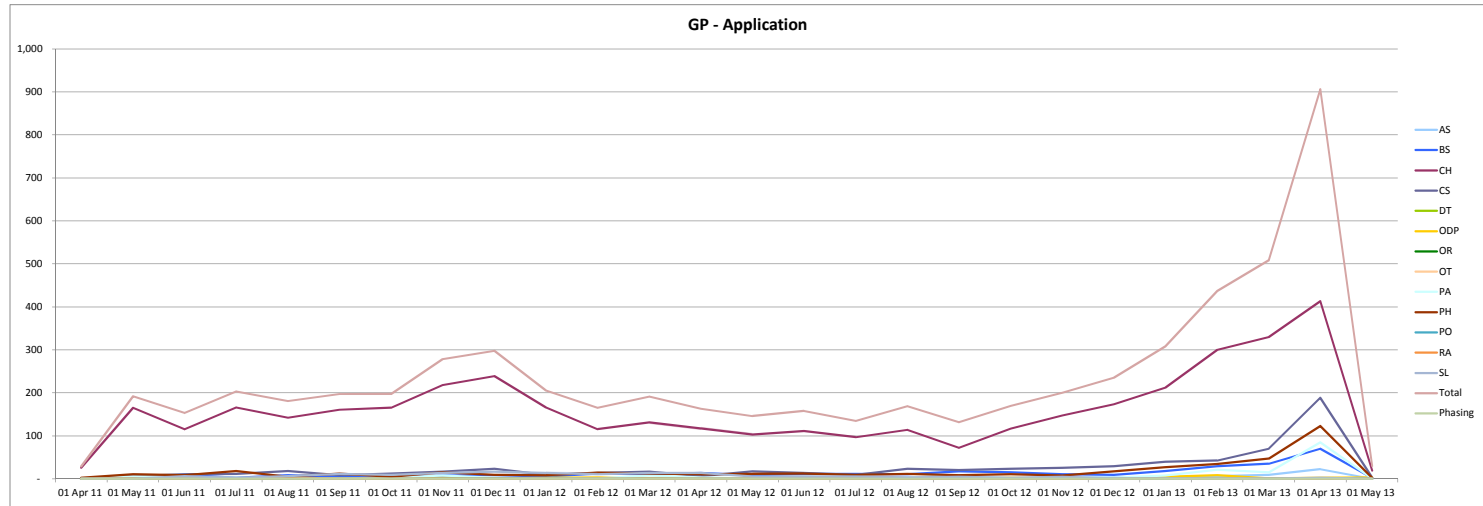
SW													
Month phasing 4	April	May	June	July	August	September	October	November	December	January	February	March	
2009	-	-	-	-	-	-	-	-	-	-	-	-	-
2010	-	-	-	-	-	-	-	-	-	-	-	-	-
2011	-	-	-	-	-	-	-	-	-	-	-	-	-
2012	-	-	-	-	-	-	-	-	-	-	-	-	-
2013	-	-	-	-	-	-	-	-	4	14	5	28	28
2014	15	18	18	25	19	15	9	12	25	24	30	22	22
Mean of SW	8	9	9	13	10	8	5	6	15	19	18	25	25
Monthly weighting SW	0.0530	0.0636	0.0636	0.0883	0.0671	0.0530	0.0318	0.0424	0.1025	0.1343	0.1237	0.1767	



GP Application cycle

GRANDPARENTING MODEL PHASING BASED ON TWO YEAR WINDOW

Month of GP cycle	Actuals	Actuals	Actuals	Actuals	Actuals	Actuals	Actuals	Actuals	Actuals	Actuals	Actuals	Actuals	Actuals	Actuals	Actuals	Actuals	Actuals	Actuals	Actuals	Actuals	Actuals	Actuals	Actuals	Forecast	Forecast	
	30 Apr 11	31 May 11	30 Jun 11	31 Jul 11	31 Aug 11	30 Sep 11	31 Oct 11	30 Nov 11	31 Dec 11	31 Jan 12	29 Feb 12	31 Mar 12	30 Apr 12	31 May 12	30 Jun 12	31 Jul 12	31 Aug 12	30 Sep 12	31 Oct 12	30 Nov 12	31 Dec 12	31 Jan 13	28 Feb 13	31 Mar 13	30 Apr 13	31 May 13
AS	-	-	1	-	1	-	1	2	-	3	-	1	1	1	4	2	3	1	1	3	3	1	6	9	22	-
BS	1	4	9	2	8	4	2	7	8	5	12	10	13	8	11	11	10	17	15	10	9	18	29	35	70	2
CH	26	165	115	166	142	161	165	218	239	166	115	131	117	103	111	97	114	72	117	147	173	212	300	330	413	19
CS	-	6	10	11	18	8	12	16	23	9	13	16	6	17	13	9	23	20	23	25	29	39	42	70	188	3
DT	-	-	-	-	-	-	2	-	-	-	-	-	-	-	-	-	-	-	-	-	-	1	-	-	-	-
ODP	1	3	1	1	-	-	2	2	1	2	3	1	-	-	2	1	-	1	2	1	-	4	8	1	2	3
OR	-	1	-	-	-	-	-	-	-	-	-	-	-	-	-	-	-	-	-	-	-	-	-	-	-	-
OT	-	-	-	-	-	-	-	-	-	-	-	1	-	-	-	1	-	-	-	-	1	-	1	-	1	-
PA	-	5	4	2	1	1	2	7	2	1	1	7	3	1	2	-	2	9	1	3	2	7	21	15	85	1
PH	2	10	8	18	4	12	4	15	9	8	14	12	10	11	12	9	11	8	10	7	17	27	34	47	123	2
PO	-	-	-	1	-	-	-	-	1	-	-	-	-	-	-	-	-	-	-	1	-	-	-	-	-	-
RA	-	1	-	1	-	-	-	-	-	-	-	-	-	-	-	-	-	-	-	-	-	1	-	-	-	-
SL	-	-	6	2	6	11	9	13	16	13	10	13	13	5	5	5	3	4	2	4	1	1	1	-	2	-
Total	29	192	153	203	181	197	197	278	298	205	165	191	163	146	158	135	169	132	170	200	235	308	437	508	906	30
Phasing	0.0048	0.0321	0.0256	0.0339	0.0302	0.0329	0.0329	0.0464	0.0498	0.0342	0.0276	0.0319	0.0272	0.0244	0.0264	0.0226	0.0282	0.0221	0.0284	0.0334	0.0393	0.0515	0.0730	0.0849	0.1514	0.0050



* Assume GP periods will be two years only, but no current start dates

Professional renewal periods

Years	2007/09/11/13/15/17/19												2008/10/12/14/16/18/20											
Months	Jan	Feb	Mar	Apr	May	Jun	Jul	Aug	Sep	Oct	Nov	Dec	Jan	Feb	Mar	Apr	May	Jun	Jul	Aug	Sep	Oct	Nov	Dec
			PYL			OR/PA		BS		RA		AS								ODP				
						PO/SLT/CS								PH		CH/HAD								
						OT										DT								
																					SW			

