

Council, 13 May 2015

Fitness to Practise Report

Executive summary and recommendations

Introduction

The report provides an update on the main activities of the Fitness to Practise Department. The report includes statistical information relating to case management and adjudication activity in March 2015 as well as length of time analysis.

Decision

The Council is requested to discuss the report.

Background information

There is no additional background information.

Resource implications

The resources for the Department are set out in the annual workplan and budget 2015-16.

Financial implications

As above.

Appendices

None.

Date of paper

27 April 2015

Fitness to Practise Directorate – Executive Summary

The following provides an update about the work of the Fitness to Practise Directorate in March 2015 and a comparison with the end of year activity against the previous 12 months.

Case Information

1. The statistical information relating to the work of the Fitness to Practise Department can be found in the management information pack based on the nine month forecast, and the appendix providing the cumulative length of time data. The data included is for the complete budget year 2014-15. Key information is highlighted below.

Commentary on cases against forecast

2. **New cases:** We had 205 versus 186 forecast, which is 10% higher than expected. For the year, we had forecast 2131 new cases but actually received 2170 which is 2% above forecast. We saw a peak in cases received in October and November, followed by a lower than forecast period in December and January. This will affect the volumes of cases being considered at Investigating Committee Panel (ICP) in April and May, and in July and August 2015. We are reviewing our resources to manage this.
3. The majority of new cases continues to relate to Social Workers. We received 1251 social work cases, against 2170 from all professions combined, accounting for 58% of the total. This has been broadly consistent throughout the year, and is an increase of 6% (from 52%) of the total from those received in 2013-14.
4. In March, 45% of newly received cases came from members of the public. This remains the consistent route of complaints across the year to date, where 46% of allegations came from members of the public. This remains higher than last year (38%). We are working on ways of streaming these cases, as we know that a significant proportion of them do not meet our standard of acceptance, and are therefore closed early in the process, but that they also require more efforts than other complaint routes to collate the information to make this decision. The revised standard of acceptance is due to be presented to Council in May. The revised standard of acceptance, coupled with targeted work to improve the referral process from members of the public planned in mid-2015, will continue to ensure that cases are managed and progressed appropriately.
5. In March, we closed 127 cases pre-ICP. This was the largest number in the last two years, but also contained the largest number of complaints that came from members of the public. In the year 2014-15, we closed 1042 cases pre-ICP which is broadly in line with the 1063 cases forecast.

6. The second highest rate of complaints remains consistent with earlier analysis from employers at 26%, which is up from 20% the previous month, and 28% for the year to date. The number of self-referrals remains the same at 16% year to date. Both employer and self-referral complaints have a higher conversion rate to case to answer and final hearings than those that come from the public. We are continuing to monitor the impact of the Employer Guidance and Meet the HCPC Employer Events that have been revised in the last three months.
7. **Professions:** Year to date, there is no change with 58% of new complaints received relating to social workers. The next highest rate is for paramedics (remaining stable at 10%). Practitioner psychologists remain the third highest complained about registrants, at 7% of new cases received in 2014-15 year to date. There is no change in the proportion of complaints about the professions in the last quarter.
8. **Ongoing cases:** We have 1441 ongoing pre ICP cases, versus 1373 forecast. The number of open cases is currently 5% higher than anticipated. Although the number of open cases will be affected by the above forecast number of new cases received in any month, we have seen a reduction in the number of open cases when compared to the position at the end of December 2014 when ongoing cases were 8% above forecast. We will continue to focus on this in the coming months.
9. The number of cases at pre-ICP stage is 272, versus 302 (10% below forecast); we are continuing to focus our obs and ICP planning resources to ensure that we have sufficient cases that can be put in front of a panel of the Investigating Committee.
10. Case progression conferences continue to be held on a monthly basis with a particular focus on the older cases which are still in the enquiry stage or do not have an ICP date fixed. The number of older cases being closed or progressed demonstrates that this effort is unlocking more complex or longer standing case.
11. Obs: 839 cases were obs'd this year. We were forecasting 879 cases. This annual figure represents 5% fewer obs than forecast, though this has reduced from 8% below forecast at the end of 2014.
12. **Cases considered at Investigating Committee:** 849 cases were considered at ICP last year, compared to 707 in 2013-14, an increase of 20%. 39 (5%) of these cases required further information as opposed to 25 (4%) in 2013-14. The case to answer rate this year was 53%; with no significant change from the previous year.
13. Interim Orders: In 2014-15, sixty seven of the seventy five new applications were granted. The granted rate of 89% is in line with previous years. Two hundred and fifty seven reviews were heard, with eight orders being revoked (under 3%). This rate is higher than the previous year where only one of one hundred and sixty six were revoked (0.6%).

Cases awaiting final hearing and hearings activity

14. There are 428 open cases, versus 450 forecast to be open at this time, and is therefore broadly on target (under 5% variance). We are continuing to push through older cases as a result of the length of time work. We have weekly teleconferences and monthly meetings with our external lawyers to ensure escalation of these cases is reviewed regularly.
15. Currently, 30% of these post ICP cases are under investigation by our external lawyers. A further 39% of the cases are with our scheduling team who are actively arranging hearings. The remaining 31% have a final hearing fixed for a date in the future. These proportions are within the expected range.
16. There were 48 preliminary hearings held in 2014-15, versus 12 in 2013-14. These have helped to advance complex or difficult cases with panel directions. We envisage this continuing through 2015-16. There were 421 hearings listed (against a forecast of 411). We forecast 353 would conclude, and this number did in fact conclude making the forecast exactly in line with the concluded. We can be confident that we are accurate in our predictions for hearing activity in 2015-16.

Length of time review

17. We have continued to repeat the length of time analysis presented to Council in July as part of the wider discussion of timeliness and conclusion of cases. The length of time appendix has detailed commentary; below are the key headlines for the cumulative period April 2014 to March 2015.
18. Year to date, we closed 1751 cases at either pre-ICP, ICP or final hearing stage. Of these, 1413 (81%) were closed within 18 months of receipt of the original complaint. This proportion has changed since we presented the analysis to Council in July 2014, where the proportion was 90%. The explanation of this is that we have been concentrating on concluding the oldest cases.
19. The mean and median closure times for this combined group remains at 9 and 7 months respectively. For cases closed at pre-ICP stage, the mean and median times remain at 6 and 5 months; for cases closed no case to answer at ICP 9 and 7 months; and for those closed at final hearing are 19 and 17 months.
20. An analysis of the open cases at each stage shows the current age of cases yet to conclude. Of the 1169 open Enquiry cases, the mean and median age from receipt remains constant at 5 and 4 months respectively.
21. Of the 272 open pre-ICP cases, the mean and median age from receipt is 10 and 8 months. This is in line with the final position last year. These cases took a mean and median of 5 and 4 months respectively to reach the Standard of Acceptance (SOA) stage, and a mean and median of 5 and 3 months from SOA being met to

their current position. The focus on the older cases has not affected these overall figures; the time from SOA to date has actually reduced by one month median.

22. Of the 428 current post ICP cases, the mean and median age from receipt remains constant at 17 and 16 months respectively. For these cases, the mean and median time taken to reach SOA were 4 and 3 months respectively. The cases then took a further 3 and 4 months (mean and median) respectively from SOA to ICP. The cases have taken a further 11 and 7 months (mean and median) months from ICP to date.
23. We continue to work with our external lawyers to ensure we identify any delays to these cases, and provide instruction to conclude the case effectively. We have been concentrating on driving cases to be ready to fix for final hearing to ensure that we meet our budget and activity levels for hearings, and that we use the allocated resources efficiently.

Non-FTP case activity

24. Registration Appeals: 78 new cases were received, against a forecast of 76 for 2014-15. There are 45 cases open, compared with 41 at the end of 2013-14. We continue to review the process for progression of these cases, but the numbers and proportions of cases have returned to the anticipate levels.
25. Protection of Title: The numbers received year to date continue to be lower than expected (326 versus 399). The number of open cases has peaked at 113, but this is mainly due to 63 new matters being received in the last month which is almost double the monthly forecast. However, 32 of the new cases relate to individuals included in one complaint made by an organisation. We continue to monitor and balance this activity with FTP caseloads. The defendant in the misuse of protected title case who was successfully convicted in January 2015 has lodged an appeal. The matter is likely to be listed for a re-hearing in May 2015.
26. Health and Character declarations: 856 cases were received in the last 12 months, against a plan of 977. The number of declarations received this year is 7% lower than the previous year. This case type experiences seasonal variations due to renewal cycles. We are looking at the resource requirements and phases through the year when planning next year's activity and budget plan. There are currently 35 open cases, which is lower than the 46 that were open at the end of the previous year.
27. Suitability scheme: 10 new cases were received in the last 12 months, compared with 14 in the previous 12 months. Six cases remain open, which is a reduction on the 13 at the end of the previous year. There are no concerns with this level of finite activity which will conclude in 2015-16 when the Social Worker education programmes have all been approved.

28. Miscellaneous (MIS): 814 new cases were received in this year, a reduction of 24% on the previous 12 months. There are no concerns with this activity, as the open MIS caseload is 63, which is the number it was in March 2014.
29. High Court: There are two open appeal cases from registrants. In one case the registrant has applied to the Court of Appeal to challenge an earlier High Court decision to dismiss the appeal against a striking off order. In the other case the appeal was dismissed but we are still in the process of trying to reach an acceptable cost settlement. There is one ongoing PSA appeal and one open judicial review. A judicial review of our power to refer amended allegations back to the Investigating Committee was successfully defended. Also an appeal brought by the PSA was also dismissed. However, the PSA have applied to the Court of Appeal for permission to appeal the High Court's earlier decision. Although the number of High Court cases is lower than in the previous 12 months the cases are often more complex and time consuming.
30. There were 83 learning points from PSA in 2014-15, compared to 133 in the previous 12 months. This is encouraging as the number of reviewable cases concluded in the period increased this year at 575 (versus 530 in the previous 12 months). The rate of learning points from cases therefore dropped from 25% in 2013-14, to 14% this year.

GSCC transfer cases August 2012-March 2014 – update on open activity

31. There is currently one case remaining in a pre ICP status. This case is awaiting the results of a complex criminal investigation without which we are unable to progress matters.
32. There are 14 final hearing cases. Of these, seven have dates fixed between now and June. Of the remaining seven cases, three have ongoing criminal trials, three have preliminary matters that are being prepared for panels, and the remaining case is currently being scheduled. It is likely that the cases should be concluded by September 2015 subject to no changes to the timetables for those awaiting criminal trials. The remaining case at Investigating Committee stage is unlikely to conclude before autumn 2015.

Other Activity

Case Management System

33. We are working with our third party suppliers to commence the ongoing enhancements project in April, as approved in the FTP workplan and budget discussions. This activity will be developed and delivered in phases throughout the coming 12 months.

Standard of Acceptance

34. We are progressing with our review of this key Council policy, with a revised version being presented to Council in May.

Recruitment

35. Two new case Managers joined in early April and an additional two will start in early May. Additionally, a recruitment campaign for further 4 Case Manager posts commenced in mid-April. Recruitment of a Hearings Officer, Case Support Officer and Scheduling Team Manager is also in progress.

Fitness to Practise Department

Management Information Pack

John Barwick, Director of Fitness to Practise
Activity in March 2015

Contents	Page
Glossary	11-13
Forecast Summary	14-15
Enquiries and Allegations Received by type: April 2013-March 2015	16
Cases Received: Profession & source of complaint April 2010 - March 2015	17-18
Pre ICP Case Information April 2013 - March 2015	19
Investigating Panel Decisions and Referrals April 2013 - March 2015	20-21
Investigating Panel Decisions by profession and source of allegation April 2009 - March 2015	22
Interim Order Cases April 2013 - March 2015	23-25
Panel Hearing Decisions (Preliminary and Final Hearings) April 2009 - March 2015	26
CCC and HC final hearings - Scheduling and Resources	27-28
Outcome of final hearing by representation April 2014 - March 2015	29
Final Hearings: Decision by profession April 2014 - March 2015	30
Review Hearing: Decision by profession April 2011 - March 2015	31
Registration Appeals April 2013 - March 2015	32
Protection of Title April 2013 - March 2015	33
Health and Character Declarations April 2013 - March 2015	34
Suitability Scheme August 2012 - March 2015	35
MIS Cases April 2013 - March 2015	36
Cases at Judicial Review or High Court/Court of Sherrif April 2013 - March 2015	37
Complaints relating to FTP Cases or Service April 2012 - March 2015	38
GSCC transfer cases August 2012 - March 2015	39-41
PSA Learning Points April 2013 - March 2015	42
Internal Operational Management Information	43
Internal Measuring tools Report 2013 - 2015	44-45
CMS Action Monitoring and Net Regulate Status Checks	46-47

Glossary	Headline description	Further information
Adjournments	The case starts its hearing activity but has a request from a party to cease	
Allegations	These are drafted by the Case Manager before the case is considered at ICP. The IC Panel can amend these allegations if they wish, based on their review of the information in front of them.	The allegations are what the Registrant is asked to comment on in their observations. The allegations are also used by the external investigators to investigate and present the case in a public hearing.
Allegations made: Investigating Panel (chart)	This chart shows the number and age of cases from the time the case met the standards of acceptance, until the final ICP decision. Only cases that have concluded at a final hearing are included.	
Cancellations	A hearing or meeting does not proceed due to being administratively cancelled	
Case to answer rate	The rate of cases that an Investigating Committee Panel find that meet the realistic prospect test.	The Case to Answer rate is the total number of cases referred for external investigation, divided by the total number of cases concluded at ICP. It does not include cases that require further information gathering by the Case Manager.
Closed PreICP	A case that does not meet the standard of acceptance can be closed without sending it to an Investigating Committee Panel.	Cases that are closed preICP are those where requests have been made for information to meet the allegation, but have not been provided, or where the case does not relate to HCPC fitness to practise standards.
Complaints	Complaints about FTP decisions, processes or service are logged centrally and reviewed at Executive Management Team. In FTP, a central logging and response process exists to ensure the 10 working day service standard is met, and issues with complaints are escalated appropriately.	Issues from review of complaints are reviewed and fed into the training, guidance or improvement workstreams in FTP
Enquiry cases	These cases are identifiable to an HCPC registrant, but do not currently meet the HCPC's Standard of Acceptance	Cases are anticipated to meet the standard of acceptance within four months of receipt of the original complaint.
Forecast	This is the number of cases that are expected and budgeted for in the annual budget planning process.	There is a re-forecast at 3, 6 and 9 months of the budget year to ensure any changes in activity are resourced or re-planned.
Full year effect (FYE)	This is the summary of activity in any completed year, described from 1 April to 31 March	
Further Information at ICP	These cases have been considered by the Investigating Committee Panel, but are considered to have insufficient detail to make a case to answer decision.	The Case Manager requests further information and the case is returned to a future IC Panel.
GSCC transfer cases	These cases were transferred on 1 August 2012, on the closure of the General Social Care Council	These cases are analysed and presented separately in the management commentary from those relating to social workers in England, which were received after 1 August 2012 directly by HCPC
Health and Character Declarations	If a Registrant declares an issue with their physical or mental health, or a caution or conviction, FTP can investigate and constitute a hearing to decide if the issue is compatible with being on HCPC register.	HCPC team members have administrative rights to close cases in line with the policy. Those cases that require review by a panel go to the Investigating Committee.
High Court activity	Professional Standards Authority have the power to appeal a decision made by an HCPC panel. Registrants also have the right to appeal a Panel decision or to request a judicial review of our processes or decisions.	These cases are presented by external lawyers at the High Court. HCPC can re-hear cases under certain circumstances.

ICP	The Investigating Committee is one of the committees that consider cases. The ICP decide if the realistic prospect test is met on the information in front of it, and refers cases for further (external) investigation.	The Investigating Committee Panel is not a public hearing, and uses the information contained in the papers prepared by the Case Manager to reach its decision.
Interim Orders	Interim orders can be applied for when there is considered to be significant risk to the public or the registrant from their alleged impairment of fitness to practise. An order can be applied for at any stage.	Orders can be granted or refused by a Panel. For those that are granted, they must be reviewed regularly (at 6 months from imposition, then every 3 months until the expiry - usually 18 months). Orders still required after the maximum 18 months have to be applied for extension at the relevant High Court.
Internal measuring tools	A range of time based measures for cases at each of the stages in the process are used to ensure that cases are progressing as expected, or that complex cases have the appropriate escalation actions.	Our case management system generates weekly and monthly reports to ensure any cases that are outside the service standards can be identified.
Length of time	Cases are measured from a number of points in their lifetime. These measures have service standards associated with them, and are used to trigger escalation activity for cases that exceed them. Information is taken from the Case Management System	Measures are taken from: receipt of the original complaint, the time the case meets the standard of acceptance, the time the case has been sent to the Registrant for observations; the date of the final IC Panel; the conclusion of the external investigation; the point at which the case is ready and then fixed for a final hearing; the conclusion of the final hearing.
Length of time Age of Post ICP (chart)	This chart shows the number and age of cases, measured from the ICP decision of case to answer. These cases have been to ICP.	
Length of time Cases Inv Committee (excluding further information) - (chart)	This chart shows the number and age of cases measured from the Standard of Acceptance for ICP cases that have concluded.	These cases may be closed no case to answer, or sent for investigation by external lawyers. Cases where an IC Panel asked for more information are excluded.
Length of time: Allegations made to conclusion of final hearing (chart)	This chart shows the number and age of cases that have concluded at a final hearing. The measure is the time taken from the meeting of the Standard of Acceptance to the conclusion of the final hearing.	
Length of time Investigating Panel - Case Concluded (chart)	This chart shows the time taken from the investigating committee panel decision to the conclusion of the final hearing.	
Length of time Open PreICP (chart)	This chart shows the number of cases and their age from the Standard of Acceptance. These cases have not been to ICP yet.	
Mean and median average	The mean is the average of the data, the median is the middle point of the range of the data	
Obs (Observations)	When a case meets the Standard of Acceptance, it is prepared to go to an Investigating Committee Panel. At the point of reaching the SOA, the Registrant is informed that there is a case against them, and invited to give their observations (Obs) on the complaint made against them.	Any Obs that come back after the 28 day period allowed for the Registrant's response go to the Investigating Committee Panel
Part Heard	A case starts its hearing activity, but does not conclude in the allotted time.	Further hearing time is arranged by the Scheduling team, liaising with all parties.
Post ICP cases	These cases have been considered by an Investigating Committee Panel and have a case to answer decision	The cases may be with external investigators (30%), Ready to fix (40%) or have a confirmed final hearing date that is in the future.

Pre ICP cases	These cases have met HCPC's Standard of Acceptance, but have not yet been considered by an Investigating Committee panel.	These cases may have Obs returned, or still be in the process of creating the allegations on which the Registrant is asked to provide Observations. ICP dates are generally arranged up to two months in advance. Cases are expected to have been to ICP for a decision within eight months of receipt of the original complaint.
Preliminary meetings	Can be used to manage aspects of the case, such as witness orders, use of the time available, or admissibility of evidence.	Preliminary meetings can be held virtually, or in person.
Profession	There are 16 professions regulated by HCPC	The management commentary breaks down the trends in new complaints, and also outcome of key decision stages by profession.
Protection of Title	If an individual uses one of the protected titles described in HCPC's Order, a prosecution can be pursued.	
PSA Learning Points	Professional Standards Authority review all final hearing decisions to ensure consistency and also that HCPC is not unduly lenient. They have the power to appeal these decisions. A monthly learning points letter is sent to HCPC containing their observations.	We review all learning points and respond to PSA with our views, including whether we agree with their opinion. We share these responses with our panels for individual learning, and also use case studies in our induction and refresher training courses.
Ready to Fix (RTF)	A case where the external investigation has concluded and can be scheduled for a final is described as ready to fix	The scheduling team at HCPC take RTF cases and liaise with all parties before fixing or confirming the date and location of the hearings. We assume approximately 30% of all post ICP cases will be RTF at any stage.
Realistic Prospect Test	This is set out in the standard of acceptance Council policy, and describes the likelihood of a Registrant's fitness to practise being found impaired.	It is a core component of the Standard of Acceptance policy.
Registration Appeals	Registrants who are refused entry to HCPC register can appeal.	Panels are arranged to consider the appeal.
Representation	Registrants may be represented by a union. Representation may happen at any stage in the process.	The management commentary reviews the outcome of decisions at ICP and at final hearing against whether the Registrant was engaged with the process. The registrant may represent themselves, by represented by others, or there may be no engagement from the registrant or a representative.
Review of substantive decisions	Cases where a suspension or caution is applied at a final hearing must be reviewed by an independent prior to the order expiring.	These panels can continue the original order, vary it, or allow it to expire. Following a period of suspension, Panels can strike a registrant off the register.
Source of complaint	These are categorised as: article 22(6)/Anonymous; Employer; Other; Other Registrant; Police; Professional body; Public; Self referral	The management commentary breaks down the trends in these different sources, and helps to guide FTP guidance development work.
Standard of Acceptance (SOA)	This is set out in Council's policy	
Year to date (YTD)	This is the summary of the information in the period 1 April to 31 March in the current budget year	

Key Forecast and Management Information Summary (FTP cases only)

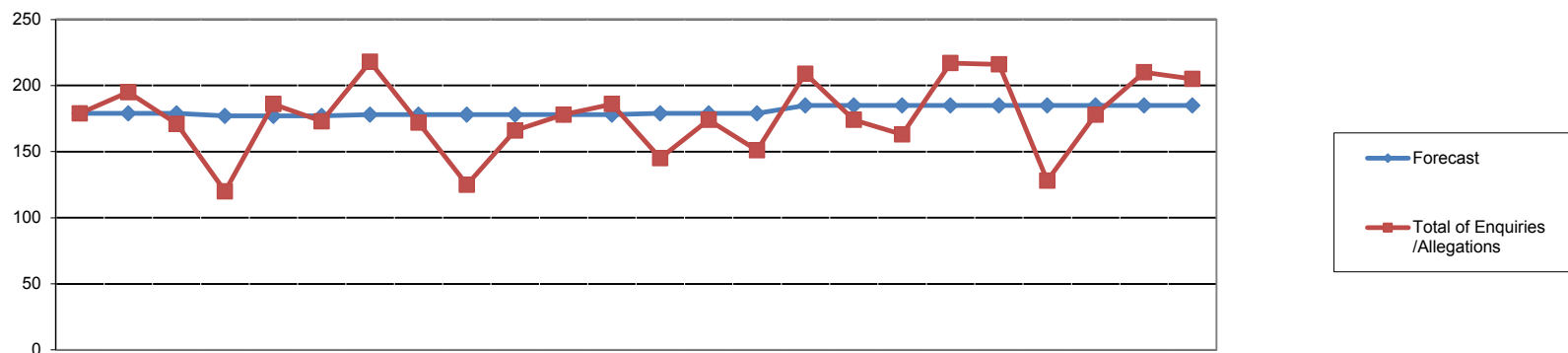
	13/14 Actual													14/15 Actual											14/15 Forecast						
	Apr	May	Jun	Jul	Aug	Sep	Oct	Nov	Dec	Jan	Feb	Mar	Year End	Apr	May	Jun	Jul	Aug	Sep	Oct	Nov	Dec	Jan	Feb	Mar	Year End Forecast	3 month re-forecast	6 month re-forecast	9 month re-forecast	Year end	
Cases Received	179	195	171	120	186	173	218	172	125	166	178	186	2069	145	174	151	209	174	163	217	216	128	178	210	205	2,149	2,131	2,131	2,134	2,170	
Cases pre ICP & Enquiry	918	976	1001	985	1039	1040	1086	1115	1098	1059	1143	1162	1162	1147	1173	1193	1234	1194	1276	1365	1445	1436	1437	1457	1441	1,015	1,173	1,264	1,373	1,441	
Cases closed pre ICP	67	87	99	72	76	96	92	78	89	94	76	98	1024	81	71	73	79	73	81	66	82	89	94	126	127	1,415	1,158	1,122	1,063	1,042	
Case to Answer percentage	38%	49%	61%	52%	57%	59%	53%	48%	53%	46%	47%	59%	50%	47%	57%	58%	55%	49%	57%	57%	56%	55%	42%	56%	55%	50%	50%	50%	55%	55%	
Cases awaiting hearing	260	267	268	262	273	286	298	309	321	323	336	350	350	354	368	381	397	403	427	418	419	420	426	437	428	417	449	468	458	428	
Cases per case manager (preICP)	45	42	46	47	46	48	52	53	47	45	42	54	54	53	52	50	51	46	44	52	50	49	50	53	52	42	49	45	46	52	
Case per case manager (post ICP)	N/A												N/A		17	16	16	17	16	15	16	15	14	15	16	16	25	19	25	27	16

NB: this does not include GSCC transfer cases or any cases that are in the review cycle of a substantive sanction

Cases per case manager

Month	Current month / variance	Month forecast	Year end forecast	Commentary
March	52/+7 (pre-ICP) 16 /- 9 (post-ICP)	45 (pre-ICP) 25 (post-ICP)	45 (pre-ICP) 25 (post-ICP)	<p>* The number of pre- and post-ICP cases per case manager has remained stable this month although it is still above the forecast level for pre-ICP cases.</p> <p>* Two new case Managers will commence in early April and an additional two will commence at the start of May. Additionally, a recruitment campaign for further 4 Case Manager posts will commence in mid-April.</p> <p>* Non-case load carrying temporary Case Managers finished up in post at the end of March but temporary Case Managers with a case load will remain in post until at least the end of April to assist in managing the cases under investigation.</p>
February	53/+8 (pre-ICP) 16/- 11 (post-ICP)	45 (pre-ICP) 25 (post-ICP)	45 (pre-ICP) 25 (post-ICP)	<p>* The number of cases per case manager has increased since last month. This is in part due to a case Manager finishing in post in February and also as a result of the higher than forecast number of new cases received in February;</p> <p>* The Case Manager recruitment exercise is now complete. We expect 4 new Case Managers to commence in post in early April;</p> <p>* The temporary Case Managers are continuing to provide assistance to the permanent Case Managers whilst not themselves carrying caseloads.</p>
January	50/+5 (pre-ICP) 15/- 10 (post-ICP)	45 (pre-ICP) 25 (post-ICP)	45 (pre-ICP) 25 (post-ICP)	<p>* The number of cases per Case Manager has remained stable this month. Whilst caseloads remain above forecast (due to vacancies being carried in the Case Management Team), it is anticipated that caseloads will return to within forecast levels once the recruitment exercise for the 4 Case Manager vacancies has concluded (end of February). In the mean time, the Case Management Team is deploying Temporary Case Managers to provide resource cover. The Temporary Case Managers recruited since January 2015 are no longer carrying a caseload but are being deployed to assist with specific case management tasks. This has the effect of increasing permanent Case Managers' caseloads but provides support for Case Managers to deal with the increase with the assistance of Temps. It also negates the requirement to reallocate entire caseloads when Temporary Case Managers finish up their terms with the HCPC.</p>

Enquiries and Allegations Received by type: April 2013-March 2015



	2013			2014									2015											
	Apr	May	Jun	Jul	Aug	Sep	Oct	Nov	Dec	Jan	Feb	Mar	Apr	May	Jun	Jul	Aug	Sep	Oct	Nov	Dec	Jan	Feb	Mar
Forecast	179	179	179	177	177	177	178	178	178	178	178	178	179	179	179	185	185	185	185	185	185	185	185	185
Enquiries	162	184	157	111	168	167	209	167	120	162	172	181	140	166	149	204	168	160	216	211	125	174	203	204
Allegations	17	11	14	9	18	6	9	5	5	4	6	5	5	8	2	5	6	3	1	5	3	4	7	1
Total of Enquiries /Allegations	179	195	171	120	186	173	218	172	125	166	178	186	145	174	151	209	174	163	217	216	128	178	210	205
Article 22(6)/Anon	11	6	2	4	4	5	7	14	2	5	9	8	4	9	4	7	9	2	2	4	2	7	5	10
Employer	47	63	42	49	58	46	58	45	34	48	48	55	37	55	43	65	40	47	53	53	25	37	41	58
Other	4	7	9	4	5	8	10	10	6	6	2	10	6	1	4	5	7	11	16	22	7	9	6	9
Other Registrant	5	6	10	7	8	2	7	3	2	14	6	8	8	6	5	7	6	3	7	5	2	1	11	10
Police	4	3	4	2	5	5	4	2	2	3	2	1	3	2	0	0	2	2	2	5	1	1	3	0
Professional body	1	1	1	2	0	1	4	1	0	1	1	1	1	2	2	3	2	1	2	0	1	0	0	1
Public	76	74	73	29	67	72	77	70	58	58	77	62	58	62	60	93	86	67	101	89	75	92	112	93
Self-referral	31	35	30	23	39	34	51	27	21	31	33	41	28	37	33	29	22	30	34	38	15	31	32	24

10/11 FYE	11/12 FYE	12/13 FYE	13/14 FYE	14/15 YTD
	n/a		n/a	n/a
275	500	1,452	1,960	2120
484	425	201	109	50
759	925	1,653	2,069	2170
166	283	58	77	65
217	289	435	593	554
18	33	87	81	103
74	53	99	78	71
25	27	27	37	21
3	12	21	14	15
256	228	634	793	988
NA	NA	NA	396	353

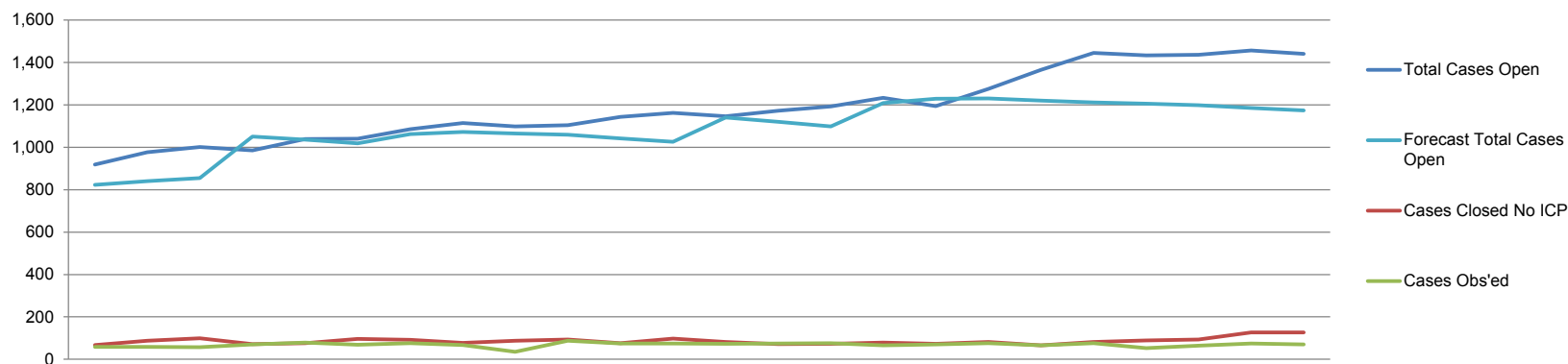
Cases Received: Profession & source of complaint April 2010 - March 2015

	Article 22(6)/Anon	Employer	Other	Other registrant	Police	Professional bodies	Public	Self referral	10/11 FYE	11/12 FYE	12/13 FYE	13/14 FYE	14/15 YTD
Arts therapists	0	4	0	1	0	0	3	3	9	4	7	4	11
Biomedical scientists	1	22	0	5	0	1	3	4	36	66	37	50	36
Chiropodists & podiatrists	1	13	2	0	1	2	27	10	74	55	53	71	56
Clinical scientists	0	3	0	1	0	0	0	2	10	9	9	3	6
Dietitians	0	6	0	0	0	1	3	5	9	12	13	21	15
Hearing aid dispensers	0	2	0	0	0	2	9	5	44	23	25	22	18
Occupational therapists	6	33	4	2	2	1	29	20	63	96	76	105	97
ODPs	3	25	6	1	1	0	2	22	39	63	45	63	60
Orthoptists	0	0	0	1	0	0	0	1	0	2	2	2	2
Paramedics	16	52	9	10	0	2	42	100	188	253	262	266	231
Physiotherapists	3	37	6	4	7	0	58	18	104	118	123	134	133
Practitioner psychologists	2	17	14	14	1	1	99	9	117	139	179	157	157
Prosthetists & orthotists	0	2	0	0	0	0	0	0	1	2	1	2	2
Radiographers	1	35	3	4	4	2	13	18	40	58	55	59	80
Social workers	32	295	58	28	5	2	696	135	n/a	n/a	733	1,085	1,251
SLTs	0	8	1	0	0	1	4	1	25	25	33	25	15
Total	65	554	103	71	21	15	988	353	759	925	1,653	2,069	2,170

Commentary

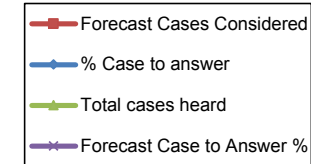
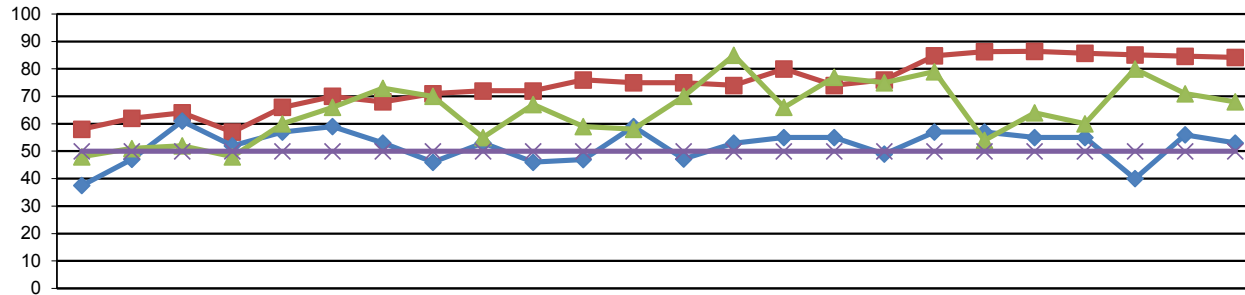
Month	Commentary
March	<ul style="list-style-type: none">* Social Worker FTP referrals continue to represent 58% of all FTP referrals received YTD.* Members of the public are the largest complainant category, with 46% of all FTP referrals received coming from this group, YTD* 56% of all FTP referrals received in relation to Social Workers come from members of the public
February	<ul style="list-style-type: none">* The proportion of fitness to practise referrals received in relation to Social Workers remains at 58% YTD.* 45% of all fitness to practise referrals received come from members of the public.* Members of the public represent the largest complainant group in relation to Social Work referrals (55% YTD).
January	<ul style="list-style-type: none">* The proportion of fitness to practise referrals received in relation to Social Workers remains at 58% YTD.* 45% of all fitness to practise referrals received come from members of the public.* Members of the public represent the largest complainant group in relation to Social Work referrals (54% YTD).

Pre - ICP case information April 2013 - March 2015



	2013												2014												2015												13/14	14/15
	Apr	May	Jun	Jul	Aug	Sep	Oct	Nov	Dec	Jan	Feb	Mar	Apr	May	Jun	Jul	Aug	Sep	Oct	Nov	Dec	Jan	Feb	Mar	Apr	May	Jun	Jul	Aug	Sep	Oct	Nov	Dec	Jan	Feb	Mar	YTD	YTD
Forecast cases received	179	179	179	177	177	177	178	178	178	178	178	179	179	179	185	185	185	185	185	185	185	185	185	179	179	179	185	185	185	185	185	185	185	185	185			
Cases Received	179	195	171	120	186	173	218	172	125	166	178	145	174	151	209	174	163	217	216	128	178	210	205	145	174	151	209	174	163	217	216	128	178	210	205	2,069	2,202	
Allegations Open	222	229	238	255	283	298	309	290	272	295	298	291	273	283	271	287	265	284	290	276	259	269	272	291	273	283	271	287	265	284	290	276	259	269	272	307	2,170	
Enquiries Open	696	747	763	730	756	743	777	825	826	810	845	856	900	910	963	907	1011	1081	1155	1157	1178	1188	1169	856	900	910	963	907	1011	1081	1155	1157	1178	1188	1169	855	900	
Total Cases Open	918	976	1,001	985	1,039	1,041	1,086	1,115	1,098	1,105	1,143	1,147	1,173	1,193	1,234	1,194	1,276	1,365	1,445	1,433	1,437	1,457	1,441	1,147	1,173	1,193	1,234	1,194	1,276	1,365	1,445	1,433	1,437	1,457	1,441	1,162	1,173	
Forecast Total Cases Open	823	841	855	1,051	1,036	1,019	1,062	1,073	1,065	1,059	1,041	1,140	1,121	1,098	1,208	1,229	1,230	1,221	1,212	1,205	1,199	1,186	1,173	1,140	1,121	1,098	1,208	1,229	1,230	1,221	1,212	1,205	1,199	1,186	1,173	1,027	1,121	
Percentage of Cases in Pre ICP Remit	24	23	24	26	27	29	28	26	25	27	26	25	23	24	22	24	21	21	20	19	18	18	19	25	23	24	22	24	21	21	20	19	18	18	19			
Cases Considered at CPC	5	2	3	2	5	13	6	3	2	1	11	6	7	5	2	4	9	4	5	7	8	9	11	6	7	5	2	4	9	4	5	7	8	9	11	95	254	
Cases Closed No ICP	67	87	99	72	76	96	92	78	88	94	76	81	71	73	79	73	81	66	82	89	94	126	127	81	71	73	79	73	81	66	82	89	94	126	127	1,023	77	
% of Cases Closed no ICP	10	12	13	10	10	13	12	10	11	12	9	10	8	8	8	8	8	6	7	8	8	11	11	10	8	8	8	8	8	6	7	8	8	11	11			
Forecast % cases closed No ICP	16	16	16	9	16	16	11	12	14	14	15	11	11	11	11	11	11	9	10	11	12	13	13	11	11	11	11	11	11	9	10	11	12	13	13	n/a	n/a	
Cases Obs'ed	58	58	57	70	79	69	76	67	36	87	75	73	74	76	66	70	76	66	76	53	64	75	70	73	74	76	66	70	76	66	76	53	64	75	70	1383	134	
Forecast Cases Obs'ed	62	64	65	66	70	68	68	67	66	70	70	80	79	77	85	86	86	86	85	85	84	83	82	80	79	77	85	86	86	86	85	85	84	83	82	804	893	
% of Pre ICP cases Obs'ed	26	25	24	27	28	23	25	23	13	29	25	25	27	27	24	24	29	23	26	19	25	28	26	25	27	27	24	24	29	23	26	19	25	28	26			
Forecast % cases Obs'ed	28	28	28	26	28	28	28	28	28	30	30	27	27	27	27	27	27	27	27	27	27	27	27	27	27	27	27	27	27	27	27	27	27	27	27			

Investigating Panel decisions and referrals April 2013 - March 2015



		2012					2013											2014								
		Apr	May	Jun	Jul	Aug	Sep	Oct	Nov	Dec	Jan	Feb	Mar	Apr	May	Jun	Jul	Aug	Sep	Oct	Nov	Dec	Jan	Feb	Mar	
Case to Answer	Forecast Cases Considered	58	62	64	57	66	70	68	71	72	72	76	75	75	74	80	74	76	85	86	86	86	85	85	84	
	Total cases heard	48	51	52	48	60	66	73	70	55	67	59	58	70	85	66	77	75	79	54	64	60	80	71	68	
	Referred to CCC (Reg representations)	14	17	15	16	18	19	24	16	14	21	16	20	17	33	22	23	14	29	15	18	20	16	24	21	
	Referred to CCC (Rep representations)	2	4	5	4	2	5	3	4	2	3	4	4	2	2	2	7	4	5	3	3	3	2	3	4	
	Referred to CCC (No representations)	2	3	10	4	11	14	9	11	10	6	7	10	14	10	9	10	16	8	10	11	9	11	11	9	
	Referred to HC (Reg representations)	0	0	0	0	2	0	0	1	2	0	1	0	0	0	1	0	0	0	0	2	0	0	0	1	
	Referred to HC (Rep representations)	0	0	0	0	0	0	0	0	0	0	0	0	0	0	0	0	0	0	0	0	0	0	0	0	
	Referred to HC (No representations)	0	0	0	0	1	1	0	0	1	1	0	0	0	0	0	2	1	1	0	0	1	0	2	0	1
	Referred to IC (Reg representations)	0	0	0	0	0	0	0	0	0	0	0	0	0	0	0	0	0	0	0	0	0	0	0	0	
	Referred to IC (Rep representations)	0	0	0	0	0	0	0	0	0	0	0	0	0	0	0	0	0	0	0	0	0	0	0	0	
Referred to IC (No representations)	0	0	1	0	0	0	0	0	0	0	0	0	0	0	0	0	0	0	0	0	0	0	0	0		
Forecasted Cases Referred		27	29	30	28	32	34	33	35	35	35	37	37	37	36	39	36	37	41	42	42	42	42	41	41	
Total case to answer		18	24	31	24	34	39	36	32	29	31	28	34	33	45	36	41	35	42	28	35	32	32	38	36	
Forecast Case to Answer %		50	50	50	50	50	50	50	50	50	50	50	50	50	50	50	50	50	50	50	50	50	50	50	50	
% Case to answer		38	47	61	52	57	59	53	46	53	46	47	59	47	53	55	55	49	57	57	55	55	40	56	53	
No case to answer	Not referred (Reg representations)	23	21	19	15	21	19	25	29	21	25	24	14	32	28	21	28	28	27	18	16	20	33	24	26	
	Not referred (Rep representations)	2	2	1	2	0	3	3	3	3	3	3	6	2	4	3	2	7	3	2	7	3	9	6	0	
	Not referred (No representations)	4	2	0	5	4	2	4	2	1	6	3	2	3	2	2	3	2	1	1	4	3	3	0	4	
	Total cases not referred	29	25	20	22	25	24	32	34	25	34	30	22	37	34	26	33	37	31	21	27	26	45	30	30	
Further Information		1	2	1	2	1	3	5	4	1	2	1	2	0	6	4	3	3	6	5	2	2	3	3	2	

10/11 FYE	11/12 FYE	12/13 FYE	13/14 FYE	14/15 YTD
533	516	543	707	849
178	176	181	210	252
22	19	29	42	40
79	49	83	97	128
6	6	5	6	4
3	2	0	0	0
5	0	3	4	8
1	0	0	0	0
0	0	0	0	0
0	0	0	1	0
n/a	n/a	n/a	394	478
306	254	304	360	433
n/a	n/a	n/a	n/a	n/a
57	49	56	53	53
195	197	176	256	301
13	21	28	31	48
10	29	18	35	28
223	246	231	322	377
21	18	20	25	39

**Commentary
Cases Considered**

Month	Current month / variance	Month forecast	Year end forecast	Commentary
March	68/-16	84	899	* The below forecast numbers of cases considered at ICP continues to reflect lower than forecast obs numbers in earlier months.
February	71/-14	85	899	* The number of cases considered at an ICP continued below forecast and is again a consequence of below forecast obs numbers in recent months.
January	80/-5	85	899	* The number of cases considered at ICP was below forecast. However, there was an improvement against the number of cases considered at ICP in December. This can in part be explained by the shorter working month in December, resulting in cases that could have been listed for December spilling over into January. It can also be explained by the shortfall in obs in previous months

Investigating Panel Decisions by profession and source of allegation April 2009 - March 2015

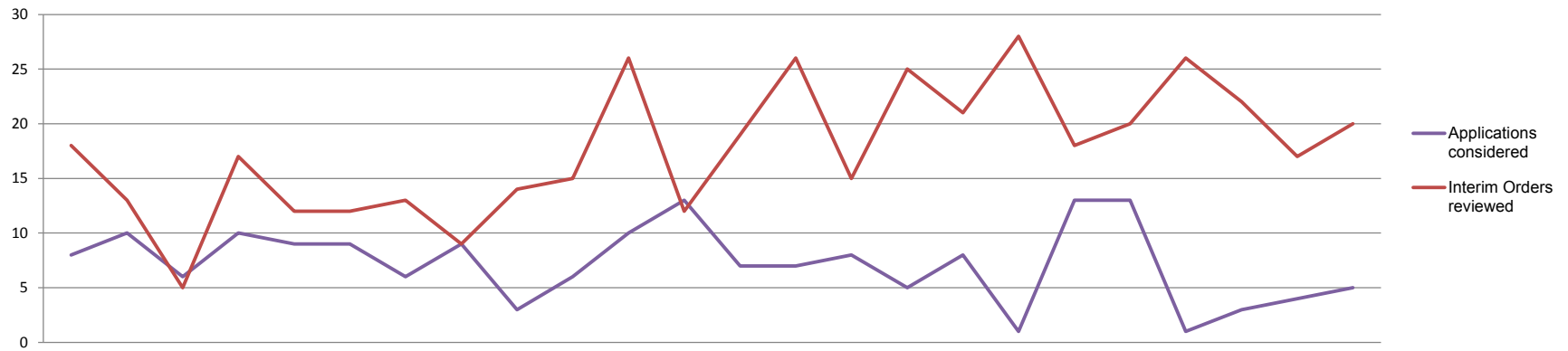
By Profession	No Case to Answer	Further Information requested (FI)	Case to Answer			Total YTD
			CCC	HC	IC	
Arts therapists	0	0	2	0	0	2
Biomedical scientists	4	0	22	2	0	28
Chiropodists & podiatrists	26	2	8	0	0	36
Clinical scientists	1	0	0	0	0	1
Dietitians	5	0	5	0	0	10
Hearing aid dispensers	2	0	3	0	0	5
Occupational therapists	22	2	17	1	0	42
ODPs	13	2	25	1	0	41
Orthoptists	3	0	0	0	0	3
Paramedics	49	4	54	1	0	108
Physiotherapists	29	2	24	1	0	56
Practitioner psychologists	33	4	16	0	0	53
Prosthetists & orthotists	1	0	0	0	0	1
Radiographers	15	0	26	2	0	43
Social workers	167	23	213	5	0	408
SLTs	7	0	5	0	0	12
Total YTD	377	39	420	13	0	849

10/11 FYE	11/12 FYE	12/13 FYE	13/14 FYE	14/15 YTD
2	1	3	1	2
37	37	26	23	28
60	40	27	31	36
4	10	3	2	1
13	5	14	7	10
13	12	9	5	5
48	55	44	47	42
32	37	37	25	41
1	1	1	0	3
113	139	128	100	108
86	65	69	71	56
66	60	67	36	53
4	0	1	1	1
33	39	35	32	43
		58	311	408
21	15	21	15	12
533	516	543	707	849

By source of allegation	No Case to Answer	Further Information requested (FI)	Case to Answer			Total YTD
			FI	CCC	HC	
Article 22(6)/Anon	9	1	10	0	0	20
Employer	128	17	261	11	0	417
Other	13	0	8	0	0	21
Other Registrant	10	0	11	0	0	21
Police	7	0	11	1	0	19
Professional body	3	1	0	0	0	4
Public	94	10	29	0	0	133
Self referral	113	10	90	1	0	214
Total YTD	377	39	420	13	0	849

10/11 FYE	11/12 FYE	12/13 FYE	13/14 FYE	14/15 YTD
94	139	72	23	20
208	204	263	321	417
13	14	24	17	21
37	22	22	17	21
28	21	17	21	19
2	5	2	9	4
151	111	109	133	133
n/a	n/a	34	166	214
533	516	543	707	849

Interim Orders Cases April 2013 - March 2015



	2013			2014												13/14 YTD	14/15 YTD									
	Apr	May	Jun	Jul	Aug	Sep	Oct	Nov	Dec	Jan	Feb	Mar	Apr	May	Jun			Jul	Aug	Sep	Oct	Nov	Dec	Jan	Feb	Mar
Applications considered	8	10	6	10	9	9	6	9	3	6	10	13	7	7	8	5	8	1	13	13	1	3	4	5	99	75
Applications granted	4	10	6	10	8	8	6	9	2	4	8	13	6	6	6	5	8	1	11	12	1	3	4	4	88	67
Applications not granted	4	0	0	0	1	1	0	0	1	2	2	0	1	1	2	0	0	0	2	1	0	0	0	1	11	8
Interim Orders reviewed	18	13	5	17	12	12	13	9	14	15	26	12	19	26	15	25	21	28	18	20	26	22	17	20	166	257
Interim Orders revoked	0	0	0	0	0	0	0	0	0	0	1	0	1	0	0	0	0	0	0	5	1	0	0	1	1	8
IO instructed for High Court extension										4	0	3	0	2	1	3	0	0	0	0	0	0	5	3		
Total days (all locations)	11	14	9	11	10	8	8	10	9	10	16	11	14	14	12	14	14	12	12	18	15	13	13	11	126	162
% days at Park House	90	80	68	64	90	100	95	85	95	74	97	90	93	82	88	96	96	92	83	85	93	69	93	88	86	88
% external	10	20	32	36	1	0	5	15	5	26	3	10	7	18	12	4	4	8	17	15	7	31	7	12	14	12

Commentary

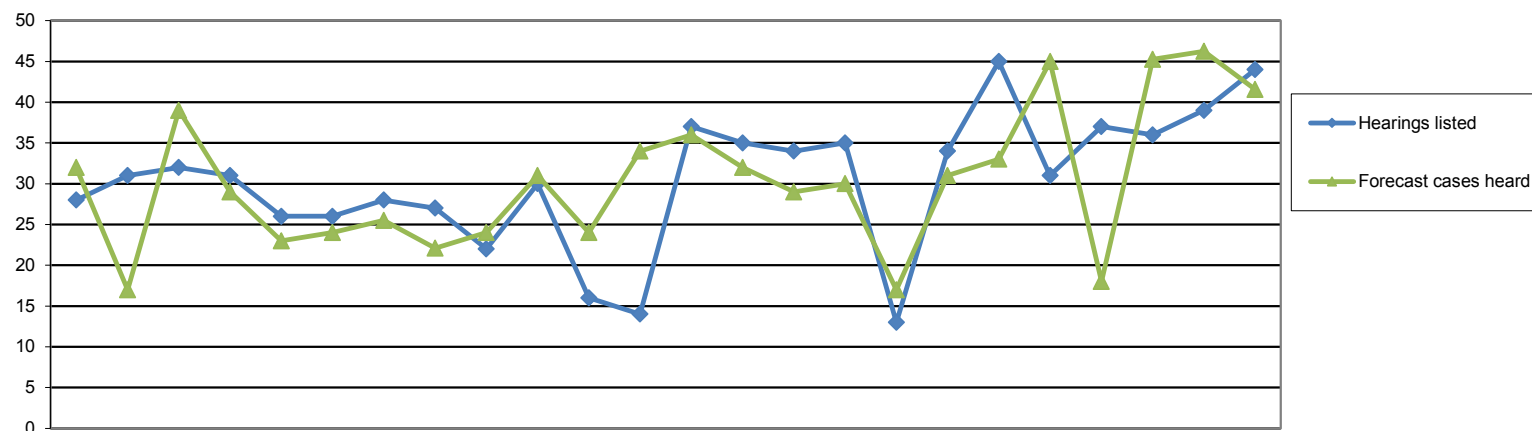
Cases within 6 months of IO expiry pre-ICP

Month	Current month / variance	Month forecast	Year end forecast	Commentary
March	18	n/a	n/a	<p>* There are a total of 18 cases due to expire within the next 6 months, which is a decrease of 3 cases compared to last month.</p> <p>* 16 of these cases are in the Conduct and Competence Committee remit, of which 1 case is a GSCC transfer case. There are also 2 cases in the Health Committee remit. 7 are scheduled for final hearing. There are no cases in the Pre Investigating Panel stage.</p> <p>* We have instructed BDB to apply for an extension to the High Court on 3 cases, as we are unable to conclude the matters before the expiry date.</p>
February	21	n/a	n/a	<p>* There are a total of 21 cases due to expire within the next 6 months, which is a decrease of 3 cases compared to last month. Only 1 cases is in the Pre Investigating Panel stage, in which there are on-going CQC investigations.</p> <p>* Like last month, 18 of these cases are in the Conduct and Competence Committee remit, of which 1 case is a GSCC transfer case. There are also 2 cases in the Health Committee remit. 10 are scheduled for final hearing. 2 cases are ready to fix, therefore the scheduling team are prioritising these cases.</p> <p>* We have instructed BDB to apply for an extension to the High Court for 5 cases, as we are unable to conclude the matters before the expiry date.</p>
January	24	n/a	n/a	<p>* There are a total of 24 cases due to expire within the next 6 months, which is the exact same figure as last month. of these cases are in the Pre Investigating Panel stage, of which 1 case is a GSCC transfer. 2 of these cases have on-going criminal proceedings, therefore we are in the process of obtaining updates from the Police. The other case went to ICP In November 2014, however the Panel requested for the allegations to be amended, therefore the new ICP date is this month.</p> <p>*18 of these cases are in the Conduct and Competence Committee remit, of which 1 case is a GSCC transfer case. There are also 3 cases in the Health Committee remit. 11 are scheduled for final hearing and 2 cases are ready to fix, so schedulers are currently in the process of scheduling dates.</p> <p>* Out of the 25 cases, we have instructed BDB to apply for an extension to the High Court for 8 cases, as we are unable to conclude the matters before the expiry date. These cases are being closely monitored to ensure the cases are dealt with expeditiously.</p>

Mean and median Length of Time

Month	Current month / variance	Year cumulative Total	Forecast	Commentary
March	13 days Mean 15 days Median	18 days Mean 16 days Median	15 days Mean 15 days Median	*There were 6 interim order applications that took place in March, which is an increase of 1 case compared to last month. * 6 cases were scheduled within forecast taking between 8 -15 days. There was only 1 case which took 17 days which is slightly over the forecast, however on the whole we are consistently meeting forecast.
February	12 days Mean 13 days Median	18 days Mean 17 days Median	15 days Mean 15 days Median	*We heard 4 interim order applications in February, which is an increase of 1 case compared to last month. *All 4 cases were scheduled within forecast taking between 8 -15 days. *We will keep monitoring this on a monthly basis, to ensure it remains consistent.
January	22 days Mean 25 days Median	18 days Mean 17 days Median	15 days Mean 15 days Median	*There were a total of 3 interim order applications made in January, which is an increase of 2 cases compared to last month. *The length of time for this month has ranged from 14 -27 days. *1 case took 14 days which is in line with our forecast. *The decision taken to apply for the remaining 2 IO's took place at the end of December, therefore we were unable to fit the scheduling in before the Christmas break as the office was closed; this consequently had an impact on the length of time. *Although we did not meet forecast this month, the reasons were due to the amount of working days we had in December, therefore it is not a concern at this stage. Next month we should see an improvement.

Panel Hearings Decisions (Preliminary and Final Hearings) April 2009 - March 2015



	2013												2014												2015												10/11	11/12	12/13	13/14	14/15	
	Apr	May	Jun	Jul	Aug	Sep	Oct	Nov	Dec	Jan	Feb	Mar	Apr	May	Jun	Jul	Aug	Sep	Oct	Nov	Dec	Jan	Feb	Mar	Apr	May	Jun	Jul	Aug	Sep	Oct	Nov	Dec	Jan	Feb	Mar	FYE	FYE	FYE	FYE	YTD	
Preliminary hearings	4	1	4	2	5	2	4	3	0	3	1	5	0	6	1	6	3	3	4	1	3	9	3	9	0	6	1	6	3	3	4	1	3	9	3	9	n/a	n/a	n/a	12	48	
Forecast cases heard	32	17	39	29	23	24	26	22	24	31	24	34	36	32	29	30	17	31	33	45	18	45	46	42	36	32	29	30	17	31	33	45	18	45	46	42	n/a	n/a	n/a	325	404	
Forecast cases adjourned	6	3	8	2	2	2	5	4	4	5	4	5	4	3	3	3	2	3	3	5	2	5	5	4	4	3	3	3	2	3	3	5	2	5	5	4	n/a	n/a	n/a	49	40	
Conduct & Competence and Health Committee	Hearings listed	28	31	32	31	26	26	28	27	22	30	16	14	37	35	34	35	13	34	45	31	37	36	39	44	37	35	34	35	13	34	45	31	37	36	39	44	424	399	266	311	420
	Adjourned / cancelled / postponed	4	1	2	2	0	5	1	3	3	2	1	1	1	2	6	2	0	4	4	4	5	3	3	0	1	2	6	2	0	4	4	4	5	3	3	0		22	24	25	34
	Caution	1	5	4	6	1	4	3	3	1	2	3	3	5	2	5	8	2	2	7	4	6	3	5	3	5	2	5	8	2	2	7	4	6	3	5	3	71	44	41	36	52
	Conditions of practice	1	2	2	4	3	1	1	2	2	3	2	3	4	4	3	2	2	2	4	2	3	5	3	5	4	4	3	2	2	2	4	2	3	5	3	5	21	13	14	26	39
	No further action	2	1	0	0	0	0	0	1	0	1	1	0	2	1	1	0	0	1	0	0	0	1	0	0	2	1	1	0	0	1	0	0	0	1	0	0	3	2	2	6	6
	Not well founded /wholly discontinued	6	5	12	6	5	5	9	5	5	6	3	2	9	5	7	3	4	10	8	7	9	6	5	16	9	5	7	3	4	10	8	7	9	6	5	16	83	55	54	69	89
	Part heard	2	3	2	0	0	1	0	3	1	2	1	0	3	3	2	4	1	2	5	2	2	6	5	3	3	3	2	4	1	2	5	2	2	6	5	3	107	16	11	15	38
	Referred to other committee	1	1	0	0	1	0	1	0	0	0	0	0	0	0	0	0	0	0	0	0	0	3	0	0	0	0	0	0	0	0	0	0	0	3	0	0	5	2	2	4	3
	Consent - removed	1	3	1	2	2	2	2	1	3	1	1	1	1	2	0	5	0	3	3	1	7	2	4	3	1	2	0	5	0	3	3	1	7	2	4	3	15	12	12	20	31
	Consent - caution	0	0	0	0	0	0	0	0	0	0	0	0	0	0	0	0	0	0	0	0	0	0	0	0	0	0	0	0	0	0	0	0	0	0	0	0	n/a	n/a	n/a	0	0
	Consent - conditions	0	0	0	0	0	0	0	0	0	0	0	0	0	0	0	0	0	0	0	0	0	0	0	0	0	0	0	0	0	0	0	0	0	0	0	0	n/a	n/a	n/a	0	0
	Consent - suspension	0	0	0	0	0	0	0	0	0	0	0	0	0	0	0	0	0	0	0	0	0	0	0	0	0	0	0	0	0	0	0	0	0	0	0	0	n/a	n/a	n/a	0	0
	Struck off	3	5	6	5	7	4	3	3	5	6	4	1	6	5	7	4	0	7	8	6	2	2	8	7	6	5	7	4	0	7	8	6	2	2	8	7	62	50	44	52	62
	Suspended	7	4	3	6	7	4	8	6	2	7	0	3	6	11	3	7	4	3	8	6	3	5	6	7	6	11	3	7	4	3	8	6	3	5	6	7	44	60	61	57	69
	Investigating	Amended	0	0	0	0	0	0	0	0	0	0	0	0	0	0	0	0	0	0	0	0	0	0	0	0	0	0	0	0	0	0	0	0	0	0	0	0	0	0	0	0
No further action		0	0	0	0	0	0	0	0	0	0	0	0	1	0	0	0	0	0	0	0	0	0	0	0	1	0	0	0	0	0	0	0	0	0	0	1	0	0	0	1	
Not well found		0	0	0	0	0	0	0	0	0	0	0	0	0	0	0	0	0	0	0	0	0	0	0	0	0	0	0	0	0	0	0	0	0	0	0	1	0	0	0	0	
Part heard		0	0	0	0	0	0	0	0	0	0	0	0	0	0	0	0	0	0	0	0	0	0	0	0	0	0	0	0	0	0	0	0	0	0	0	0	1	1	0	0	
Removed		0	1	0	0	0	0	0	0	0	0	0	0	0	0	1	0	0	0	0	0	0	0	0	0	0	0	1	0	0	0	0	0	0	0	0	1	1	1	1	1	
Cases concluded (excluding GSCC)	22	27	28	29	26	20	27	21	18	26	14	13	33	30	26	29	12	28	38	26	30	27	31	41	33	30	26	29	12	28	38	26	30	27	31	41					351	

CCC and HC final hearings - Scheduling and Resource descriptions

	2013			2014									2015			13/14	14/15									
	Apr	May	Jun	Jul	Aug	Sep	Oct	Nov	Dec	Jan	Feb	Mar	Apr	May	Jun	Jul	Aug	Sep	Oct	Nov	Dec	Jan	Feb	Mar	FYE	YTD
Forecast hearing days	73	39	89	59	48	49	57	64	55	71	64	74	90	80	73	69	51	124	83	113	46	133	139	129	644	1130
Cases scheduled HCPC (all hearing types)	28	31	37	23	21	26	51	31	29	34	20	42	38	32	38	34	20	31	34	28	27	19	35	42	373	378
Days scheduled HCPC (all hearing types)	72	67	76	56	44	53	90	92	60	78	57	92	80	84	78	67	54	94	106	83	46	50	101	89	837	932
Cases scheduled external (all hearing types)	4	7	5	7	4	5	6	3	6	7	6	2	5	10	4	1	2	9	4	7	7	6	10	10	62	75
Days scheduled external (all hearing types)	12	21	12	23	8	10	17	17	17	20	16	2	17	40	12	6	4	29	18	30	13	29	31	29	175	258
Days	84	88	88	79	52	63	107	109	77	98	73	94	97	124	90	73	58	123	124	113	59	79	132	118	1012	1190
% cases external	14	23	14	29	85	84	12	10	20	17	23	2	18	0	10	3	9	23	11	20	21	63	22	24	28	19
% days external	17	31	16	71	15	16	16	16	22	20	22	98	1	1	13	3	7	24	15	27	22	37	23	25	30	16
Witnesses	40	57	70	45	55	73	75	55	48	78	51	87	94	97	61	60	46	87	103	61	41	97	91	84	61	77

Days of hearings at HCPC planned

Month	Current month /	Month forecast	Year forecast	Commentary
March	83%	88%	88%	<ul style="list-style-type: none"> * In total there are 47 hearings and 113 days of final hearing activity planned in April * 39 of these are planned at HCPC premises over 94 days , which is 83% of all hearings activity. * The percentage of external hearings is slightly higher than predicted for April but is lower than in the previous month.. * 9 days of hearing activity were held at alternative venues in England following a panel direction on to ensure fairness to HCPC witnesses * Overall hearing levels are in accordance with the planned activity schedule. * To make effective use of HCPC premises extra rooms at 186 Kennington Park road will be used on every day and the Old Council Chamber will be segregated on 6 occasions
February	81%	88%	88%	<ul style="list-style-type: none"> * In total there are 51 hearings and 121 days of final hearing activity planned in February * 40 of these are planned at HCPC premises over 98 days , which is 81% of all hearings activity. * The percentage of external hearings is slightly higher than predicted for February but lower than in previous months. * 14 days of hearing activity were held at alternative venues in England to ensure fairness to registrants and/or witnesses * Overall hearing levels are in accordance with the planned activity schedule and were higher than the planned activity schedule in the previous month. * This enabled us to catch up on the annual forecast for hearings, as scheduling levels were lower than forecast in January. * To make effective use of HCPC premises extra rooms at 186 Kennington Park road will be used on every day and the Old Council Chamber will be segregated on 8 occasions
January	73%	88%	88%	<ul style="list-style-type: none"> * In total there are 41 hearings and 137 days of final hearing activity planned in February * 32 of these are planned at HCPC premises over 98 days , which is 73% of all hearings activity. * The percentage of external hearings is higher than predicted for January * The average length of hearings that needed to be held externally in accordance with statutory provisions was 4 days, which is higher than the overall average. * One five day hearing also had to be held at an external venue in london due to a lack of available space at HCPC premises. * Overall hearing levels are above the planned activity schedule, which was for 116 days of final hearings in February * This enabled us to catch up on the annual forecast for hearings, as scheduling levels were lower than forecast in January. * To make effective use of HCPC premises extra rooms at 186 Kennington Park road will be used on every day and the Old Council Chamber will be segregated on 6 occasions

Outcome of final hearing by representation April 2014 - March 2015

	Represented self	Represented	No representation	Total
Caution	11	24	16	51
Conditions	10	21	8	39
No Further Action	3	3	0	6
Not Well Found	27	39	9	75
Discontinued in full	4	5	7	16
Not restored	0	0	0	0
Register entry amended	0	0	0	0
Removed	1	0	1	2
Struck Off	7	9	46	62
Suspended	10	9	50	69
Consent - removed	0	0	28	28
Consent - caution	0	0	0	0
Consent - conditions	0	0	0	0
Total	73	110	165	351

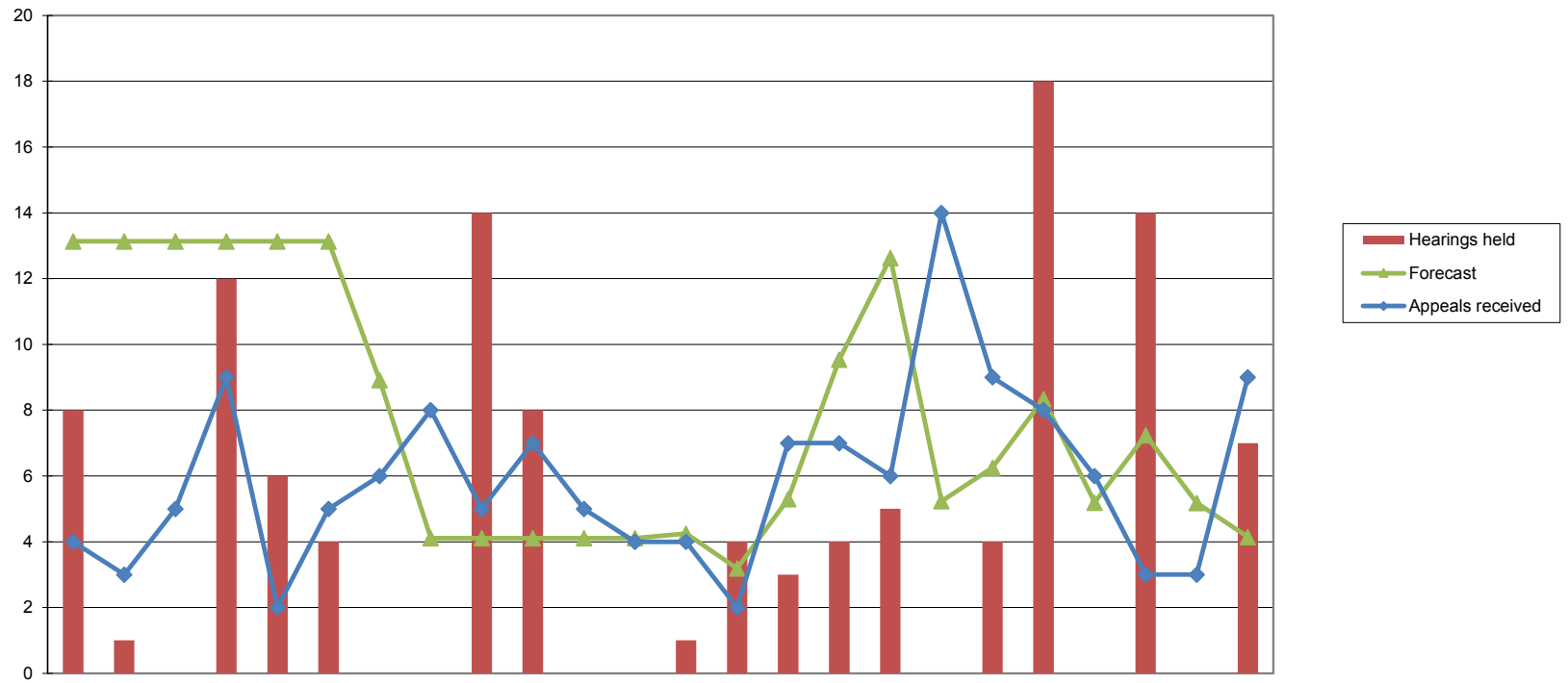
Final hearings: Decisions by profession April 2014 - March 2015

	Final Hearings																Total
	Caution	Conditions of Practice	No Further Action	Not Well Founded	Discontinued	NR	Not impaired	cross referred	Register entry amended	Removed (fraudulent/incorrect)	Struck off	Suspended	Consent - removed	Consent - caution	Consent - conditions	Consent - suspension	
Arts therapists	0	0	0	1	0	0	0	0	0	0	0	0	0	0	0	0	0
Biomedical scientists	3	5	1	5	0	0	0	0	0	1	1	1	0	0	0	0	
Chiropodists & podiatrists	1	1	0	3	2	0	0	0	0	1	1	1	0	0	0		
Clinical scientists	0	0	0	0	0	0	0	0	0	0	0	0	0	0	0		
Dietitians	1	0	0	1	0	0	0	0	0	0	2	0	0	0	0		
Hearing aid dispensers	0	0	0	1	0	0	0	0	0	1	1	1	0	0	0		
Occupational therapists	4	2	0	4	2	0	0	0	0	4	3	2	0	0	0		
ODPs	4	2	1	4	0	0	0	0	0	4	4	0	0	0	0		
Orthoptists	0	0	0	0	0	0	0	0	0	0	0	0	0	0	0		
Paramedics	4	1	0	9	0	0	0	0	1	9	15	10	0	0	0		
Physiotherapists	4	7	1	5	0	0	0	0	0	9	3	0	0	0	0		
Practitioner psychologists	0	3	0	3	1	0	0	0	1	3	3	1	0	0	0		
Prosthetists & orthotists	2	0	0	0	0	0	0	0	0	0	0	0	0	0	0		
Radiographers	1	2	0	2	0	0	0	0	0	8	3	1	0	0	0		
Social workers	27	12	2	36	9	0	1	3	1	23	33	7	0	0	0		
SLTs	0	4	0	2	1	0	0	0	0	1	0	4	0	0	0		
Total 14/15 YTD	51	39	5	76	15	0	1	3	0	2	62	69	28	0	0	0	351
Total 13/14 YTD	36	27	6	60	9	0	1	2	0	1	52	57	20	0	0	0	269
Total 12/13 FYE	41	13	1	54	n/a	0	0	0	0	1	43	58	10	n/a	n/a	n/a	221
Total 11/12 FYE	69	29	1	68	n/a	0	0	0	0	2	56	55	7	n/a	n/a	n/a	287

Review hearings decisions by profession April 2011 - March 2015

	Review Hearings													
	Adjourned/ Part Heard	Article 30(7)	Caution	Conditions of practice	Order revoked	Not restored	Restored	Struck off	Suspension	Consent - removed	Consent - caution	Consent - conditions	Consent - suspension	Total
Arts therapists	0	0	0	0	1	0	0	0	0	0	0	0	0	1
Biomedical scientists	2	0	1	4	3	0	0	2	8	0	0	0	0	20
Chiropodists & podiatrists	0	0	0	1	2	0	0	4	2	0	0	0	0	9
Clinical scientists	0	0	0	0	0	0	0	0	0	0	0	0	0	0
Dietitians	0	0	0	1	0	0	0	0	1	0	0	0	0	2
Hearing aid dispensers	0	0	1	1	0	0	0	0	1	0	0	0	0	3
Occupational therapists	5	0	1	3	5	0	0	5	9	0	0	0	0	28
ODPs	0	0	0	1	2	0	1	2	11	0	0	0	0	17
Orthoptists	0	0	0	0	0	0	0	0	0	0	0	0	0	0
Paramedics	1	0	0	4	7	0	3	9	3	0	0	0	0	27
Physiotherapists	0	0	2	3	3	0	0	4	2	0	0	0	0	14
Practitioner psychologists	0	0	0	0	2	0	1	0	2	0	0	0	0	5
Prosthetists & orthotists	0	0	0	0	0	0	0	0	1	0	0	0	0	1
Radiographers	2	0	1	0	0	0	0	4	3	1	0	0	0	11
Social workers	1	0	0	3	5	1	0	1	5	1	0	0	0	17
SLTs	0	0	0	4	1	0	0	0	6	0	0	0	0	11
Total 14/15 YTD	11	0	6	25	31	1	5	31	54	2	0	0	0	166
Total 13/14 YTD	5	0	3	30	27	1	0	32	56	5	0	0	0	159
Total 2012/13 FYE	2	1	2	19	29	0	0	27	48	4	n/a	n/a	n/a	132
Total 2011/12 FYE	9	1	0	23	17	0	3	26	49	9	n/a	n/a	n/a	137

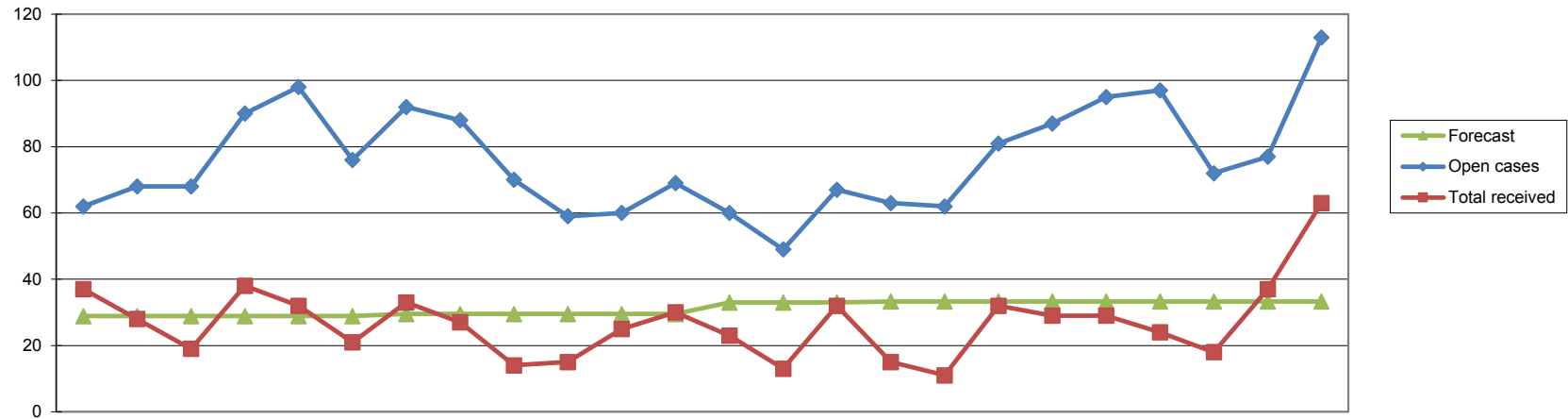
Registration Appeals April 2013 - March 2015



	2013			2014									2015											
	Apr	May	Jun	Jul	Aug	Sep	Oct	Nov	Dec	Jan	Feb	Mar	Apr	May	Jun	Jul	Aug	Sep	Oct	Nov	Dec	Jan	Feb	Mar
Forecast	13	13	13	13	13	13	9	4	4	4	4	4	4	3	5	10	13	5	6	8	5	7	5	4
Appeals received	4	3	5	9	2	5	6	8	5	7	5	4	4	2	7	7	6	14	9	8	6	3	3	9
Hearings held	8	1	0	12	6	4	0	0	14	8	0	0	1	4	3	4	5	0	4	18	0	14	0	7
Adjourned/postponed	0	0	0	1	5	0	0	0	2	0	0	0	3	1	1	0	2	0	0	2	0	3	0	0
Withdrawn	1	0	0	0	0	0	0	0	0	0	0	0	0	0	0	0	0	0	0	1	0	0	0	0
Allowed	3	0	0	5	0	0	0	0	4	2	0	0	0	2	0	2	1	0	1	7	0	3	0	1
Dismissed	4	1	0	6	2	4	0	0	7	5	0	0	1	1	1	1	2	0	3	6	0	8	0	6
Substitute decision	0	0	0	0	0	0	0	0	1	0	0	0	0	0	0	0	0	0	0	0	0	0	0	0
Remit to ETC	0	0	0	0	0	0	0	0	0	1	0	0	0	0	1	1	2	0	0	2	0	0	0	0
Current active cases	37	34	38	38	38	36	37	42	35	32	39	41	42	40	31	49	47	58	63	59	57	52	47	45

10/11 FYE	11/12 FYE	12/13 FYE	13/14 FYE	14/15 YTD
n/a	n/a	n/a	n/a	n/a
53	48	68	63	78
37	59	43	53	60
4	7	4	8	12
3	7	0	1	1
22	20	20	14	17
8	29	17	29	29
0	0	0	1	0
2	4	2	1	6

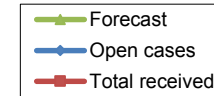
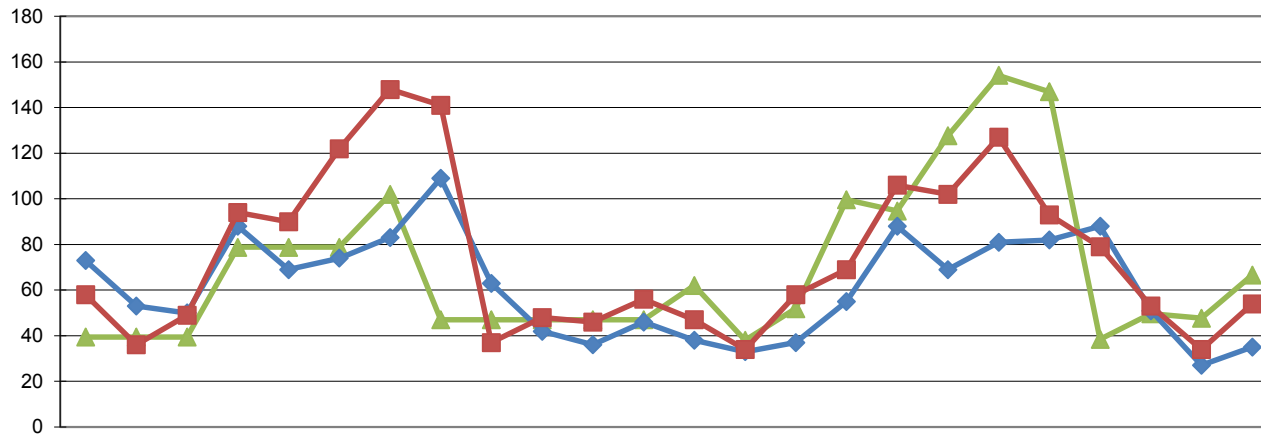
Protection of Title April 2013 - March 2015



	2013			2014												2015														
	Apr	May	Jun	Apr	May	Jun	Jul	Aug	Sep	Oct	Nov	Dec	Jan	Feb	Mar	Apr	May	Jun	Jul	Aug	Sep	Oct	Nov	Dec	Jan	Feb	Mar			
Forecast	29	29	29	29	29	29	29	29	29	30	30	30	30	30	30	33	33	33	33	33	33	33	33	33	33	33	33	33		
Public	6	7	10	21	13	5	16	15	9	5	9	16	12	4	17	8	6	20	5	14	14	12	16	22	21	35	99	132	150	
Police	2	0	0	0	3	2	1	1	0	1	0	1	0	1	1	0	0	0	0	0	0	1	0	1	0	12	23	27	11	4
HPCP	0	2	0	0	1	0	0	1	0	1	0	1	0	0	2	1	3	0	2	0	2	0	0	0	0	7	7	3	6	10
Anonymous	0	3	1	0	1	1	2	4	0	5	5	3	2	1	1	1	0	0	1	4	1	1	0	2	26	29	15	25	14	
Professional	27	10	7	11	12	10	12	6	4	3	9	8	9	7	10	5	2	12	19	9	6	5	18	37	252	172	154	119	139	
Other	2	6	1	6	2	3	2	0	1	0	2	1	0	0	1	0	0	0	2	2	0	0	2	2	7	7	3	6	10	
Total received	37	28	19	38	32	21	33	27	14	15	25	30	23	13	32	15	11	32	29	29	24	18	37	63	318	266	298	319	326	
Visits	0	0	0	0	0	0	0	0	0	0	0	0	0	0	0	0	0	0	0	0	0	0	0	0	0	0	0	0	0	0
Open cases	62	68	68	90	98	76	92	88	70	59	60	69	60	49	67	63	62	81	87	95	97	72	77	113	0	0	0	0	0	

10/11	11/12	12/13	13/14	14/15
FYE	FYE	FYE	FYE	YTD
21	35	99	132	150
12	23	27	11	4
7	7	3	6	10
26	29	15	25	14
252	172	154	119	139
318	266	298	319	326
0	0	0	0	0

Health and Character Declarations April 2013 - March 2015



		2013			2014									2015											
		Apr	May	Jun	Jul	Aug	Sep	Oct	Nov	Dec	Jan	Feb	Mar	Apr	May	Jun	Jul	Aug	Sep	Oct	Nov	Dec	Jan	Feb	Mar
Received		39	39	39	79	79	79	102	47	47	47	47	47	62	38	52	100	95	128	154	147	38	50	48	67
	Renewal	0	1	1	0	3	0	2	6	0	0	1	2	7	3	2	1	0	4	16	12	3	0	0	2
	Readmission	12	12	12	9	7	9	19	17	9	8	1	19	12	9	7	8	7	7	7	3	27	15	6	6
	Admission	46	23	36	85	80	113	127	118	28	40	44	35	28	22	49	60	99	91	104	78	49	38	28	46
	Self-referral	0	0	0	0	0	0	0	0	0	0	0	0	0	0	0	0	0	0	0	0	0	0	0	0
Total received		58	36	49	94	90	122	148	141	37	48	46	56	47	34	58	69	106	102	127	93	79	53	34	54
Considered		33	4	31	31	38	44	76	65	47	40	29	22	34	16	19	23	54	74	73	51	49	33	43	11
	Referred to FTP	0	0	0	1	0	0	0	0	0	0	0	0	0	0	0	0	0	0	1	0	0	0	0	0
	Admission rejected	2	0	6	0	1	2	0	0	0	0	0	0	0	2	0	1	2	3	0	1	1	3	7	4
	Readmission rejected	0	0	0	2	3	0	1	3	2	3	2	2	3	0	0	0	0	0	0	0	0	0	0	0
	Renewal rejected	0	0	0	0	0	0	0	0	0	0	0	0	0	0	1	0	0	0	0	0	0	0	0	0
	Not referred to FTP	0	0	0	0	0	0	0	0	0	0	0	0	0	0	0	0	0	0	0	0	0	0	0	0
	Admission accepted	31	4	25	25	31	42	75	62	45	37	27	20	31	14	18	22	52	71	72	50	46	30	36	7
	Readmission accepted	0	0	0	3	3	0	0	0	0	0	0	0	0	0	0	0	0	0	0	0	0	0	0	0
	Renewal accepted	0	0	0	0	0	0	0	0	0	0	0	0	0	0	0	0	0	0	0	0	0	0	0	0
Open cases		73	53	50	88	69	74	83	109	63	42	36	46	38	33	37	55	88	69	81	82	88	51	27	35

10/11	11/12	12/13	13/14	14/15
FYE	FYE	FYE	FYE	YTD
N/A	N/a	N/a	692	977
4	8	40	16	50
74	51	124	134	114
334	356	740	775	692
149	0	1	0	0
561	415	905	925	856
461	322	491	460	480
60	15	0	1	1
7	6	28	11	24
14	6	2	18	3
0	0	1	0	1
87	13	3	0	0
247	256	453	424	449
45	23	2	6	0
1	2	2	0	0

Suitability Scheme August 2012 - March 2015

	2012			2013						2014						2015						12/13 FYE	13/14 FYE	14/15 YTD												
	Aug	Sep	Oct	Nov	Dec	Jan	Feb	Mar	Apr	May	Jun	Jul	Aug	Sep	Oct	Nov	Dec	Jan	Feb	Mar	Apr				May	Jun	Jul	Aug	Sep	Oct	Nov	Dec	Jan	Feb	Mar	
Total received	16	10	0	1	2	0	5	0	0	1	0	1	1	2	3	0	0	1	1	4	3	1	1	3	1	1	0	0	0	0	0	0	0	34	14	10
Considered by assessment panel	0	0	0	0	0	0	0	0	0	0	0	0	0	0	0	0	0	0	0	0	0	0	0	0	0	1	0	0	0	0	0	0	0	0	0	1
Considered by adjudicator	0	0	0	0	0	0	0	0	0	0	0	0	0	0	0	0	0	0	1	0	0	0	0	0	0	0	0	0	0	0	0	0	0	0	1	0
Added to prohibited list	0	7	0	0	0	0	0	0	0	0	0	0	0	0	0	0	0	0	1	0	0	0	0	0	0	0	0	0	0	0	0	0	0	0	0	0
Open cases					n/a				9	9	5	6	7	9	12	12	12	11	11	13	17	15	7	10	9	9	8	8	8	8	6	6				

Miscellaneous (MIS) cases April 2013 - March 2015

	2013			2014									2015											
	Apr	May	Jun	Jul	Aug	Sep	Oct	Nov	Dec	Jan	Feb	Mar	Apr	May	Jun	Jul	Aug	Sep	Oct	Nov	Dec	Jan	Feb	Mar
Cases received	102	97	73	120	135	87	91	90	70	66	66	78	86	65	83	71	54	73	97	68	57	48	59	53
Cases closed	130	81	94	106	159	73	110	71	73	85	72	83	88	80	79	70	71	92	77	66	53	62	47	66
Cases open	40	69	67	106	82	96	77	96	93	74	68	63	61	46	50	51	53	52	72	74	78	64	76	63

13/14	14/15
FYE	YTD
1,075	814
1,988	851

Cases at judicial review or high court/court of sheriff stage April 2013 - March 2015

	2013			2014									2015									13/14	14/15				
	Apr	May	Jun	Jul	Aug	Sep	Oct	Nov	Dec	Jan	Feb	Mar	Apr	May	Jun	Jul	Aug	Sep	Oct	Nov	Dec	Jan	Feb	Mar	FYE	YTD	
Judicial review - received	0	0	1	0	0	0	0	0	0	0	1	0	2	0	1	0	2	0	0	0	0	0	0	0	2	5	
Judicial review - open	2	2	3	2	1	1	1	1	1	1	1	2	0	4	3	4	4	6	6	4	6	4	2	2	1		
High court - PSA received	0	0	0	0	0	0	0	0	1	0	2	0	0	1	1	1	0	1	0	0	0	0	1	0	3	5	
High court - PSA open	3	3	0	0	0	0	0	0	1	1	3	2	1	2	3	4	2	3	3	2	2	1	2	2			
High court - Registrant received	0	0	0	0	0	0	3	3	0	0	1	0	1	1	0	1	2	0	0	0	0	0	0	0	7	5	
High Court - Registrant open	1	1	0	0	0	0	3	6	6	6	5	5	5	6	6	7	8	8	8	8	6	6	5	1			
IO extension application at High Court	0	0	0	1	0	0	2	2	0	0	0	0	0	2	1	0	0	0	2	1	0	0	5	3	5	5	
Registration appeals at County Court	0	0	0	0	0	0	1	0	0	0	1	0	0	0	0	0	0	0	0	0	0	0	0	0	2	0	

Month	Number of Cases	Commentary
March	0	The amount of open High Court cases is the lowest since October 2013
February	1	We were notified of the intention to appeal one case by Professional Standards Authority
January	0	No new High Court activity received in January

Complaints relating to FTP cases or service April 2012 - March 2015

	2012			2013									2014									2015									12/13	13/14	14/15						
	Apr	May	Jun	Jul	Aug	Sep	Oct	Nov	Dec	Jan	Feb	Mar	Apr	May	Jun	Jul	Aug	Sep	Oct	Nov	Dec	Jan	Feb	Mar	Apr	May	Jun	Jul	Aug	Sep	Oct	Nov	Dec	Jan	Feb	Mar	FYE	YTD	YTD
Complaints received	N/A	N/A	4	7	6	6	13	16	11	15	17	8	8	17	14	20	18	15	17	23	12	15	7	9	13	16	9	23	18	19	17	9	17	13	13	19	103	175	186
Complaints responded to	N/A	N/A	1	4	2	15	10	18	12	10	21	8	7	10	15	12	26	14	13	20	18	13	10	11	11	17	16	14	19	15	8	4	12	17	9	20	101	169	162
Open complaints	N/A	N/A	3	6	10	1	3	1	0	5	1	1	2	9	9	17	9	10	14	12	7	9	6	4	6	5	0	9	8	12	9	5	9	8	12	11			

Complaints common issues

Month	Commentary
March	20 complaints were responded to with an average of 18 and median of 14 days. Ten related to service (ftp) and two related to service from KN. Four regarded pre ICP decisions and three related to ICP decisions. There was one which was in relation to multiple concerns involving 3 cases. The response time this month has been quite high. This is due to high workloads and a issue with a process on the CMS system which has now been changed.
February	9 complaints were responded to with an average of 11 and median of 10 days. Five of these related to service (ftp), two related to investigation, one related to ICP decision and one regarding pre ICP decision.
January	17 complaints were responded to with an average of 11 and median of 12 days. Five of these related to PreICP or ICP decisions. Four related to service and four related to communication from CM and the lack of correspondence from Case Manager about the progress of the case. One had multiple concerns about the final hearing and one complaint about the final hearing decision. There were two complaints regarding breach of confidentiality and concerns about personal and private information being sent out.

GSCC transfer cases August 2012 - March 2015

	2012			2013						2014												2015			12/13	13/14	13/14									
	Aug	Sep	Oct	Nov	Dec	Jan	Feb	Mar	Apr	May	Jun	Jul	Aug	Sep	Oct	Nov	Dec	Jan	Feb	Mar	Apr	May	Jun	Jul	Aug	Sep	Oct	Nov	Dec	Jan	Feb	Mar	FYE	FYE	YTD	
Open Cases pre-ICP / Enquiry	N/A	115	94	74	62	52	36	23	51	45	33	27	25	23	18	13	11	10	7	5	4	4	4	3	3	3	3	3	5	1	1	1				
Cases closed pre-ICP	13	N/A	N/A	N/A	6	1	7	6	5	2	1	0	1	0	1	1	1	0	3	1	1	0	0	0	0	0	0	0	0	0	0	0				
Open post ICP cases	N/A	83	80	68	58	54	46	42	84	80	75	76	70	63	57	54	52	43	36	23	19	18	17	15	12	12	12	12	10	14	14	14				
ICP considerations																																				
Cases heard at ICP	0	17	23	24	19	11	17	12	6	8	13	5	5	1	4	3	1	2	3	1	1	0	0	2	0	0	0	0	0	4	0	0	123	52	7	
Cases concluded	0	15	22	24	19	11	17	12	4	7	11	5	5	1	4	3	1	2	3	1	1	0	0	2	0	0	0	0	0	4	0	0	120	47	7	
Case to answer	0	14	19	23	16	10	7	11	2	5	3	4	5	1	4	3	1	2	2	1	1	0	0	1	0	0	0	0	0	4	0	0	100	33	6	
No Case to Answer	0	1	3	1	3	1	10	1	2	2	8	1	0	0	0	0	0	0	1	0	0	0	0	1	0	0	0	0	0	0	0	0	0	20	14	1
% CTA	0	93	86	96	84	91	41	92	40	71	27	80	100	100	100	100	100	100	67	100	100	0	0	50	0	0	0	0	100	0	0	83	70	250		
Final Hearings																																				
Final hearing cases heard	0	0	0	0	1	2	3	18	8	7	12	8	10	6	15	10	6	11	9	17	0	2	4	4	2	3	0	1	0	0	0	1	24	119	17	
Adjourned / cancelled / postponed	0	0	0	0	0	0	0	4	7	0	2	2	3	0	5	0	0	2	0	3	0	0	2	0	0	1	0	0	0	0	0	0	4	24	3	
Caution	0	0	0	0	0	0	0	1	2	0	5	2	1	1	0	0	1	0	1	3	0	1	0	0	0	0	0	1	0	0	0	0	1	16	2	
Conditions of practice	0	0	0	0	0	0	0	1	1	1	0	1	1	1	0	0	0	0	1	1	0	0	0	1	1	2	0	0	0	0	0	0	1	7	4	
No further action	0	0	0	0	0	0	0	0	2	0	0	0	0	0	0	0	0	0	0	0	0	0	0	0	0	0	0	0	0	0	0	0	0	2	0	
Not well founded	0	0	0	0	0	0	0	1	7	2	0	0	1	2	3	0	1	1	0	2	0	0	0	1	0	0	0	0	0	0	0	0	1	15	1	
Part heard	0	0	0	0	0	0	0	0	3	0	2	0	0	0	0	0	2	0	1	0	0	0	0	1	0	0	0	0	0	0	0	0	0	8	1	
Referred to other committee	0	0	0	0	0	0	0	0	1	0	0	0	0	0	0	0	0	0	0	0	0	0	0	0	0	0	0	0	0	0	0	0	0	1	0	
Removed - consent	0	0	0	0	0	0	2	1	1	2	2	0	1	0	0	1	0	0	0	1	0	0	1	0	1	0	0	0	0	0	0	0	3	8	2	
Struck off	0	0	0	0	1	2	0	4	4	1	0	2	1	1	1	1	3	5	5	2	0	0	2	1	0	0	0	0	0	0	1	7	26	4		
Suspended	0	0	0	0	0	0	1	6	8	1	1	1	2	1	6	6	1	2	2	5	0	1	0	0	0	0	0	0	0	0	0	7	36	1		

Review cases																																			
Review cases heard	2	2	3	4	1	1	1	0	0	1	1	2	0	1	0	0	1	3	3	1	8	4	2	2	5	1	9	0	2	5	6	7	14	13	51
Adjourned/Part Heard	0	0	0	1	0	0	0	0	0	0	0	0	0	0	0	0	0	0	0	1	1	1	0	0	0	0	2	1	0	0	1	1	1	1	7
Article 30(7)	0	0	0	0	0	0	0	0	0	0	0	0	0	0	0	0	0	0	0	0	0	0	0	0	0	0	0	0	0	0	0	0	0	0	0
Caution continued	0	0	0	0	0	0	0	0	0	0	1	0	0	0	0	0	0	0	0	0	0	0	0	0	0	0	0	0	0	0	0	0	0	1	0
Conditions continued	0	0	0	2	1	1	1	0	0	1	0	0	0	0	0	0	0	0	0	0	0	0	0	1	1	1	0	0	1	0	1	1	5	1	6
Conditions revoked	0	0	2	0	0	0	0	0	0	0	0	0	0	0	0	0	0	0	0	0	0	0	0	0	0	0	0	0	0	1	1	0	2	0	2
Conditions revoked caution imposed	0	0	0	0	0	0	0	0	0	0	0	1	0	0	0	0	0	0	0	0	0	0	0	0	0	0	0	0	0	0	0	0	0	1	0
Conditions revoked suspension imposed	0	0	0	0	0	0	0	0	0	0	0	0	0	0	0	0	0	0	0	0	0	1	0	0	0	0	0	0	0	0	0	0	0	0	1
Not restored	0	0	0	0	0	0	0	0	0	0	0	0	0	0	0	0	0	0	0	0	0	0	0	0	0	0	0	0	0	0	0	0	0	0	0
Restored	0	0	0	0	0	0	0	0	0	0	0	0	0	0	0	0	0	0	0	0	0	0	0	0	0	0	0	0	0	0	0	0	0	0	0
Struck off	0	0	0	0	0	0	0	0	0	0	0	0	1	1	0	0	0	1	1	0	3	2	0	0	1	0	1	1	0	2	2	0	0	4	12
Suspension continued	2	1	1	1	0	0	0	0	0	0	0	1	1	0	0	0	0	2	1	0	2	0	1	1	2	0	5	4	1	1	0	3	5	5	20
Suspension revoked	0	1	0	0	0	0	0	0	0	0	0	0	0	0	0	0	0	0	0	0	2	0	0	0	0	0	0	0	0	0	1	1	1	0	4
Suspension revoked caution imposed	0	0	0	0	0	0	0	0	0	0	0	0	0	0	0	0	1	0	0	0	0	0	0	0	0	0	0	0	0	0	0	0	0	1	0
Suspension revoked conditions imposed	0	0	0	0	0	0	0	0	0	0	0	0	1	0	0	0	0	0	1	0	0	0	1	0	1	0	0	0	0	1	0	1	0	2	4
Consent	0	0	0	0	0	0	0	0	0	0	0	0	0	0	0	0	0	0	0	0	0	0	0	0	0	0	0	0	0	0	0	0	0	0	0
Interim Orders heard																																			
IOA	13	6	4	3	0	6	1	0	1	0	0	0	1	0	0	0	0	0	1	0	0	0	0	0	0	0	0	0	0	0	0	0	33	3	0
IOR	0	0	1	0	1	1	10	0	7	8	3	9	5	2	9	2	4	6	2	0	1	0	0	1	0	0	1	0	1	0	1	0	13	57	5

Summary of cases received:

- Total cases reviewed - 495
- Pre-ICP – 217
- Cases subject to interim order - 14
- Suspension/conditional registration – 45
- Cautions – 40
- Character cases - 15
- Students - 12

Open cases pre-ICP

Month	Total to date	Total this month	Commentary
March	217	1	The remaining preICP case is awaiting the results of a Police investigation, and is unlikely to be sent to ICP before the summer.
February	217	1	The remaining preICP case is awaiting the results of a Police investigation, and is unlikely to be sent to ICP before the summer.
January	217	1	The remaining preICP case is awaiting the results of a Police investigation, and is unlikely to be sent to ICP before the summer.

PSA learning points received April 2013 - March 2015

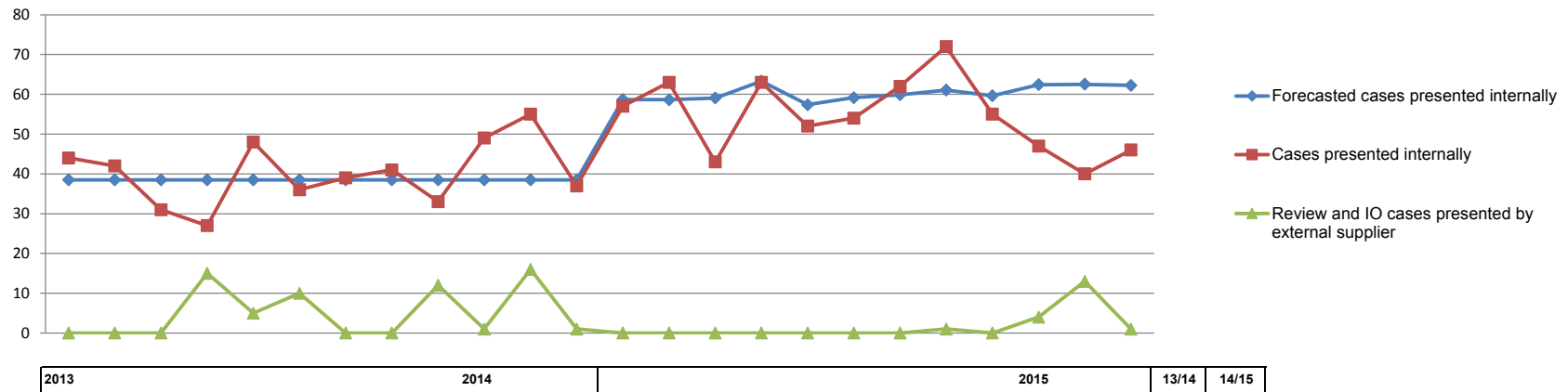
	2013			2014									2015											
	Apr	May	Jun	Jul	Aug	Sep	Oct	Nov	Dec	Jan	Feb	Mar	Apr	May	Jun	Jul	Aug	Sep	Oct	Nov	Dec	Jan	Feb	Mar
Learning points received	9	11	20	6	15	8	8	1	19	21	0	15	11	13	9	0	0	0	0	48	0	0	0	0
Reviewable cases heard that month	41	45	46	49	55	40	47	46	36	50	42	33	48	55	42	46	30	42	50	69	40	69	43	59
Reviewable cases in previous 3 months	n/a	n/a	n/a	132	140	150	144	142	133	129	132	128	125	123	145	143	118	118	122	161	159	178	152	171

12/13	13/14	14/15
FYE	FYE	YTD
104	133	81

Issues arising and learning points

Month	Commentary
March	* There were no learning points received in March
February	* There were no learning points received in January
January	* There were no learning points received in January

Internal operational management commentary April 2013 - March 2015



	2013			2014									2015									13/14	14/15			
	Apr	May	Jun	Jul	Aug	Sep	Oct	Nov	Dec	Jan	Feb	Mar	Apr	May	Jun	Jul	Aug	Sep	Oct	Nov	Dec	Jan	Feb	Mar	FYE	YTD
Forecasted cases presented internally	39	39	39	39	39	39	39	39	39	39	39	39	59	59	59	63	57	59	60	61	60	62	63	62	462	724
Cases presented internally	44	42	31	27	48	36	39	41	33	49	55	37	57	63	43	63	52	54	62	72	55	47	40	46	482	654
Review and IO cases presented by external supplier	0	0	0	15	5	10	0	0	12	1	16	1	0	0	0	0	0	0	0	1	0	4	13	1	60	19

FTP Internal Measuring Tools Report 2013-15

Fitness to practise		2013												2014												2015												Average 12/13	Average 13/14	Average 14/15 YTD	
		Target	Apr	May	Jun	Jul	Aug	Sep	Oct	Nov	Dec	Jan	Feb	Mar	Apr	May	Jun	Jul	Aug	Sep	Oct	Nov	Dec	Jan	Feb	Mar	Apr	May	Jun	Jul	Aug	Sep	Oct	Nov	Dec	Jan	Feb	Mar			
From date allegation made to notifying registrant of full allegation																																									
Cases obs'ed each month	Total cases obs'ed	64 / 129	60	59	57	70	79	68	76	68	36	87	75	74	75	74	76	66	70	75	66	76	53	64	75	70	75	74	76	66	70	75	66	76	53	64	75	70	48	67	70
	% within 5 months	73%	92	83	93	86	91	94	91	94	86	89	89	86	88	81	87	88	87	81	83	84	68	75	78	86	88	81	87	88	87	81	83	84	68	75	78	86	85	90	82
	% within 7 months	85%	93	86	98	93	92	94	92	96	89	94	93	89	91	86	92	92	94	87	89	92	79	88	89	93	91	86	92	92	94	87	89	92	79	88	89	93	90	92	89
	% within 10 months	95%	95	92	100	96	96	96	95	99	94	97	97	96	95	96	96	98	94	92	92	95	91	94	96	97	95	96	96	98	94	92	92	95	91	94	96	97	94	96	95
	% over 10 months	5%	5	8	0	4	4	4	5	1	6	3	3	4	5	4	4	2	6	8	8	5	9	4	4	3	5	4	4	2	6	8	8	5	9	4	4	3	6	4	5
	Mean months	3.5	2	3	1	2	2	1	2	2	3	2	2	2	2	2	2	2	2	3	3	3	4	4	3	2	2	2	2	2	2	3	3	3	4	4	3	2	3	2	2
Median months	2.5	1	1	1	1	1	1	1	1	1	1	1	1	1	1	1	1	1	1	1	1	1	1	1	1	1	1	1	1	1	1	1	1	1	1	2	1	1	2	1	1
Cases yet to be obs'ed	Total cases to be obs'ed		94	93	99	98	105	121	123	107	109	105	101	95	88	74	70	73	81	72	73	70	46	66	77	77	88	74	70	73	81	72	73	70	46	66	77	77	118	104	72
	% of cases 5 months and under		66	63	65	69	73	74	72	64	62	59	58	61	60	57	61	56	58	61	62	57	74	56	79	58	60	57	61	56	58	61	62	57	74	56	79	58	60	66	62
	% 6-7 months		2	10	11	5	7	8	10	15	15	13	11	14	11	12	9	10	12	10	8	11	11	12	10	13	11	12	9	10	12	10	8	11	11	12	10	13	14	10	11
	% 8-10 months		7	4	2	8	8	7	6	10	12	16	15	9	10	9	10	11	7	10	10	11	6	9	6	6	10	9	10	11	7	10	10	11	6	9	6	6	9	9	9
	% over 10 months		25	23	21	17	12	11	12	11	11	11	16	16	20	12	20	23	22	19	20	24	9	23	4	22	20	12	20	23	22	19	20	24	9	23	4	22	22	16	18
From ICP to final hearing																																									
Total cases concluded	Total cases concluded	70%	21	26	28	30	25	20	25	21	18	26	14	13	33	30	26	29	12	28	37	25	30	27	32	42	33	30	26	29	12	28	37	25	30	27	32	42	19	22	29
	% within 8 months		67	42	57	43	32	65	32	33	44	23	50	54	42	27	50	38	33	32	46	36	50	37	25	36	42	27	50	38	33	32	46	36	50	37	25	36	57	45	38
	% within 10 months		71	62	75	63	60	90	64	62	56	38	86	69	61	73	85	48	58	54	68	44	60	56	53	52	61	73	85	48	58	54	68	44	60	56	53	52	44	66	59
	% over 10 months		29	38	25	37	40	10	36	38	44	38	14	31	39	27	15	52	42	44	32	56	40	44	44	48	39	27	15	52	42	44	32	56	40	44	44	48	20	32	40
Currently awaiting hearing																																									
Total cases awaiting hearing			260	267	268	255	273	287	298	309	321	322	336	350	354	368	381	397	403	427	418	418	420	426	437	428	354	368	381	397	403	427	418	418	420	426	437	428			
Length of time from receipt to acknowledgement	5 days		n/a	n/a	n/a	3	2	2	2	2	2	2	2	2	2	2	2	2	2	2	2	2	2	2	2	2	2	2	2	2	2	2	2	2	2	2	2	2	n/a	2	2

Health and character

From receipt of declaration on application to the register to Panel

Case heard or closed	Total cases heard or closed % within 1 month		90	78	51	75	77	97	134	121	57	32	25	37	21	14	19	36	43	49	38	43	67	59	67	34	
	95%	90	79	76	84	83	85	83	85	80	66	54	66	44	48	15	52	41	48	29	46	68	57	75	85		
Cases waiting to be heard	Total cases waiting to be heard % over 1 month old		73	53	50	88	69	74	83	77	63	42	27	44	6	33	41	14	14	12	77	83	55	51	27	35	
		14	23	36	15	33	23	9	54	52	31	20	20	15	30	22	26	15	11	6	28	34	45	44	14		
	Length of time from receipt to acknowledgement (median)	5 days	n/a	n/a	n/a	5	4	4	4	5	6	4	2	7	7	8	7	1	5	1	1	1	1	8	1	1	2.5

47	73	21
87	78	44
31	62	6
21	28	15
n/a	5	7

Registration Appeals

From receipt of notice of appeal to hearing	% within 6 months																										
	70%	74	71	70	42	57	0	0	0	58	12	0	0	25	50	0	25	25	0	50	44	0	50	0	71		
	% within 9 months	90%	Not previously provided	Not previously provided	93	58	86	100	0	0	75	25	0	0	0	0	0	0	0	0	25	11	0	64	0	86	
	Length of time from receipt to acknowledgement (median)	5 days	n/a	n/a	n/a	11	6	10	2	3	10	6	5	6	2	4	4	3.5	3.5	14	6	2.5	4.5	7	7	5	

86	32	25
98	44	0
n/a	7	

Protection of title

	Length of time from receipt to acknowledgement	5 days	n/a	n/a	n/a	6	9	11	6	8	7	8	8	8	9	15	8	6	11	9	7	6	13.5	6.5	2	2
--	--	--------	-----	-----	-----	---	---	----	---	---	---	---	---	---	---	----	---	---	----	---	---	---	------	-----	---	---

n/a	8	9
-----	---	---

MIS

	Length of time from receipt to acknowledgement	5 days	3	3	5	7	7	5	6	4	5	2	1	2	3	1	3	3	3	2	3	5	4	3	4	5
--	--	--------	---	---	---	---	---	---	---	---	---	---	---	---	---	---	---	---	---	---	---	---	---	---	---	---

n/a	4	3
-----	---	---

CMS action monitoring and NetRegulate Status checking outcomes

CMS Actions - outstanding actions (Case Management)

Month	Number	Commentary
March	2	There were two actions assigned to an historic user in CMS in March
February	2	There were two actions assigned to an historic user in CMS in February
January	2	There were two actions assigned to an historic user in CMS in January

CMS actions - overdue actions (Case Management)

Month	Number	Commentary
March	1121	* The number of overdue actions increased in March. This is due to the end of year focus being on obs and case closures. It is expected that the numbers will stabilise in April.
February	1036	* The number of overdue actions has continued to decline in February, which is evidence of the effectiveness of deploying temporary Case Managers to assist with tasks such as initial risk assessments and letters on allocation of new cases.
January	1049	* The number of overdue actions in January has decreased slightly since last month. This is in part explained by the new strategy in deploying the Temps to assist with specific case management actions.

CMS Actions - outstanding actions (Adjudication)

Month	Number	Commentary
March	19	* Outstanding actions are used to schedule hearings on the adjudications team and do not usually relate to work that is pending
February	13	* Outstanding actions are used to schedule hearings on the adjudications team and do not usually relate to work that is pending
January	14	* Outstanding actions are used to schedule hearings on the adjudications team and do not usually relate to work that is pending

CMS actions - overdue actions (Adjudication)

Month	Number	Commentary
March	20	*There are 20 overdue actions relating to Adjudications activity *These actions concern hearing follow up and additional hearing correspondence related to preliminary hearings and witness/registrant enquiries * All compliants related to adjudications work were replied to within the required timescales in March
February	15	*There are 15 overdue actions relating to Adjudications activity *These actions concern hearing follow up and additional hearing correspondence related to preliminary hearings and witness/registrant enquiries * All compliants related to adjudications work were replied to within the required timescales in February
January	19	*There are 19overdue actions relating to Adjudications activity *These actions concern hearing follow up and additional hearing correspondence related to preliminary hearing issues * All compliants related to adjudications work were replied to within the required timescales in January

Net Regulate status checks

Month	Number of Issues	Commentary
March	0	There continue to be no issues and the checking process is identifying any corrections.
February	0	There continue to be no issues and the checking process is identifying any corrections.
January	0	There continue to be no issues and the checking process is identifying any corrections.

Fitness to Practise Department

Length of Time Pack

John Barwick, Director of Fitness to Practise
Activity in March 2015

Contents	Page
Overview of service standards for cases	50-51
Analysis of age of cases that met Standard of Acceptance in period April to October 2014	52
Analysis of age of cases closed PreICP, at time of closure in the period April to October 2014, measured from receipt of original complaint	53
Snapshot of age of Enquiry cases since receipt (correct as of 31/10/14)	54
Length of Time Open Pre ICP April 2013 - March 2015	55-56
Analysis of ages of cases closed No Case To Answer in the period April to October 2014	57
Analysis of age of cases at the stage of Investigating Committee Panel deciding there is a Case To Answer	58
Analysis of age of cases where an Investigating Panel reach a decision (cases requiring further information are excluded)	59
Length time: Cases Inv Committee (excluding further information) April 2010 - March 20115	60
Length of Time : Age of Cases Post ICP April 2013-March 2015	61
Allegations made - Investigating Panel (concluded final hearing cases) April 2010 - March 2015	62
Length of Time Investigating Panel - Case Conclusion (concluded final hearing cases) April 2010 - March 2015	63
Length of Time: Allegations made - conclusion of final hearing 2009/10 - 2013/14	64
Analysis of age of cases where a final hearing has concluded in the period April to October 2014	65
Comparison of age of cases from receipt to conclusion of final hearing, for 2013-14 and April to October 2014	66
Snapshot of age of Post ICP cases (correct at 31/10/14)	67
Analysis of final hearing sanctions by age at each stage, for the periods 2013-14 and April to October 2014	68
Age of concluded final hearings at each stage by complaint source, for the periods 2013-14 and April to October 2014	69
Comparison of age of concluded final hearings at each stage, by representation, for the periods 2013-14 and April to October 2014	70
Analysis of length of time to close cases at each stage and combined	71

Summary of current caseload length of time against standards

To identify any required case escalation activities, all cases are assessed against the following progression standards
 Those cases outside the standard have an escalation plan and owner, and are assigned a red, amber or green status.
 Red cases are identified as needing an urgent or higher level intervention than previously tried
 Amber cases are identified as having potential for more urgent or higher level intervention if the current approach does not progress matters within a defined timescale
 Green cases may no longer be within their service standard timescale, but are progressing with no further concerns.
 Trends in red, amber, green cases are reported at the weekly FTP managers' meeting.

From	To	Timescale	Stage
Receipt	SOA	2 months	Enquiry
SOA	Obs	3 months	PreICP
Obs	ICP	3 months	PreICP
ICP	RTF	3 months	PostICP
RTF	Hearing	4 months	PostICP
		15 months	

Enquiry cases

Age since receipt	Number	%	Cumulative %
0 to 2 mths	439	37.6	37.6
3 to 4 mths	242	20.7	58.3
5 to 7 mths	219	18.7	77.0
8 to 12 mths	181	15.5	92.5
13 to 15 mths	49	4.2	96.7
16 to 20 mths	27	2.3	99.0
21 to 24 mths	8	0.7	99.7
>24 mths	4	0.3	100.0
		1169	100.0

Post ICP cases (receipt to date)

Age since receipt	Number	%	Cumulative %
0 to 7 mths	35	8.2	8.2
8 to 12 mths	102	23.8	32.0
13 to 15 mths	58	13.6	45.6
16 to 20 mths	99	23.1	68.7
21 to 24 mths	59	13.8	82.5
>24 mths	75	17.5	100.0
		428	100.0

PreICP cases

Age since receipt	Number	%	Cumulative %
0 to 2 mths	17	6.3	6.3
3 to 4 mths	36	13.2	19.5
5 to 7 mths	61	22.4	41.9
8 to 12 mths	86	31.6	73.5
13 to 15 mths	25	9.2	82.7
16 to 20 mths	24	8.8	91.5
21 to 24 mths	9	3.3	94.9
>24 mths	14	5.1	100.0
		272	100.0

Post ICP cases (ICP to date)

Age since ICP	Number	%	Cumulative %
0 to 5 mths	186	43.5	43.5
6 to 7 mths	67	15.7	59.1
8 to 12 mths	94	22.0	81.1
13 to 15 mths	27	6.3	87.4
16 to 20 mths	34	7.9	95.3
21 to 24 mths	8	1.9	97.2
>24 mths	12	2.8	100.0
		428	100.0

Commentary

Month	Commentary
Mar	11 cases were reviewed at the monthly Case Progression Conference in March.
Feb	10 of the priority cases (based on age or complexity) were reviewed in February.
Jan	All cases with outstanding actions were reviewed at the Case Progression conference. Some outstanding actions have been delegated to temporary staff who have been trained specifically in this area, with the progression audited by the Quality Compliance Team. These cases are now reviewed on a monthly cycle.

Analysis of age of cases that met Standard of Acceptance in period April 2014 to March 2015

Age from receipt to SOA	Number	%	Cumulative %
0 to 2 months	259	39.4	39
3 to 4 months	152	23.1	62
5 to 8 months	142	21.6	84
9 to 12 months	54	8.2	92
13 to 15 months	29	4.4	97
16 to 20 months	12	1.8	98
21 to 24 months	7	1.1	100
>24 months	3	0.5	100
Mean Months	5		
Median Months	3		
Total Open Cases	658		

Month	Commentary
March	There are no changes in the mean or median times since November 2014
February	There are no changes in the mean or median times since November 2014
January	There are no changes in the mean or median times since November 2014

Analysis of age of cases closed PreICP, at time of closure in the period April 2014 to March 2015, measured from receipt of original complaint

Age of case closed PreICP	Number	Cumulative number	%	Cumulative %
0 to 4 months	504	504	48	48
5 to 8 months	315	819	30	79
9 to 12 months	144	963	14	92
13 to 16 months	43	1006	4	97
17 to 20 months	21	1027	2	99
>20 months	15	1042	1	100
Mean Months	6			
Median Months	5			
Total Open Cases	1042			

Month	Commentary
March	There are no changes this month
February	There are no changes this month
January	There are no changes this month

Snapshot of age of Enquiry cases since receipt (correct as of 31/3/15)

Age since receipt	Number	%	Cumulative %
0 to 2 mths	439	37.6	37.6
3 to 4 mths	242	20.7	58.3
5 to 7 mths	219	18.7	77.0
8 to 12 mths	181	15.5	92.5
13 to 15 mths	49	4.2	96.7
16 to 20 mths	27	2.3	99.0
21 to 24 mths	8	0.7	99.7
>24 mths	4	0.3	100.0
	1169	100.0	

Length of Time Open Pre ICP April 2013 - March 2015

		2013												2014												2015											
Months		Apr	May	Jun	Jul	Aug	Sep	Oct	Nov	Dec	Jan	Feb	Mar	Apr	May	Jun	Jul	Aug	Sep	Oct	Nov	Dec	Jan	Feb	Mar	Apr	May	Jun	Jul	Aug	Sep	Oct	Nov	Dec	Jan	Feb	Mar
Cases awaiting ICP	0-4	155	159	163	183	206	217	229	203	178	189	192	206	198	186	185	183	187	182	185	193	175	167	170	174	198	186	185	183	187	182	185	193	175	167	170	174
	5-8	34	33	38	40	41	47	51	60	65	65	69	63	52	44	50	43	47	44	51	53	62	45	60	63	52	44	50	43	47	44	51	53	62	45	60	63
	9-12	9	12	12	8	13	14	13	18	16	20	21	24	25	25	27	23	20	16	21	23	19	27	15	14	25	25	27	23	20	16	21	23	19	27	15	14
	13-16	11	9	8	7	6	6	3	0	5	5	7	6	7	8	9	12	9	9	12	7	8	10	10	10	7	8	9	12	9	9	12	7	8	10	10	10
	17-20	2	5	7	6	5	2	1	3	3	2	3	1	2	3	5	3	4	6	5	6	4	5	6	2	2	3	5	3	4	6	5	6	4	5	6	2
	21-24	9	4	3	2	2	3	4	1	1	2	1	2	2	2	2	0	1	1	3	2	2	3	5	3	2	2	2	0	1	1	3	2	2	3	5	3
	25-28	1	2	7	9	10	3	1	1	1	1	2	1	1	1	0	2	2	2	2	0	1	1	1	2	1	1	0	2	2	2	2	0	1	1	1	2
	29-32	0	0	0	0	0	6	7	4	3	0	0	1	1	1	2	1	1	1	0	1	1	1	0	1	1	2	1	1	1	0	1	1	1	1	0	
	over 33	1	1	0	0	0	0	0	0	0	3	3	3	3	3	3	4	4	4	5	5	4	0	3	4	3	3	3	4	4	4	5	5	4	0	3	4
Open Cases Pre ICP		222	225	238	255	283	298	309	290	272	287	298	307	291	273	283	271	275	265	284	290	276	259	271	272	291	273	283	271	275	265	284	290	276	259	271	272

Commentary

Cases over 5 months pre-ICP

Month	Current month / variance	Internal Measure	Commentary
March	71%/-2%	Pre ICP - 73% 5 months old or less	The proportion of cases in this remit is on target, and we continue to look at moving cases through from Enquiry stage as part of our wider case progression work.
February	79%/+6%	Pre ICP - 73% 5 months old or less	The efforts since last month to redeploy staff and support temporary workers has increased performance in this area. This has not been at the expense of other areas as number of closures pre-ICP and ICPs have been on forecast.
January	56%/-16%	Pre ICP - 73% 5 months old or less	We have been focusing efforts on moving cases from enquiry stage to preICP. We are using temporary staff whilst we recruit and train our permanent staff.

Analysis of ages of cases closed No Case To Answer in the period April 2014 to March 2015

Number of Months	Receipt to NCTA			SOA to NCTA		
	Number	%	Cumulative	Number	%	Cumulative %
1-4	65	17	17	259	69	69
5-8	179	47	65	86	23	92
9-12	66	18	82	23	6	98
13-16	34	9	91	6	2	99
17-20	18	5	96	1	0	99
21-24	13	3	99	2	1	100
25-28	0	0	99	0	0	100
29-32	1	0	100	0	0	100
33-36	1	0	100	0	0	100
>36	0	0	100	0	0	100
Mean Months	9			4		
Median Months	9			3		
Total	377			377		

Month	Commentary
March	There is no change in the mean and median times
February	There is no change in the mean and median times
January	There is no change in the mean and median times

Source of complaint	Receipt to NCTA		SOA to NCTA	
	Mean months	Median months	Mean months	Median months
Article 22(6)/Anon	7	6	4	3
Employer	8	7	5	3
Other	7	5	4	3
Other Registrant	12	9	7	3
Police	7	3	7	3
Professional Body	12	3	4	3
Public	10	8	5	3
Self Referral	8	7	3	2

Month	Commentary
March	There are no significant changes this month
February	There are no significant changes this month
January	There are no significant changes this month

Analysis of age of cases at the stage of Investigating Committee Panel deciding there is a Case To Answer

Number of Months	Receipt to CTA			SOA to CTA		
	Number	%	Cumulative %	Number	%	Cumulative %
1-4	74	16	16	264	66	66
5-8	164	43	59	100	24	90
9-12	100	25	83	35	6	95
13-16	41	7	90	18	3	98
17-20	34	8	99	7	2	100
21-24	9	1	99	5	0	100
25-28	5	0	99	1	0	100
29-32	4	1	100	1	0	100
33-36	1	0	100	1	0	100
> 36	1	0	100	1	0	100
Mean months	9			5		
Median months	8			4		
Total number of C	433			433		

Month	Commentary
March	There is no change in the mean and median times since November 2014
February	There is no change in the mean and median times since November 2014
January	There is no change in the mean and median times since November 2014

Source of complaint	Receipt to CTA		SOA to CTA	
	Mean months	Median months	Mean months	Median months
Article 22(6)/Anon	16	5	6	4
Employer	9	8	6	4
Other	11	7	8	5
Other Registrant	10	8	6	3
Police	10	9	8	5
Professional Body	n/a	n/a	n/a	n/a
Public	9	8	5	5
Self Referral	9	9	4	3

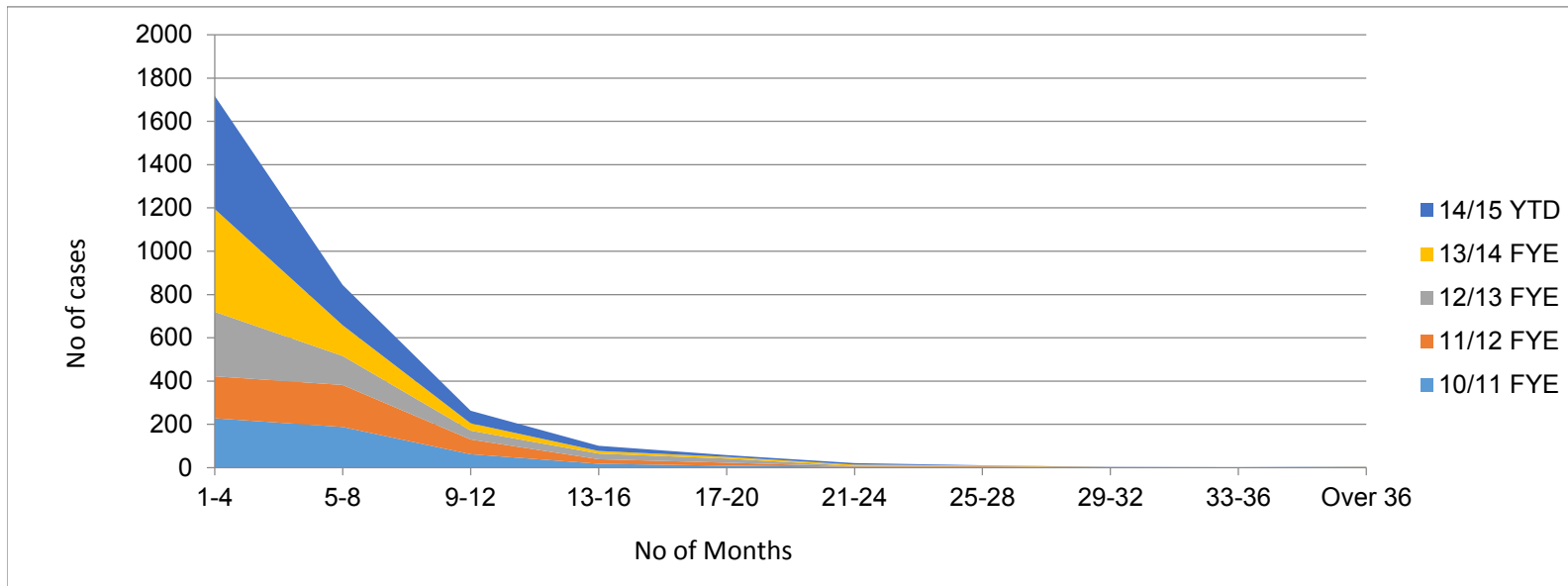
Month	Commentary
March	There are no significant changes this month
February	There are no significant changes this month
January	There are no significant changes this month

Analysis of age of cases where an Investigating Panel reach a decision from April 2014 to March 2015 (cases requiring further information are excluded)

Number of Months	Receipt to conclusion at ICP			SOA to conclusion at ICP		
	Number	%	Cumulative %	Number	%	Cumulative %
1-4	139	17	17	523	65	65
5-8	343	42	60	186	23	88
9-12	166	20	80	58	7	95
13-16	75	9	89	24	3	98
17-20	52	6	96	8	1	99
21-24	22	3	98	7	1	100
25-28	5	1	99	1	0	100
29-32	5	1	100	1	0	100
33-36	2	0	100	1	0	100
> 36	1	0	100	1	0	100
Mean months	9			5		
Median months	8			3		
Total number of Cases	810			810		

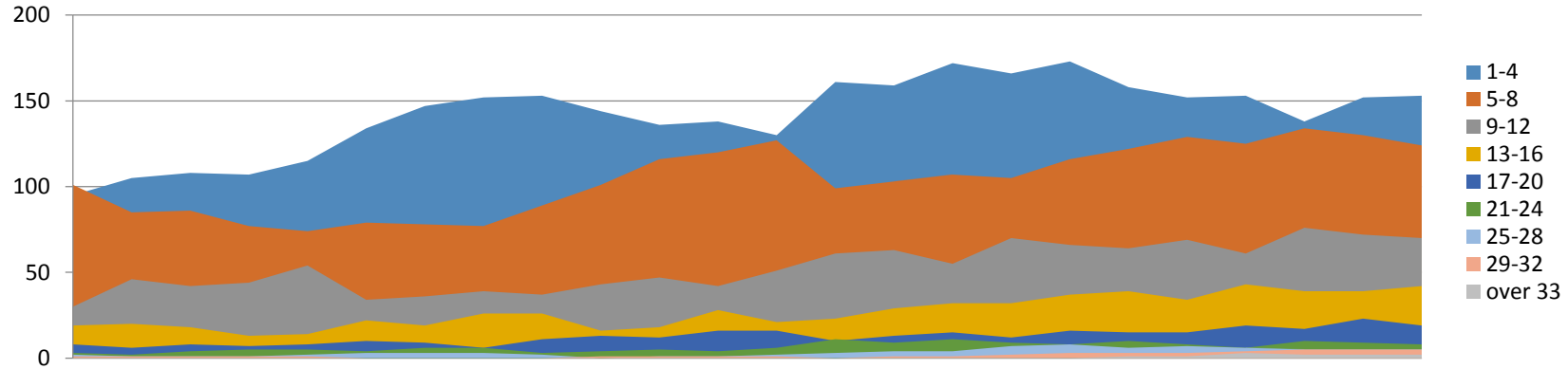
Month	Commentary
March	There are no significant changes this month
February	There are no significant changes this month
January	There are no changes since November 2014.

Length time: Cases Inv Committee (excluding further information) April 2010 - March 20115



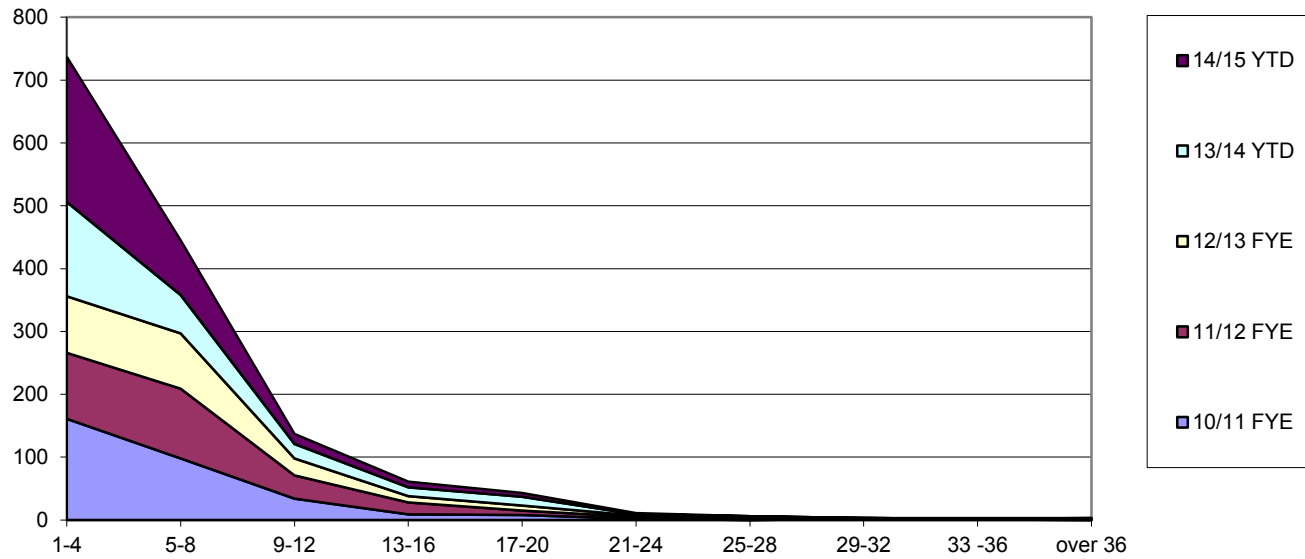
Number of Months	10/11 FYE	11/12 FYE	12/13 FYE	13/14 FYE	14/15 YTD	%	Cumulative %
1-4	228	194	298	475	523	65	65
5-8	188	194	134	142	186	23	88
9-12	62	68	41	34	58	7	95
13-16	18	21	26	12	24	3	98
17-20	9	14	19	8	8	1	99
21-24	4	2	2	6	7	1	100
25-28	2	3	2	3	1	0	100
29-32	1	1	0	0	1	0	100
33-36	0	0	0	1	1	0	100
Over 36	0	1	1	1	1	0	100
Mean Months	6	7	6	5	5		
Median Months	5	5	4	3	3		
Total Cases	512	498	523	682	810		

Length of Time : Age of Cases Post ICP April 2013-March 2015



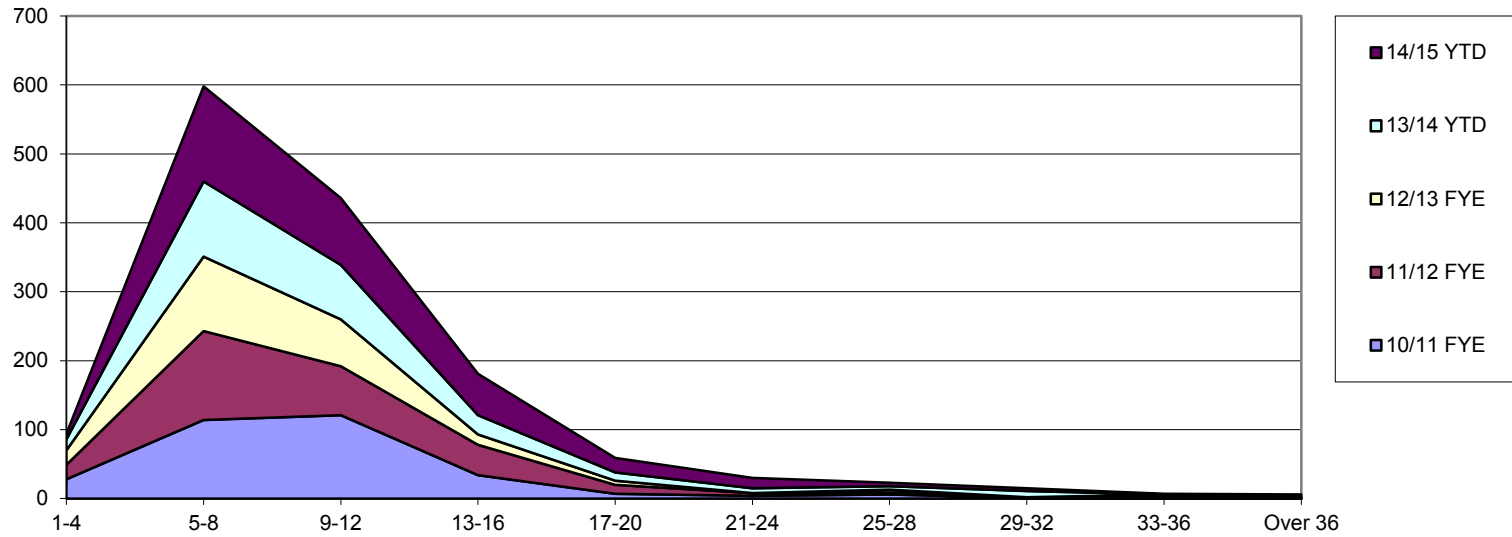
		2013			2014										2015										
Months		Apr	May	Jun	Jul	Aug	Sep	Oct	Nov	Dec	Jan	Feb	Mar	Apr	May	Jun	Jul	Aug	Sep	Oct	Nov	Dec	Jan	Feb	Mar
Cases awaiting final hearing (from ICP)	1-4	95	105	108	107	115	134	147	152	153	144	136	138	130	161	159	172	166	173	158	152	153	138	152	153
	5-8	101	85	86	77	74	79	78	77	89	101	116	120	127	99	103	107	105	116	122	129	125	134	130	124
	9-12	30	46	42	44	54	34	36	39	37	43	47	42	51	61	63	55	70	66	64	69	61	76	72	70
	13-16	19	20	18	13	14	22	19	26	26	16	18	28	21	23	29	32	32	37	39	34	43	39	39	42
	17-20	8	6	8	7	8	10	9	6	11	13	12	16	16	10	13	15	12	16	15	15	19	17	23	19
	21-24	3	2	4	5	5	4	6	6	3	4	5	4	6	11	9	11	9	8	10	8	6	10	9	8
	25-28	2	1	1	1	2	3	3	3	2	0	1	1	2	3	4	4	7	8	6	7	6	5	5	5
	29-32	1	1	1	1	1	0	0	0	0	1	1	1	1	0	1	1	2	3	3	3	4	5	5	5
	over 33	0	0	0	0	0	0	0	0	0	0	0	0	0	0	0	0	0	0	1	1	3	2	2	2
Total cases awaiting hearing		259	266	268	255	273	286	298	309	321	322	336	350	354	368	381	397	403	427	418	418	420	426	437	428
Total cases fixed this month		36	36	37	36	30	42	34	33	18	26	36	42	44	21	32	35	38	48	51	37	26	38	25	23
Cases ready to fix, but no date yet		65	60	66	80	88	83	83	74	77	95	99	91	83	95	115	127	128	123	134	145	156	175	162	179
Cases fixed previous months and awaiting hearing		88	84	72	66	62	55	58	50	52	49	72	90	90	74	73	63	84	98	115	127	123	118	121	113
Cases being prepared by external lawyers		70	86	93	73	93	106	123	152	174	152	129	127	167	166	154	151	151	161	140	138	133	128	133	136

Allegations made - Investigating Panel (concluded final hearing cases) April 2010 - March 2015



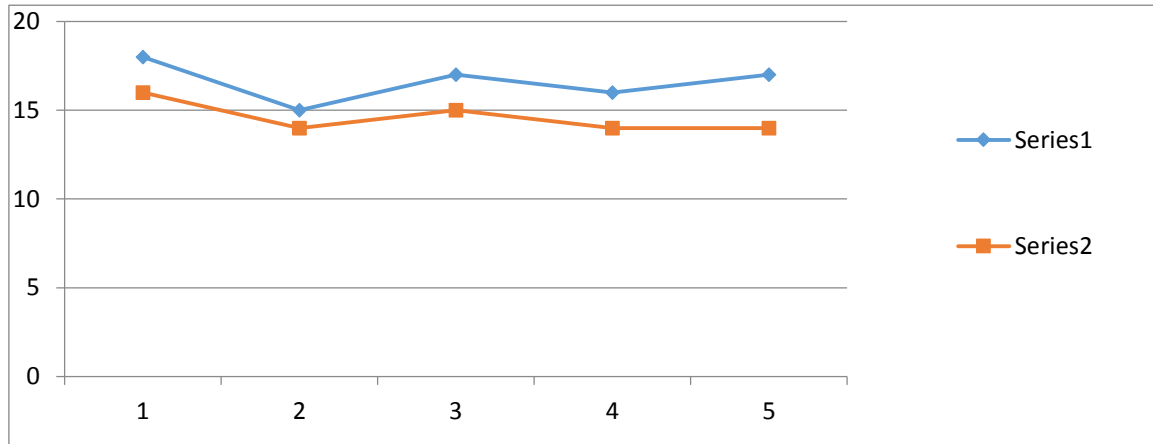
Number of Months	10/11 FYE	11/12 FYE	12/13 FYE	13/14 YTD	14/15 YTD	%	Cumulative %
1-4	161	105	90	150	231	66	66
5-8	98	111	88	61	87	25	90
9-12	34	37	27	23	16	5	95
13-16	9	19	10	14	9	3	97
17-20	8	7	8	14	6	2	99
21-24	2	3	2	2	2	1	100
25-28	0	2	2	2	0	0	100
29-32	2	1	0	0	0	0	100
33 -36	1	1	0	0	1	0	100
over 36	0	1	1	1	0	0	100
Mean Months	6	7	7	6	5		
Meadian Months	4	5	5	4	4		
Total Cases	315	287	228	267	352		

Length of Time Investigating Panel - Case Conclusion (concluded final hearing cases) April 2010 - March 2015



Number of Months	10/11 FYE	11/12 FYE	12/13 FYE	13/14 YTD	14/15 YTD	%	Cumulative %
1-4	28	21	21	16	8	2	2.3
5-8	114	129	108	109	138	39.2	41.5
9-12	121	71	68	79	97	28	69.0
13-16	34	44	15	28	60	17	86.1
17-20	7	13	6	12	21	6	92.0
21-24	4	4	0	7	15	4	96.3
25-28	6	3	4	5	5	1	99.5
29-32	1	0	1	9	4	1	99.5
33-36	0	2	4	0	1	0	99.5
Over 36	0	0	1	2	3	0.9	100.0
Mean Months	9	10	9	11	11		
Median Months	9	8	8	9	9		
Total Cases	315	287	228	267	352		

Length of Time: Allegations made - conclusion of final hearing 2009/10 - 2014/15



Number of Months	Cases 10/11	Cases 11/12	Cases 12/13	Cases 13/14 YTD	Cases 14/15	%	Cumulative %
1-4	1	0	0	1	0	0	0
5-8	35	18	23	21	19	5	5
9-12	75	71	66	95	123	35	40
13-16	104	79	62	49	80	23	63
17-20	48	57	37	26	62	18	81
21-24	27	31	13	26	24	7	88
25-28	9	14	6	17	21	6	93
29-32	7	3	10	13	8	2	96
33-36	6	7	5	10	5	1	97
Over 36	3	7	6	11	10	3	100
Mean Months	15	17	16	17	16		
Median Months	14	15	14	14	14		
Total Cases	315	287	228	267	352		

Analysis of age of cases where a final hearing has concluded in the period April 2014 to March 2015

Age since receipt	Number	%	Cumulative %	Age since SOA	Number	%	Cumulative %
0 to 5 months	0	0	0	0 to 5 months	1	0	0
6 to 7 months	1	0	0	6 to 7 months	3	1	1
8 to 12 months	59	17	17	8 to 12 months	138	39	40
13 to 15 months	80	23	40	13 to 15 months	67	19	59
16 to 20 months	97	28	67	16 to 20 months	75	21	81
21 to 24 months	54	15	83	21 to 24 months	24	7	88
>24 months	61	17	100	>24 months	44	13	100
Mean Average	19				16		
Median Average	17				14		
Total Number of Cases	352				352		

Month	Commentary
March	There are no changes this month
February	There are no changes this month
January	There are no changes this month

Comparison of age of cases from receipt to conclusion of final hearing, for 2013-14 and April 2014 to March 2015

Number of Months	13/14 YTD	% of cases	Cumulative %	14/15 YTD	% of cases	Cumulative %
1-4	16	6	6	8	2	2
5-8	109	41	47	138	39	41
9-12	79	30	76	97	28	69
13-16	28	10	87	60	17	86
17-20	12	4	91	21	6	92
21-24	7	3	94	15	4	96
25-28	5	2	96	5	1	98
29-32	9	3	99	4	1	99
33-36	0	0	99	1	0	99
>36	2	1	100	3	1	100
Mean Months	11			11		
Median Months	9			9		
Total Cases	267	100	100	352	100	100

Month	Commentary
March	There are no changes this month
February	There are no changes this month
January	There are no changes this month

Snapshot of age of Post ICP cases (correct at 31/3/15)

Age since receipt	Number	%	Cumulative %	Age since SOA	Number	%	Cumulative %
0 to 7 months	35	8	8	0 to 7 months	84	20	20
8 to 12 months	102	24	32	8 to 12 months	141	33	53
13 to 15 months	58	14	46	13 to 15 months	62	14	67
16 to 20 months	99	23	69	16 to 20 months	74	17	84
21 to 24 months	59	14	82	21 to 24 months	29	7	91
>24 months	75	18	100	>24 months	38	9	100
Mean months	17			Mean months	20		
Median months	16			Median months	12		
Total cases	428			Total cases	428		

Age since ICP	Number	%	Cumulative %
0 to 5 mths	186	47.1	47.1
6 to 7 mths	67	13.4	60.5
8 to 12 mths	94	21.8	82.3
13 to 15 mths	27	7.9	90.2
16 to 20 mths	34	5.0	95.2
21 to 24 mths	8	2.4	97.6
>24 mths	12	2.4	100.0
	<u>428</u>	<u>100.0</u>	

Analysis of final hearing outcomes by age at each stage, for the periods 2013-14 and April 2014 to March 2015

Type of Sanction	2013-14				April 2014 - March 2015			
	Receipt to Final Hearing		SOA to Final Hearing		Receipt to Final Hearing		SOA to Final Hearing	
	Mean average	Median average	Mean average	Median average	Mean average	Median average	Mean average	Median average
Caution	13	12	12	10	17	15	14	12
Conditions of Practice	16	15	16	13	20	18	18	16
Consensual disposal	22	18	20	15	25	18	22	15
No Further Action	22	17	20	15	16	13	12	12
Not Well Founded	19	17	17	13	18	16	15	13
Suspension	19	17	18	15	19	18	16	14
Struck Off	19	17	18	16	19	18	16	15
Total mean average	18		17		19		16	
Total median average	16		14		17		13	
Total number of cases	267				352			

Month	Commentary
March	There are no significant changes in the mean or median times since last month
February	There are no significant changes in the mean or median times since last month
January	There are no significant changes in the mean or median times since last month

Age of concluded final hearings at each stage, for the periods 2013-14 and April 2014 to March 2015

Source of Complaint	2013-14				April 2014 - March 2015			
	Receipt to Final Hearing		SOA to Final Hearing		Receipt to Final Hearing		SOA to Final Hearing	
	Mean average	Median average	Mean average	Median average	Mean average	Median average	Mean average	Median average
Anonymous / Article 22(6)	23	23	20	17	28	19	22	14
Employer	17	15	16	13	19	18	17	15
Other	20	13	19	13	17	17	15	14
Other Registrant	36	36	35	35	16	15	12	11
Police	20	21	19	21	16	14	16	14
Professional Body	18	18	18	18	19	21	17	19
Public	23	21	22	18	18	14	14	11
Self Referral	12	12	10	10	16	16	12	10
Total mean average	18		17		19		16	
Total median average	16		14		17		13	
Total number of cases	267				352			

Month	Commentary
March	There are no significant changes this month
February	There are no significant changes this month
January	There are no significant changes this month

Comparison of age of concluded final hearings at each stage, by representation, for the periods 2013-14 and April 2014 to March 2015

Type of representation	2013-14				April 2014 - March 2015			
	Receipt to Final Hearing		SOA to Final Hearing		Receipt to Final Hearing		SOA to Final Hearing	
	Mean average	Median average	Mean average	Median average	Mean average	Median average	Mean average	Median average
Represented	19	16	17	14	20	19	17	15
Represented Self	18	15	16	12	17	15	15	13
None	18	15	17	14	19	17	16	14
Total mean average	18		17		19		16	
Total median average	16		14		17		14	
Total number of cases	267				352			

Month	Commentary
March	There are no significant changes in the groups since last month
February	There are no significant changes in the groups since last month
January	There are no significant changes in the groups since last month

Analysis of length of time to close cases at each stage and combined

April 2014 to March 2015			
Stage of case	Number closed	Mean average	Median average
PreICP	1045	6	5
No Case to Answer	351	9	7
Final Hearing	355	19	17
All cases	1751	9	7

	Receipt to conclusion	%	Cumulative %	SOA to conclusion	%	Cumulative %
0 to 2	272	15	15	95	13	13
3 to 4	347	20	35	164	22	36
5 to 8	469	26	61	105	14	50
9 to 12	250	14	76	146	20	70
13 to 15	142	8	84	73	10	80
16 to 20	147	8	92	76	10	90
21 to 24	73	4	96	26	4	94
>24	71	4	100	44	6	100
Total	1771	100		729	100	

Month	Commentary
March	There are no changes in mean or median times for any closure type
February	There are no changes in mean or median times for any closure type
January	There are no changes in mean or median times for any closure type

Month	Commentary
March	There are no significant changes in the last reporting period
February	There are no significant changes in the last reporting period
January	There are no significant changes in the last reporting period