

Human Resources, Partners – Kathryn Neuschafer

Recruitment

Shortlisting is currently underway for partner roles in the Dietitian and Podiatry professions. There are vacancies for Panel member, Visitor and Registration Assessor in Dietetics and vacancies for Panel Member and Visitor for Podiatry.

Recruitment is underway for Orthoptist Panel Member from a shortage following the self assessment process.

Training

Eleven new Legal Assessors attended Induction training at Park House on 1 June 2010.

Two Panel Member refresher training sessions were held recently at Park House. Twenty seven panel members attended refresher training on 26 May and 30 attended on 1 June 2010.

Psychologist Registration Assessors are scheduled to attend a refresher training session on 15 July 2010.

Partner Agreement

The revised partner agreement and Code of Conduct has been sent for the 435 partner roles which expire on 31 July 2010.

Partner Resignations

Twenty Panel Members ended their agreements in April, nine whose profiles failed to meet the standard, eight did not submit a profile and three resigned. Three Visitors and three Registration Assessors also resigned in April. A further two Registration Assessors resigned in May and one Panel member.

Health Professions Council

Partner Breakdown Report April 2009 - March 2011

Human Resources Department

NB the volumes for panel members, visitors, registration assessors and CPD assessors include some partners performing several roles

Panel members and visitors

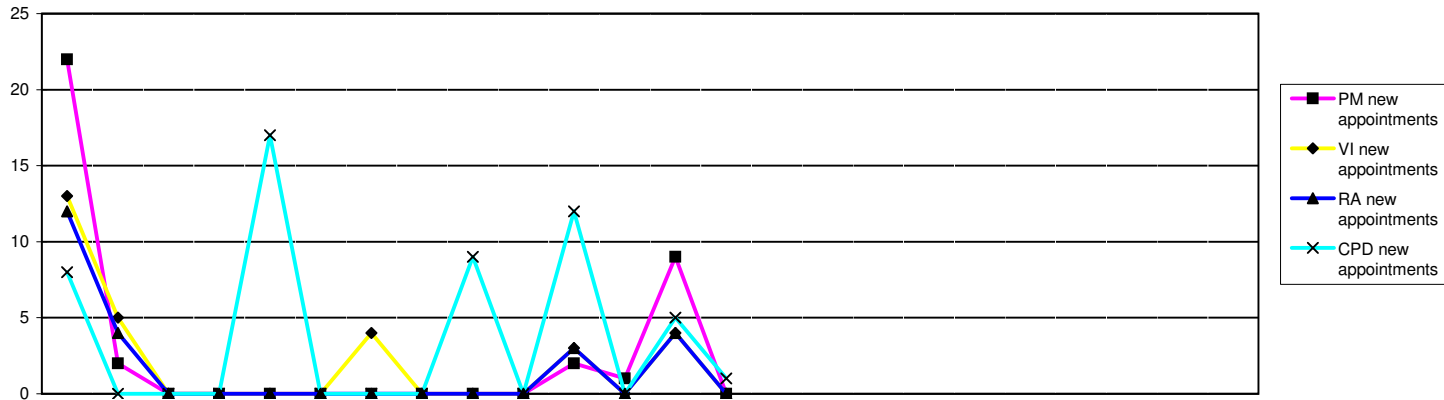
Panel Members	2009			2010									2011									2008/9	09/10	10/11	10/11			
	Apr	May	Jun	Jul	Aug	Sep	Oct	Nov	Dec	Jan	Feb	Mar	Apr	May	Jun	Jul	Aug	Sep	Oct	Nov	Dec	Jan	Feb	Mar	FYE	FYE	YTD	Forecast
Arts therapists	0	0	0	9	9	9	9	9	9	9	8	8	8	8											0	8	8	9
Biomedical scientists	18	18	18	14	14	14	14	14	14	14	14	14	13	13											18	14	13	14
Chirops & podiatrists	8	8	8	8	8	8	8	8	8	8	8	8	6	6											8	8	6	13
Clinical scientists	29	29	29	27	27	26	26	26	26	26	26	25	21	20											29	25	20	26
Dietitians	6	6	6	6	6	6	6	6	6	6	6	5	4	4											6	5	4	6
Hearing aid dispensers+	Not previously required												9	9													9	10
Occupational therapists	11	11	11	10	10	10	10	10	10	10	10	10	10	10											11	10	10	10
ODPs	12	12	12	11	10	10	10	10	10	10	10	10	9	9											12	10	9	15
Orthoptists	5	5	5	6	6	6	6	6	6	6	6	6	3	3											5	6	3	6
Paramedics	14	14	14	14	16	16	16	16	16	16	16	15	14	14											14	15	14	16
Physiotherapists	28	28	28	29	29	27	27	27	27	27	27	27	25	25											28	27	25	27
Practitioner psychologists	23	23	23	24	25	25	25	25	25	25	27	28	28	28												28	28	25
Prosthetists & orthotists	2	2	2	6	6	6	6	6	6	6	6	6	4	4											2	6	4	6
Radiographers	20	20	20	18	18	18	17	17	17	17	17	17	15	15											20	17	15	17
SLTs	12	12	12	12	11	11	11	11	11	11	11	10	9	9											12	10	9	11
Lay members	39	39	39	31	30	30	30	30	30	30	30	27	26	26											39	27	26	40
Total	227	227	227	225	225	222	221	221	221	221	222	216	204	203											204	216	203	251
Visitors																									FYE	FYE	YTD	Forecast
Arts therapists	15	15	15	15	14	14	14	14	14	14	14	14	14	14											15	14	14	22
Biomedical scientists	12	12	12	12	12	12	12	12	12	12	12	12	12	12											12	12	12	11
Chirops & podiatrists	11	11	11	10	9	9	9	9	9	9	9	9	9	9											11	9	9	10
Clinical scientists	5	5	5	9	9	9	9	9	9	9	9	9	8	8											5	9	8	5
Dietitians	5	5	5	8	8	8	8	8	8	8	8	8	8	8											5	8	8	9
Hearing aid dispensers+	Not previously required												4	4													4	4
Occupational therapists	14	14	14	15	15	15	15	15	15	15	15	15	14	14											14	15	14	16
ODPs	10	10	10	10	11	11	11	11	10	10	10	10	10	10											10	10	10	10
Orthoptists	6	6	6	5	5	5	5	5	5	5	5	5	4	4											6	5	4	2
Paramedics	17	17	17	16	16	16	16	16	16	16	16	16	16	16											17	16	16	16
Physiotherapists	16	16	16	14	13	13	13	13	13	13	13	13	13	13											16	13	13	15
Practitioner psychologists	19	19	19	15	24	22	26	26	26	26	29	29	29	29												29	29	32
Prosthetists & orthotists	4	4	4	4	4	4	4	4	4	4	4	4	4	4											4	4	4	3
Radiographers	17	17	17	16	16	16	16	16	16	16	16	16	16	16											17	16	16	13
SLTs	11	11	11	10	10	10	10	10	10	10	10	10	10	10											11	10	10	10
Lay members	4	4	4	4	4	4	4	4	4	4	4	4	4	4											4	4	4	4
Total	166	166	166	163	170	168	172	172	171	171	174	174	175	175											147	174	175	182

+ Hearing aid dispensers section of register opened 1st April 2010

Page 10 contd - Registration assessors and CPD assessors

Registration Assessors	2009			2010									2011									2008/9	09/10	10/11	10/11				
	Apr	May	Jun	Jul	Aug	Sep	Oct	Nov	Dec	Jan	Feb	Mar	Apr	May	Jun	Jul	Aug	Sep	Oct	Nov	Dec	Jan	Feb	Mar	FYE	FYE	YTD	Forecast	
Arts therapists	6	6	6	6	6	6	6	6	6	6	6	6	6	6											6	6	6	6	
Biomedical scientists	18	18	18	17	17	16	16	16	16	16	16	16	16	16											18	16	16	16	
Chirops & podiatrists	17	17	17	6	5	5	5	5	5	5	5	5	5	5										17	5	5	5		
Clinical scientists	25	25	25	23	24	23	23	23	23	23	23	23	22	22										25	23	22	25		
Dietitians	9	9	9	9	8	8	8	8	8	8	8	8	7	7										9	7	7	8		
Hearing aid dispensers+	Not previously required												4	4														4	5
Occupational therapists	12	12	12	11	11	11	11	11	11	11	11	11	10	10										12	11	10	11		
ODPs	4	4	4	4	4	4	4	4	4	4	4	4	4	4										4	4	4	4		
Orthoptists	6	6	6	6	6	6	6	5	5	5	5	5	5	5										6	5	5	5		
Paramedics	15	15	15	13	13	13	13	13	13	13	13	13	12	12										15	13	12	13		
Physiotherapists	25	25	25	22	22	22	22	22	22	22	22	22	21	21										25	22	21	22		
Practitioner psychologists	18	18	18	25	25	25	25	25	25	25	26	26	26	24											26	24	25		
Prosthetists & orthotists	3	3	3	3	3	3	3	3	3	3	5	5	5	5										3	5	5	3		
Radiographers	17	17	17	17	17	17	17	17	16	16	16	16	16	16										17	16	16	16		
SLTs	12	12	12	12	12	12	12	12	12	12	12	12	12	12										12	12	12	12		
Total	187	187	187	174	173	171	171	170	169	169	172	171	171	169										169	171	169	176		
CPD Assessors																									FYE	FYE	YTD	Forecast	
Arts therapists	0	0	0	0	0	0	0	0	0	0	0	0	2	3												0	3	2	
Biomedical scientists	0	0	0	1	8	8	8	8	8	8	8	8	8	8										13	8	8	8		
Chirops & Podiatrists	13	13	13	13	13	13	13	13	13	13	13	13	13	13											13	13	13	13	
Clinical scientists	0	0	0	0	2	2	2	2	2	2	2	2	2	2												2	2	2	
Dietitians	0	0	0	0	0	0	0	0	0	0	0	0	3	3												0	3	3	
Hearing aid dispensers+	Not previously required												Not required																
Occupational therapists	0	0	0	5	10	10	10	10	10	10	10	10	10	10											10	10	10	10	
ODPs	10	10	10	10	10	10	10	10	10	10	10	10	10	10											10	10	10	10	
Orthoptists	1	1	1	2	2	2	2	2	2	2	2	2	2	2												2	2	2	
Paramedics	6	6	6	6	6	6	6	6	6	6	6	6	6	6												6	6	6	
Physiotherapists	0	0	0	0	0	0	0	0	0	0	12	12	12	12												12	12	12	
Practitioner psychologists	0	0	0	0	0	0	0	0	0	0	0	0	0	0												0	0	0	
Prosthetists & orthotists	0	0	0	0	2	2	2	2	2	2	2	2	2	2												2	2	2	
Radiographers	0	0	0	0	0	0	0	0	9	9	9	9	9	9												9	9	9	
SLTs	0	0	0	0	3	3	3	3	3	3	3	3	3	3												3	3	3	
Total	30	30	30	37	56	56	56	56	65	65	77	77	82	83										23	77	83	82		
Legal Assessors				12	12	11	11	11	11	11	11	10	10	21													10	21	19
Panel Chair				19	19	19	20	19	19	19	19	19	19	19													19	19	19
Total Partner Numbers																												Total YTD	Total Forecast
																												670	729

+ Hearing aid dispensers section of register opened 1st April 2010



	2009			2010												2011			2008/9 FYE	09/10 FYE	10/11 YTD					
	Apr	May	Jun	Jul	Aug	Sep	Oct	Nov	Dec	Jan	Feb	Mar	Apr	May	Jun	Jul	Aug	Sep				Oct	Nov	Dec	Jan	Feb
Panel members																										
PM new appointments	22	2	0	0	0	0	0	0	0	0	2	1	9	0									15	27	9	
Resignations/Terminations													21	1										34	22	
Total NumberTrained	242	242	242	225	224	221	220	220	220	221	222	216	204	203									219	216	203	
Awaiting training	20	22	22	1	1	1	1	1	1	0	0	0	0	0									21	0	0	
Visitors																										
VI new appointments	13	5	0	0	0	0	4	0	0	0	3	0	4	0									32	25	4	
Resignations/Terminations													3	0										3	3	
Total NumberTrained	157	157	157	163	160	158	158	157	168	171	171	172	172									138	171	172		
Awaiting training	20	25	25	10	10	10	14	14	14	3	3	3	3	3									26	3	3	
Registration assessors																										
RA new appointments	12	4	0	0	0	0	0	0	0	0	3	0	4	0									19	19	4	
Resignations/Terminations													4	2										5	6	
Total NumberTrained	211	211	211	174	173	171	171	170	169	168	170	169	169	167									193	169	167	
Awaiting training	7	11	11	0	1	1	1	1	1	1	2	2	2	2									14	2	2	
CPD assessors																										
CPD new appointments	8	0	0	0	17	0	0	0	9	0	12	0	5	1									4	46	6	
Resignations/Terminations													0	0										0	0	
Total NumberTrained	31	37	37	37	37	52	52	52	52	65	77	77	81	82									25	77	82	
Awaiting training	2	2	2	2	4	4	4	4	13	0	0	0	1	1									1	0	1	
Legal Assessors																										
LA new appointments				0	0	0	0	0	0	0	0	0	0	11										0	11	
Resignations/Terminations													1	0										1	1	
Total NumberTrained				12	12	11	11	11	11	11	11	10	10	21										10	21	
Awaiting training				0	0	0	0	0	0	0	0	0	0	0										0	0	
Panel Chairs																										
Panel Chair new appointments				0	0	0	0	0	0	0	0	0	0	0										0	0	
Resignations/Terminations													0	0										0	0	
Total NumberTrained				19	19	19	20	19	19	19	19	19	19	19										19	19	
Awaiting training				0	0	0	0	0	0	0	0	0	0	0										0	0	