

## Human Resources, Partners – Kathryn Neuschafer

### **Recruitment**

Recruitment has commenced for additional lay panel members. Vacancies have been advertised on the Cabinet Office Public Appointments on-line and The Times on-line and The Times in print. Applications for the ten lay panel member vacancies close on 10 September 2010.

Orthoptist registrants have been contacted by mail in an attempt to fill the two panel member vacancies unfilled from the recent campaign. Applications close on 10 September 2010.

### **Training**

Six panel members attended induction training at Roots and Shoots training venue on 28 and 29 July 2010.

Four registration Assessors attended induction training on 28 July at Park House.

Fifteen Practitioner Psychologist Registration Assessors attended refresher training at Roots and Shoots on 15 July 2010.

There is no training scheduled in August and September, refresher training resumes in October for Visitors, Panel Members and Legal Assessors.

### **Partner Resignations**

Following the end of the contract renewal period on 31 July 2010, resignations were received for 23 roles. This comprised of seven Panel Members, seven Registration Assessors, eight Visitors and one CPD Assessor. We are awaiting notification

from the respective departments on any immediate recruitment requirements following resignations.

### **Partner Appraisals**

The appraisals of Registration Assessors have commenced this month with Physiotherapy being the first profession to undergo the peer appraisal. Panel Member appraisals are on-going and Visitor appraisals are continuing in line with the scheduling of approval visits and annual monitoring days.

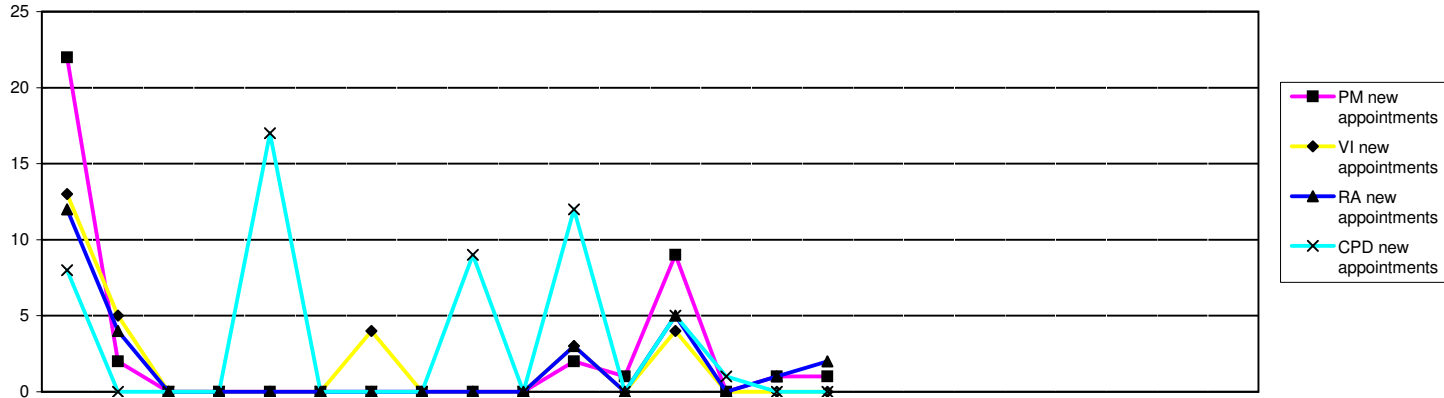
### **Department Information**

The Department is currently recruiting for a fixed-term Partner Team Administrator following the resignation of Hanna Crease.

In preparation for the Partner audit with BSI in October, the department will undergo an internal audit with the Business Process Improvement Department in September. Process flows and the intranet are currently being updated in preparation for the audit







	2009												2010												2011												2008/9 FYE	09/10 FYE	10/11 YTD
	Apr	May	Jun	Jul	Aug	Sep	Oct	Nov	Dec	Jan	Feb	Mar	Apr	May	Jun	Jul	Aug	Sep	Oct	Nov	Dec	Jan	Feb	Mar	Apr	May	Jun	Jul	Aug	Sep	Oct	Nov	Dec	Jan	Feb	Mar			
<b>Panel members</b>																																							
PM new appointments	22	2	0	0	0	0	0	0	0	0	2	1	9	0	1	1													15	27	11								
Resignations/Terminations													3	1	0	0	0	1	7	21	1	1	7													42	30		
Total NumberTrained	242	242	242	225	224	221	220	220	220	221	222	216	204	204	204	198													219	216	198								
Awaiting training	20	22	22	1	1	1	1	1	1	0	0	0	0	0	0	0													21	0	0								
<b>Visitors</b>																																							
VI new appointments	13	5	0	0	0	0	4	0	0	0	3	0	4	0	0	0													32	25	4								
Resignations/Terminations													2	0	0	1	0	0	0	3	0	3	8													3	14		
Total NumberTrained	157	157	157	163	160	158	158	158	157	168	171	171	172	172	169	161													138	171	161								
Awaiting training	20	25	25	10	10	10	14	14	14	3	3	3	3	3	3	3													26	3	3								
<b>Registration assessors</b>																																							
RA new appointments	12	4	0	0	0	0	0	0	0	0	3	0	5	0	1	2													19	19	8								
Resignations/Terminations													2	0	1	1	0	0	1	4	2	5	7													5	18		
Total NumberTrained	211	211	211	174	173	171	171	170	169	168	170	169	170	168	164	161													193	169	161								
Awaiting training	7	11	11	0	1	1	1	1	1	1	2	2	2	2	2	0													14	2	0								
<b>CPD assessors</b>																																							
CPD new appointments	8	0	0	0	17	0	0	0	9	0	12	0	5	1	0	0													4	46	6								
Resignations/Terminations													0	0	0	0	0	0	0	0	0	0	1													0	1		
Total NumberTrained	31	37	37	37	37	52	52	52	52	65	77	77	81	82	82	81													25	77	81								
Awaiting training	2	2	2	2	4	4	4	4	13	0	0	0	1	1	1	1													1	0	1								
<b>Legal Assessors</b>																																							
LA new appointments				0	0	0	0	0	0	0	0	0	0	11	0	0													0	11									
Resignations/Terminations							1	0	0	0	0	0	1	0	0	0													1	1									
Total NumberTrained				12	12	11	11	11	11	11	11	10	10	21	21	21													10	21									
Awaiting training				0	0	0	0	0	0	0	0	0	0	0	0	0													0	0									
<b>Panel Chairs</b>																																							
Panel Chair new appointments				0	0	0	0	0	0	0	0	0	0	0	0	0													0	0									
Resignations/Terminations							0	0	1	0	0	0	0	0	0	0													0	0									
Total NumberTrained				19	19	19	20	19	19	19	19	19	19	19	19													19	19										
Awaiting training				0	0	0	0	0	0	0	0	0	0	0	0	0													0	0									