

Fitness to Practise – Kelly Johnson

Number of Allegations

Between April and September 2010, 364 allegations/enquiries were received. It was forecasted that HPC would receive 838 cases over the course of 2010-11. It is now anticipated that 728 allegations/enquiries will be received over the course of the financial year 2010-11.

Number of open cases pre ICP

At the end of September 2010, there was open pre ICP case load of 332 cases. At the start of the financial year, there were 390 open cases. The lower open case load, allows the HPC to be more proactive in chasing and reviewing cases as appropriate.

Length of time

For cases that have been considered at Investigating Committee panel between April and September, the mean and median length of time is 6 and 5 months.

There are currently 52 cases over 5 months old within the pre investigating committee remit. In 47 cases we are awaiting further information from a third party. Case Managers are active in their review of these cases.

Case to Answer percentage

Of cases considered by an Investigating Committee, the case to answer percentage is now 58%. Taking into account cases that are closed before consideration by an investigating committee (for instance as they do not meet the standard of acceptance for allegations), the percentage of cases referred to final hearing is 37 %.

Number of cases awaiting hearing

There are 244 cases currently in the remit of the Conduct and Competence or Health Committee. 143 of those cases have hearing date or proceedings have started but not concluded. There are a further 42 cases that are ready to fix and the scheduling team is in the process of fixing those cases. There are 5 cases over five months old that are not ready to fix and in those cases a number of complex issues have arisen since their referral by the Investigating Committee.

Length of time

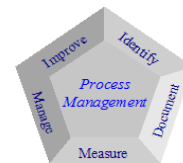
Of the cases concluded at final hearing between April and September, the total length of time taken for a case to conclude is a mean of 15 months and a median of 14 months which compares to a mean and median of 18 and 16 months for 2009-10. This is an improvement in both the length of time for a case to get to an investigating committee and from investigating committee to final hearing.

Meetings

01 June 2010 Norwegian Board of Health
09 June 2010 Independent Safeguarding Authority
23 June 2010 Blake Laphorn Tarlo Lyons
23 June 2010 OHPA: Quadrant Consultants
24 June 2010 Paul Turner, Institute of Chartered Accountants
in England and Wales
28 June 2010 Council of Deans of Health
29 June 2010 West Midlands Ambulance Service
01 July 2010 GSCC
08 July 2010 Esther McMorris, Nine Feet Tall
15 July 2010 Sarah Billington, OHPA
23 July 2010 South Western Ambulance Service
02 August 2010 Jo-anne Carlyle
03 August 2010 Kingsley Napley
10 August 2010 Great Western Ambulance Service
12 August 2010 London Ambulance Service.
16 August 2010 Northern Ireland Ambulance Service
17 August 2010 Scottish Ambulance Service
06 September 2010 East of England Ambulance Service
07 September 2010 GSCC
08 September 2010 Conference with Council
14 September 2010 AGM Edinburgh
16 September 2010 Diane Latham, Medical Council of New
Zealand. Department of Health.
20 September 2010 Jonathan Coe, Professional Boundaries
21 September 2010 Mike Andrews, GSCC
28 September 2010 Rosalyn Hayles, CHRE

Management Information Pack

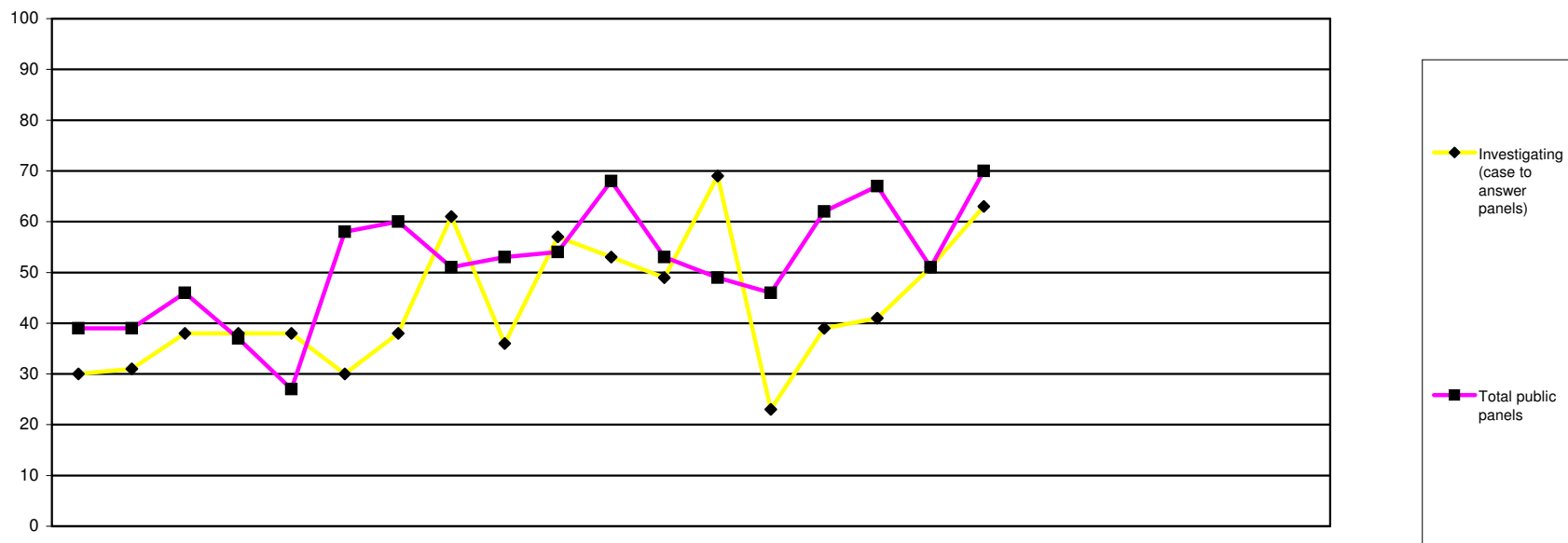
Marc Seale, Chief Executive & Registrar
Fitness to Practise Figures for April 2010 to 200 to
Executive Management Team



hpc health
professions
council

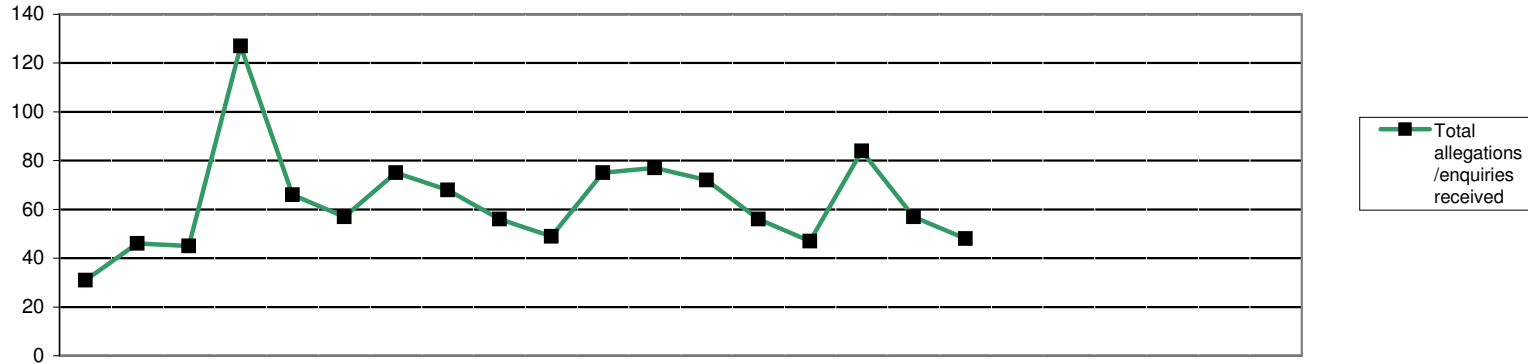
Management Reporting Information to Executive Management Team
Fitness to Practise
Figures for April to 2010

Fitness to Practise	Total Cases Considered	25
	Enquiries and allegations: source	26
	Enquiries and Allegations: Profession & source of complaint	27
	Total Investigating Panel decisions and referrals	28
	Investigating Panel Decisions by profession and source of allegation	29
	Interim Orders by profession	30
	Panel Hearings, Decisions Conduct and Competence Committee	31
	Panel Hearings Decisions Health and Investigating	32
	Panel Hearings Decisions CCC and HC Review	33
	Final hearings (CCC and HC) representation	34
	Hearings: decisions by profession	35
	Length of time: Allegations	36
	Length of time: Cases Investigating Committee 2003-4 to 2009-10	37
	Allegations made: conclusion of final hearing 2003-4 to 2009-10	38
	Allegations made - conclusion of final hearing percentages	39
	Allegations made: Investigating Panel 2003-4 to 2009-10	40
	Allegations made - Investigating Panel percentages	41
	Investigating Panel - Case Conclusion (concluded final hearing cases)	42
	Investigating Panel - Case Conclusion percentages	43
Registration Appeals	Registration Appeals	44
Protection of Title	Protection of Title	45
Health and Character	Health and Character Declarations	46



	2009			2010									2011									2007/8	2008/9	09/10	10/11					
	Apr	May	Jun	Jul	Aug	Sep	Oct	Nov	Dec	Jan	Feb	Mar	Apr	May	Jun	Jul	Aug	Sep	Oct	Nov	Dec	Jan	Feb	Mar	FYE	FYE	FYE	YTD		
Investigating (case to answer panels)	30	31	38	38	38	30	38	61	36	57	53	49	69	23	39	41	51	63												
Investigating (incorrect entry)	1	1	0	0	0	0	0	0	0	0	1	1	0	0	1	1	0	0												
Conduct & Competence	20	19	27	26	24	37	36	29	31	34	33	35	29	27	33	45	26	38												
Health	1	0	0	0	0	0	1	0	0	3	1	0	1	0	2	1	3	1												
Review cases	3	9	8	2	9	9	10	14	8	9	10	5	8	3	13	7	6	14												
Interim order (application)	9	2	3	2	3	4	2	2	7	4	5	3	4	7	2	7	5	4												
Interim order (review)	5	8	8	7	5	8	11	6	7	4	18	9	7	9	11	6	11	13												
Total public panels	39	39	46	37	27	58	60	51	53	54	68	53	49	46	62	67	51	70	343	384	599	345								
Total panels	69	70	84	75	79	88	98	112	89	111	121	102	118	69	101	108	102	133	640	747	1098	631								

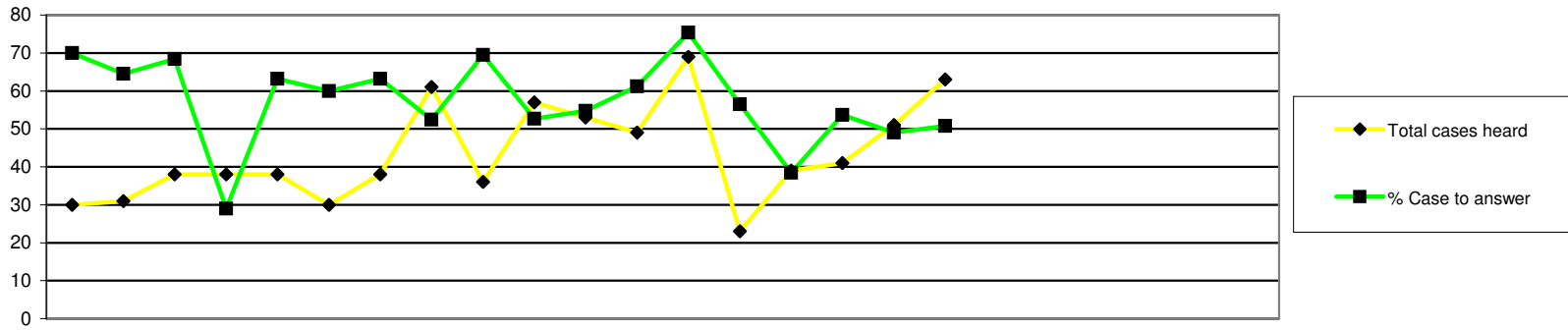
This table displays how many cases were considered by each type of panel



		2009			2010									2011						2005/6	2006/7	2007/8	2008/9	09/10	10/11						
		Apr	May	Jun	Jul	Aug	Sep	Oct	Nov	Dec	Jan	Feb	Mar	Apr	May	Jun	Jul	Aug	Sep	Oct	Nov	Dec	Jan	Feb	Mar	FYE	FYE	FYE	FYE	FYE	YTD
Source of enquiry	Total enquiries	5	19	17	45	19	22	24	19	15	15	14	29	17	17	20	29	17	14												
	Employer	3	9	8	10	8	10	15	5	4	2	3	1	3	5	5	8	2	1												
	Public	0	8	4	30	6	10	4	4	9	11	7	21	8	10	10	10	8	6												
	Police	0	0	2	0	0	0	0	0	1	0	0	1	0	0	0	1	0	0												
	Professional body	0	0	0	0	0	0	0	0	0	0	0	0	0	0	0	0	0	0												
	Registrant	1	1	1	2	1	1	2	6	1	0	0	2	6	1	5	5	4	3												
	Other	0	0	0	2	2	1	1	3	0	1	3	1	0	0	0	0	0	0												
	Article 22(6)/Anon	1	1	2	1	2	0	2	1	0	1	1	3	0	1	0	5	3	4												
Source of allegation	Total allegations	26	27	28	82	47	35	51	49	41	34	61	48	55	39	27	55	40	34	#N/A	#N/A	#N/A	#N/A	#N/A	#N/A	316	322	315	341	529	250
	Employer	12	21	12	26	13	10	18	11	11	15	20	13	21	19	12	15	9	17							113	164	127	149	182	93
	Public	3	1	7	33	16	8	14	15	15	8	17	15	21	10	10	12	15	10							61	77	76	67	152	78
	Police	3	2	2	4	4	4	2	2	2	5	3	3	4	1	1	5	3	1							27	31	32	32	36	15
	Professional body	0	0	0	0	0	1	0	0	0	0	0	0	1	0	0	0	0	1							0	1	6	1	1	2
	Registrant	4	1	1	3	3	4	5	6	2	2	5	9	0	1	1	2	4	0							30	16	22	30	45	8
	Other	1	0	1	6	1	2	3	2	2	0	1	2	3	2	0	2	0	0							13	7	3	14	21	7
	Article 22(6)/Anon	3	2	5	10	10	6	9	13	9	4	15	6	5	6	3	19	9	5							57	23	49	48	92	47
Allegation type	Misconduct	14	16	13	53	32	23	41	33	28	23	42	36	41	30	18	40	30	31							205	228	177	223	354	190
	Lack of competence	6	4	10	15	8	7	7	7	5	6	10	6	4	2	5	4	1	0							33	44	29	50	91	16
	Convict/caution	5	6	4	12	4	5	3	7	5	5	6	6	8	7	3	7	6	3							41	41	49	51	68	34
	Health	1	0	0	1	1	0	0	1	1	0	0	0	2	0	1	1	1	0							2	1	1	7	5	5
	Other regulator	0	0	0	0	0	0	0	0	0	0	0	0	0	0	0	0	1	0							1	0	2	1	0	1
	Incorrect or fraudulent entry	0	1	1	1	2	0	0	1	2	0	2	0	0	0	0	0	0	0							33	3	4	6	10	0
	Not classified	0	0	0	0	0	0	0	0	0	0	0	0	0	0	0	3	1	0									24	3	0	4
Total allegations/enquiries received	31	46	45	127	66	57	75	68	56	49	75	77	72	56	47	84	57	48							314	318	424	483	772	364	

	Employer	Public	Police	Professional Body	Registrant	Other	Article 22(6)/Anon	
Arts therapists	1	0	0	0	1	0	1	
Biomedical scientists	13	3	0	0	1	0	6	
Chiropodists & podiatrists	8	15	4	0	5	0	1	
Clinical scientists	2	1	0	0	0	0	2	
Dietitians	3	0	0	0	0	0	1	
Hearing aid dispensers	8	21	0	1	0	1	0	
Occupational therapists	8	13	1	0	4	3	5	
ODPs	8	3	1	1	0	0	4	
Orthoptists	0	0	0	0	0	0	0	
Paramedics	35	12	3	0	1	0	27	
Physiotherapists	10	19	4	0	12	0	4	
Practitioner psychologists	4	38	0	0	7	2	4	
Prosthetists & orthotists	0	0	0	0	1	0	0	
Radiographers	13	0	2	0	0	0	3	
SLTs	5	5	1	0	0	1	1	
Total	118	130	16	2	32	7	59	

Total 2007/8	Total 2008/9	Total 2009/10	Total to date
16	10		3
26	43		23
40	62		33
6	8		5
14	1		4
			31
45	55		34
38	55		17
3	0		0
94	100		78
85	95		49
N/A	N/A		55
3	6		1
32	34		18
22	14		13
424	483		364



		2009			2010									2011									2006/7	2007/8	2008/9	09/10	10/11			
		Apr	May	Jun	Jul	Aug	Sep	Oct	Nov	Dec	Jan	Feb	Mar	Apr	May	Jun	Jul	Aug	Sep	Oct	Nov	Dec	Jan	Feb	Mar	FYE	FYE	FYE	FYE	YTD
Case to Answer	Total cases heard	30	31	38	38	38	30	38	61	36	57	53	49	69	23	39	41	51	63							178	299	363	499	286
	Referred to CCC (Reg representations)	13	13	20	7	14	12	18	21	18	19	19	20	34	9	6	14	15	18								97	126	194	96
	Referred to CCC (Rep representations)	0	1	1	2	2	1	2	2	3	3	1	2	3	0	0	2	2	2								25	14	20	9
	Referred to CCC (No representations)	6	5	4	2	7	5	3	9	4	7	8	7	10	4	8	6	5	12								57	60	67	45
	Referred to HC (Reg representations)	1	1	0	0	1	0	1	0	0	0	1	1	2	0	0	0	1	0								3	5	6	3
	Referred to HC (Rep representations)	0	0	0	0	0	0	0	0	0	0	0	0	0	0	1	0	1	0								2	0	0	2
	Referred to HC (No representations)	0	0	1	0	0	0	0	0	0	0	0	0	3	0	0	0	1	0								1	0	1	4
	Referred to IC (Reg representations)	1	0	0	0	0	0	0	0	0	0	0	0	0	0	0	0	0	0								1	0	1	0
	Referred to IC (Rep representations)	0	0	0	0	0	0	0	0	0	0	0	0	0	0	0	0	0	0								0	0	0	0
	Referred to IC (No representations)	0	0	0	0	0	0	0	0	0	1	0	0	0	0	0	0	0	0								0	1	1	0
	Total case to answer	21	20	26	11	24	18	24	32	25	30	29	30	52	13	15	22	25	32							82	186	206	290	159
% Case to answer	70	65	68	29	63	60	63	52	69	53	55	61	75	57	38	54	49	51								62	57	58	56	
No case to answer	Not referred (Reg representations)	9	8	10	24	11	9	12	26	10	21	20	16	15	8	18	10	17	26								78	115	176	94
	Not referred (Rep representations)	0	0	1	2	1	1	0	0	0	2	1	0	1	0	2	5	2	2								8	13	8	12
	Not referred (No representations)	0	1	1	0	1	1	2	1	0	2	2	3	0	1	0	2	1	2								21	21	14	6
	Total cases not referred	9	9	12	26	13	11	14	27	10	25	23	19	16	9	20	17	20	30								107	149	198	112
	Further Information	0	1	0	1	1	1	0	2	1	2	1	0	1	1	4	2	6	1								14	6	8	10

By profession

	No Case to Answer	Case to answer				Total YTD
		FI	CCC	HC	IC	
Arts therapists	0	0	0	1	0	1
Biomedical scientists	6	1	13	1	0	21
Chiropodists & podiatrists	9	6	10	1	0	26
Clinical scientists	0	0	1	0	0	1
Dietitians	1	1	3	0	0	5
Hearing aid dispensers	1	1	0	0	0	2
Occupational therapists	7	2	11	3	0	23
ODPs	5	0	14	0	0	19
Orthoptists	1	0	0	0	0	1
Paramedics	19	2	46	0	0	67
Physiotherapists	23	1	24	1	0	49
Practitioner psychologists	29	0	11	0	0	40
Prosthetists & orthotists	2	0	2	0	0	4
Radiographers	6	1	11	1	0	19
SLTs	3	0	4	1	0	8
Total YTD	112	15	150	9	0	286

2007/2008 FYE	2008/2009 FYE	2009/10 FYE	2010/11 YTD
11	6	4	1
14	42	26	21
31	31	53	26
6	7	3	1
9	5	7	5
<hr/>			
29	40	60	23
24	30	49	19
2	1	0	1
62	72	115	67
56	75	93	49
0	0	38	40
4	2	4	4
41	32	34	19
10	20	13	8
299	363	499	286

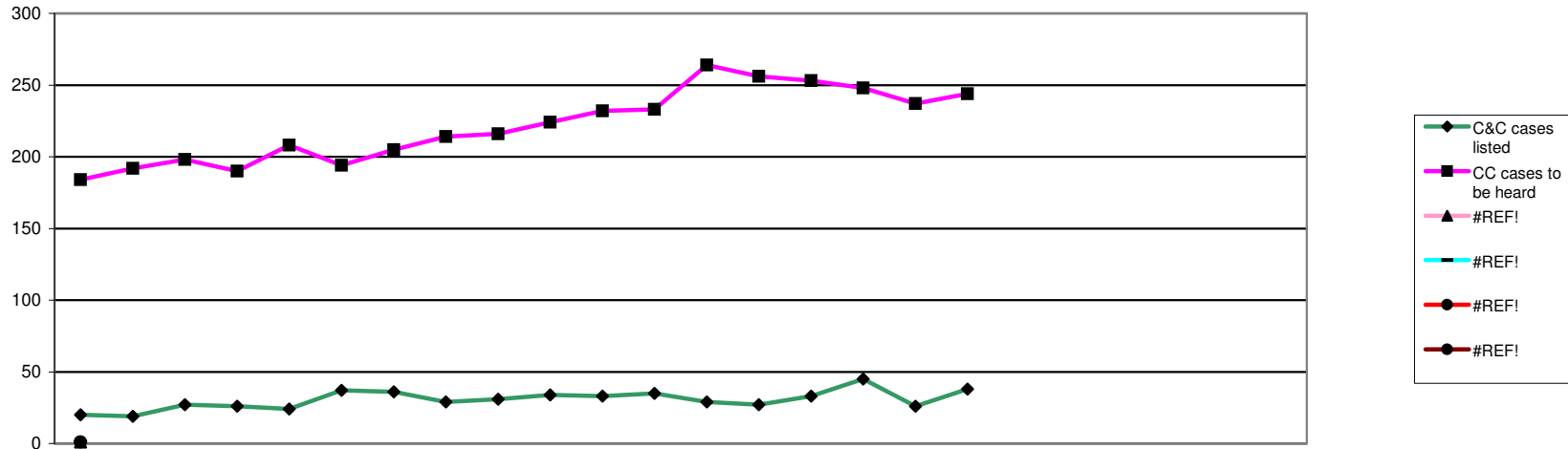
By source of allegation

	No Case to Answer	Case to answer				Total YTD
		FI	CCC	HC	IC	
Employer	21	6	90	6	0	123
Public	59	5	12	0	0	76
Police	8	0	11	0	0	19
Professional body	0	0	0	0	0	0
Registrant	7	3	4	0	0	14
Other	4	0	3	0	0	7
Article 22(6)/Anon	13	1	30	3	0	47
Total YTD	112	15	150	9	0	286

2008/2009 FYE	2009/10 FYE	2010/11 YTD
176	211	123
78	140	76
30	29	19
2	2	0
12	32	14
19	15	7
46	70	47
363	499	286

	Applications Considered	Applications Granted	Applications Not Granted	Reviewed	Revoked
Arts therapists	0	0	0	0	0
Biomedical scientists	2	2	0	0	0
Chiropodists & podiatrists	2	2	0	3	0
Clinical scientists	1	1	0	0	0
Dietitians	0	0	0	0	0
Hearing aid dispensers	1	1	0	1	1
Occupational therapists	4	2	2	3	0
ODPs	3	3	0	11	2
Orthoptists	0	0	0	0	0
Paramedics	9	9	0	16	1
Physiotherapists	3	3	0	8	0
Practitioner psychologists	0	0	0	5	0
Prosthetists & orthotists	0	0	0	0	0
Radiographers	3	3	0	6	1
SLTs	0	0	0	2	0
Total	28	26	2	55	5

Hearings held 2007/8 FYE	Hearings held 2008/9 FYE	Hearings held 2009/10 FYE	Hearings held 2010/11 YTD
4	4	2	0
8	16	8	2
6	5	13	5
4	0	0	1
0	0	0	0
			2
3	6	9	7
18	18	20	14
0	0	0	0
16	14	46	25
8	13	20	11
			3
0	0	0	0
7	6	12	9
0	3	8	2
74	85	141	83



Conduct and Competence Committee

	2009			2010									2011									2005/6	2006/7	2007/8	2008/9	09/10	10/11				
	Apr	May	Jun	Jul	Aug	Sep	Oct	Nov	Dec	Jan	Feb	Mar	Apr	May	Jun	Jul	Aug	Sep	Oct	Nov	Dec	Jan	Feb	Mar	FYE	FYE	FYE	FYE	FYE	YTD	
C&C cases listed	20	19	27	26	24	37	36	29	31	34	33	35	29	27	33	45	26	38							73	119	176	231	351	198	
Struck off	0	4	9	3	10	10	5	9	1	3	3	8	5	6	3	4	3	6							11	26	37	64	65	27	
Suspended	4	2	1	4	1	6	5	7	4	3	0	1	3	3	3	6	1	3							19	19	30	23	38	19	
Conditions of practice	1	2	0	1	0	2	1	3	1	0	3	0	3	0	1	1	1	2							5	5	7	10	14	8	
Caution	6	2	3	8	4	0	3	1	6	6	1	6	1	6	8	10	10	4							8	32	28	24	46	39	
No further action	2	0	1	1	0	3	0	0	0	0	0	0	0	1	0	0	1	0							4	6	4	7	7	2	
Not well founded	3	4	3	4	3	5	9	2	10	8	10	9	9	4	7	9	3	8								0	19	36	70	40	
Adjourned/part heard	3	5	10	5	6	7	10	5	9	8	12	10	6	7	10	10	5	12							22	22	32	35	90	50	
Cancelled	0	0	0	0	0	4	1	1	0	5	1	0	1	0	0	3	0	2								0	24	21	12	6	
Referred to Health	0	0	0	0	0	0	1	0	0	1	0	0	0	0	0	0	0	0							1	0	1	0	2	0	
Removed - consent	1	0	0	0	0	0	1	1	0	0	3	1	1	0	1	2	2	1												7	
CC cases to be heard	184	192	198	190	208	194	205	214	216	224	232	233	264	256	253	248	237	244							59	59	172	117	233	244	

		2009			2010									2011									2005/6	2006/7	2007/8	2008/9	09/10	10/11				
		Apr	May	Jun	Jul	Aug	Sep	Oct	Nov	Dec	Jan	Feb	Mar	Apr	May	Jun	Jul	Aug	Sep	Oct	Nov	Dec	Jan	Feb	Mar	FYE	FYE	FYE	FYE	FYE	YTD	
Health Committee	Health cases listed	1	0	0	0	0	0	1	0	0	3	1	0	1	0	2	1	3	1							8	7	9	2	6	8	
	Suspended	1	0	0	0	0	0	0	0	0	1	0	0	0	0	0	0	1	1							2	2	5	1	2	2	
	Conditions of practice	0	0	0	0	0	0	0	0	0	1	0	0	0	0	2	0	0	0							3	1	0	1	1	2	
	Caution	0	0	0	0	0	0	0	0	0	0	0	0	0	0	0	0	0	0							0	0	0	0	0	0	
	No further action	0	0	0	0	0	0	0	0	0	0	0	0	0	0	0	0	0	0							0	1	0	0	0	0	
	Not well founded	0	0	0	0	0	0	1	0	0	1	1	0	0	0	0	0	1	0							Not recorded			1	1	3	1
	Adjourned/part heard	0	0	0	0	0	0	0	0	0	0	0	0	1	0	0	0	0	0							Not recorded			1	0	0	1
	Cancelled	0	0	0	0	0	0	0	0	0	0	0	0	0	0	0	0	0	0							Not recorded			2	0	0	0
	Referred to C&C	0	0	0	0	0	0	0	0	0	0	0	0	0	0	0	0	1	0							Not recorded			0	0	0	1
	Removed - consent	0	0	0	0	0	0	0	0	0	0	0	0	0	0	0	1	0	0							Not recorded						1
	Hlth cases to be heard	6	7	8	8	8	8	8	8	8	6	7	8	15	15	14	13	13	12							7	7	4	5	8	12	
	Investigating	Removed	1	1	0	0	0	0	0	0	0	0	1	0	0	0	1	0	0												3	1
		Amended	0	0	0	0	0	0	0	0	0	1	0	0	0	0	0	0	0												1	0
Not well found		0	0	0	0	0	0	0	0	0	0	0	0	0	0	1	0	0												0	1	
No further action		1	0	0	0	0	0	0	0	0	0	0	0	0	0	0	0	0	0											1	0	
Adjourned/part heard		0	0	0	0	0	0	0	0	0	0	0	0	0	0	0	0	0	0											0	0	
Investigating Committee cases to be heard	0	0	0	0	0	0	0	0	0	0	0	1	2	2	1	0	0	0											1	0		

		2009			2010									2011									2005/6	2006/7	2007/8	2008/9	09/10	10/11				
		Apr	May	Jun	Jul	Aug	Sep	Oct	Nov	Dec	Jan	Feb	Mar	Apr	May	Jun	Jul	Aug	Sep	Oct	Nov	Dec	Jan	Feb	Mar	FYE	FYE	FYE	FYE	FYE	YTD	
CCC and HC Review Hearings	Review cases listed	3	9	8	2	9	9	10	14	8	9	10	5	8	3	13	7	6	14									41	67	67	96	51
	Struck off	2	5	3	1	1	1	2	7	3	3	3		1	0	3	3	1	3										10	31	31	11
	Suspension continued	1	3	4	0	4	3	4	4	2	3	3	4	2	0	4	1	0	4										37	31	35	11
	Conditions continued	0	0	1	0	0	3	0	0	2	0	1	0	0	1	0	1	1	1										2	7	7	4
	Suspension revoked	0	0	0	0	3	0	2	1	0	1	1	0	0	1	0	1	0	1										2	8	8	3
	Suspension revoked conditions imposed	0	0	0	0	0	1	1	0	1	1	0	0	1	0	1	0	0	1										1	4	4	3
	Suspension revoked caution imposed	0	0	0	0	0	0	0	0	0	0	0	1	1	0	1	0	0	1										0	0	1	3
	Conditions revoked	0	1	0	0	1	1	0	1	0	0	1	0	0	2	0	3	1	2	0									5	5	5	8
	Conditions revoked suspension imposed	0	0	0	0	0	0	0	1	0	0	0	0	0	0	0	0	0	0	0									5	1	1	0
	Conditions revoked caution imposed	0	0	0	1	0	0	0	0	0	0	0	0	0	0	0	0	0	0	0									1	1	1	0
	Vol Removal (Consent)	0	0	0	0	0	0	1	0	0	0	1	0	0	0	0	0	1	1												2	2
	Adjourned/part heard	0	0	0	0	0	0	0	0	0	0	0	0	1	0	0	0	1	0										3	0	0	2
	Cancelled	0	0	0	0	0	0	0	0	0	1	0	0	0	0	1	0	0	1												1	2
	Article 30(7)																1	0	0	0												1
	Review cases to be Heard	92	93	90	91	90	89	90	92	93	104	102	102	107	106	103	107	108	106										69	90	90	102

Representation

	Final Hearings-CCC													2009/10 FYE	2010/11 YTD	
	Struck off	Suspended	Conditions of Practice	Caution	No Further Action	Not Well Founded	NR	Referred to Health	Removed	Register entry amended	Restored	Not restored	Vol Removal (Consent)			Part Heard
Represented self	2	1	0	10	0	6	0	0	0	0	0	0	0	9	44	28
Representative	4	10	10	22	1	30	0	0	0	0	0	0	1	9	115	87
None	21	10	1	7	1	6	0	0	1	0	0	0	7	2	98	56
Total	27	21	11	39	2	42	0	0	1	0	0	0	8	20	257	171

Profession	Represented self	Representative	None	% of representation
Arts therapists	0	0	0	0
Biomedical scientists	2	3	6	45
Chiropodists & podiatrists	0	10	5	67
Clinical scientists	0	0	1	0
Dietitians	0	1	0	0
Hearing aid dispensers	0	1	2	0
Occupational therapists	3	9	8	60
ODPs	5	6	8	58
Orthoptists	0	0	0	0
Paramedics	11	27	10	79
Physiotherapists	4	17	6	78
Practitioner psychologists	0	4	3	57
Prosthetists & orthotists	0	1	0	100
Radiographers	3	7	5	67
SLTs	0	1	2	33

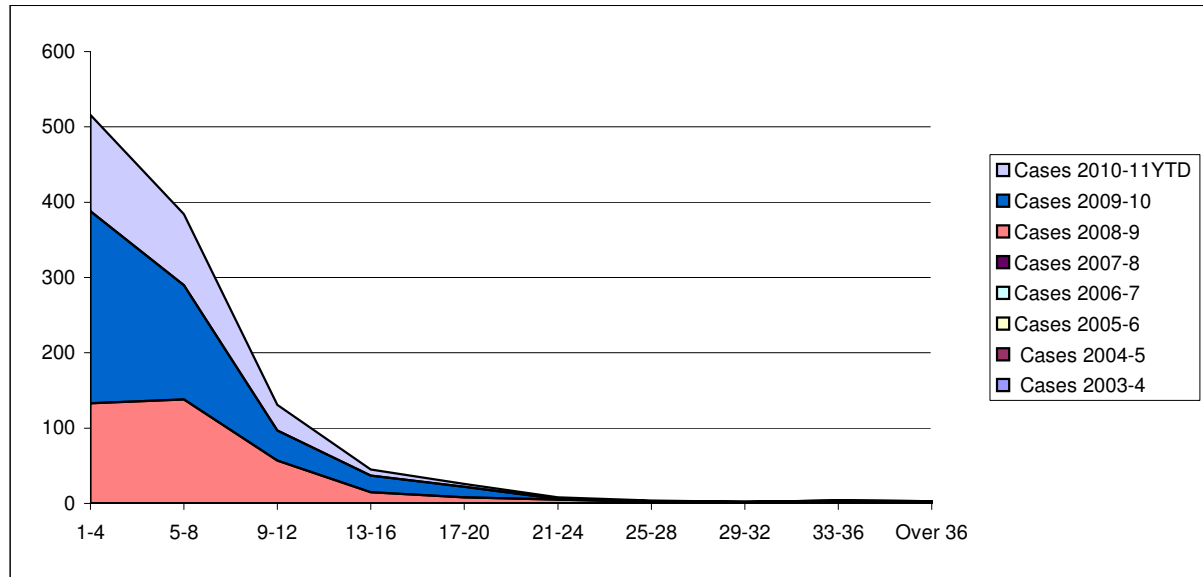
The above tables do not include cases that were adjourned, postponed or cancelled

	Final Hearings												
	Struck off	Suspended	Conditions of Practice	Caution	No Further Action	Not Well Founded	NR	Referred to Health	Removed	Register entry amended	Restored	Not restored	Part Heard
Arts therapists	0	0	0	0	0	0	0	0	0	0	0	0	0
Biomedical scientists	1	2	0	3	0	2	0	0	1	0	0	0	2
Chiropractists & podiatrists	3	1	2	5	0	3	0	0	0	0	0	0	0
Clinical scientists	0	0	1	0	0	0	0	0	0	0	0	0	0
Dietitians	0	1	0	0	0	0	0	0	0	0	0	0	0
Hearing aid dispensers	1	0	0	0	0	1	0	0	0	0	0	0	1
Occupational therapists	1	4	2	3	0	5	0	0	1	0	0	0	1
ODPs	3	4	1	6	1	3	0	0	0	0	0	0	1
Orthoptists	0	0	0	0	0	0	0	0	0	0	0	0	0
Paramedics	7	3	0	17	0	15	0	0	0	0	0	0	5
Physiotherapists	7	4	2	3	0	7	0	0	0	0	0	0	2
Practitioner psychologists	1	0	1	0	0	3	0	0	0	0	0	0	2
Prosthetists & orthotists	0	0	1	0	0	0	0	0	0	0	0	0	0
Radiographers	2	1	1	2	1	3	0	0	0	0	0	0	4
SLTs	1	1	0	0	0	0	0	0	0	0	0	0	1
Total 2010/11 YTD	27	21	11	39	2	42	0	0	2	0	0	0	19
Total 2009/10 FYE	64	40	15	46	3	76	0	2	3	1	0	0	7
Total 2008/2009 FYE	67	25	12	24	4	39	0	0			0	0	
Total 2007/2008 FYE	37	35	5	30	23	24	0	0			0	0	
Total 2006/2007 FYE	24	19	5	25	6	15	1	2			0	0	
Total 2005/2006 FYE	9	20	6	9	3	1	6	3			0	0	

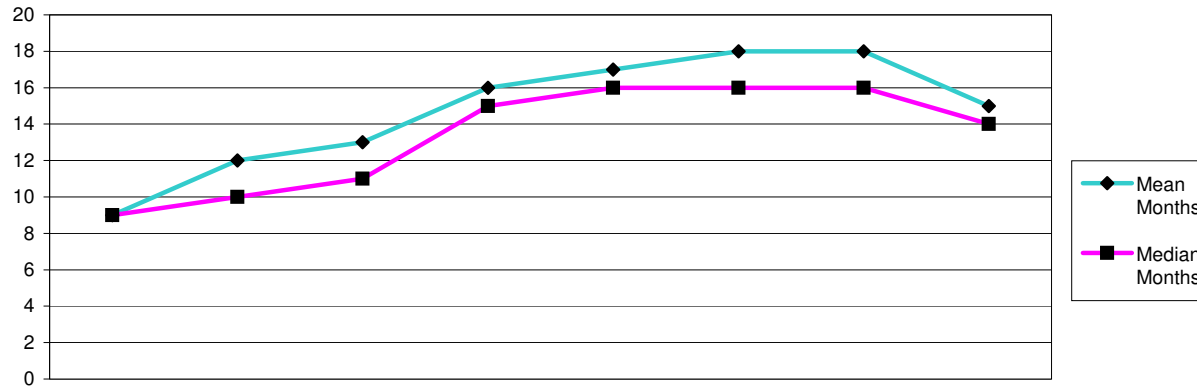
	Review Hearings											Article 30(7)
	Struck off	Suspension continued	Suspension revoked	Suspension revoked caution imposed	Suspension revoked conditions imposed	Conditions continued	Conditions revoked	Conditions revoked caution imposed	Conditions revoked suspension imposed	Adjourned/Part Heard	Vol Removal (Consent)	
Arts therapists	0	0	0	0	0	0	0	0	0	0	0	0
Biomedical scientists	1	2	0	1	0	1	1	1	0	0	0	0
Chiropractists & podiatrists	0	0	0	0	0	0	1	0	0	0	0	0
Clinical scientists	1	0	0	0	0	0	0	0	0	0	0	0
Dietitians	1	0	0	0	0	0	0	0	0	0	0	0
Hearing aid dispensers	0	0	1	0	0	0	0	0	0	0	0	0
Occupational therapists	1	2	1	0	1	0	0	0	0	0	3	1
ODPs	0	0	1	0	0	1	0	0	0	0	0	0
Orthoptists	0	1	0	0	0	0	0	0	0	0	0	0
Paramedics	1	1	0	2	0	0	2	0	0	0	0	0
Physiotherapists	3	2	0	0	1	1	2	0	0	0	0	0
Practitioner psychologists	0	0	0	0	0	1	0	0	0	0	0	0
Prosthetists & orthotists	1	0	0	0	0	0	0	0	0	0	0	0
Radiographers	2	3	0	0	0	0	1	0	0	0	0	0
SLTs	0	0	0	0	0	0	1	0	0	1	0	0
Total 2010/11 YTD	11	11	3	3	2	4	8	1	0	1	3	1
Total 2009/10 YTD	11	11	3	3	2	4	8	1	0	1	3	
Total 2008/2009 YTD	16	51	8	2	3	3	1	0	0	3	0	
Total 2007/2008 FYE	8	25	2	0	0	3	0	0	0	4	0	
Total 2006/2007 FYE	Not available											
Total 2005/2006 FYE	Not available											

		Month of Panel																																												
		2009												2010												2011																				
Months		Apr	May	Jun	Jul	Aug	Sep	Oct	Nov	Dec	Jan	Feb	Mar	Apr	May	Jun	Jul	Aug	Sep	Oct	Nov	Dec	Jan	Feb	Mar	Apr	May	Jun	Jul	Aug	Sep	Oct	Nov	Dec	Jan	Feb	Mar									
Cases awaiting ICP	0-4	122	139	137	171	193	197	209	191	191	175	200	204	175	182	177	189	195	167																											
	5-8	50	42	42	43	37	41	47	57	69	67	61	63	62	61	55	65	59	62																											
	9-12	14	16	17	23	21	18	16	15	12	20	19	25	27	27	33	31	28	24																											
	13-16	10	7	9	8	7	9	9	12	13	9	10	5	6	13	12	14	16	14																											
	17-20	2	3	1	2	3	4	3	3	3	5	5	5	5	4	4	2	3	5																											
	21-24	1	1	0	0	0	0	0	0	1	1	1	1	1	3	3	5	2	2																											
	25-28	2	1	1	0	0	0	0	0	0	0	0	0	1	1	1	1	1	1																											
	29-32	1	1	1	2	1	1	1	0	0	0	0	0	0	0	0	0	0	1	1																										
	over 33	2	1	1	0	1	1	1	1	1	0	0	0	0	0	0	0	0	0																											
Cases awaiting final hearing (from ICP)	1-4	80	85	95	91	99	91	97	104	111	118	132	121	152	151	134	119	104	100																											
	5-8	54	53	61	47	44	49	54	68	62	71	67	71	78	73	81	77	89	110																											
	9-12	18	22	25	29	41	26	34	21	19	20	18	32	33	33	35	33	41	29																											
	13-16	21	21	17	14	8	12	12	16	22	12	14	10	7	7	7	11	6	8																											
	17-20	14	17	12	10	5	6	8	6	3	2	3	2	7	7	9	5	4	3																											
	21-24	0	0	4	5	9	9	7	6	3	4	4	5	2	1	1	2	5	4																											
	25-28	2	0	1	1	1	1	2	2	3	2	1	0	1	1	1	1	1	0																											
	29-32	0	1	1	1	1	0	0	0	0	0	0	1	1	0	0	0	0	1																											
	over 33	0	0	0	0	0	1	0	0	0	0	0	0	0	0	0	0	0	0																											

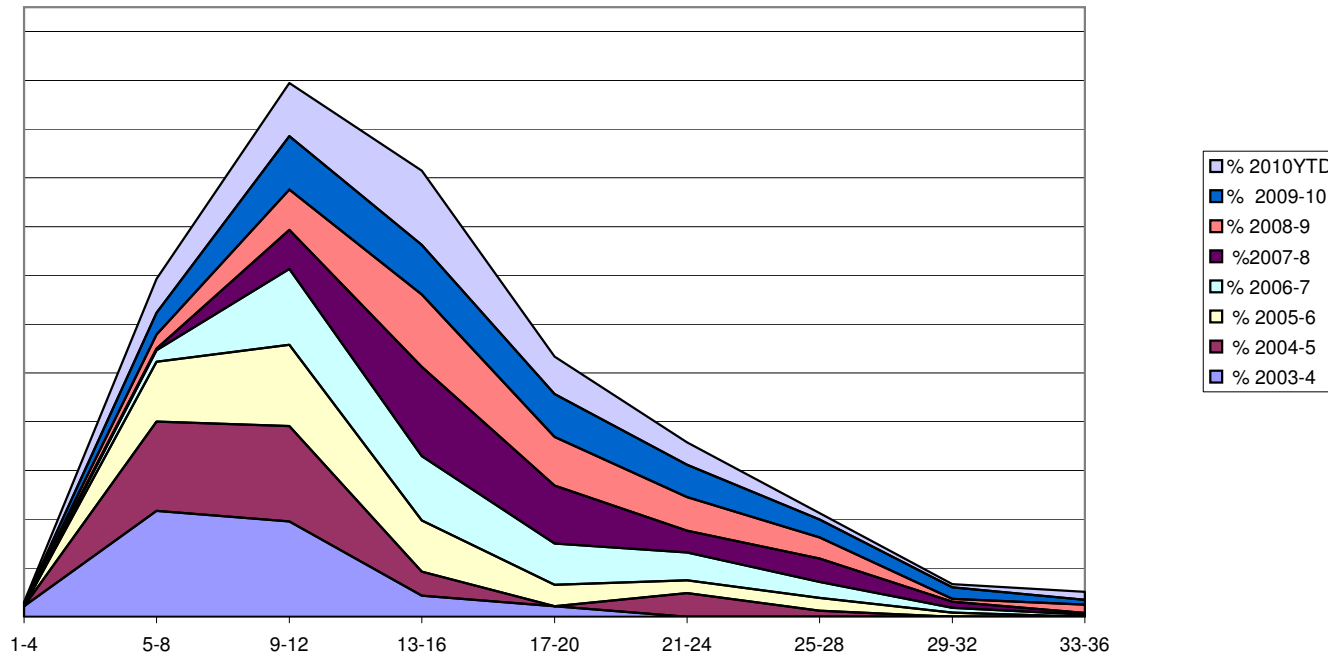
Health Professions Council Length of time: Cases Investigating Committee (excluding further information) 2003-4 to 2010-11 Fitness to Practise



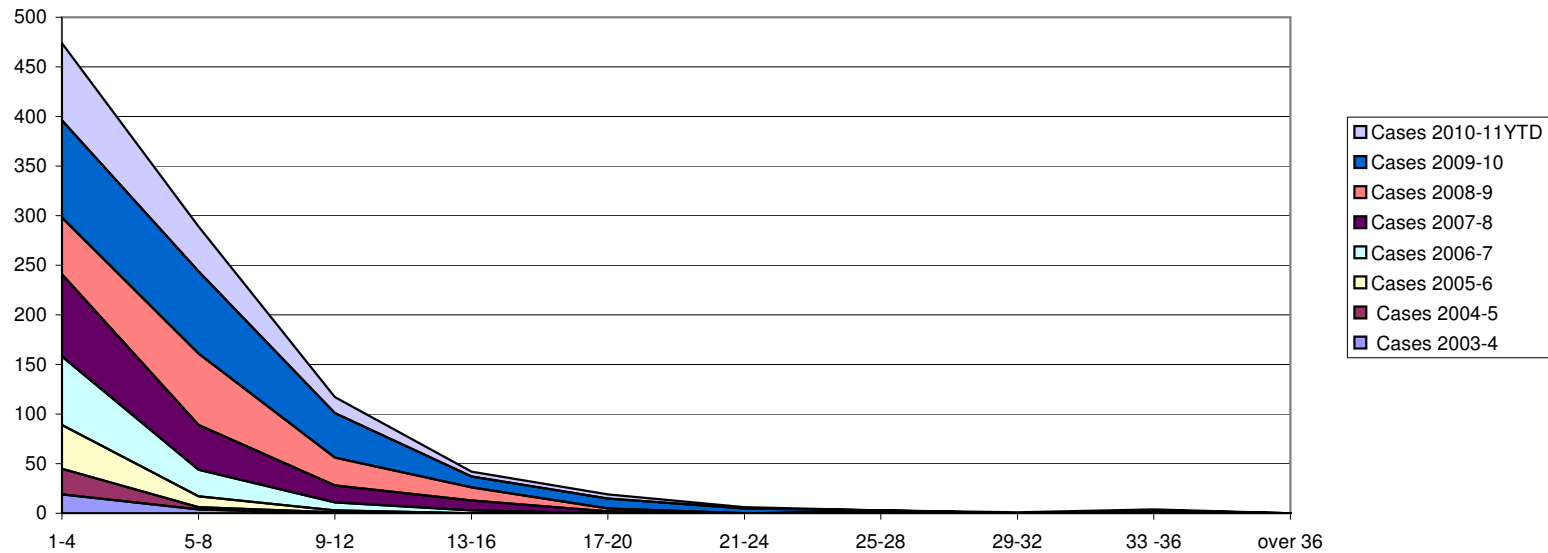
Number of Months	Cases 2003-4	Cases 2004-5	Cases 2005-6	Cases 2006-7	Cases 2007-8	Cases 2008-9	Cases 2009-10	Cases 2010-11YTD
1-4						133	255	128
5-8						138	152	94
9-12						57	40	34
13-16						15	22	8
17-20						8	14	4
21-24						5	1	2
25-28						2	1	1
29-32						1	1	0
33-36						3	1	0
Over 36			Not available			1	2	0
Mean Months						7	6	6
Median Months						5	4	5
Total Cases						363	489	271



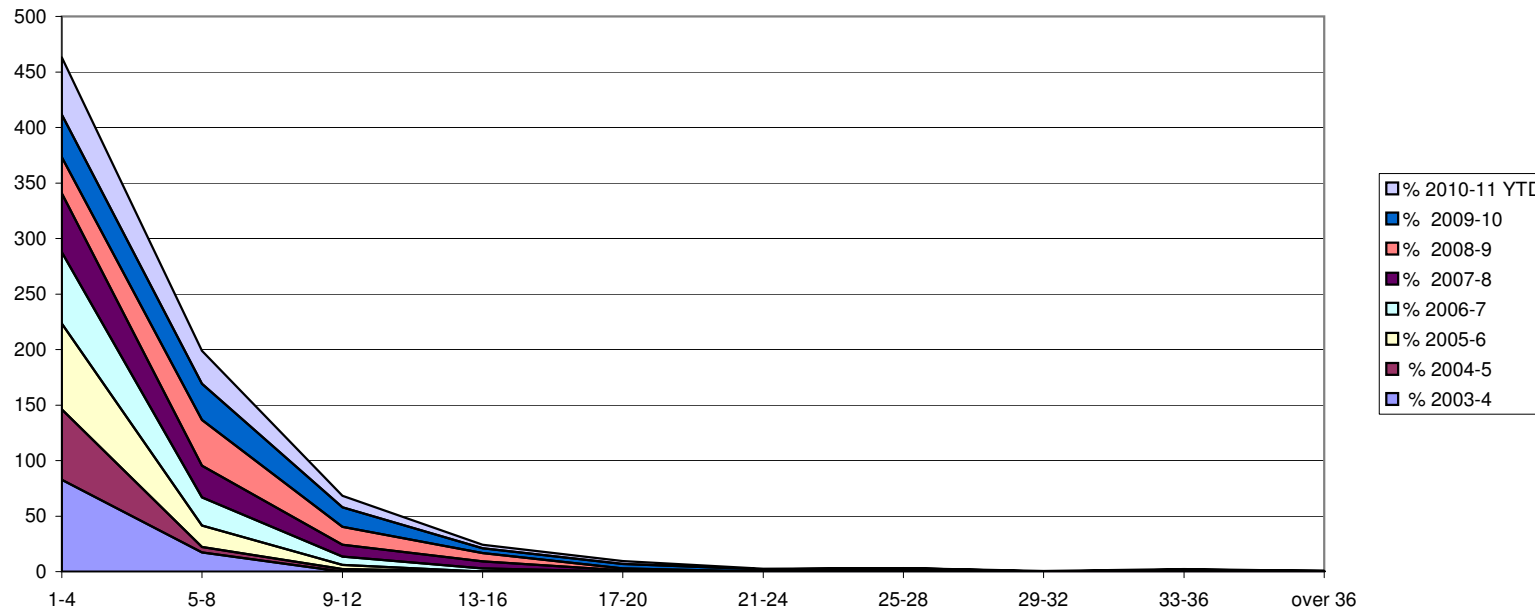
Number of Months	Cases 2003-4	Cases 2004-5	Cases 2005-6	Cases 2006-7	Cases 2007-8	Cases 2008-9	Cases 2009-10	Cases 2010-11 YTD
1-4	1	0	0	0	1	0	1	1
5-8	10	15	14	5	1	10	23	21
9-12	9	16	19	33	25	29	56	33
13-16	2	4	12	28	57	52	52	46
17-20	1	0	5	18	37	35	45	23
21-24	0	4	3	12	14	24	34	14
25-28	0	1	3	7	15	15	19	4
29-32	0	0	1	2	4	2	12	2
33-36	0	0	0	1	1	6	5	5
Over 36	0	0	0	0	0	2	9	2
Mean Months	9	12	13	16	17	18	18	15
Median Months	9	10	11	15	16	16	16	14
Total Cases	23	41	57	106	156	175	256	151



Number of Months	% 2003-4	% 2004-5	% 2005-6	% 2006-7	% 2007-8	% 2008-9	% 2009-10	% 2010YTD
1-4	4.3	0.0	0.0	0.0	0.6	0.0	0.4	0.7
5-8	43.5	36.6	24.6	4.7	0.6	5.7	9.0	13.9
9-12	39.1	39.0	33.3	31.1	16.0	16.6	21.9	21.9
13-16	8.7	9.8	21.1	26.4	36.5	29.7	20.3	30.5
17-20	4.3	0.0	8.8	17.0	23.7	20.0	17.6	15.2
21-24	0	9.8	5.3	11.3	9.0	13.7	13.3	9.3
25-28	0	2.4	5.3	6.6	9.6	8.6	7.4	2.6
29-32	0	0.0	1.8	1.9	2.6	1.1	4.7	1.3
33-36	0	0.0	0.0	0.9	0.6	3.4	2.0	3.3
Over 36	0	0.0	0.0	0.9	0.6	1.1	3.5	1.3



Number of Months	Cases 2003-4	Cases 2004-5	Cases 2005-6	Cases 2006-7	Cases 2007-8	Cases 2008-9	Cases 2009-10	Cases 2010-11YTD
1-4	19	26	44	69	83	57	98	78
5-8	4	2	11	27	45	72	83	45
9-12	0	1	2	8	17	28	45	16
13-16	0	0	0	3	10	13	11	5
17-20	0	0	0	0	2	3	10	4
21-24	0	0	0	0	0	0	5	1
25-28	0	1	0	0	0	0	2	0
29-32	0	0	0	0	0	0	0	1
33 -36	0	0	0	0	0	1	2	1
over 36	0	0	0	0	0	0	0	0
Mean Months	3	4	3	4.5	6	7	7	6
Meadian Months	3	3	3	3	4	6	5	4
Total Cases	23	41	57	107	157	175	256	151

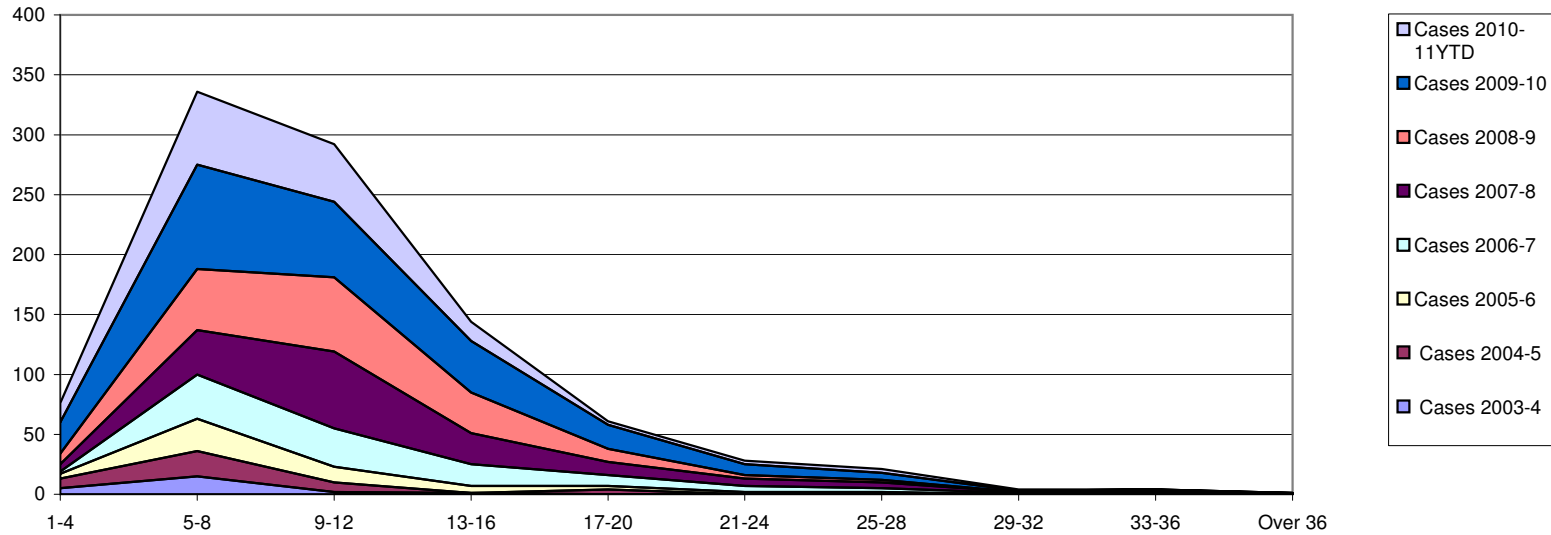


Number of Months	% 2003-4	% 2004-5	% 2005-6	% 2006-7	% 2007-8	% 2008-9	% 2009-10	% 2010-11 YTD
1-4	83	63	77	64	53	33	38	52
5-8	17	5	19	25	29	41	32	30
9-12	0	2	4	7	11	16	18	11
13-16	0	0	0	3	6	7	4	3
17-20	0	0	0	0	1	2	4	3
21-24	0	0	0	0	0	0	2	1
25-28	0	2	0	0	0	0	1	0
29-32	0	0	0	0	0	0	0	1
33-36	0	0	0	0	0	1	1	1
over 36	0	0	0	0	0	1	0	0

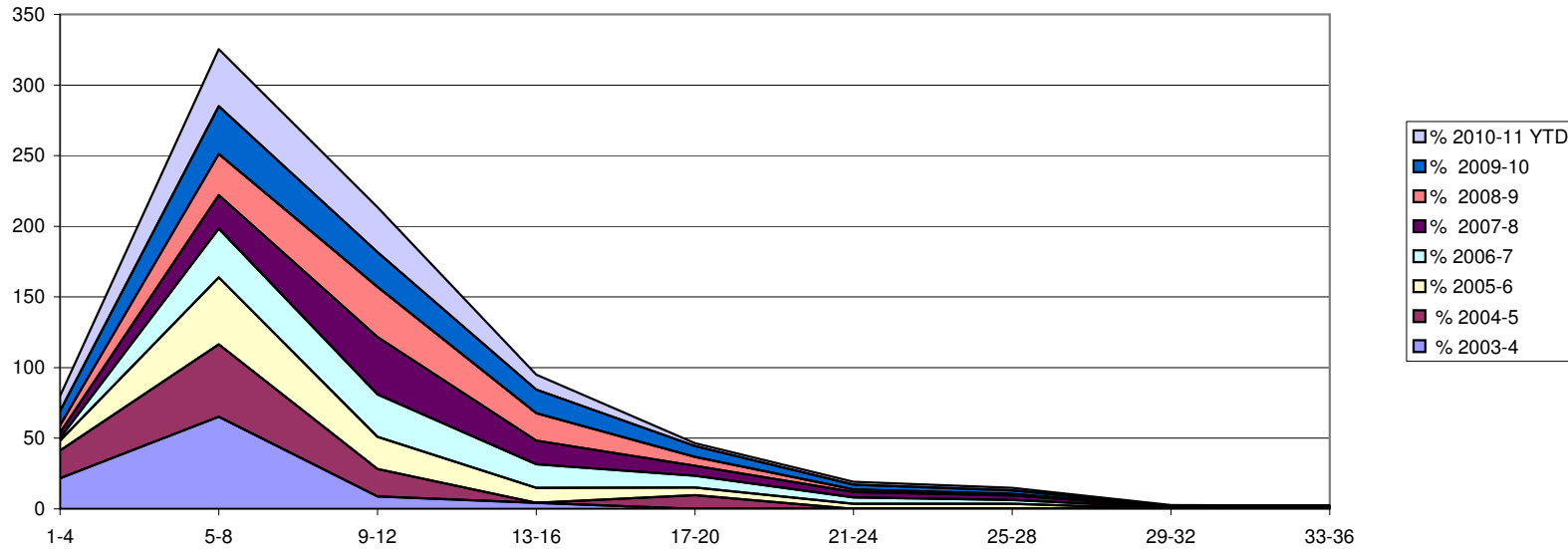
Health Professions Council

Investigating Panel - Case Conclusion (concluded final hearing cases)

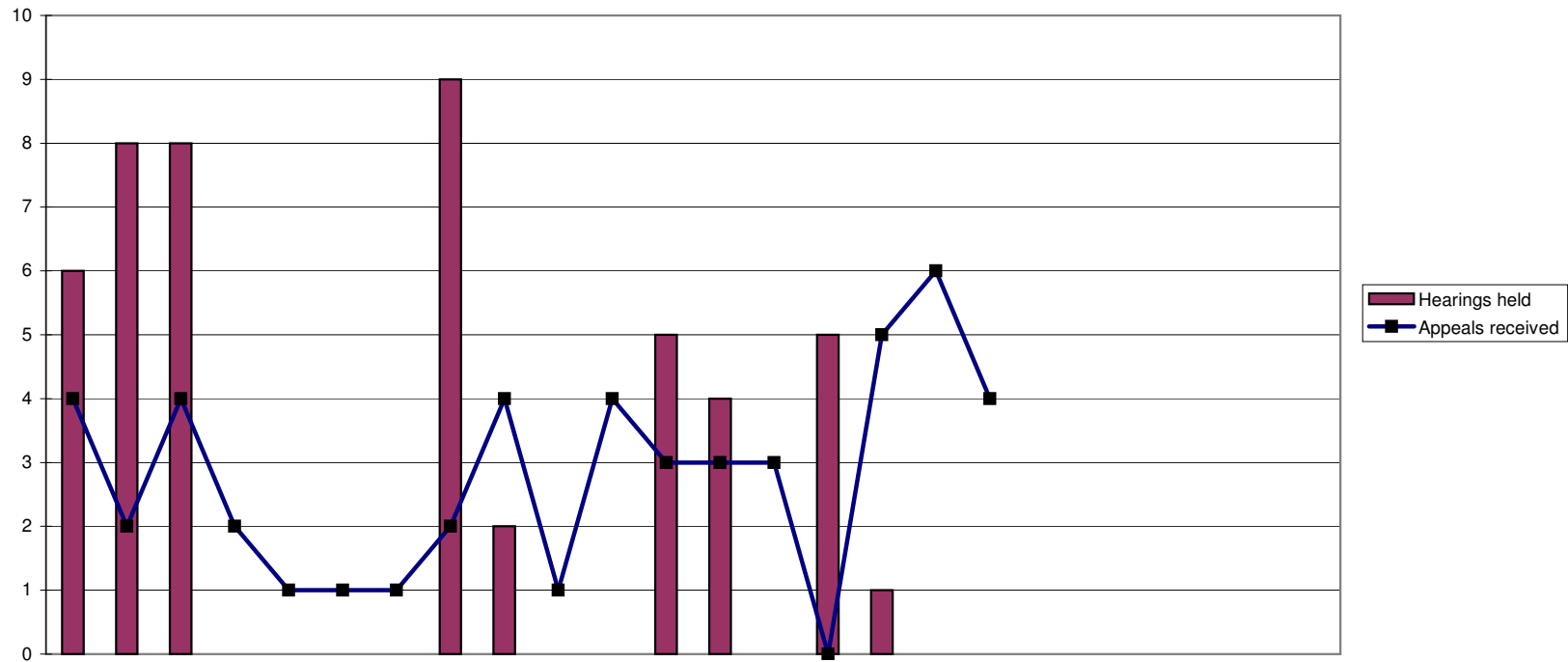
Fitness to Practise Department



Number of Months	Cases 2003-4	Cases 2004-5	Cases 2005-6	Cases 2006-7	Cases 2007-8	Cases 2008-9	Cases 2009-10	Cases 2010-11YTD
1-4	5	8	4	2	6	9	26	16
5-8	15	21	27	37	37	51	87	61
9-12	2	8	13	32	64	62	63	48
13-16	1	0	6	18	26	34	43	16
17-20	0	4	3	9	11	11	20	3
21-24	0	0	2	5	6	3	9	3
25-28	0	0	2	3	5	2	6	3
29-32	0	0	0	1	1	0	1	1
33-36	0	0	0	0	1	2	1	0
Over 36	0	0	0	0	0	1	0	0
Mean Months	6	8	10	11.5	12	11	11	9
Median Months	5	7	8	10	11	10	9	8
Total Cases	23	41	57	107	157	175	256	151

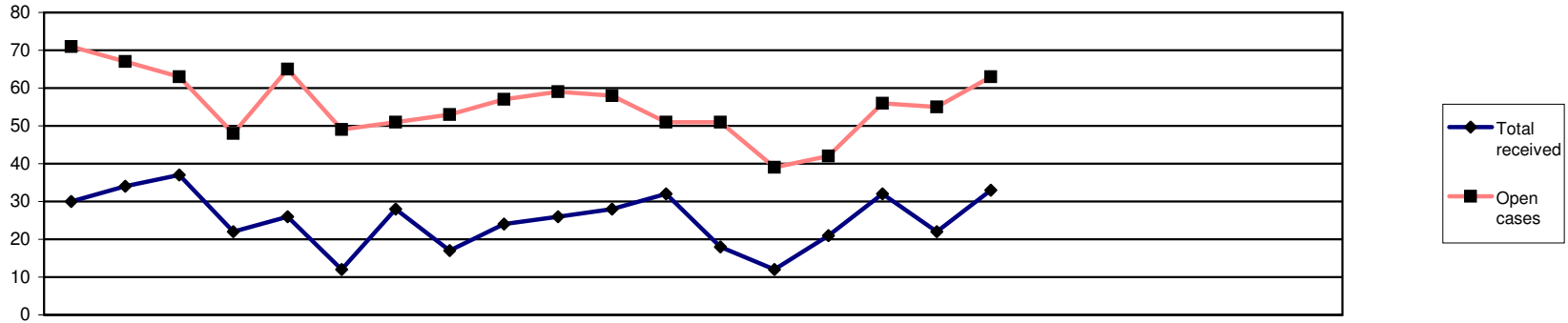


Number of Months	% 2003-4	% 2004-5	% 2005-6	% 2006-7	% 2007-8	% 2008-9	% 2009-10	% 2010-11 YTD
1-4	22	20	7	2	4	5	10	11
5-8	65	51	47	35	24	29	34	40
9-12	9	20	23	30	41	35	25	32
13-16	4	0	11	17	17	19	17	11
17-20	0	10	5	8	7	6	8	2
21-24	0	0	4	5	4	2	4	2
25-28	0	0	4	3	3	1	2	2
29-32	0	0	0	1	1	0	0	1
33-36	0	0	0	0	1	1	0	0
Over 36	0	0	0	0	1	1	0	0



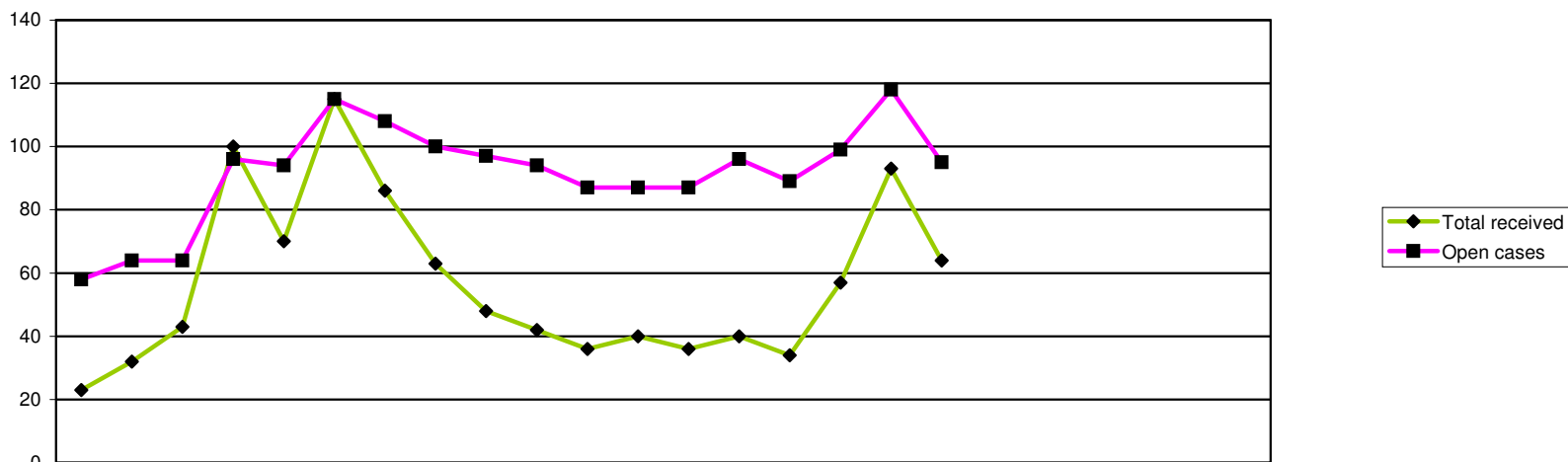
	2009			2010									2011												
	Apr	May	Jun	Jul	Aug	Sep	Oct	Nov	Dec	Jan	Feb	Mar	Apr	May	Jun	Jul	Aug	Sep	Oct	Nov	Dec	Jan	Feb	Mar	
Appeals received	4	2	4	2	1	1	1	2	4	1	4	3	3	3	0	5	6	4							
Reviewed	8	9	8	0	0	0	0	9	2	0	0	5	4	0	5	0	0	0							
Hearings held	6	8	8	0	0	0	0	9	2	0	0	5	4	0	5	1	0	0							
Adjourned/postponed	2	1	0	0	0	0	0	0	0	0	0	1	1	0	1	0	0	0							
Withdrawn	0	0	0	0	0	0	0	0	0	0	1	0	1	0	0	0	0	1							
Allowed	1	5	1	0	0	0	0	4	1	0	0	2	2	0	4	0	0	0							
Dismissed	0	1	3	0	0	0	0	1	1	0	0	1	0	0	0	0	0	0							
Substitute decision	0	0	1	0	0	0	0	2	0	0	0	0	0	0	0	0	0	0							
Remit to ETC	5	2	3	0	0	0	0	2	0	0	0	1	0	0	0	0	0	0							
Current active cases	22	16	7	9	11	12	13	6	8	9	12	11	10	13	9	13	18	21							

2005/6 FYE	2006/7 FYE	2007/8 FYE	2008/9 FYE	09/10 FYE	10/11 YTD
91	104	41	55	29	21
266	90	65	55	41	9
266	90	65	55	38	10
19	20	10	9	4	2
13	16	15	2	1	2
128	33	29	23	14	6
88	29	31	17	7	0
0	0	0	0	0	0
31	6	4	7	13	0



	2009			2010									2011												
	Apr	May	Jun	Jul	Aug	Sep	Oct	Nov	Dec	Jan	Feb	Mar	Apr	May	Jun	Jul	Aug	Sep	Oct	Nov	Dec	Jan	Feb	Mar	
Public	0	1	13	3	2	2	4	1	1	2	1	2	1	0	3	3	2	1							
Police	3	2	4	3	4	3	1	5	6	3	1	3	0	0	1	0	2	0							
HPC	0	0	0	0	0	0	0	0	0	0	1	1	0	0	0	4	0	0							
Anonymous	2	2	4	1	4	2	4	1	0	7	2	2	0	3	1	2	7	4							
Professional	25	29	16	15	16	5	19	10	17	14	23	24	17	9	16	23	11	28							
Total received	30	34	37	22	26	12	28	17	24	26	28	32	18	12	21	32	22	33							
Visits	0	1	1	0	1	0	0	0	0	0	0	0	0	0	0	0	0	0							
Open cases	71	67	63	48	65	49	51	53	57	59	58	51	51	39	42	56	55	63							

2005/6	2006/7	2007/8	2008/9	09/10	10/11
FYE	FYE	FYE	FYE	FYE	YTD
53	21	42	56	32	10
31	38	27	44	38	3
10	10	6	3	2	4
50	78	38	47	31	17
225	137	103	233	213	104
369	284	216	383	316	138
			3	3	0



	2009												2010												2011												2005/6	2006/7	2007/8	2008/9	09/10	10/11
	Apr	May	Jun	Jul	Aug	Sep	Oct	Nov	Dec	Jan	Feb	Mar	Apr	May	Jun	Jul	Aug	Sep	Oct	Nov	Dec	Jan	Feb	Mar	Apr	May	Jun	Jul	Aug	Sep	Oct	Nov	Dec	Jan	Feb	Mar	FYE	FYE	FYE	FYE	FYE	YTD
Received																																										
Renewal	0	1	11	9	14	54	30	21	11	2	1	0	1	1	1	0	1	0	36	27	81	43	154	4																		
Readmission	2	5	3	6	5	5	5	7	5	3	2	5	3	7	9	5	14	4	33	40	34	94	53	42																		
Admission	10	10	15	60	37	36	33	20	21	19	8	13	22	12	9	31	59	39	165	150	158	248	282	172																		
Self referral	11	16	14	25	14	20	18	15	11	18	25	22	10	20	15	21	19	21	54	86	158	192	209	106																		
Total received	23	32	43	100	70	115	86	63	48	42	36	40	36	40	34	57	93	64	288	303	431	577	698	324																		
Considered																																										
Considered by panel	16	21	23	37	52	30	43	48	32	30	32	23	32	28	33	38	49	61	n/a	n/a	256	399	387	241																		
Referred to FTP	2	2	5	6	6	1	8	10	4	4	7	6	4	4	9	8	5	6	n/a	n/a	37	41	61	36																		
Admission rejected	0	1	0	0	0	0	0	1	0	0	0	0	1	0	1	0	1	0	n/a	n/a	2	6	2	3																		
Readmission rejected	0	3	0	0	0	0	0	1	0	2	1	0	1	0	3	2	1	2	n/a	n/a	3	8	7	9																		
Renewal rejected	0	0	0	0	0	0	0	1	0	0	0	0	0	0	0	0	0	0	n/a	n/a	0	2	1	0																		
Not referred to FTP	2	6	4	5	3	4	7	6	2	8	12	7	9	7	8	8	9	11	n/a	n/a	34	82	66	52																		
Admission accepted	10	7	11	24	37	22	24	18	21	11	12	7	13	14	8	15	27	36	n/a	n/a	150	204	204	113																		
Readmission accepted	2	2	2	2	6	2	1	7	3	3	0	2	4	3	3	5	6	6	n/a	n/a	19	51	32	27																		
Renewal accepted	0	0	1	0	0	1	3	4	0	2	0	1	0	0	1	0	0	0	n/a	n/a	1	5	12	1																		
Closed before panel	6	6	16	28	10	15	11	4	5	14	11	17	3	3	8	7	21	28					143	70																		
Open cases	58	64	64	96	94	115	108	100	97	94	87	87	87	96	89	99	118	95	n/a	n/a	75	75	87	95																		