

Fitness to Practise – Kelly Johnson

Number of Allegations

Between October 2011 and January 2011, 266 allegations/enquiries were received. It was forecasted that HPC would receive 838 cases over the course of 2010-11. It is now anticipated that 756 allegations/enquiries will be received over the course of the financial year 2010-11.

Number of open cases pre ICP

At the end of January 2011, there was open pre ICP case load of 380 cases. At the start of the financial year, there were 390 open cases. The lower open case load, allows the HPC to be more proactive in chasing and reviewing cases as appropriate.

Length of time

For cases that have been considered at Investigating Committee panel between April and January 2011 the mean and median length of time is 6 and 5 months.

At the end of January there were 61 cases over 5 months old within the pre investigating committee remit where a date for a an Investigating Committee Panel had not yet been set. In 42 cases we are awaiting further information from a third party. Case Managers are active in their review of these cases.

Case to Answer percentage

Of cases considered by an Investigating Committee, the case to answer percentage between April and January 2011 was 58%. Taking into account cases that are closed before consideration by an investigating committee (for instance as they do not meet the standard of acceptance for allegations), the percentage of cases referred to final hearing between April and January 2011 was 38%.

Number of cases awaiting hearing

At the end of January there were 242 cases in the remit of the Conduct and Competence or Health Committee. 138 of those cases have a hearing date fixed or proceedings have started but not concluded. At the end of January there were a further 31 cases that are ready to fix and the scheduling team is in the process of fixing those cases. There were 77 cases over five months old that are not ready to fix and in those cases a number of complex issues have arisen since their referral by the Investigating Committee. The scheduling team fixed 51 final hearings, 5 review hearings, 18 interim order hearings in January 2011 which was the most hearings HPC has ever been able to fix in month. This ensures that we remain on target to conclude 325 final hearings by the end of the financial year

Length of time

Of the cases concluded at final hearing between April 2010 and January 2011, the total length of time taken for a case to

conclude is a mean of 15 months and a median of 14 months which compares to a mean and median of 18 and 16 months for 2009-10. This is an improvement in both the length of time for a case to get to an investigating committee and from investigating committee to final hearing.

Interim Orders

7 applications have been made to the High Court between April and December 2010 to extend the period for which an interim order has effect. All of the applications were granted.

Health and Character

From 1 January 2011 new self-referral cases will no longer be logged as health and character declarations for future consideration by a Registration Panel, but will be logged as Fitness to Practise cases. They will then follow the FTP process with the HPC acting as the complainant providing that they meet the standards of acceptance for such cases. Existing self-referral cases will continue to go through the Registration Panel process.

Meetings

4 October 2010 Welsh Ambulance Service
5 October 2010 Kingsley Napley
6 October 2010 Charter
6 October 2010 North West Ambulance Service
6 October 2010 Kennington Police
7 October 2010 Psychotherapists and Counsellors Stakeholder event

8 October 2010 Legal Assessor Review day
11 October 2010 Training with Council members
12 October 2010 Val Cross and Chris Davis, GSCC
12 October 2010 Unite the Union
15 October 2010 Charter
18 October 2010 Kingsley Napley
18 October 2010 Paul Philip, General Medical Council
19 October 2010 Unions
26 October 2010 Scottish Regulation Event
28 October 2010 Chris Savory and Vaughn Williams, GSCC
1 November 2010 Kingsley Napley
8 November 2010 Conference with Counsel
17 November 2010 Ros Hayles and Tim Bailey, CHRE
17 November 2010 GSCC Unions
18 November 2010 Mike Andrews GSCC
24 November 2010 East Midland Ambulance Service
29 November 2010 Criteria Fieldwork
30 November 2010 Conference with Counsel
3 December 2010 Blake Laphorne
6 December 2010 RNID
7 December 2010 Barry Baines, NMC
8 December 2010 Gary Lewin, Football Association
14 December 2010 Kingsley Napley
14 December 2010 High Court - Stephen Brennan
16 December 2010 General Social Care Council
5 January 2011 NHS Professionals
6 January 2011 Care Quality Commission
21 January 2011 Jim Petter, College of Paramedics
21 January 2011 High Court – Stephen Brennan
21 January 2011 Sally Feaver – Directors of OT Education
24 January 2011 Kingsley Napley

24 January 2011 KPMG
24 January 2011 Care Councils Regulatory Affairs Directors
26 January 2011 Robert Gordon University
27 January 2011 Benjamin James, Bircham Dyson Bell
28 January 2011 National Executive Committee, Association of Educational Psychologists
28 January 2011 General Social Care Council
28 January 2011 Blake Laphorne
31 January 2011 General Social Care Council
31 January 2011 KN/HPC Efficiency Committee
31 January 2011 BASW

Other

Resources

Siobhan Carson was promoted to the position of case manager in September 2010.

Salma Begum was appointed to the position of PA to the Director of Fitness to Practise and took up her position in November. Yinka Alalade joined the department as a scheduling officer in November 2010.

Corrado Palmas was appointed to the position of case support officer in November 2010. Petrina Baker (previously a registration advisor) has been appointed to the position of team administrator and joined the department in January 2011.

Melanie Harel and Deborah Oluwole (previously registration advisors) and Tamara Etmuss-Noble have joined the

department as scheduling officers and Eleanor Wilson has moved into the role of Hearings officer.

Partners

Recruitment for new lay partners took place over October 2010. In excess of 300 applications were received for the role. Appointments have now taken place with training taking place on 4 and 5 November 2010 for the newly appointed lay, dietitian, orthoptist and chiropodist/podiatrist panel members.

Refresher training for existing panel members has continued to take place over the Autumn and Winter months.

Appeals

The High Court handed down judgement in the case of Stephen Brennan on 21 January 2011. The decision of the panel to direct the Registrar to strike Mr Brennan from the register was quashed and the case remitted back to the same panel for reconsideration as to sanction. The judge quashed this decision on the basis of poor reasoning.

There are four other cases where registrant's have appealed the decision of the panel and we are waiting dates from the High Court or the Court of Session. There is one further case where a complainant is seeking judicial review of the decision not to refer the case to final hearing and another case where the complainant is seeking to take HPC to the small claims court.

Discontinuance

Since the introduction of the new practice note in December 2010, two applications for discontinuance have been considered and granted by a final hearing committee.

Independent Safeguarding Authority

HPC has made 53 referrals to the Independent Safeguarding Authority in accordance with its duties under the Safeguarding Vulnerable Groups Act. We have received 11 barring notices.

Biomedical Scientist cases

At the last meeting of the Committee, the Committee requested further information regarding the number of cases received concerning Biomedical Scientists. The Committee will note from the statistical information provided, that this figure is now in line with previous years.

Care Quality Commission

A Memorandum of Understanding has been signed with the CQC.

CHRE

The second audit of the initial stages of HPC's fitness to practice process took place in December 2010. At the time of

writing this report we are waiting to receive the draft report from CHRE

Management Information Pack

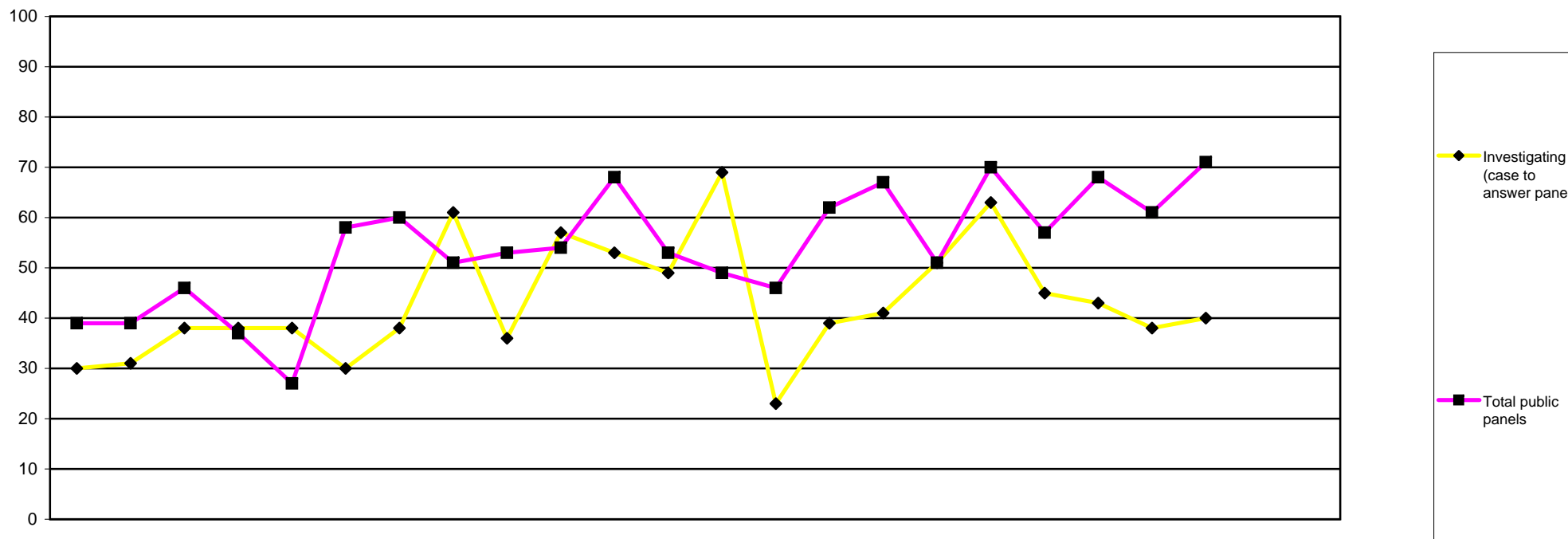
Kelly Johnson, Director of Fitness to Practise
Fitness to Practise Figures for April 2010 to 2011 to
Fitness to Practise Committee



hpc health
professions
council

Management Reporting Information to Executive Management Team
Fitness to Practise
Figures for April to 2010

Fitness to Practise	Total Cases Considered	25
	Enquiries and allegations: source	26
	Enquiries and Allegations: Profession & source of complaint	27
	Total Investigating Panel decisions and referrals	28
	Investigating Panel Decisions by profession and source of allegation	29
	Interim Orders by profession	30
	Panel Hearings, Decisions Conduct and Competence Committee	31
	Panel Hearings Decisions Health and Investigating	32
	Panel Hearings Decisions CCC and HC Review	33
	Final hearings (CCC and HC) representation	34
	Hearings: decisions by profession	35
	Length of time: Allegations	36
	Length of time: Cases Investigating Committee 2003-4 to 2009-10	37
	Allegations made: conclusion of final hearing 2003-4 to 2009-10	38
	Allegations made - conclusion of final hearing percentages	39
	Allegations made: Investigating Panel 2003-4 to 2009-10	40
	Allegations made - Investigating Panel percentages	41
	Investigating Panel - Case Conclusion (concluded final hearing cases)	42
	Investigating Panel - Case Conclusion percentages	43
Registration Appeals	Registration Appeals	44
Protection of Title	Protection of Title	45
Health and Character	Health and Character Declarations	46



	2009			2010									2011									2007/8	2008/9	09/10					
	Apr	May	Jun	Apr	May	Jun	Jul	Aug	Sep	Oct	Nov	Dec	Jan	Feb	Mar	Apr	May	Jun	Jul	Aug	Sep	Oct	Nov	Dec	Jan	Feb	Mar	FYE	FYE
Investigating (case to answer panels)	30	31	38	38	38	30	38	61	36	57	53	49	69	23	39	41	51	63	45	43	38	40	297	363	499				
Investigating (incorrect entry)	1	1	0	0	0	0	0	0	0	0	1	1	0	0	1	1	0	0	0	0	0	0	0	0	1	19	1	4	
Conduct & Competence	20	19	27	26	24	35	36	28	31	34	33	35	29	27	33	45	26	38	34	38	29	44	176	203	348				
Health	1	0	0	0	0	2	1	1	0	3	1	0	1	0	2	1	3	1	0	4	2	2	9	3	9				
Review cases	3	9	8	2	9	9	10	14	8	9	10	5	8	3	13	7	6	14	9	16	16	5	67	93	96				
Interim order (application)	9	2	3	2	3	4	2	2	7	4	5	3	4	7	2	7	5	4	2	5	2	3	20	30	46				
Interim order (review)	5	8	8	7	5	8	11	6	7	4	18	9	7	9	11	6	11	13	12	5	12	16	52	54	96				

Total public panels	39	39	46	37	27	58	60	51	53	54	68	53	49	46	62	67	51	70	57	68	61	71	343	384	599
Total panels	69	70	84	75	79	88	98	112	89	111	121	102	118	69	101	108	102	133	102	111	99	111	640	747	1098

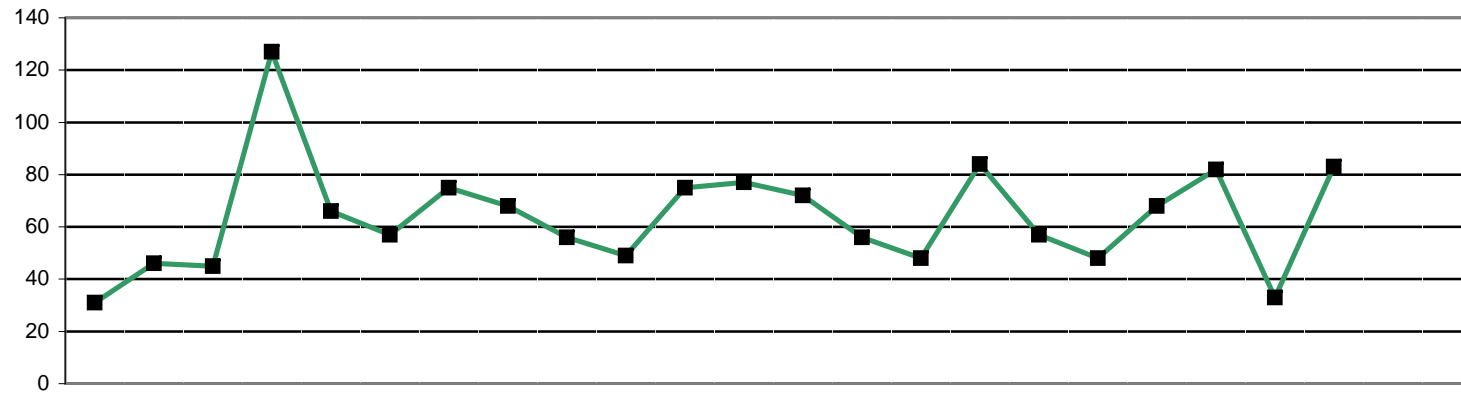
This table displays how many cases were considered by each type of panel

ating
panels)

blic

10/11 YTD
452
3
343
16
97
41
102

602
1054



■ Total allegations/enquiries received

		2009			2010								2011								2005/6	2006/7	2007/8	2008/9	09/10	10/11								
		Apr	May	Jun	Jul	Aug	Sep	Oct	Nov	Dec	Jan	Feb	Mar	Apr	May	Jun	Jul	Aug	Sep	Oct	Nov	Dec	Jan	Feb	Mar	FYE	FYE	FYE	FYE	FYE	YTD			
Source of enquiry	Total enquiries	5	19	17	45	19	22	24	19	15	15	14	29	17	17	21	29	17	14	18	30	10	44	Not recorded						109	142	243	217	
	Employer	3	9	8	10	8	10	15	5	4	2	3	1	3	5	5	8	2	1	4	6	2	4							44	50	78	40	
	Public	0	8	4	30	6	10	4	4	9	11	7	21	8	10	11	10	8	6	8	18	7	18							32	42	114	104	
	Police	0	0	2	0	0	0	0	0	1	0	0	1	0	0	0	1	0	0	0	0	0	0							0	3	4	4	1
	Professional body	0	0	0	0	0	0	0	0	0	0	0	0	0	0	0	0	0	0	0	0	0	0							0	1	2	0	0
	Registrant	1	1	1	2	1	1	2	6	1	0	0	2	6	1	5	5	4	3	3	3	3	1							7	13	19	18	38
	Other	0	0	0	2	2	1	1	3	0	1	3	1	0	0	0	0	0	0	0	0	0	0							2	2	10	14	2
	Article 22(6)/Anon	1	1	2	1	2	0	2	1	0	1	1	3	0	1	0	5	3	4	3	3	3	0							13	14	15	15	32
Source of allegation	Total allegations	26	27	28	82	47	35	51	49	41	34	61	48	55	39	27	55	40	34	50	52	23	39	#N/A	#N/A	316	322	315	341	529	414			
	Employer	12	21	12	26	13	10	18	11	11	15	20	13	21	19	12	15	9	17	13	17	7	16	113	164	127	149	182	146					
	Public	3	1	7	33	16	8	14	15	15	8	17	15	21	10	10	12	15	10	15	14	6	6	61	77	76	67	152	119					
	Police	3	2	2	4	4	4	2	2	2	5	3	3	4	1	1	5	3	1	2	2	0	4	27	31	32	32	36	23					
	Professional body	0	0	0	0	0	1	0	0	0	0	0	0	1	0	0	0	0	1	1	0	0	0	0	1	6	1	1	3					
	Registrant	4	1	1	3	3	4	5	6	2	2	5	9	0	1	1	2	4	0	6	5	2	5	30	16	22	30	45	26					
	Other	1	0	1	6	1	2	3	2	2	0	1	2	3	2	0	2	0	0	0	0	0	2	4	13	7	3	14	21	13				
	Article 22(6)/Anon	3	2	5	10	10	6	9	13	9	4	15	6	5	6	3	19	9	5	13	14	6	4	57	23	49	48	92	84					
Allegation type	Misconduct	14	16	13	53	32	23	41	33	28	23	42	36	41	30	18	40	30	31	39	46	21	27	205	228	177	223	354	323					
	Lack of competence	6	4	10	15	8	7	7	7	5	6	10	6	4	2	5	4	1	0	5	1	1	0	33	44	29	50	91	23					
	Convict/caution	5	6	4	12	4	5	3	7	5	5	6	6	8	7	3	7	6	3	5	4	1	8	41	41	49	51	68	52					
	Health	1	0	0	1	1	0	0	1	1	0	0	0	2	0	1	1	1	0	1	0	0	0	2	1	1	7	5	6					
	Other regulator	0	0	0	0	0	0	0	0	0	0	0	0	0	0	0	0	1	0	0	0	0	0	1	0	2	1	0	1					
	Incorrect or fraudulent entry	0	1	1	1	2	0	0	1	2	0	2	0	0	0	0	0	0	0	0	1	0	0	33	3	4	6	10	1					
	Not classified	0	0	0	0	0	0	0	0	0	0	0	0	0	0	0	3	1	0	0	0	0	0	24	3	0	0	0	4					
Inclusion on a barring list							N/A						0	0	0	0	0	0	0	0	0	4												
Total allegations/enquiries received		31	46	45	127	66	57	75	68	56	49	75	77	72	56	48	84	57	48	68	82	33	83	314	318	424	483	772	631					

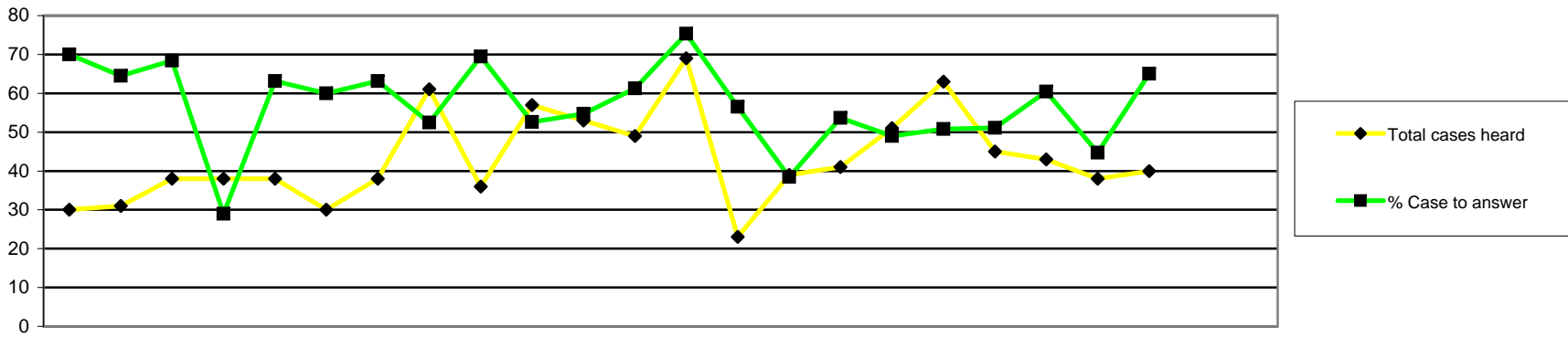
Health Professions Council

Enquiries and Allegations: Profession & source of complaint April 2010 - January 2011

Fitness to Practise Department

	Professional						Article 22(6)/Anon
	Employer	Public	Police	Body	Registrant	Other	
Arts therapists	4	1	0	0	2	0	2
Biomedical scientists	17	3	0	0	2	0	8
Chiropodists & podiatrists	14	27	4	0	9	0	4
Clinical scientists	3	2	0	0	0	0	4
Dietitians	6	0	0	0	2	0	1
Hearing aid dispensers	11	28	0	2	0	1	0
Occupational therapists	13	16	2	0	11	3	9
ODPs	13	3	2	1	2	0	7
Orthoptists	0	0	0	0	0	0	0
Paramedics	50	23	4	0	7	2	61
Physiotherapists	21	34	7	0	14	4	7
Practitioner psychologists	7	78	0	0	11	4	4
Prosthetists & orthotists	0	0	0	0	1	0	0
Radiographers	21	1	3	0	0	1	6
SLTs	7	7	1	0	3	1	2
Total	187	223	23	3	64	16	115

Total 2007/8	Total 2008/9	Total 2009/10	Total to date
16	10	5	9
26	43	39	30
40	62	76	58
6	8	4	9
14	1	12	9
			42
45	55	79	54
38	55	37	28
3	0	2	0
94	100	162	147
85	95	127	87
N/A	N/A	149	104
3	6	7	1
32	34	47	32
22	14	26	21
424	483	772	631



		2009			2010									2011									2006/7	2007/8	2008/9	09/10	10/11			
		Apr	May	Jun	Jul	Aug	Sep	Oct	Nov	Dec	Jan	Feb	Mar	Apr	May	Jun	Jul	Aug	Sep	Oct	Nov	Dec	Jan	Feb	Mar	FYE	FYE	FYE	FYE	YTD
Case to Answer	Total cases heard	30	31	38	38	38	30	38	61	36	57	53	49	69	23	39	41	51	63	45	43	38	40		178	299	363	499	452	
	Referred to CCC (Reg representations)	13	13	20	7	14	12	18	21	18	19	19	20	34	9	6	14	15	18	14	19	11	15			97	126	194	155	
	Referred to CCC (Rep representations)	0	1	1	2	2	1	2	2	3	3	1	2	3	0	0	2	2	2	2	3	1	4			25	14	20	19	
	Referred to CCC (No representations)	6	5	4	2	7	5	3	9	4	7	8	7	10	4	8	6	5	12	6	4	5	7			57	60	67	67	
	Referred to HC (Reg representations)	1	1	0	0	1	0	1	0	0	0	1	1	2	0	0	0	1	0	0	0	0	0			3	5	6	3	
	Referred to HC (Rep representations)	0	0	0	0	0	0	0	0	0	0	0	0	0	0	1	0	1	0	0	0	0	0			2	0	0	2	
	Referred to HC (No representations)	0	0	1	0	0	0	0	0	0	0	0	0	3	0	0	0	1	0	1	0	0	0			1	0	1	5	
	Referred to IC (Reg representations)	1	0	0	0	0	0	0	0	0	0	0	0	0	0	0	0	0	0	0	0	0	0			1	0	1	0	
	Referred to IC (Rep representations)	0	0	0	0	0	0	0	0	0	0	0	0	0	0	0	0	0	0	0	0	0	0			0	0	0	0	
	Referred to IC (No representations)	0	0	0	0	0	0	0	0	0	1	0	0	0	0	0	0	0	0	0	0	0	0			0	1	1	0	
	Total case to answer	21	20	26	11	24	18	24	32	25	30	29	30	52	13	15	22	25	32	23	26	17	26		82	186	206	290	251	
% Case to answer	70	65	68	29	63	60	63	52	69	53	55	61	75	57	38	54	49	51	51	60	45	65			62	57	58	56		
No case to answer	Not referred (Reg representations)	9	8	10	24	11	9	12	26	10	21	20	16	15	8	18	10	17	26	20	14	18	12			78	115	176	158	
	Not referred (Rep representations)	0	0	1	2	1	1	0	0	0	2	1	0	1	0	2	5	2	2	1	0	0	0			8	13	8	13	
	Not referred (No representations)	0	1	1	0	1	1	2	1	0	2	2	3	0	1	0	2	1	2	1	1	1	1			21	21	14	10	
	Total cases not referred	9	9	12	26	13	11	14	27	10	25	23	19	16	9	20	17	20	30	22	15	19	13			107	149	198	181	
Further Information	0	1	0	1	1	1	0	2	1	2	1	0	1	1	4	2	6	1	0	2	2	1		14	6	8	10	20		

By profession

	No Case to Answer	Case to answer				Total YTD
		FI	CCC	HC	IC	
Arts therapists	0	0	1	1	0	2
Biomedical scientists	8	1	22	1	0	32
Chiropodists & podiatrists	19	7	19	1	0	46
Clinical scientists	1	0	2	0	0	3
Dietitians	3	2	7	0	0	12
Hearing aid dispensers	6	1	3	0	0	10
Occupational therapists	16	2	21	3	0	42
ODPs	7	0	21	0	0	28
Orthoptists	1	0	0	0	0	1
Paramedics	30	2	64	1	0	97
Physiotherapists	34	1	35	1	0	71
Practitioner psychologists	38	2	19	0	0	59
Prosthetists & orthotists	2	0	2	0	0	4
Radiographers	11	2	13	1	0	27
SLTs	5	0	12	1	0	18
Total YTD	181	20	241	10	0	452

2007/2008 FYE	2008/2009 FYE	2009/10 FYE	2010/11 YTD
11	6	4	2
14	42	26	32
31	31	53	46
6	7	3	3
9	5	7	12
			10
29	40	60	42
24	30	49	28
2	1	0	1
62	72	115	97
56	75	93	71
0	0	38	59
4	2	4	4
41	32	34	27
10	20	13	18
299	363	499	452

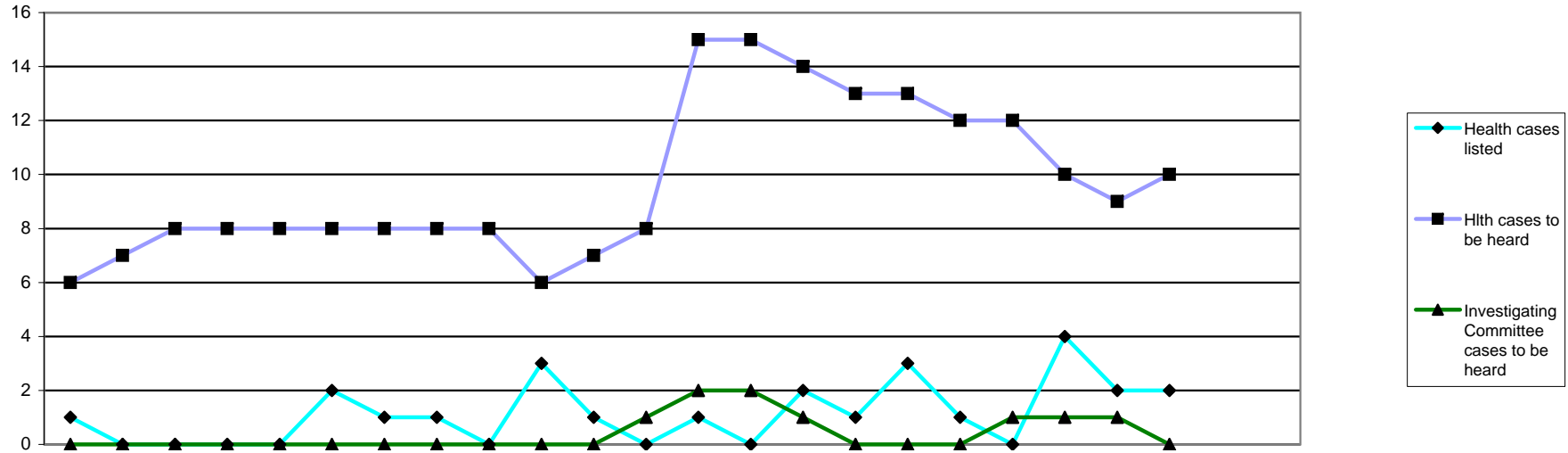
By source of allegation

	No Case to Answer	Case to answer				Total YTD
		FI	CCC	HC	IC	
Employer	31	9	130	7	0	177
Public	96	6	28	0	0	130
Police	11	0	15	0	0	26
Professional body	0	0	1	0	0	1
Registrant	15	3	9	0	0	27
Other	6	0	4	0	0	10
Article 22(6)/Anon	22	2	54	3	0	81
Total YTD	181	20	241	10	0	452

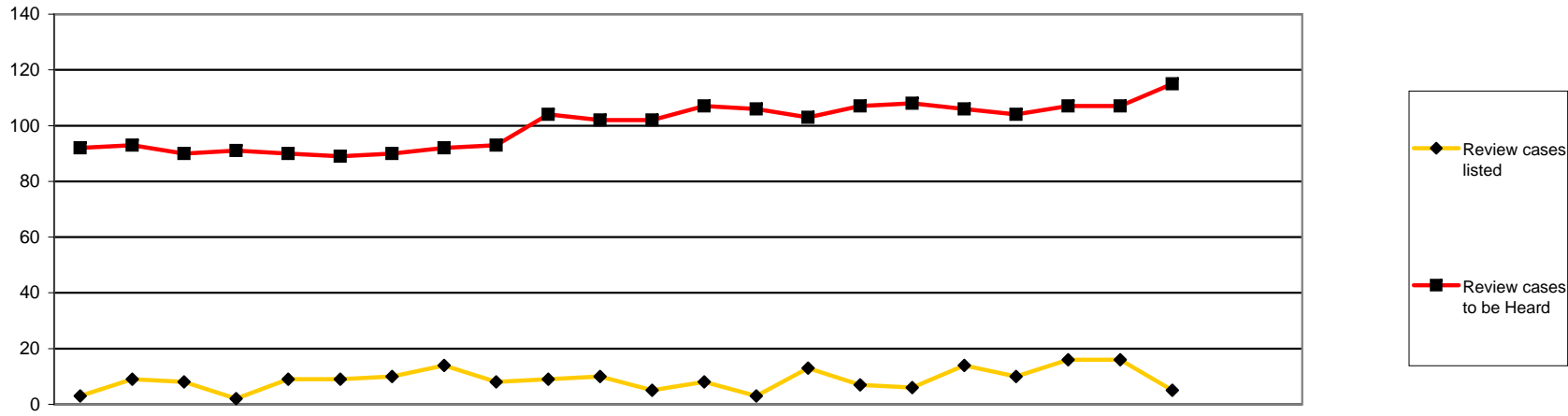
2008/2009 FYE	2009/10 FYE	2010/11 YTD
176	211	177
78	140	130
30	29	26
2	2	1
12	32	27
19	15	10
46	70	81
363	499	452

	Applications Considered	Applications Granted	Applications Not Granted	Reviewed	Revoked
Arts therapists	0	0	0	1	0
Biomedical scientists	5	5	0	1	0
Chiropodists & podiatrists	2	2	0	5	0
Clinical scientists	3	3	0	0	0
Dietitians	0	0	0	0	0
Hearing aid dispensers	1	1	0	1	1
Occupational therapists	4	2	2	6	0
ODPs	4	4	0	19	2
Orthoptists	0	0	0	0	0
Paramedics	11	11	0	28	1
Physiotherapists	5	5	0	16	0
Practitioner psychologists	0	0	0	8	1
Prosthetists & orthotists	0	0	0	0	0
Radiographers	5	4	1	11	3
SLTs	0	0	0	4	0
Total	40	37	3	100	8

Hearings held 2007/8 FYE	Hearings held 2008/9 FYE	Hearings held 2009/10 FYE	Hearings held 2010/11 YTD
4	4	2	1
8	16	8	6
6	5	13	7
4	0	0	3
0	0	0	0
			2
3	6	9	10
18	18	20	23
0	0	0	0
16	14	46	39
8	13	20	21
			8
0	0	0	0
7	6	12	16
0	3	8	4
74	85	141	140



		2009			2010									2011						2005/6	2006/7	2007/8	2008/9	09/10	10/11							
		Apr	May	Jun	Jul	Aug	Sep	Oct	Nov	Dec	Jan	Feb	Mar	Apr	May	Jun	Jul	Aug	Sep	Oct	Nov	Dec	Jan	Feb	Mar	FYE	FYE	FYE	FYE	FYE	YTD	
Health Committee	Health cases listed	1	0	0	0	0	2	1	1	0	3	1	0	1	0	2	1	3	1	0	4	2	2	8	7	9	3	9	16			
	Suspended	1	0	0	0	0	1	0	1	0	1	0	0	0	0	0	0	1	1	0	1	0	1	2	2	5	1	4	4			
	Conditions of practice	0	0	0	0	0	0	0	0	0	1	0	0	0	0	2	0	0	0	0	1	1	0	3	1	0	1	1	4			
	Caution	0	0	0	0	0	0	0	0	0	0	0	0	0	0	0	0	0	0	0	0	0	0	0	0	0	0	0	0			
	No further action	0	0	0	0	0	0	0	0	0	0	0	0	0	0	0	0	0	0	0	0	0	0	0	1	0	0	0	0			
	Not well founded	0	0	0	0	0	0	0	1	0	0	1	1	0	0	0	0	0	1	0	0	0	0	0	Not recorded			1	1	3	1	
	Adjourned/part heard	0	0	0	0	0	1	0	0	0	0	0	0	1	0	0	0	0	0	0	2	0	0						1	0	1	3
	Cancelled	0	0	0	0	0	0	0	0	0	0	0	0	0	0	0	0	0	0	0	0	0	1						2	0	0	1
	Referred to C&C	0	0	0	0	0	0	0	0	0	0	0	0	0	0	0	0	1	0	0	0	0	0						0	0	0	1
	Removed - consent	0	0	0	0	0	0	0	0	0	0	0	0	0	0	0	1	0	0	0	0	0	1	0								2
	Hlth cases to be heard	6	7	8	8	8	8	8	8	8	6	7	8	15	15	14	13	13	12	12	10	9	10	7	7	4	5	8	12			
Investigating	Removed	1	1	0	0	0	0	0	0	0	0	1	0	0	0	1	0	0	0	0	0	0							3	1		
	Amended	0	0	0	0	0	0	0	0	0	0	1	0	0	0	0	0	0	0	0	0	0	0							1	0	
	Not well found	0	0	0	0	0	0	0	0	0	0	0	0	0	0	1	0	0	0	0	0	0	0							0	1	
	No further action	1	0	0	0	0	0	0	0	0	0	0	0	0	0	0	0	0	0	0	0	0	1							1	1	
	Adjourned/part heard	0	0	0	0	0	0	0	0	0	0	0	0	0	0	0	0	0	0	0	0	0	0							0	0	
Investigating Committee cases to be heard	0	0	0	0	0	0	0	0	0	0	0	1	2	2	1	0	0	0	1	1	1	0							1	1		



	2009			2010									2011									2005/6	2006/7	2007/8	2008/9	09/10	10/11					
	Apr	May	Jun	Jul	Aug	Sep	Oct	Nov	Dec	Jan	Feb	Mar	Apr	May	Jun	Jul	Aug	Sep	Oct	Nov	Dec	Jan	Feb	Mar	FYE	FYE	FYE	FYE	FYE	YTD		
Review cases listed	3	9	8	2	9	9	10	14	8	9	10	5	8	3	13	7	6	14	10	16	16	5				41	67	67	96	98		
Struck off	2	5	3	1	1	1	2	7	3	3	3		1	0	3	3	1	3	0	4	3	1				10	31	31	19			
Suspension continued	1	3	4	0	4	3	4	4	2	3	3	4	2	0	4	1	0	4	8	6	3	2				37	31	35	30			
Conditions continued	0	0	1	0	0	3	0	0	2	0	1	0	0	1	0	1	1	1	0	0	2	0				2	7	7	6			
Suspension revoked	0	0	0	0	3	0	2	1	0	1	1	0	0	1	0	1	0	1	0	1	0	0				2	8	8	4			
Suspension revoked conditions imposed	0	0	0	0	0	1	1	0	1	1	0	0	1	0	1	0	0	1	1	0	0	0				1	4	4	4			
Suspension revoked caution imposed	0	0	0	0	0	0	0	0	0	0	0	1	1	0	1	0	0	1	0	0	0	0				0	0	1	3			
Conditions revoked	0	1	0	0	1	1	0	1	0	0	1	0	2	0	3	1	2	0	0	2	2	1				5	5	5	13			
Conditions revoked suspension imposed	0	0	0	0	0	0	0	1	0	0	0	0	0	0	0	0	0	0	0	0	0	0				5	1	1	0			
Conditions revoked caution imposed	0	0	0	1	0	0	0	0	0	0	0	0	0	0	0	0	0	0	0	0	0	0				1	1	1	0			
Vol Removal (Consent)	0	0	0	0	0	0	1	0	0	0	1	0	0	0	0	0	1	1	1	1	1	0						5	5			
Adjourned/part heard	0	0	0	0	0	0	0	0	0	0	0	0	1	0	0	0	1	0	0	2	3	0				3	0	0	7			
Cancelled	0	0	0	0	0	0	0	0	0	1	0	0	0	1	0	0	0	1	0	0	1	1						1	4			
Article 30(7)															1	0	0	0	0	0	0	0							1			
Restored review cases to be Heard																						1	0									
	92	93	90	91	90	89	90	92	93	104	102	102	107	106	103	107	108	106	104	107	107	115				69	90	90	102	107		

Representation

	Final Hearings-CCC														2009/10 FYE	2010/11 YTD
	Struck off	Suspended	Conditions of Practice	Caution	No Further Action	Not Well Founded	NR	Referred to Health	Removed	Register entry amended	Restored	Not restored	Vol Removal (Consent)	Part Heard		
Represented self	3	3	0	13	1	12	0	0	0	0	0	0	0	14	44	46
Representative	9	17	15	37	1	51	0	2	0	0	0	0	1	23	115	156
None	38	22	3	9	1	6	0	0	1	0	0	0	13	2	98	95
Total	50	42	18	59	3	69	0	2	1	0	0	0	14	39	257	297

Profession	Represented self	Representative	None	% of representation
Arts therapists	0	0	0	0
Biomedical scientists	5	4	7	56
Chiropodists & podiatrists	0	14	9	61
Clinical scientists	2	0	1	67
Dietitians	0	2	1	67
Hearing aid dispensers	3	2	4	56
Occupational therapists	3	15	14	56
ODPs	5	8	12	52
Orthoptists	0	0	0	0
Paramedics	15	47	17	78
Physiotherapists	8	37	9	83
Practitioner psychologists	1	17	4	82
Prosthetists & orthotists	0	2	1	67
Radiographers	4	9	7	65
SLTs	0	4	4	50

The above tables do not include cases that were adjourned, postponed or cancelled

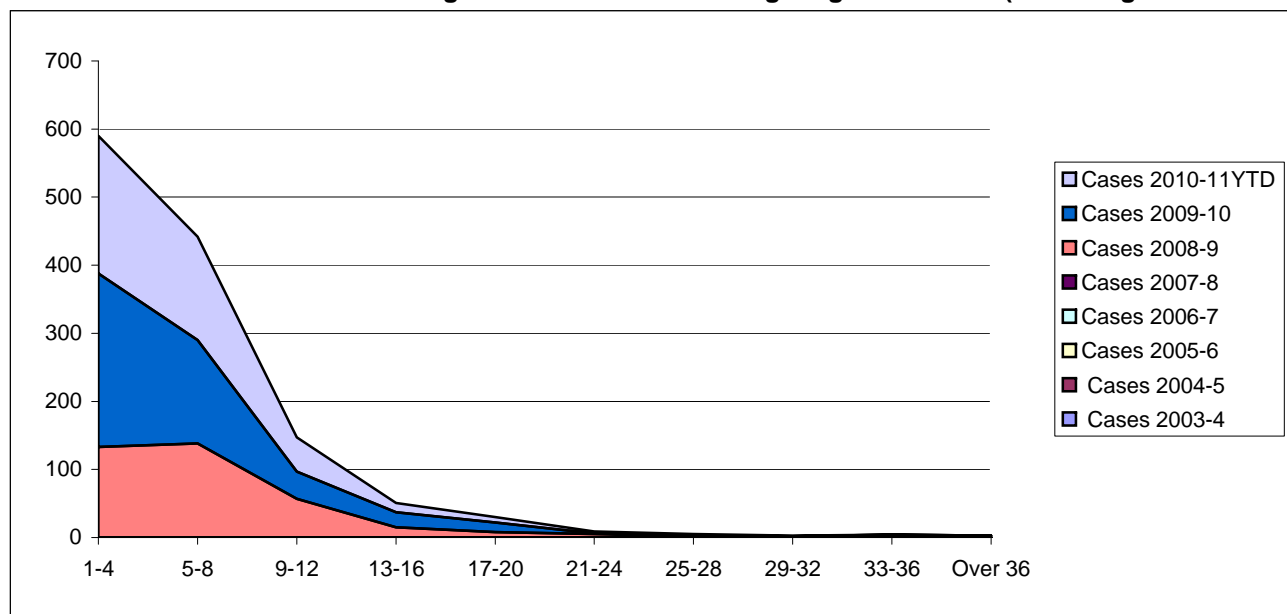
	Final Hearings												
	Struck off	Suspended	Conditions of Practice	Caution	No Further Action	Not Well Founded	NR	Referred to Health	Removed	Register entry amended	Part Heard	Vol Removal (Consent)	
Arts therapists	0	0	0	0	0	0	0	0	0	0	0	0	0
Biomedical scientists	3	2	0	4	0	3	0	0	1	0	3	0	
Chiropodists & podiatrists	6	2	2	6	0	5	0	0	0	0	1	1	
Clinical scientists	0	0	1	0	0	0	0	0	0	0	1	1	
Dietitians	0	2	0	1	0	0	0	0	0	0	0	1	
Hearing aid dispensers	2	2	0	0	0	4	0	0	0	0	1	0	
Occupational therapists	3	6	3	4	0	6	1	1	0	0	2	5	
ODPs	3	7	2	6	1	4	0	1	0	0	1	0	
Orthoptists	0	0	0	0	0	0	0	0	0	0	0	0	
Paramedics	12	4	1	26	1	24	0	0	0	0	9	2	
Physiotherapists	10	10	3	9	0	10	0	0	0	0	9	3	
Practitioner psychologists	1	2	2	0	0	8	0	0	0	0	4	0	
Prosthetists & orthotists	2	0	1	0	0	0	0	0	0	0	0	0	
Radiographers	6	4	2	2	1	4	0	0	0	0	4	1	
SLTs	2	1	1	1	0	1	0	0	0	0	3	0	
Total 2010/11 YTD	50	42	18	59	3	69	1	2	1	0	38	14	
Total 2009/10 FYE	64	40	15	46	3	76	0	2	3	1	7	8	
Total 2008/2009 FYE	67	25	12	24	4	39	0	0					
Total 2007/2008 FYE	37	35	5	30	23	24	0	0					
Total 2006/2007 FYE	24	19	5	25	6	15	1	2					
Total 2005/2006 FYE	9	20	6	9	3	1	6	3					

	Review Hearings												
	Struck off	Suspension continued	Suspension revoked	Suspension revoked caution imposed	Suspension revoked conditions imposed	Conditions continued	Conditions revoked	Conditions revoked caution imposed	Conditions revoked suspension imposed	Adjourned/Part Heard	Vol Removal (Consent)	Article 30(7)	Restored
Arts therapists	0	0	0	0	0	0	0	0	0	0	0	0	0
Biomedical scientists	1	4	0	1	0	1	1	1	0	0	1	0	0
Chiropodists & podiatrists	0	0	0	0	0	0	2	0	0	0	0	0	0
Clinical scientists	1	0	0	0	0	0	0	0	0	0	0	0	0
Dietitians	1	0	0	0	0	0	0	0	0	0	0	0	0
Hearing aid dispensers	0	0	1	0	0	0	0	0	0	0	0	0	0
Occupational therapists	3	4	1	0	1	0	1	0	0	0	4	1	0
ODPs	0	2	1	0	0	1	0	0	0	0	0	0	0
Orthoptists	0	1	0	0	0	0	0	0	0	0	0	0	0
Paramedics	2	2	0	2	1	0	2	0	0	0	0	0	1
Physiotherapists	3	4	0	0	1	3	3	0	0	0	0	0	0
Practitioner psychologists	0	0	0	0	0	1	0	0	0	0	0	0	0
Prosthetists & orthotists	1	0	0	0	0	0	0	0	0	0	0	0	0
Radiographers	3	3	0	0	0	0	1	0	0	0	0	0	0
SLTs	0	3	0	0	0	0	1	0	0	1	0	0	0
Total 2010/11 YTD	15	23	3	3	3	6	11	1	0	1	5	1	1
Total 2009/10 YTD	15	23	3	3	3	6	11	1	0	1	5	1	1
Total 2008/2009YTD	16	51	8	2	3	3	1	0	0	3	0	0	0
Total 2007/2008 FYE	8	25	2	0	0	3	0	0	0	4	0	0	0
Total 2006/2007 FYE													
Total 2005/2006 FYE													

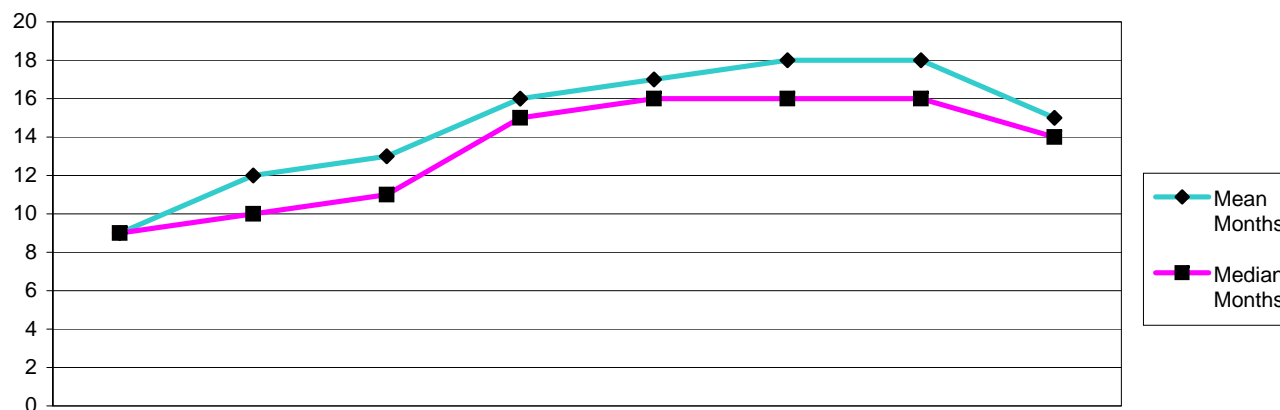
Not available
Not available

		Month of Panel																																			
		2009												2010												2011											
Months		Apr	May	Jun	Jul	Aug	Sep	Oct	Nov	Dec	Jan	Feb	Mar	Apr	May	Jun	Jul	Aug	Sep	Oct	Nov	Dec	Jan	Feb	Mar	Apr	May	Jun	Jul	Aug	Sep	Oct	Nov	Dec	Jan	Feb	Mar
Cases awaiting ICP	0-4	122	139	137	171	193	197	209	191	191	175	200	204	175	182	177	189	195	167	186	201	179	184	175	182	177	189	195	167	186	201	179	184				
	5-8	50	42	42	43	37	41	47	57	69	67	61	63	62	61	55	65	59	62	58	52	68	56	62	61	55	65	59	62	58	52	68	56				
	9-12	14	16	17	23	21	18	16	15	12	20	19	25	27	27	33	31	28	24	23	22	21	27	27	27	33	31	28	24	23	22	21	27				
	13-16	10	7	9	8	7	9	9	12	13	9	10	5	6	13	12	14	16	14	14	13	13	11	6	13	12	14	16	14	14	13	13	11				
	17-20	2	3	1	2	3	4	3	3	3	5	5	5	5	4	4	2	3	5	3	7	8	10	5	4	4	2	3	5	3	7	8	10				
	21-24	1	1	0	0	0	0	0	0	1	1	1	1	1	3	3	5	2	2	2	2	1	2	1	3	3	5	2	2	2	2	1	2				
	25-28	2	1	1	0	0	0	0	0	0	0	0	0	1	1	1	1	1	1	1	0	1	2	1	1	1	1	1	1	1	0	1	2				
	29-32	1	1	1	2	1	1	1	1	0	0	0	0	0	0	0	0	1	1	0	0	0	0	0	0	0	0	1	1	0	0	0	0				
	over 33	2	1	1	0	1	1	1	1	1	1	0	0	0	0	0	0	0	0	0	0	0	0	0	0	0	0	0	0	0	0	0	0				
Cases awaiting final hearing (from ICP)	1-4	80	85	95	91	99	91	97	104	111	118	132	121	152	151	134	119	104	100	110	116	109	152	151	134	119	104	100	110	116	109						
	5-8	54	53	61	47	44	49	54	68	62	71	67	71	78	73	81	77	89	110	91	83	83	78	73	81	77	89	110	91	83	83						
	9-12	18	22	25	29	41	26	34	21	19	20	18	32	33	33	35	33	41	29	29	33	38	33	33	35	33	41	29	29	33	38						
	13-16	21	21	17	14	8	12	12	16	22	12	14	10	7	7	7	11	6	8	16	15	16	7	7	7	11	6	8	16	15	16						
	17-20	14	17	12	10	5	6	8	6	3	2	3	2	7	7	9	5	4	3	2	3	3	7	7	9	5	4	3	2	3	3						
	21-24	0	0	4	5	9	9	7	6	3	4	4	5	2	1	1	2	5	4	6	3	1	2	1	1	2	5	4	6	3	1						
	25-28	2	0	1	1	1	1	2	2	3	2	1	0	1	1	1	1	1	0	0	2	2	1	1	1	1	1	0	0	2	2						
	29-32	0	1	1	1	1	0	0	0	0	0	0	1	1	0	0	0	0	1	1	1	1	1	0	0	0	0	1	1	1	1						
	over 33	0	0	0	0	0	1	0	0	0	0	0	0	0	0	0	0	0	0	0	0	0	0	0	0	0	0	0	0	0	0						

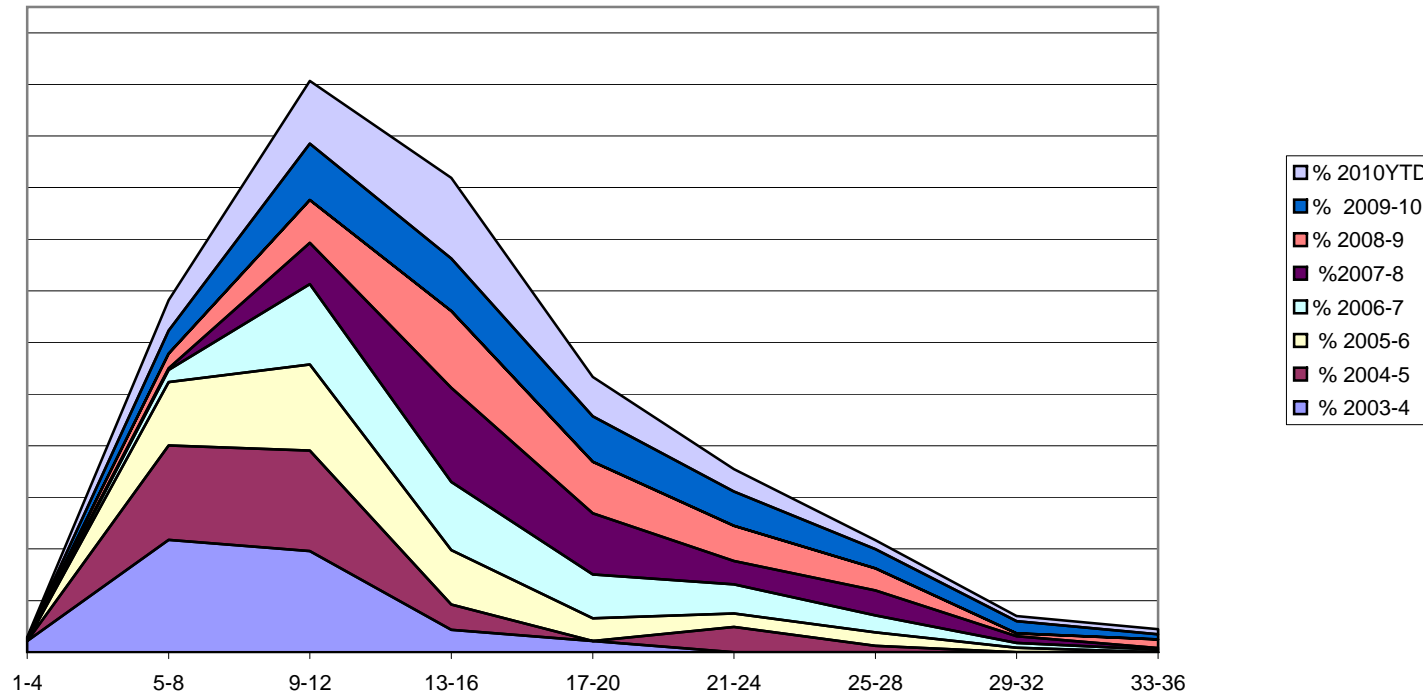
Health Professions Council Length of time: Cases Investigating Committee (excluding further information) 2003-4 to 2010-11 Fitness to Practise



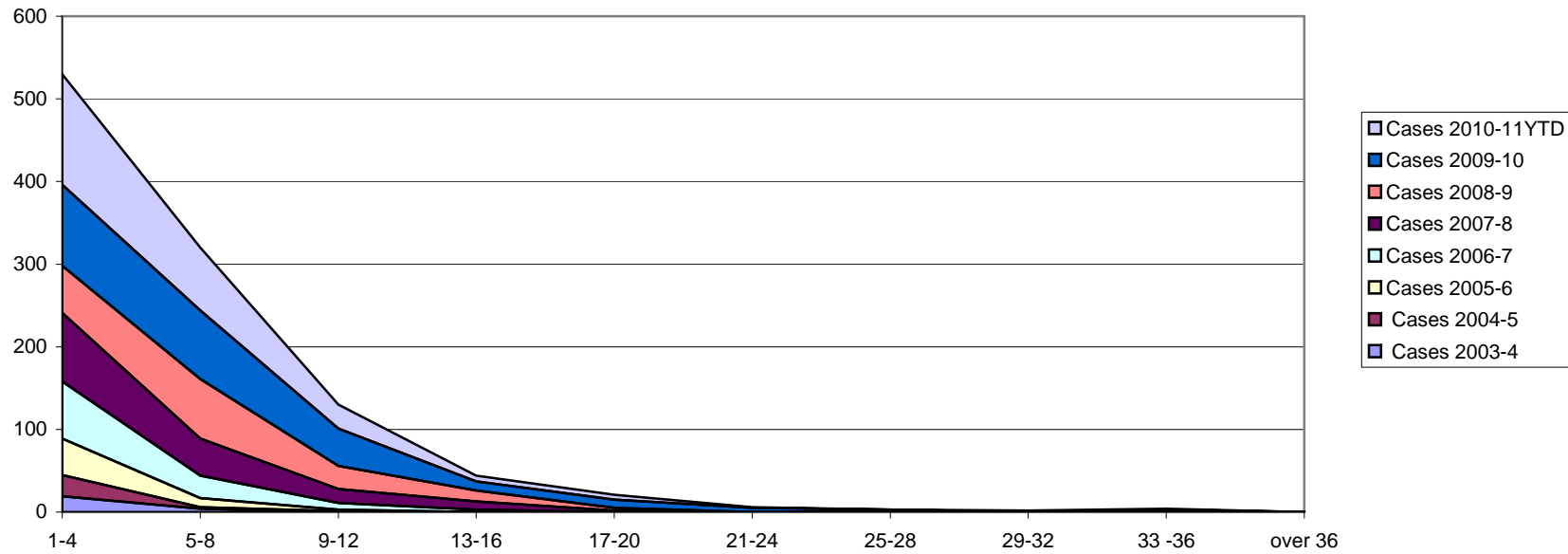
Number of Months	Cases 2003-4	Cases 2004-5	Cases 2005-6	Cases 2006-7	Cases 2007-8	Cases 2008-9	Cases 2009-10	Cases 2010-11YTD
1-4						133	255	202
5-8						138	152	152
9-12						57	40	50
13-16						15	22	14
17-20						8	14	8
21-24						5	1	3
25-28						2	1	2
29-32						1	1	1
33-36						3	1	0
Over 36			Not available			1	2	0
Mean Months						7	6	6
Median Months						5	4	5
Total Cases						363	489	432



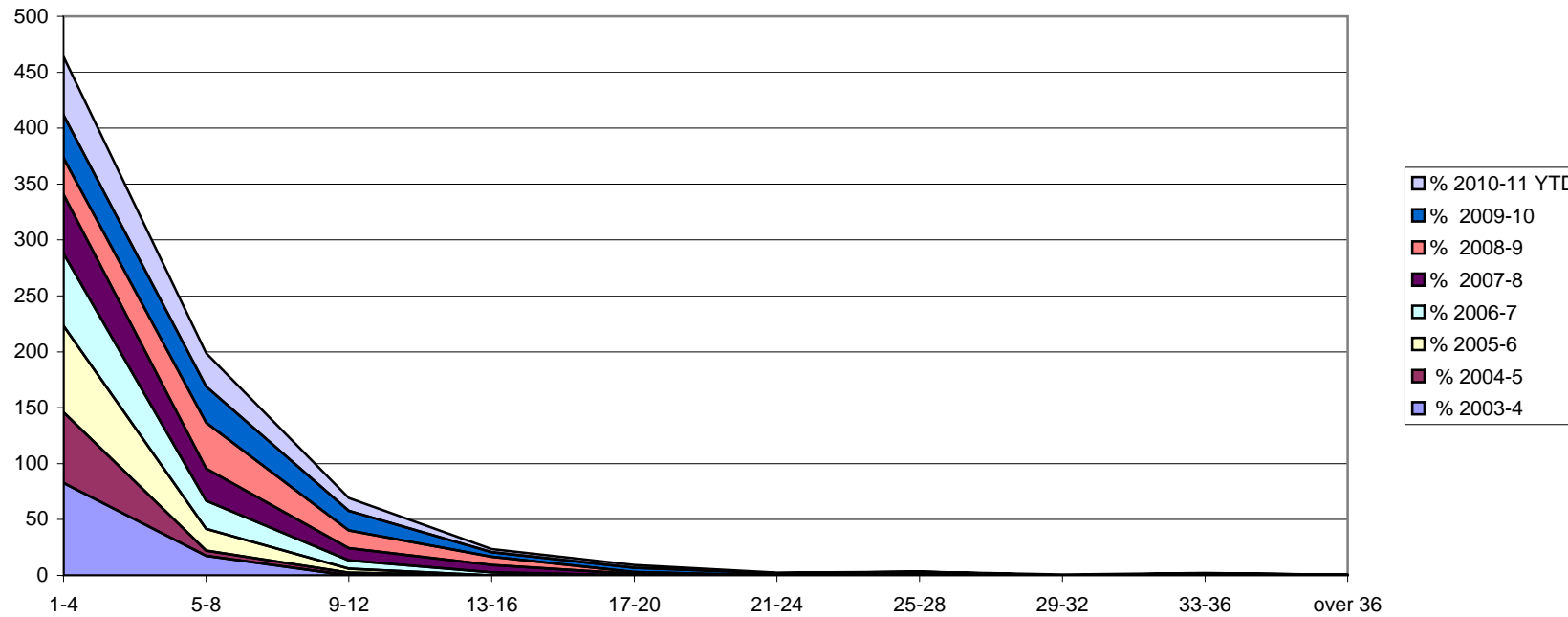
Number of Months	Cases 2003-4	Cases 2004-5	Cases 2005-6	Cases 2006-7	Cases 2007-8	Cases 2008-9	Cases 2009-10	Cases 2010-11YTD
1-4	1	0	0	0	1	0	1	1
5-8	10	15	14	5	1	10	23	30
9-12	9	16	19	33	25	29	56	62
13-16	2	4	12	28	57	52	52	80
17-20	1	0	5	18	37	35	45	39
21-24	0	4	3	12	14	24	34	22
25-28	0	1	3	7	15	15	19	9
29-32	0	0	1	2	4	2	12	5
33-36	0	0	0	1	1	6	5	5
Over 36	0	0	0	0	0	2	9	3
Mean Months	9	12	13	16	17	18	18	15
Median Months	9	10	11	15	16	16	16	14
Total Cases	23	41	57	106	156	175	256	256



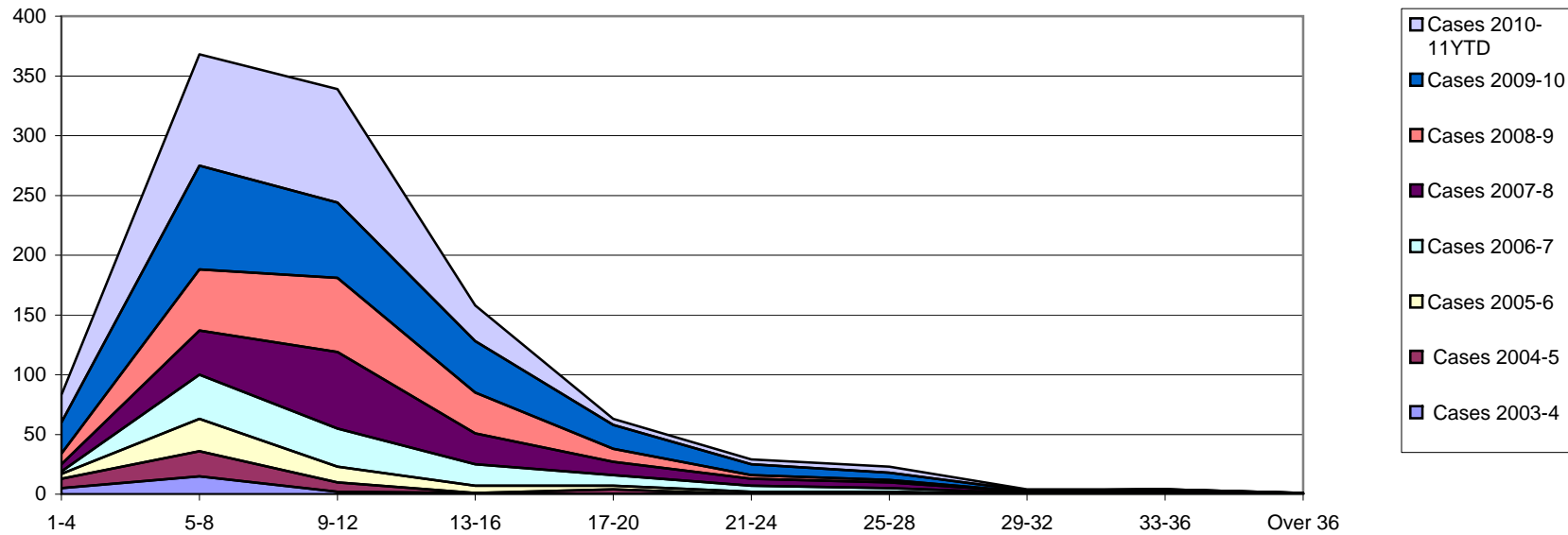
Number of Months	% 2003-4	% 2004-5	% 2005-6	% 2006-7	% 2007-8	% 2008-9	% 2009-10	% 2010YTD
1-4	4.3	0.0	0.0	0.0	0.6	0.0	0.4	0.4
5-8	43.5	36.6	24.6	4.7	0.6	5.7	9.0	11.7
9-12	39.1	39.0	33.3	31.1	16.0	16.6	21.9	24.2
13-16	8.7	9.8	21.1	26.4	36.5	29.7	20.3	31.3
17-20	4.3	0.0	8.8	17.0	23.7	20.0	17.6	15.2
21-24	0	9.8	5.3	11.3	9.0	13.7	13.3	8.6
25-28	0	2.4	5.3	6.6	9.6	8.6	7.4	3.5
29-32	0	0.0	1.8	1.9	2.6	1.1	4.7	2.0
33-36	0	0.0	0.0	0.9	0.6	3.4	2.0	2.0
Over 36	0	0.0	0.0	0.9	0.6	1.1	3.5	1.2



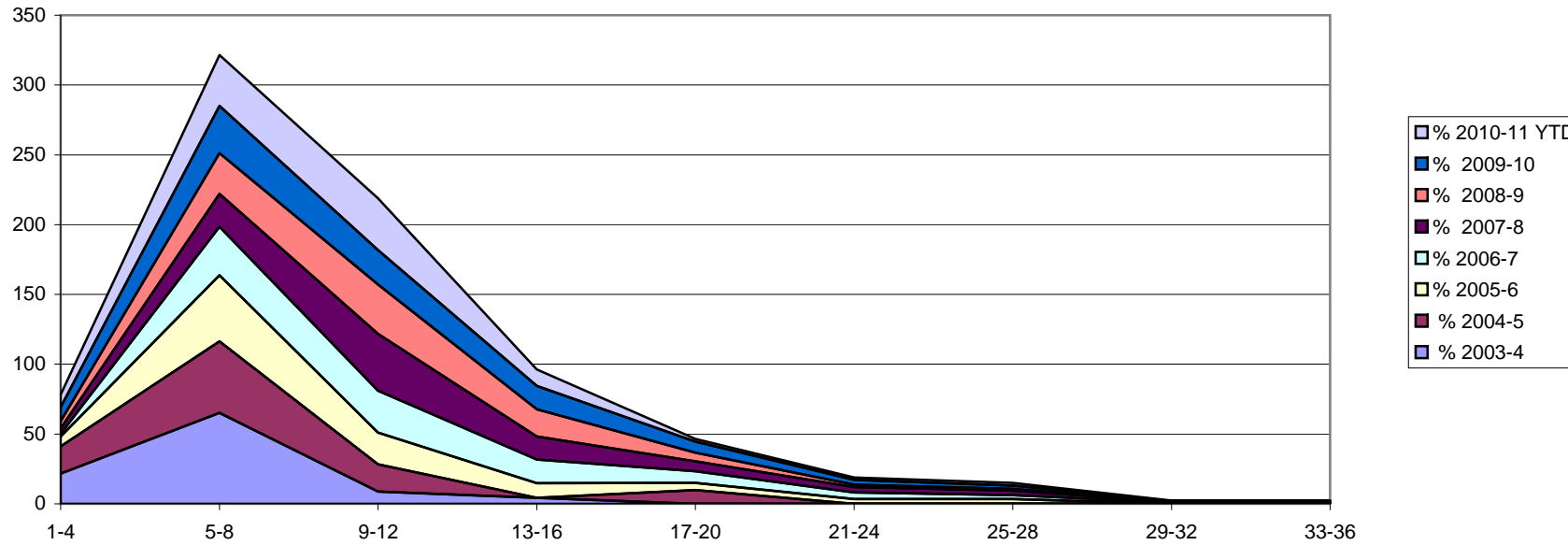
Number of Months	Cases 2003-4	Cases 2004-5	Cases 2005-6	Cases 2006-7	Cases 2007-8	Cases 2008-9	Cases 2009-10	Cases 2010-11YTD
1-4	19	26	44	69	83	57	98	134
5-8	4	2	11	27	45	72	83	76
9-12	0	1	2	8	17	28	45	29
13-16	0	0	0	3	10	13	11	7
17-20	0	0	0	0	2	3	10	6
21-24	0	0	0	0	0	0	5	1
25-28	0	1	0	0	0	0	2	0
29-32	0	0	0	0	0	0	0	2
33 -36	0	0	0	0	0	1	2	1
over 36	0	0	0	0	0	0	0	0
Mean Months	3	4	3	4.5	6	7	7	6
Meadian Months	3	3	3	3	4	6	5	4
Total Cases	23	41	57	107	157	175	256	256



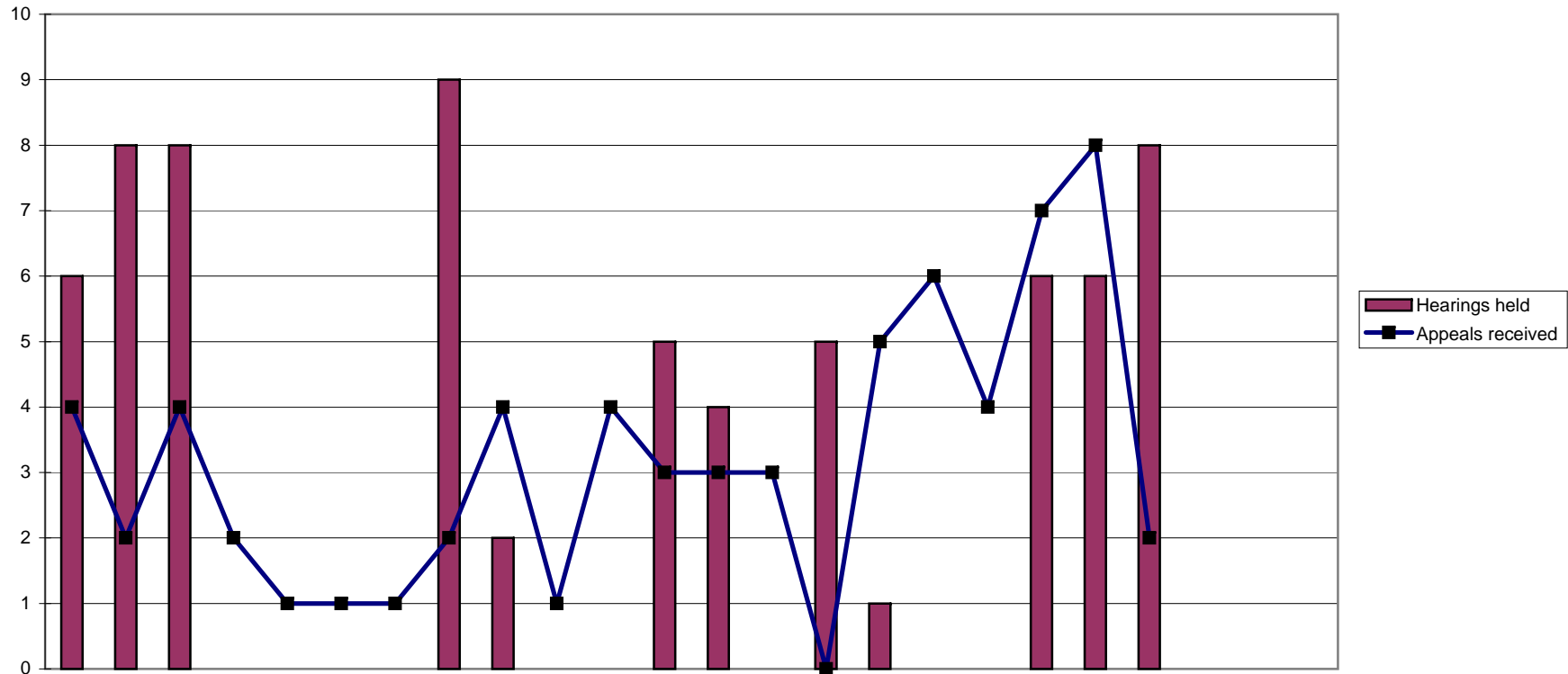
Number of Months	% 2003-4	% 2004-5	% 2005-6	% 2006-7	% 2007-8	% 2008-9	% 2009-10	% 2010-11 YTD
1-4	83	63	77	64	53	33	38	52
5-8	17	5	19	25	29	41	32	30
9-12	0	2	4	7	11	16	18	11
13-16	0	0	0	3	6	7	4	3
17-20	0	0	0	0	1	2	4	2
21-24	0	0	0	0	0	0	2	0
25-28	0	2	0	0	0	0	1	0
29-32	0	0	0	0	0	0	0	1
33-36	0	0	0	0	0	1	1	0
over 36	0	0	0	0	0	1	0	0



Number of Months	Cases 2003-4	Cases 2004-5	Cases 2005-6	Cases 2006-7	Cases 2007-8	Cases 2008-9	Cases 2009-10	Cases 2010-11YTD
1-4	5	8	4	2	6	9	26	23
5-8	15	21	27	37	37	51	87	93
9-12	2	8	13	32	64	62	63	95
13-16	1	0	6	18	26	34	43	30
17-20	0	4	3	9	11	11	20	5
21-24	0	0	2	5	6	3	9	4
25-28	0	0	2	3	5	2	6	5
29-32	0	0	0	1	1	0	1	1
33-36	0	0	0	0	1	2	1	0
Over 36	0	0	0	0	0	1	0	0
Mean Months	6	8	10	11.5	12	11	11	10
Median Months	5	7	8	10	11	10	9	9
Total Cases	23	41	57	107	157	175	256	256

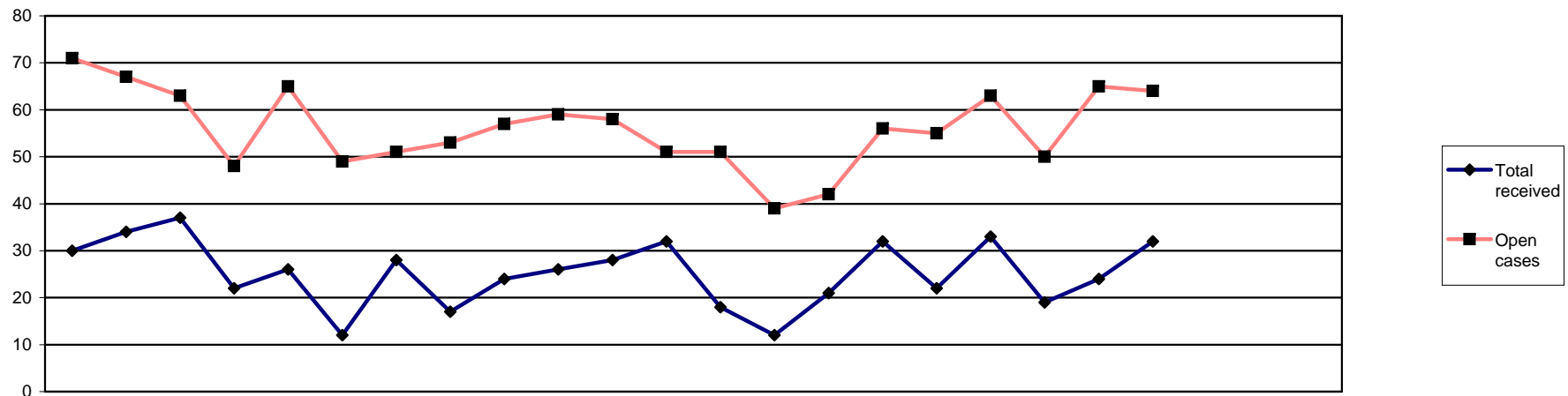


Number of Months	% 2003-4	% 2004-5	% 2005-6	% 2006-7	% 2007-8	% 2008-9	% 2009-10	% 2010-11 YTD
1-4	22	20	7	2	4	5	10	9
5-8	65	51	47	35	24	29	34	36
9-12	9	20	23	30	41	35	25	37
13-16	4	0	11	17	17	19	17	12
17-20	0	10	5	8	7	6	8	2
21-24	0	0	4	5	4	2	4	2
25-28	0	0	4	3	3	1	2	2
29-32	0	0	0	1	1	0	0	0
33-36	0	0	0	0	1	1	0	0
Over 36	0	0	0	0	1	1	0	0



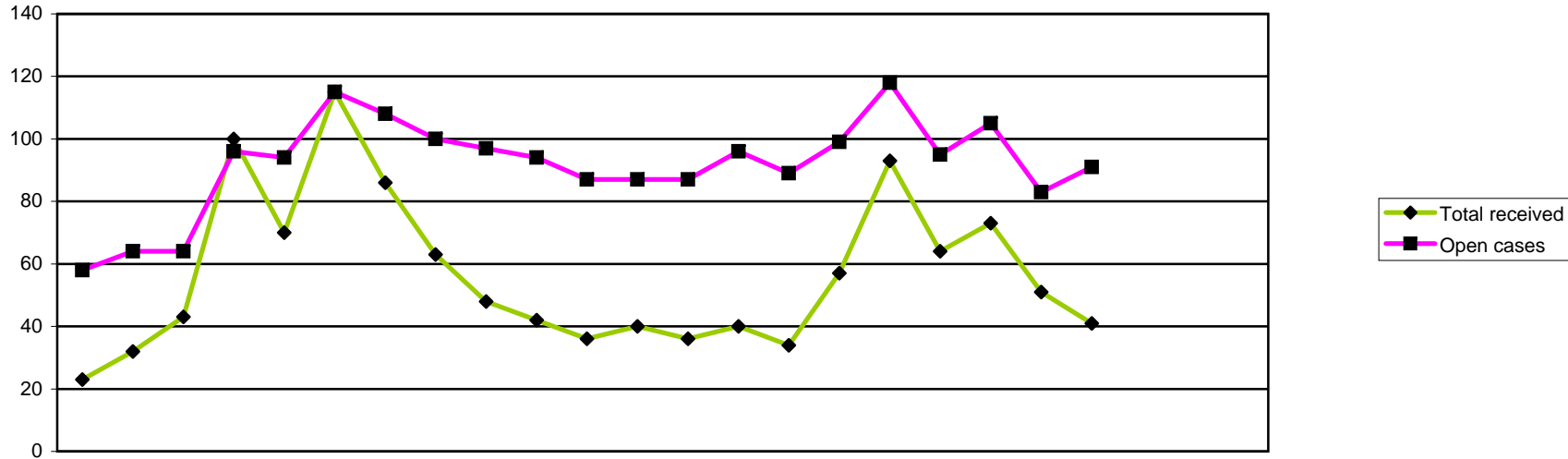
	2009			2010									2011											
	Apr	May	Jun	Jul	Aug	Sep	Oct	Nov	Dec	Jan	Feb	Mar	Apr	May	Jun	Jul	Aug	Sep	Oct	Nov	Dec	Jan	Feb	Mar
Appeals received	4	2	4	2	1	1	1	2	4	1	4	3	3	3	0	5	6	4	7	8	2			
Reviewed	8	9	8	0	0	0	0	9	2	0	0	5	4	0	5	0	0	0	6	6	8			
Hearings held	6	8	8	0	0	0	0	9	2	0	0	5	4	0	5	1	0	0	6	6	8			
Adjourned/postponed	2	1	0	0	0	0	0	0	0	0	0	1	1	0	1	0	0	0	0	1	1			
Withdrawn	0	0	0	0	0	0	0	0	0	0	1	0	1	0	0	0	0	1	0	0	0			
Allowed	1	5	1	0	0	0	0	4	1	0	0	2	2	0	4	0	0	0	3	4	2			
Dismissed	0	1	3	0	0	0	0	1	1	0	0	1	0	0	0	0	0	0	3	1	3			
Substitute decision	0	0	1	0	0	0	0	2	0	0	0	0	0	0	0	0	0	0	0	1	0			
Remit to ETC	5	2	3	0	0	0	0	2	0	0	0	1	0	0	0	0	0	0	0	0	2			
Current active cases	22	16	7	9	11	12	13	6	8	9	12	11	10	13	9	13	18	21	22	24	19			

2005/6	2006/7	2007/8	2008/9	09/10	10/11
FYE	FYE	FYE	FYE	FYE	YTD
91	104	41	55	29	38
266	90	65	55	41	29
266	90	65	55	38	30
19	20	10	9	4	4
13	16	15	2	1	2
128	33	29	23	14	15
88	29	31	17	7	7
0	0	0	0	0	1
31	6	4	7	13	2



	2009			2010									2011											
	Apr	May	Jun	Jul	Aug	Sep	Oct	Nov	Dec	Jan	Feb	Mar	Apr	May	Jun	Jul	Aug	Sep	Oct	Nov	Dec	Jan	Feb	Mar
Public	0	1	13	3	2	2	4	1	1	2	1	2	1	0	3	3	2	1	4	1	1	Jan	Feb	Mar
Police	3	2	4	3	4	3	1	5	6	3	1	3	0	0	1	0	2	0	0	0	1			
HPC	0	0	0	0	0	0	0	0	0	0	1	1	0	0	0	4	0	0	2	0	0			
Anonymous	2	2	4	1	4	2	4	1	0	7	2	2	0	3	1	2	7	4	0	1	2			
Professional	25	29	16	15	16	5	19	10	17	14	23	24	17	9	16	23	11	28	13	21	28			
Total received	30	34	37	22	26	12	28	17	24	26	28	32	18	12	21	32	22	33	19	24	32			
Visits	0	1	1	0	1	0	0	0	0	0	0	0	0	0	0	0	0	0	0	0	0			
Open cases	71	67	63	48	65	49	51	53	57	59	58	51	51	39	42	56	55	63	50	65	64			

2005/6	2006/7	2007/8	2008/9	09/10	10/11
FYE	FYE	FYE	FYE	FYE	YTD
53	21	42	56	32	16
31	38	27	44	38	4
10	10	6	3	2	6
50	78	38	47	31	20
225	137	103	233	213	166
369	284	216	383	316	212
			3	3	0



		2009			2010								2011						2005/6	2006/7	2007/8	2008/9	09/10	10/11							
		Apr	May	Jun	Jul	Aug	Sep	Oct	Nov	Dec	Jan	Feb	Mar	Apr	May	Jun	Jul	Aug	Sep	Oct	Nov	Dec	Jan	Feb	Mar	FYE	FYE	FYE	FYE	FYE	YTD
Received	Renewal	0	1	11	9	14	54	30	21	11	2	1	0	1	1	1	0	1	0	0	0	0				36	27	81	43	154	4
	Readmission	2	5	3	6	5	5	5	7	5	3	2	5	3	7	9	5	14	5	3	7	5				33	40	34	94	53	58
	Admission	10	10	15	60	37	36	33	20	21	19	8	13	22	12	9	31	59	38	52	30	25				165	150	158	248	282	278
	Self referral	11	16	14	25	14	20	18	15	11	18	25	22	10	20	15	21	19	21	18	14	11				54	86	158	192	209	149
	Total received	23	32	43	100	70	115	86	63	48	42	36	40	36	40	34	57	93	64	73	51	41				288	303	431	577	698	489
Considered	Considered by panel	16	21	23	37	52	30	43	48	32	30	32	23	32	28	33	38	49	61	46	52	25				n/a	n/a	256	399	387	364
	Referred to FTP	2	2	5	6	6	1	8	10	4	4	7	6	4	4	9	8	5	6	10	1	4				n/a	n/a	37	41	61	51
	Admission rejected	0	1	0	0	0	0	0	1	0	0	0	0	1	0	1	0	1	0	1	0	0				n/a	n/a	2	6	2	4
	Readmission rejected	0	3	0	0	0	0	0	1	0	2	1	0	1	0	3	2	1	2	1	1	1				n/a	n/a	3	8	7	12
	Renewal rejected	0	0	0	0	0	0	0	1	0	0	0	0	0	0	0	0	0	0	0	0	0				n/a	n/a	0	2	1	0
	Not referred to FTP	2	6	4	5	3	4	7	6	2	8	12	7	9	7	8	8	9	11	3	8	10				n/a	n/a	34	82	66	73
	Admission accepted	10	7	11	24	37	22	24	18	21	11	12	7	13	14	8	15	27	36	30	41	9				n/a	n/a	150	204	204	193
	Readmission accepted	2	2	2	2	6	2	1	7	3	3	0	2	4	3	3	5	6	6	1	1	1				n/a	n/a	19	51	32	30
	Renewal accepted	0	0	1	0	0	1	3	4	0	2	0	1	0	0	1	0	0	0	0	0	0				n/a	n/a	1	5	12	1
	Closed before panel	6	6	16	28	10	15	11	4	5	14	11	17	3	3	8	7	21	28	16	22	25								143	133
	Open cases	58	64	64	96	94	115	108	100	97	94	87	87	87	96	89	99	118	95	105	83	91				n/a	n/a	75	75	87	91