

INTRODUCTION

The HCPC has assessed the length of time that UK route registrants remained registered for following their first registration. Registrants who came through the UK route must have completed an approved training course in a UK institution. This analysis is hoped to contribute to wider workforce planning efforts.

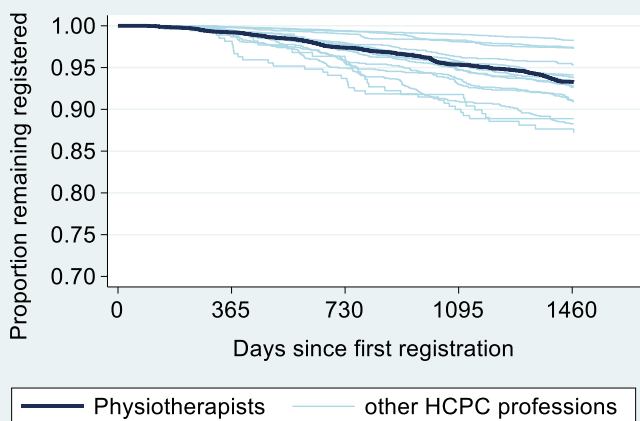
METHODS

All new UK route Physiotherapists who made their first registration between 01 Feb 2014 and 31 Jan 2018 were included in the analysis and their registration status at least four years later determined (n=7,134). The Kaplan-Meier method was used to estimate the percent remaining registered and the corresponding 95% confidence intervals for those estimates.

RESULTS

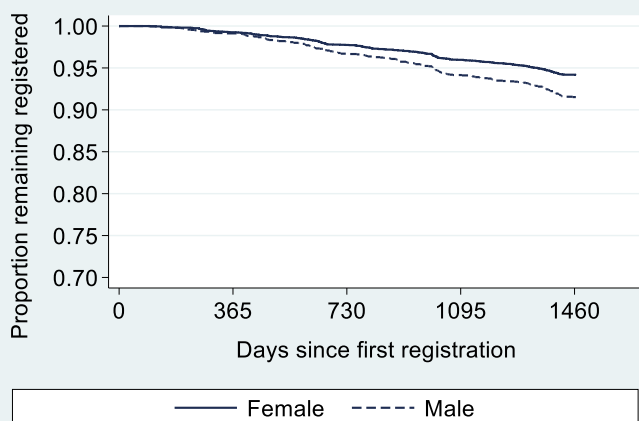
Overall retention

After two years 97.4% (95% CI: 97.0 to 97.7) of new Physiotherapists remained on the HCPC register and after four years 93.3% (95% CI: 92.7 to 93.9) remained registered.



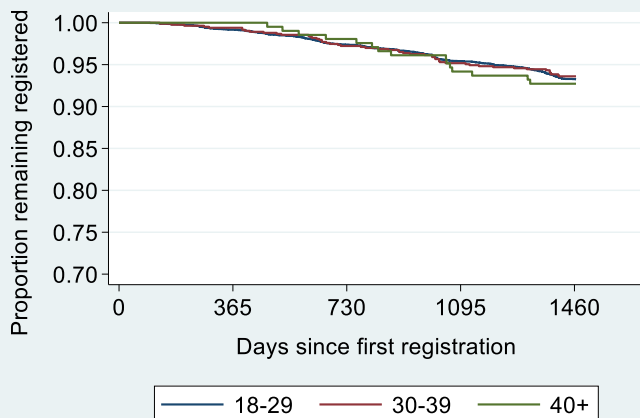
Gender / Sex

There was a small but statistically significant difference between the proportions of females (94.2%) and of males (91.5%) remaining registered after four years. The majority of new Physiotherapist registrants were female (66%).



Age

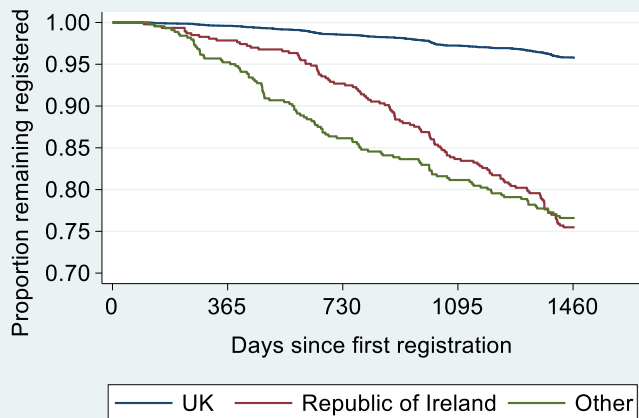
There was little difference in retention rates between the age groups at first registration. The majority (85%) of new Physiotherapist registrants were aged 18-29, 12% were aged 30-39 and 3% were aged 40+.



Nationality

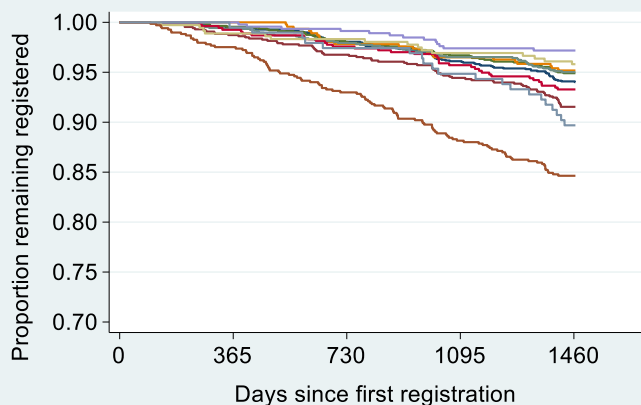
Retention varied considerably by nationality:

- UK = 95.8% retention (87% of registrants)
- Republic of Ireland = 75.5% (7% of registrants)
- Other = 76.6% (6% of registrants)

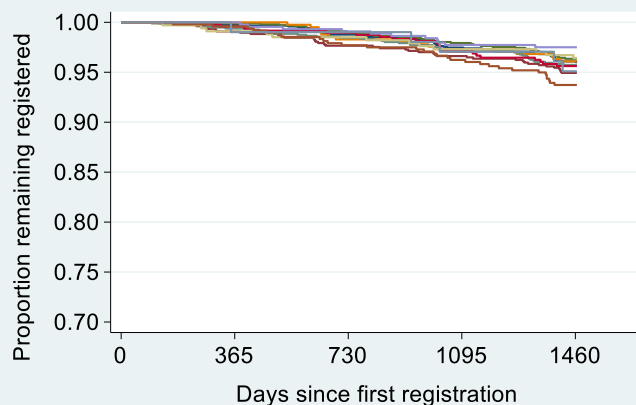


Location of training course provider

Retention rates varied considerably between locations of training course providers with a 12.6% gap between the location with the highest rate (South West, 97.2%) and the location with the lowest rate (Scotland, 84.6%).



Restricting the analysis of training provider location to new UK route registrants of UK nationality narrowed the gap to 3.8% between the location with the highest rate (South West, 97.5%) and the location with the lowest rate (Scotland, 93.7%).



Location of institution providing qualification used for registration	n	% total	% UK nationality	Retention: all nationalities		Retention: UK nationality only	
				%	95% CI	%	95% CI
North East & Yorkshire	1,387	19.5	88.5	94.1	92.7 to 95.2	96.1	94.8 to 97.0
North West	863	12.1	89.2	91.5	89.5 to 93.2	94.9	93.1 to 96.3
Midlands	1,122	15.7	90.4	94.9	93.5 to 96.1	96.4	95.0 to 97.3
East of England	457	6.4	89.7	95.2	92.8 to 96.8	96.1	93.7 to 97.6
London	1,064	14.9	90.4	95.0	93.5 to 96.2	95.7	94.3 to 96.8
South East	536	7.5	89.6	93.3	90.8 to 95.1	95.6	93.4 to 97.1
South West	461	6.5	95.7	97.2	95.2 to 98.4	97.5	95.5 to 98.6
Wales	358	5.0	93.6	95.8	93.2 to 97.5	96.4	93.8 to 98.0
Scotland	685	9.6	70.1	84.6	81.7 to 87.1	93.7	91.2 to 95.6
Northern Ireland	194	2.7	52.6	89.7	84.5 to 93.2	95.1	88.6 to 97.9

CONCLUSIONS

The vast majority of new UK route Physiotherapists remained on the HCPC register four years after their first registration with around 1 in 15 having left by then.

The greatest variation was observed in nationality, with UK nationality exhibiting higher retention, and in gender / sex, with females exhibiting higher retention.

The nationality effect appeared to be the main driver behind the variation in retention rates between locations of training course providers.

For further information see www.hcpc-uk.org/insights/